


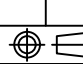
# MITSUBISHI 9900B 500kVA UPS & BYPASS CONFIGURATION

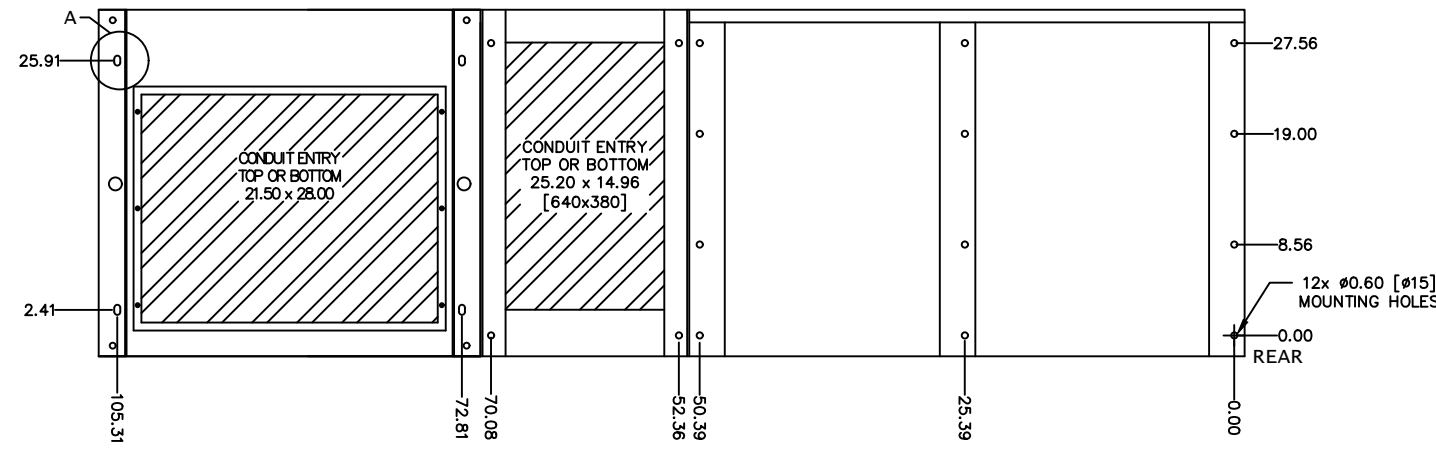
CUSTOMER -  
PROJECT NUMBER -  
PROJECT LOCATION -

### TABLE OF CONTENTS

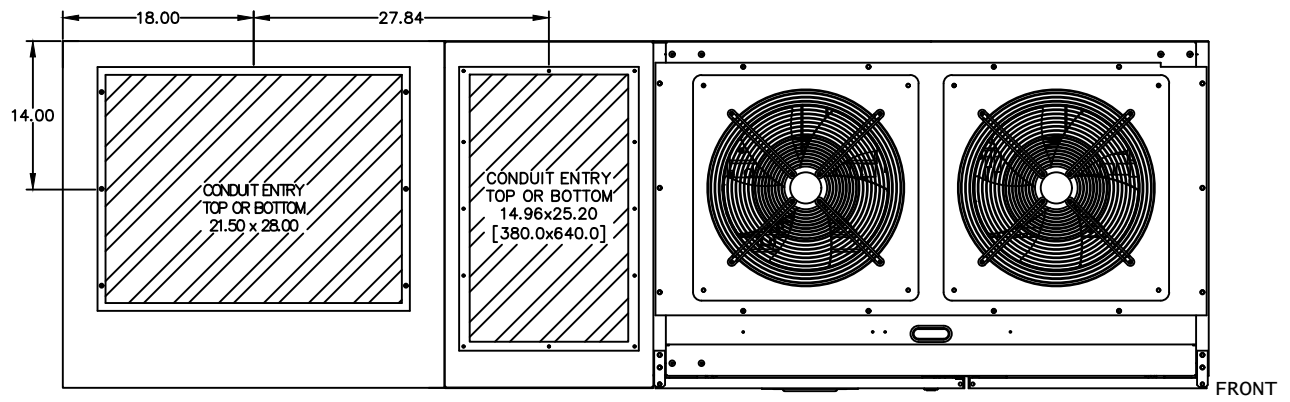
SHEET NO.	TITLE
01	COVER SHEET
02	500kVA UPS & BYPASS CONFIGURATION
03	500kVA UPS DETAIL
04	UPS ONE-LINE DIAGRAM
05	UPS ELECTRICAL SCHEMATIC
06	UPS CONTACT DIAGRAM
07	
08	
09	
10	
11	
12	
13	
14	
15	

REVISIONS
0 RELEASED FOR USE NRR 6/13/11
1 REVISED CONDUIT ENTRY RJM 7/13/12
2 REVISED DC GROUND SPS 12/10/13
3 REVISED MOUNTING HOLES RAL 5/7/14
4 CHANGED TEXT ON SHEET 6 OF 6 GDJ 2/20/15
5 CHANGED TEXT ON SHEET 2 & 5 OF 6 AKK 8/18/17

DIM. IN: INCHES	SCALE: NTS	DRAFTER: T.DIEBLE	DATE: 06/03/11	 <b>MITSUBISHI ELECTRIC POWER PRODUCTS, INC.</b> WARRENDALE, PA.
<small>PROPRIETARY THIS DOCUMENT IS PROPERTY OF MITSUBISHI ELECTRIC POWER PRODUCTS INC. AND CONTAINS PROPRIETARY AND CONFIDENTIAL INFORMATION WHICH MUST NOT BE DUPLICATED, USED OR DISCLOSED OTHER THAN AS EXPRESSLY AUTHORIZED BY MITSUBISHI ELECTRIC POWER PRODUCTS INC.</small>		CHECKED: N.RIEMER	DATE: 06/03/11	
REF. DWG. No.		ENGINEER: N.RIEMER	DATE: 06/03/11	
FILE LOCATION:		APPROVED:	DATE:	
			DWG No. <b>UD-100115</b>	TITLE: <b>9900B 500kVA UPS WITH INTEGRAL BYPASS</b> SHEET 1 OF 6 REV: <b>5</b>

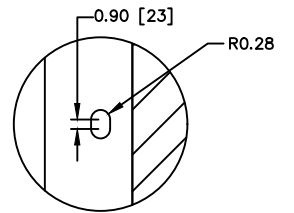


BOTTOM VIEW



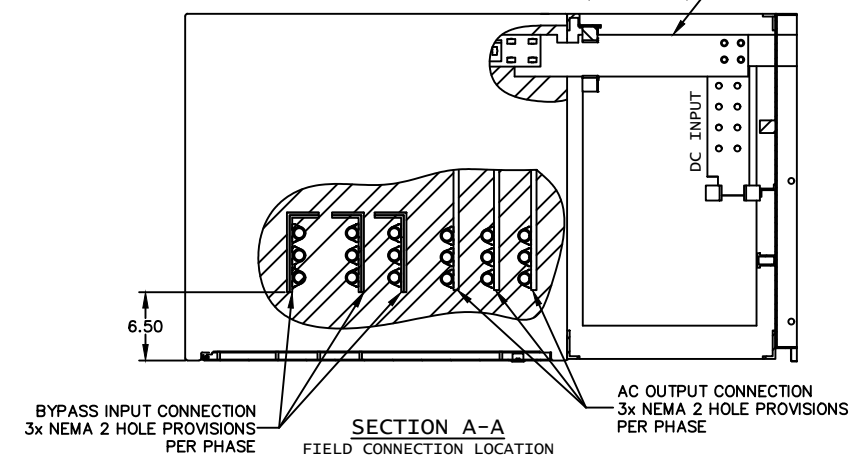
TOP VIEW

- NOTES**
1. FIELD CABLES AND TERMINATIONS BY OTHERS. (AC INPUT, DC INPUT, BYPASS INPUT AND AC OUTPUT.)
  2. PHASE ROTATION CLOCKWISE A, B, C.
  3. UPS INCLUDES ATTACHED SIDECAR
  4. BYPASS SHIPPED SEPARATELY
  5. CABINET MUST BE MAINTAINED UPRIGHT ±15° DURING HANDLING.
  6. APPROXIMATE WEIGHT WITH BYPASS: 4,975LBS

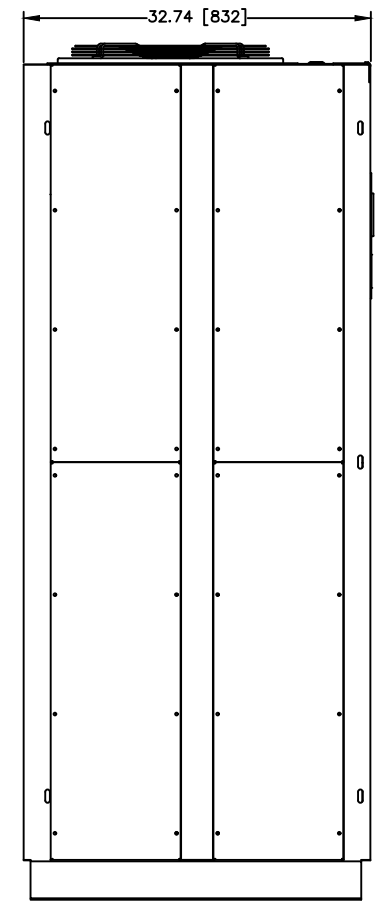


DETAIL A  
36" BYPASS ANCHORING (TYP 4)

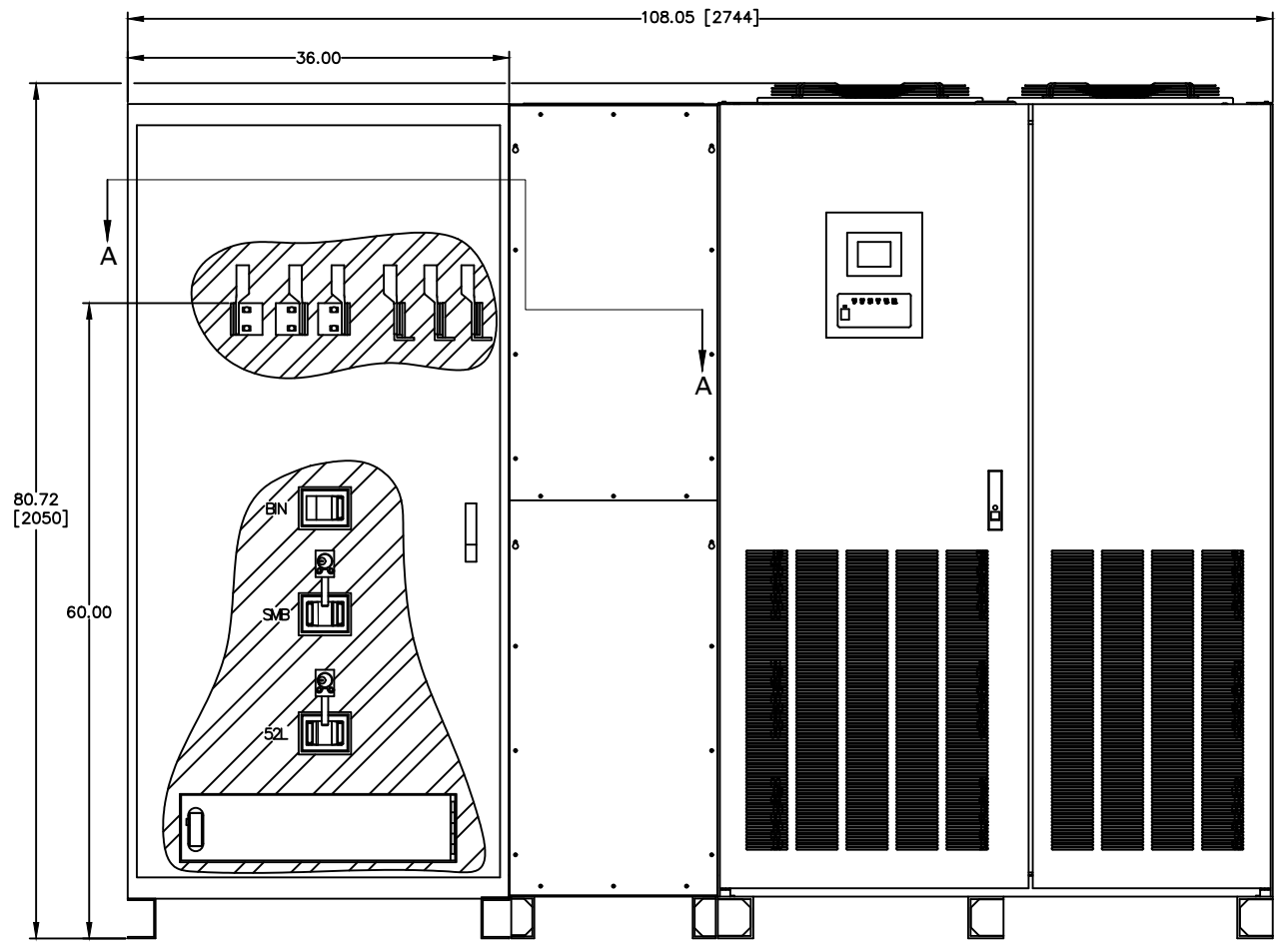
REMOVE AND DISCARD FACTORY BYPASS INPUT & AC OUTPUT BUSSES  
REPLACE WITH SUPPLIED LINK BUSSES (TYP A, B & C PHASES)  
AC INPUT AND DC BUS STAY ALONG THE UPS (AS SHIPPED)



SECTION A-A  
FIELD CONNECTION LOCATION



LEFT SIDE



FRONT VIEW

REVISIONS	DATE	BY	DESCRIPTION
0	RELEASED FOR USE	NRR 6/13/11	
1	REVISED CONDUIT ENTRY	RJM 7/13/12	
2	REVISED DC GROUND	SPS 12/10/13	
3	REVISED MOUNTING HOLES	RAL 5/7/14	
4	CHANGED TEXT ON SHEET 6 OF 6	GDJ 2/20/15	
5	CHANGED TEXT ON SHEET 2 & 5 OF 6	SAK 8/18/17	

DWG. No. UD-100115	SCALE: NTS	DRAFTER: T.DIEBLE	DATE: 06/03/11
FILE LOCATION:	PROPRIETARY THIS DOCUMENT IS PROPERTY OF MITSUBISHI ELECTRIC POWER PRODUCTS, INC. AND CONTAINS PROPRIETARY AND CONFIDENTIAL INFORMATION WHICH MUST NOT BE DUPLICATED, USED OR DISCLOSED OTHER THAN AS EXPRESSLY AUTHORIZED BY MITSUBISHI ELECTRIC POWER PRODUCTS, INC.	CHECKED: N.RIEMER	DATE: 06/03/11
		ENGINEER: N.RIEMER	DATE: 06/03/11
		APPROVED:	DATE:

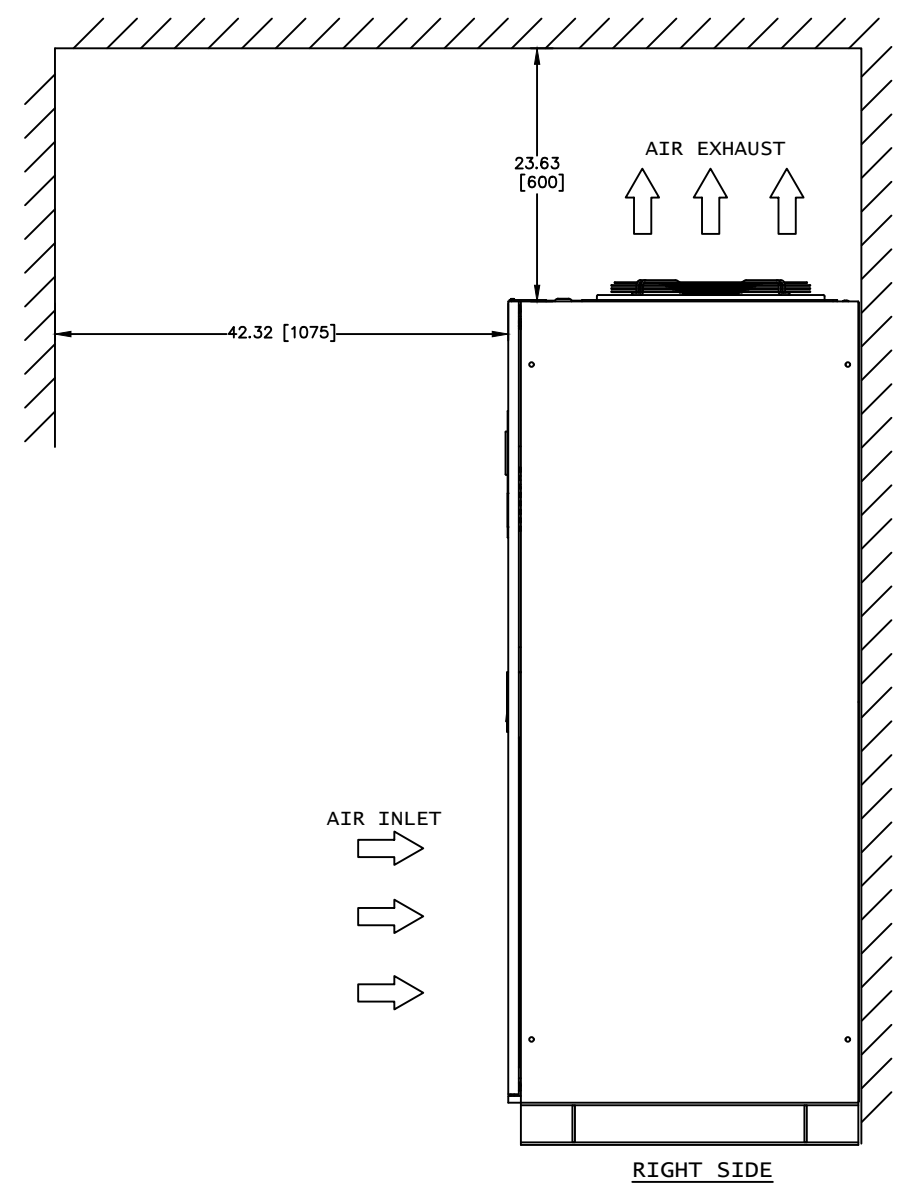
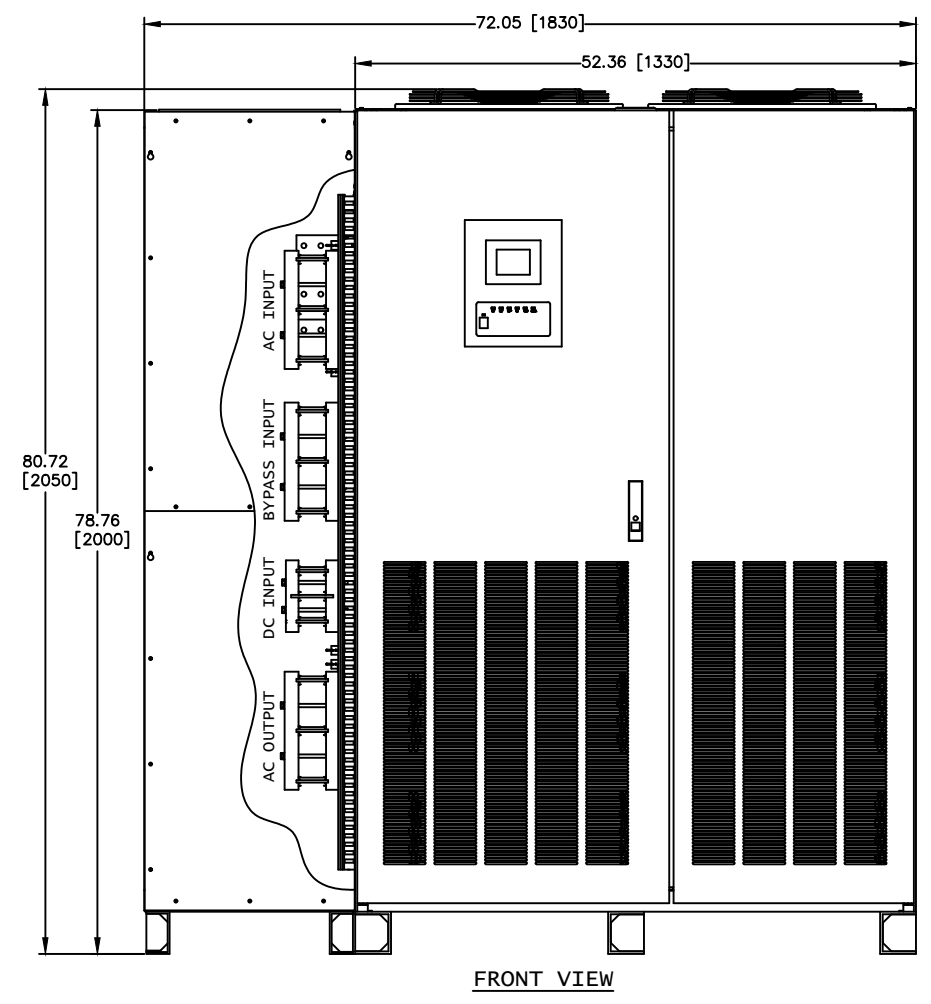
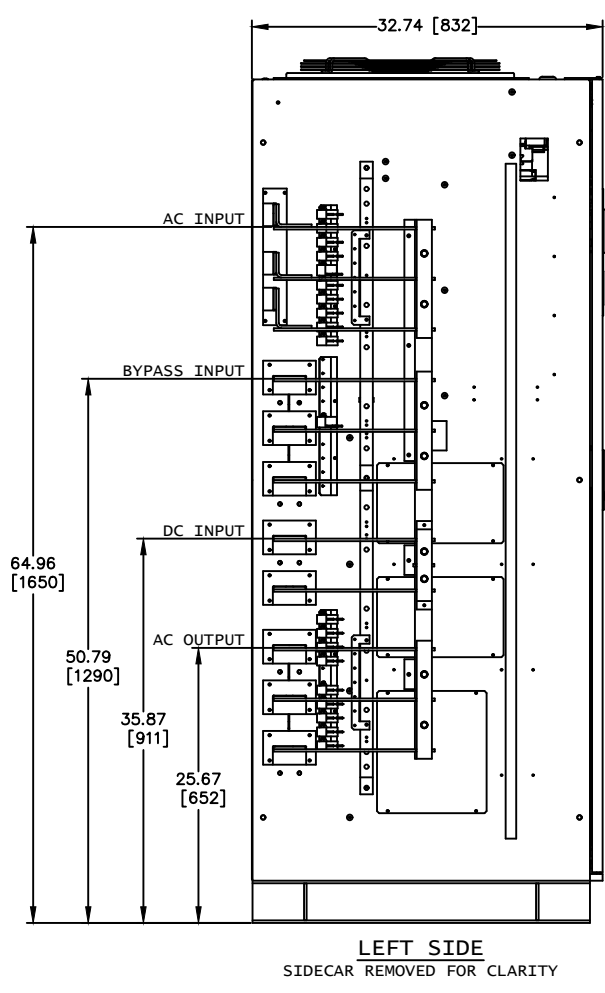
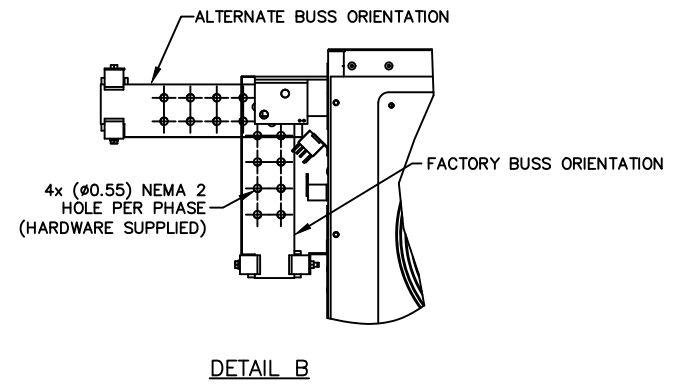
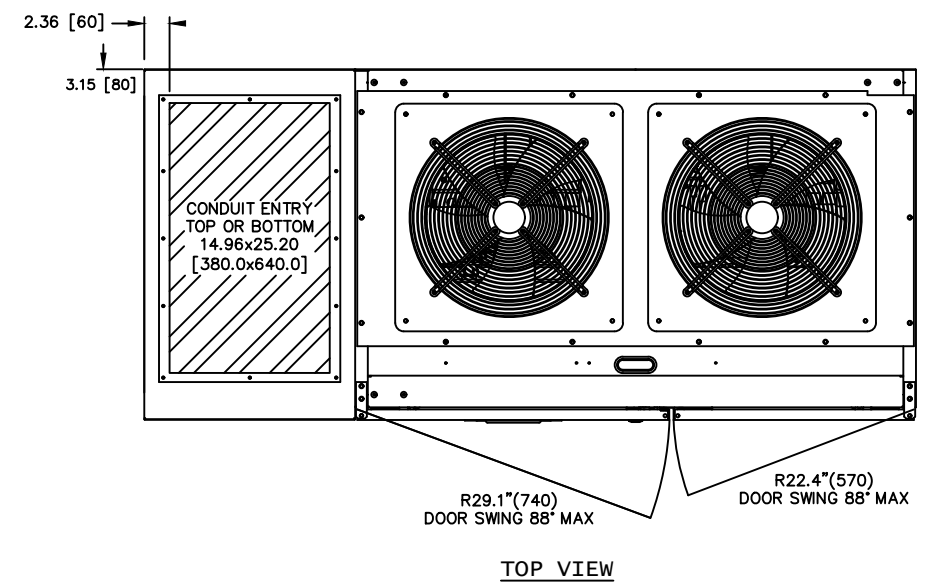
**MITSUBISHI ELECTRIC POWER PRODUCTS, INC.**  
WARRENDALE, PA.

TITLE: 9900B 500kVA UPS WITH INTEGRAL BYPASS

DWG No. UD-100115 SHEET 3 OF 6 REV: 5

NOTES

1. FIELD CABLES AND TERMINATIONS BY OTHERS. (AC INPUT, DC INPUT, BYPASS INPUT AND AC OUTPUT.)
2. ROTATION CLOCKWISE A, B, C.
3. UPS INCLUDES ATTACHED SIDECAR
4. CABINET SHOULD BE MAINTAINED UPRIGHT WITHIN ±15° DURING HANDLING.
5. APPROXIMATE WEIGHT: 3,300LBS (1,500kg)

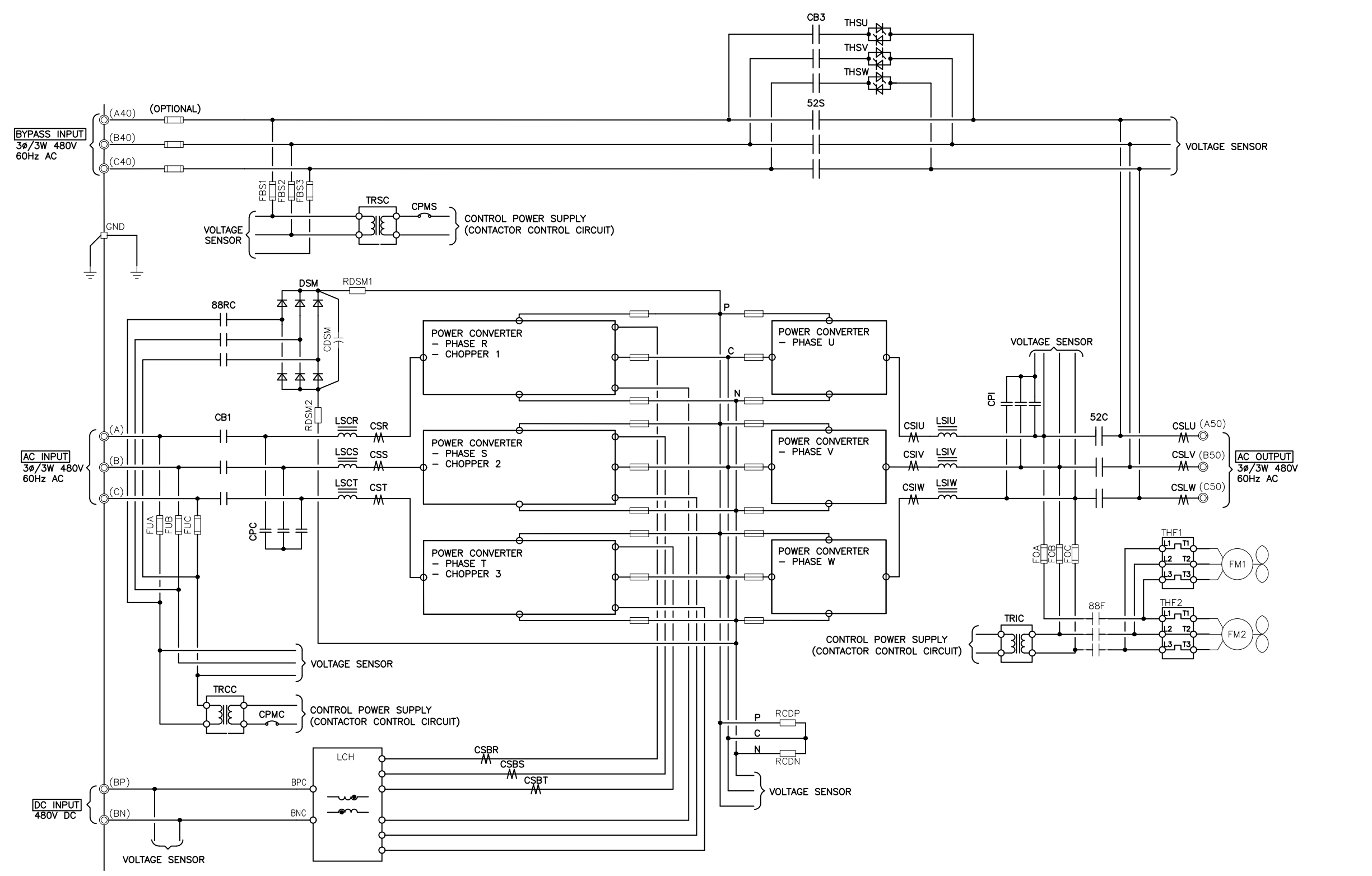


REVISIONS	DATE	BY	DESCRIPTION
0	RELEASED FOR USE	NRR	6/13/11
1	REVISED CONDUIT ENTRY	RJM	7/13/12
2	REVISED DC GROUND	SPS	12/10/13
3	REVISED MOUNTING HOLES	RAL	5/7/14
4	CHANGED TEXT ON SHEET 6 OF 6	GDJ	2/20/15
5	CHANGED TEXT ON SHEET 2 & 5 OF 6	AJK	8/18/17

DWG. No. UD-100115	SCALE: NTS	DRAFTER: T.DIEBLE	DATE: 06/03/11
FILE LOCATION:	PROPRIETARY THIS DOCUMENT IS PROPERTY OF MITSUBISHI ELECTRIC POWER PRODUCTS INC. AND CONTAINS PROPRIETARY AND CONFIDENTIAL INFORMATION WHICH MUST NOT BE DUPLICATED, USED OR DISCLOSED OTHER THAN AS EXPRESSLY AUTHORIZED BY MITSUBISHI ELECTRIC POWER PRODUCTS INC.	CHECKED: N.RIEMER	DATE: 06/03/11
		ENGINEER: N.RIEMER	DATE: 06/03/11
		APPROVED:	DATE:

TITLE: 9900B 500kVA UPS WITH INTEGRAL BYPASS  
SHEET 2 OF 6  
REV: 5

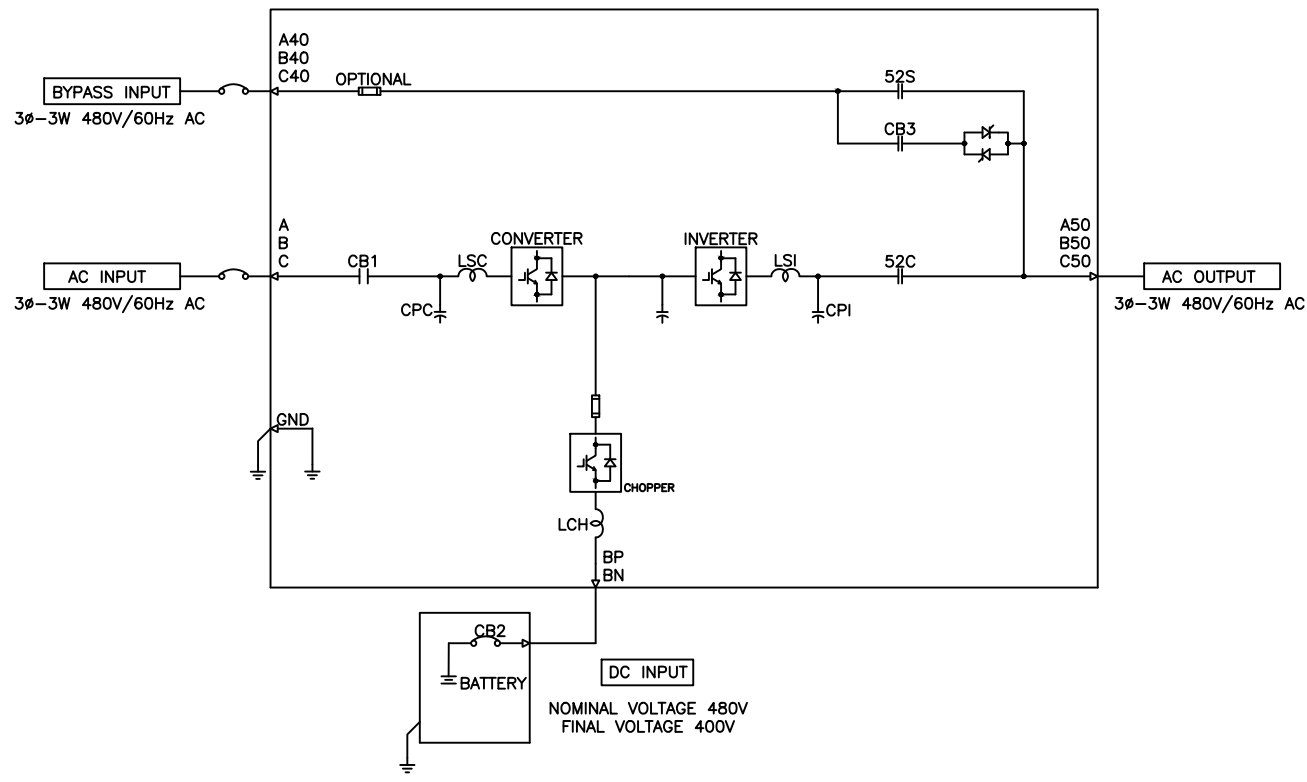




REVISIONS
0 RELEASED FOR USE NRR 6/13/11
1 REVISED CONDUIT ENTRY RJM 7/13/12
2 REVISED DC GROUND SPS 12/10/13
3 REVISED MOUNTING HOLES RAL 5/7/14
4 CHANGED TEXT ON SHEET 6 OF 6 GDJ 2/20/15
5 CHANGED TEXT ON SHEET 2 & 5 OF 6 AK 8/18/17

PROPRIETARY THIS DOCUMENT IS PROPERTY OF MITSUBISHI ELECTRIC POWER PRODUCTS, INC. AND CONTAINS PROPRIETARY AND CONFIDENTIAL INFORMATION WHICH MUST NOT BE DUPLICATED, USED OR DISCLOSED OTHER THAN AS EXPRESSLY AUTHORIZED BY MITSUBISHI ELECTRIC POWER PRODUCTS, INC.	DRAFTER: T.DIEBLE DATE: 06/03/11 CHECKED: N.RIEMER DATE: 06/03/11 ENGINEER: N.RIEMER DATE: 06/03/11 APPROVED:	DATE: 06/03/11 DATE: 06/03/11 DATE: 06/03/11 DATE:
REF. DWG. No.	FILE LOCATION:	

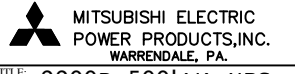
DIM. IN: INCHES	SCALE: NTS	DRAFTER: T.DIEBLE	DATE: 06/03/11	<b>MITSUBISHI ELECTRIC POWER PRODUCTS, INC.</b> WARRENDALE, PA. <b>TITLE: 9900B 500kVA UPS WITH INTEGRAL BYPASS</b>
PROPRIETARY THIS DOCUMENT IS PROPERTY OF MITSUBISHI ELECTRIC POWER PRODUCTS, INC. AND CONTAINS PROPRIETARY AND CONFIDENTIAL INFORMATION WHICH MUST NOT BE DUPLICATED, USED OR DISCLOSED OTHER THAN AS EXPRESSLY AUTHORIZED BY MITSUBISHI ELECTRIC POWER PRODUCTS, INC.		CHECKED: N.RIEMER DATE: 06/03/11 ENGINEER: N.RIEMER DATE: 06/03/11 APPROVED:	DATE: 06/03/11 DATE: 06/03/11 DATE:	
REF. DWG. No.		FILE LOCATION:		
DWG. No. UD-100115		SHEET 4 OF 6	REV: 5	

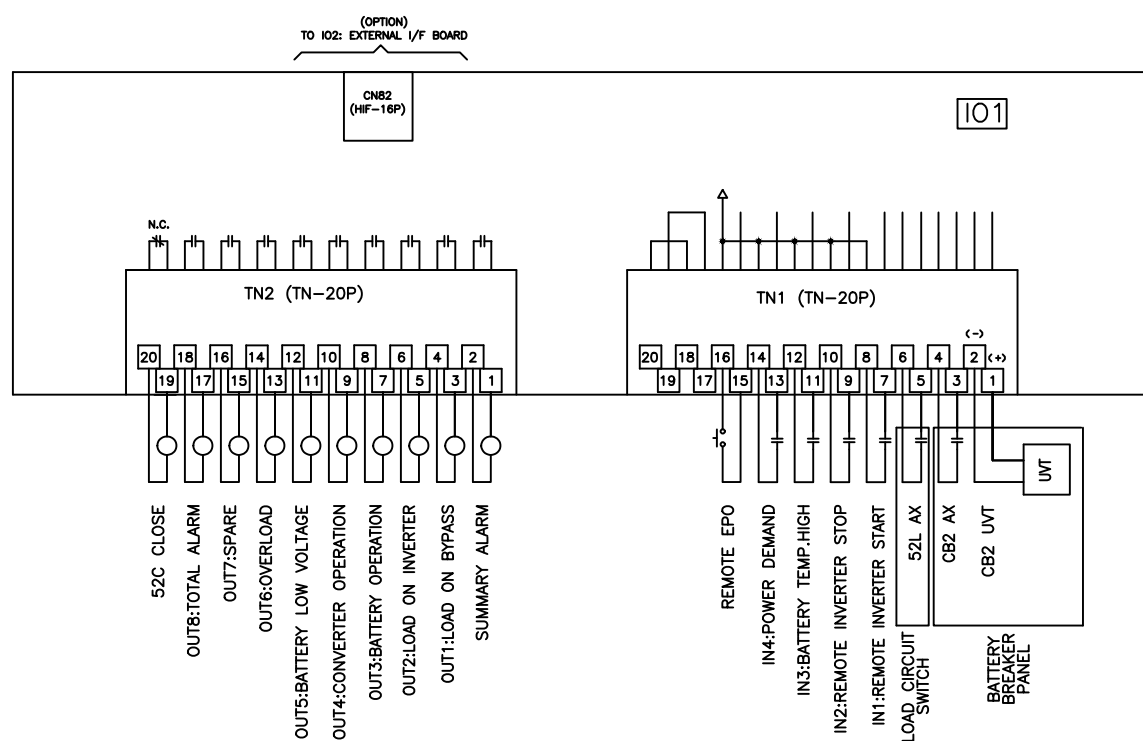


500kVA 500kW UPS MODULE

REVISIONS
0 RELEASED FOR USE NRR 6/13/11
1 REVISED CONDUIT ENTRY RJM 7/13/12
2 REVISED DC GROUND SPS 12/10/13
3 REVISED MOUNTING HOLES RAL 5/7/14
4 CHANGED TEXT ON SHEET 6 OF 6 GDJ 2/20/15
5 CHANGED TEXT ON SHEET 2 & 5 OF 6 AJK 8/18/17

DIM. IN: INCHES	SCALE: NTS	DRAFTER: T.DIEBLE	DATE: 06/03/11
PROPRIETARY THIS DOCUMENT IS PROPERTY OF MITSUBISHI ELECTRIC POWER PRODUCTS, INC. AND CONTAINS PROPRIETARY AND CONFIDENTIAL INFORMATION WHICH MUST NOT BE DUPLICATED, USED OR DISCLOSED OTHER THAN AS EXPRESSLY AUTHORIZED BY MITSUBISHI ELECTRIC POWER PRODUCTS, INC.		CHECKED: N.RIEMER	DATE: 06/03/11
REF. DWG. No.	APPROVED:	ENGINEER: N.RIEMER	DATE: 06/03/11
FILE LOCATION:			TITLE: 9900B 500kVA UPS WITH INTEGRAL BYPASS DWG No. UD-100115 SHEET 5 OF 6 REV: 5





UPS CONTACT DIAGRAM

REVISIONS
0 RELEASED FOR USE NRR 6/13/11
1 REVISED CONDUIT ENTRY RJM 7/13/12
2 REVISED DC GROUND SPS 12/10/13
3 REVISED MOUNTING HOLES RAL 5/7/14
4 CHANGED TEXT ON SHEET 6 OF 6 GDJ 2/20/15
5 CHANGED TEXT ON SHEET 2 & 5 OF 6 AK 8/18/17

DIM. IN: INCHES	SCALE: NTS	DRAFTER: T.DIEBLE	DATE: 06/03/11
<small>PROPRIETARY THIS DOCUMENT IS PROPERTY OF MITSUBISHI ELECTRIC POWER PRODUCTS INC. AND CONTAINS PROPRIETARY AND CONFIDENTIAL INFORMATION WHICH MUST NOT BE DUPLICATED, USED OR DISCLOSED OTHER THAN AS EXPRESSLY AUTHORIZED BY MITSUBISHI ELECTRIC POWER PRODUCTS INC.</small>		CHECKED: N.RIEMER	DATE: 06/03/11
		ENGINEER: N.RIEMER	DATE: 06/03/11
REF. DWG. No.	APPROVED:	TITLE: 9900B 500kVA UPS WITH INTEGRAL BYPASS	
FILE LOCATION:	DWG No. UD-100115		REV: 5

