


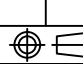
# MITSUBISHI 9900B 750kVA UPS & INTEGRAL BYPASS

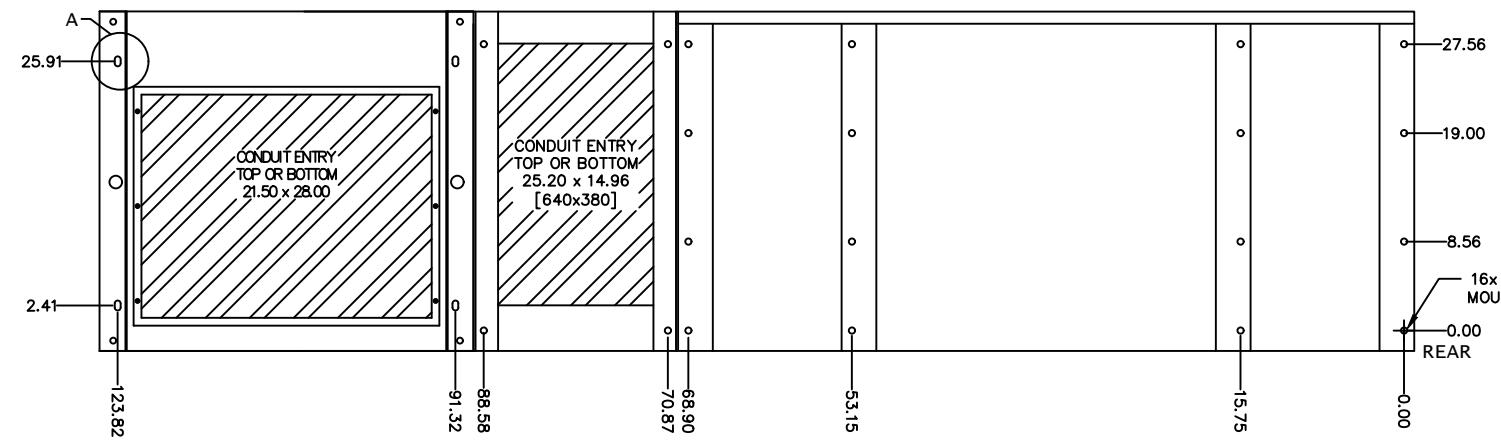
CUSTOMER -  
PROJECT NUMBER -  
PROJECT LOCATION -

### TABLE OF CONTENTS

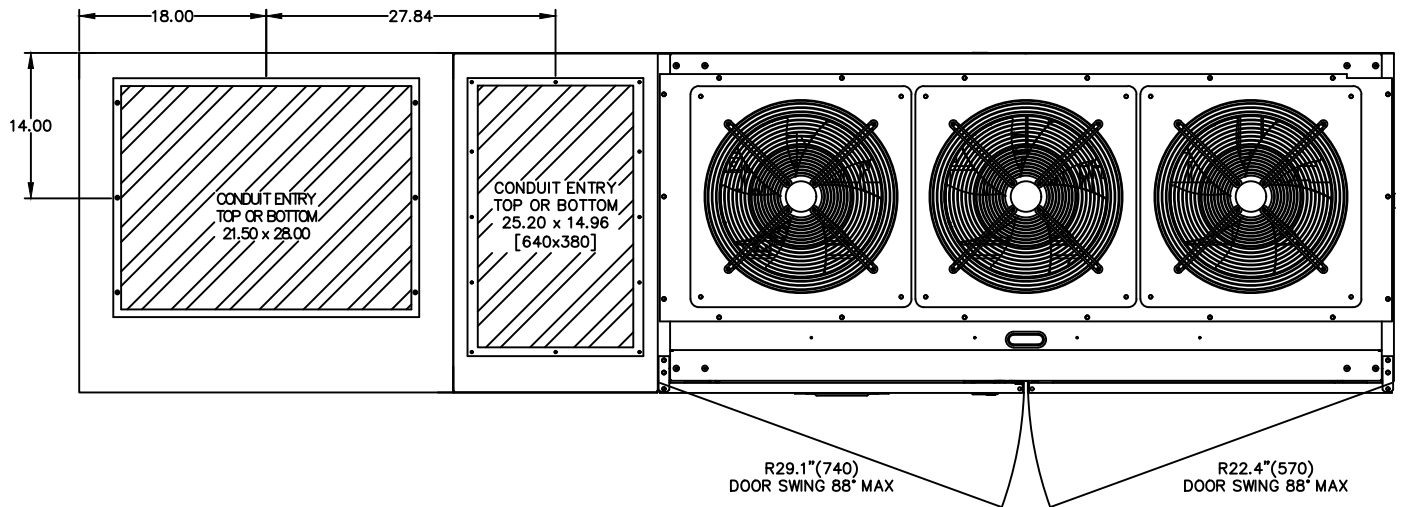
SHEET NO.	TITLE
01	COVER SHEET
02	750kVA UPS & BYPASS CONFIGURATION
03	750kVA UPS DETAIL
04	UPS ONE-LINE DIAGRAM
05	UPS ELECTRICAL SCHEMATIC
06	UPS CONTACT DIAGRAM
07	
08	
09	
10	
11	
12	
13	
14	
15	

REVISIONS
0 RELEASED FOR USE NRR 6/13/11
1 REVISED CONDUIT ENTRY RJM 7/13/12
2 REVISED DC GROUND SPS 12/10/13
3 REVISED MOUNTING HOLES RAL 5/7/14
4 CHANGED TEXT ON SHEET 6 OF 6 GDJ 2/20/15
5 CHANGED TEXT ON SHEET 3 & 5 OF 6 AJK 8/18/17

DIM. IN: INCHES	SCALE: NTS	DRAFTER: T.DIEBLE	DATE: 06/03/11	 <b>MITSUBISHI ELECTRIC POWER PRODUCTS, INC.</b> WARRENDALE, PA.
PROPRIETARY THIS DOCUMENT IS PROPERTY OF MITSUBISHI ELECTRIC POWER PRODUCTS INC. AND CONTAINS PROPRIETARY AND CONFIDENTIAL INFORMATION WHICH MUST NOT BE DUPLICATED, USED OR DISCLOSED OTHER THAN AS EXPRESSLY AUTHORIZED BY MITSUBISHI ELECTRIC POWER PRODUCTS INC.		CHECKED: N.RIEMER	DATE: 06/03/11	
		ENGINEER: N.RIEMER	DATE: 06/03/11	
REF. DWG. No.	APPROVED:	DATE:	TITLE: 9900B 750kVA UPS WITH INTEGRAL BYPASS	
FILE LOCATION:			DWG No. UD-100117 SHEET 1 OF 6 REV: 5	

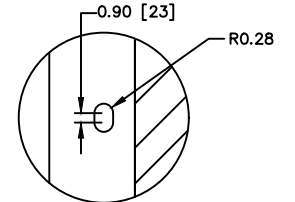


BOTTOM VIEW



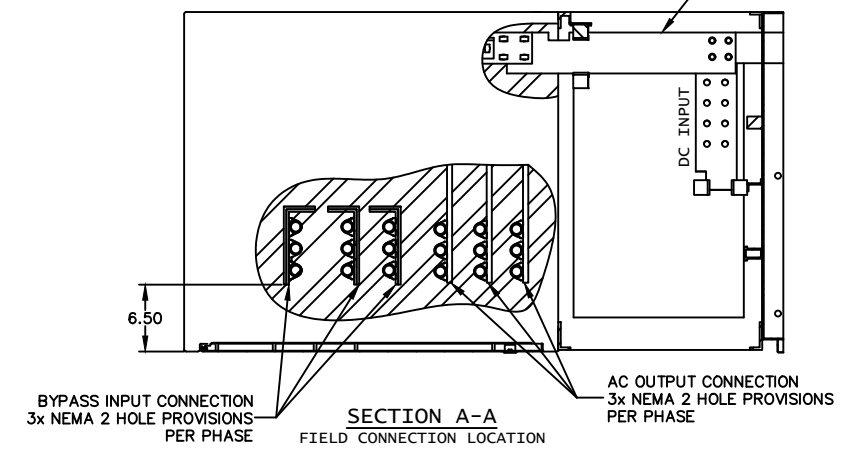
TOP VIEW

- NOTES**
1. FIELD CABLES AND TERMINATIONS BY OTHERS. (AC INPUT, DC INPUT, BYPASS INPUT AND AC OUTPUT.)
  2. PHASE ROTATION CLOCKWISE A, B, C.
  3. UPS INCLUDES ATTACHED SIDECAR
  4. BYPASS SHIPPED SEPARATELY
  5. CABINET SHOULD BE MAINTAINED UPRIGHT WITHIN ±15°.
  6. APPROXIMATE WEIGHT: 5,775LBS

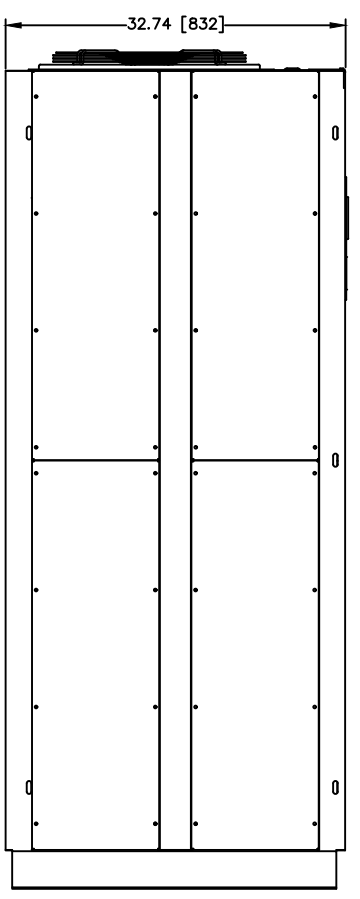


DETAIL A  
36" BYPASS ANCHORING (TYP 4)

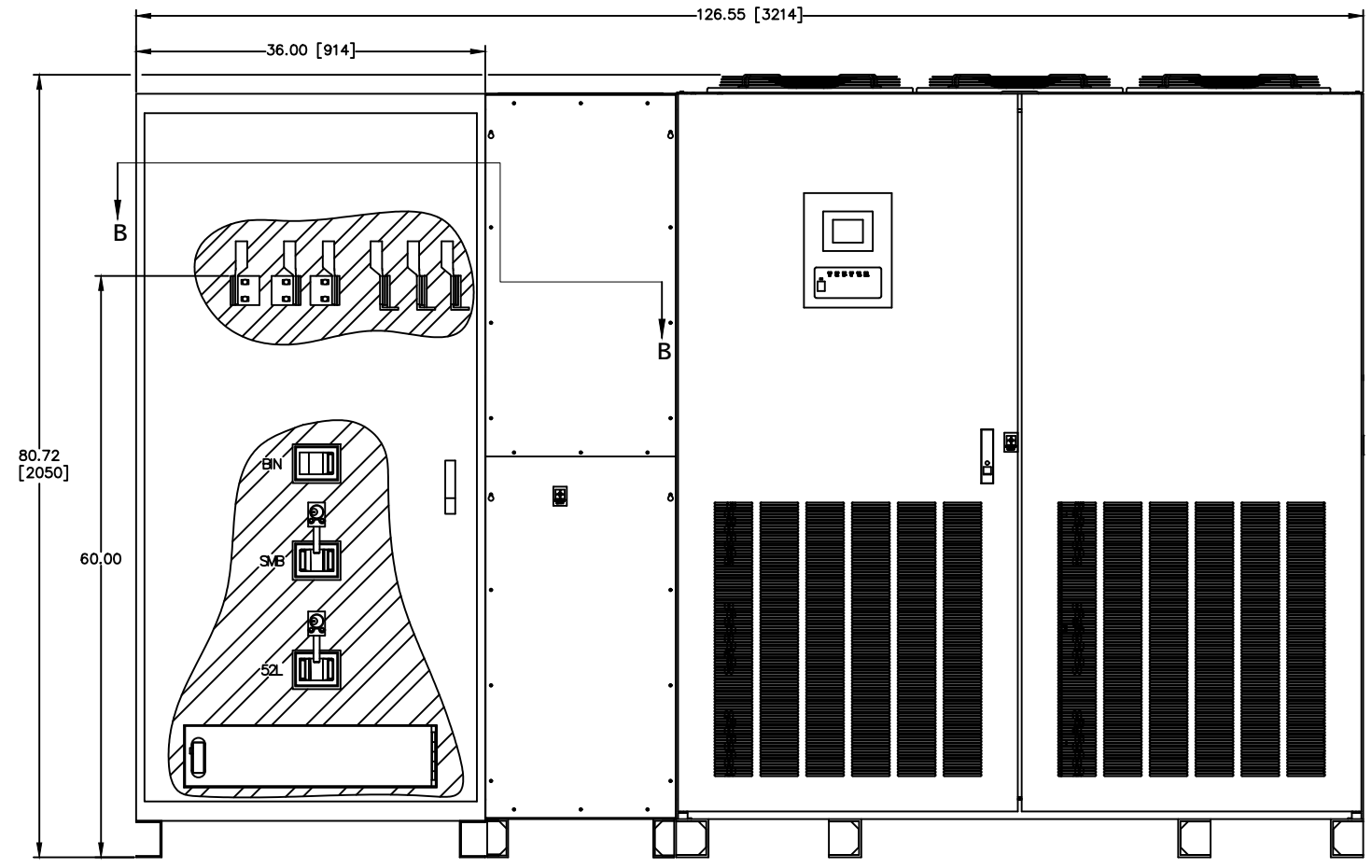
REMOVE AND DISCARD FACTORY BYPASS INPUT & AC OUTPUT BUSS  
REPLACE WITH SUPPLIED LINK BUSS (TYP A,B&C PHASES)  
AC INPUT AND DC BUS STAYS ALONG UPS (AS SHIPPED)



SECTION A-A  
FIELD CONNECTION LOCATION



LEFT SIDE



FRONT VIEW

REVISIONS	DATE	BY	DESCRIPTION
0	RELEASED FOR USE	NRR	6/13/11
1	REVISED CONDUIT ENTRY	RJM	7/13/12
2	REVISED DC GROUND	SPS	12/10/13
3	REVISED MOUNTING HOLES	RAL	5/7/14
4	CHANGED TEXT ON SHEET 6 OF 6	GDJ	2/20/15
5	CHANGED TEXT ON SHEET 3 & 5 OF 6	AKK	8/18/17

DWG. No. UD-100117	SCALE: NTS	DRAFTER: T.DIEBLE	DATE: 06/03/11
FILE LOCATION:	PROPRIETARY THIS DOCUMENT IS PROPERTY OF MITSUBISHI ELECTRIC POWER PRODUCTS INC. AND CONTAINS PROPRIETARY AND CONFIDENTIAL INFORMATION WHICH MUST NOT BE DUPLICATED, USED OR DISCLOSED OTHER THAN AS EXPRESSLY AUTHORIZED BY MITSUBISHI ELECTRIC POWER PRODUCTS INC.	CHECKED: N.RIEMER	DATE: 06/03/11
		ENGINEER: N.RIEMER	DATE: 06/03/11
		APPROVED:	DATE:

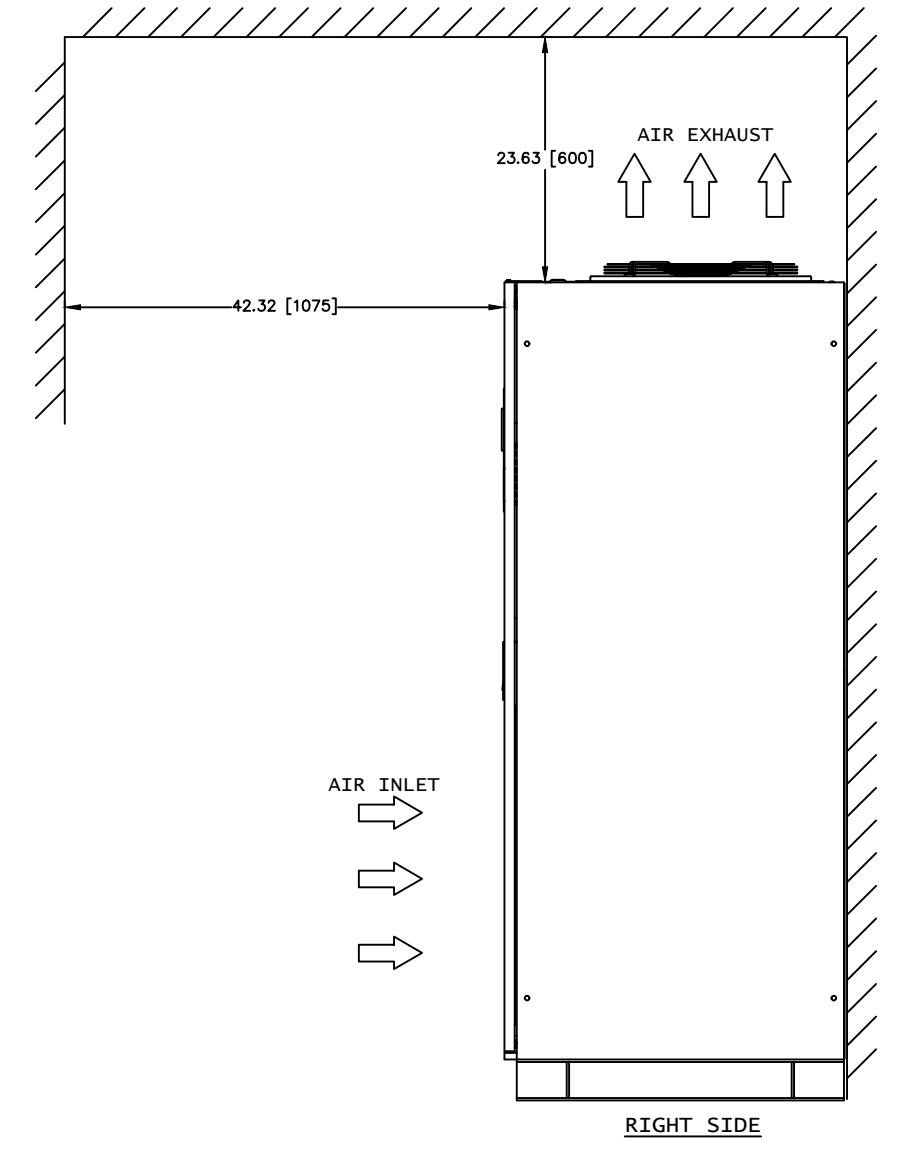
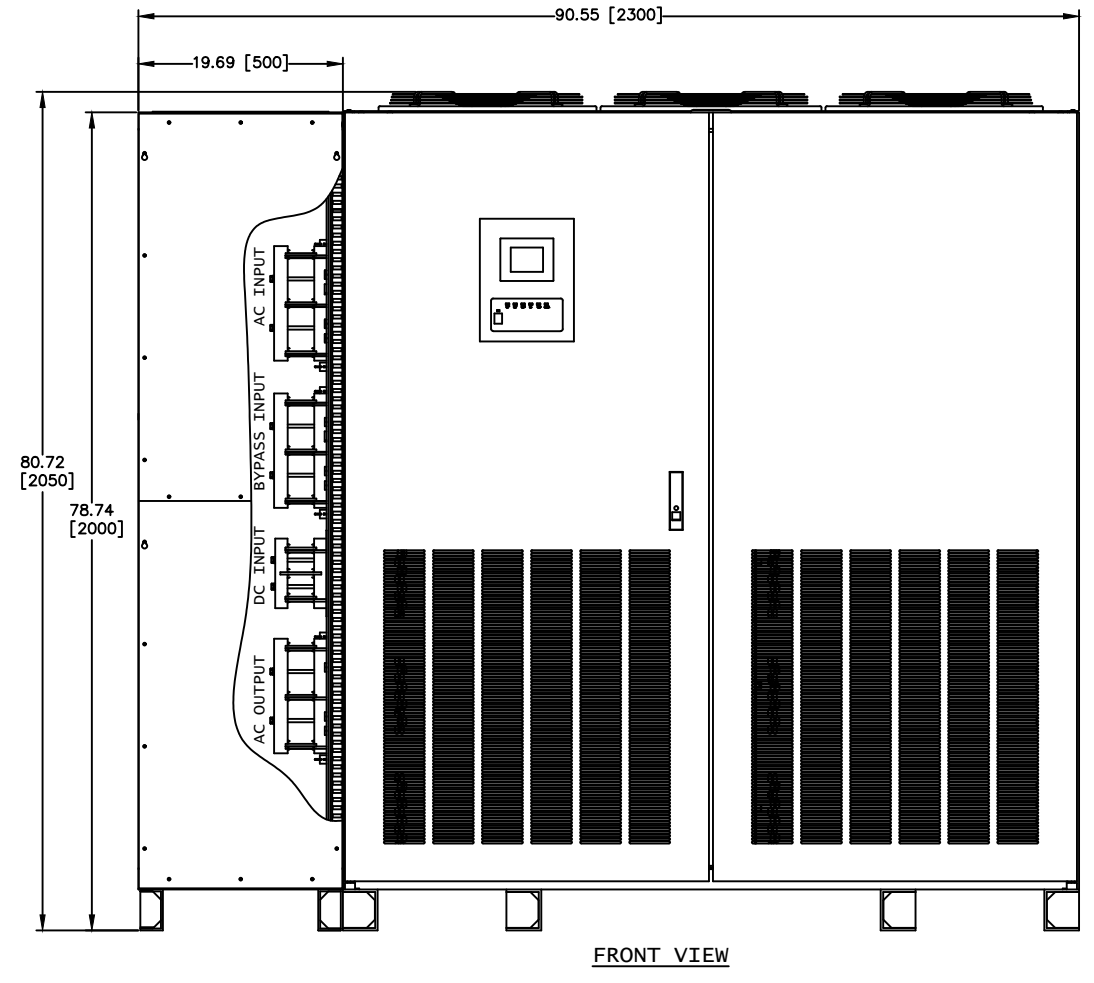
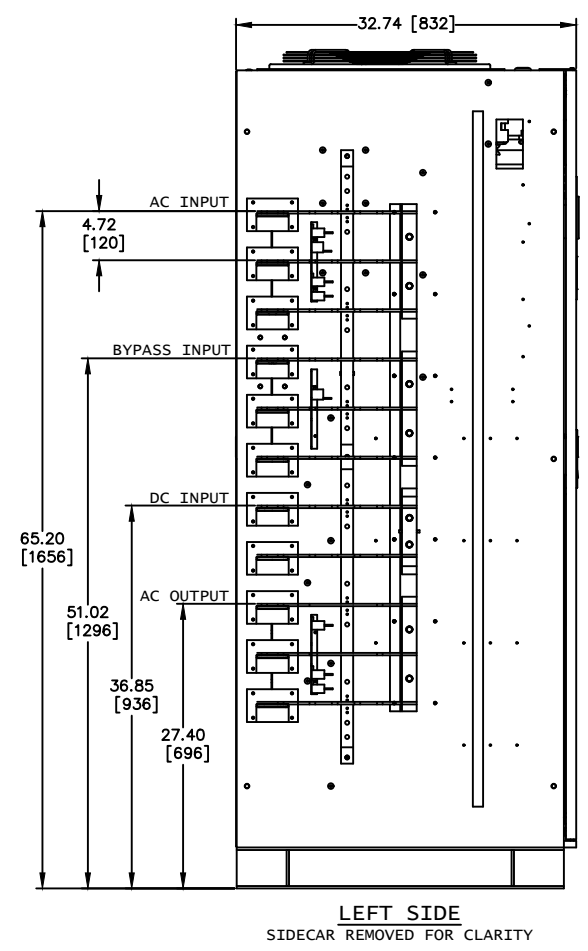
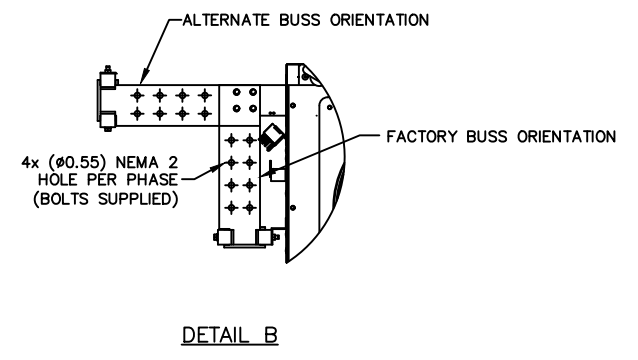
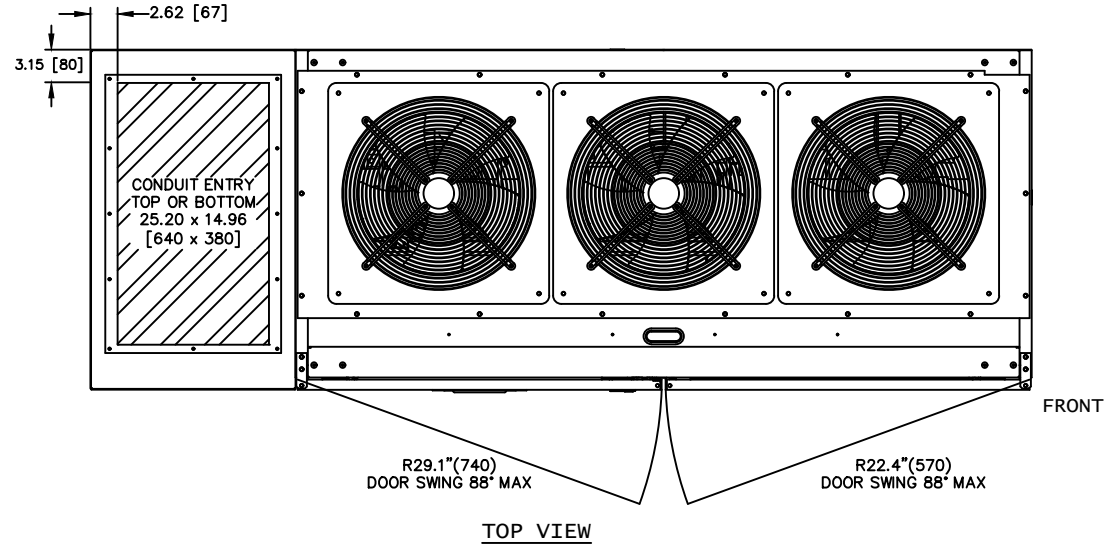
TITLE: 9900B 750kVA UPS WITH INTEGRAL BYPASS

REV: 5



WARRENDALE, PA.  
9900B 750kVA UPS WITH INTEGRAL BYPASS

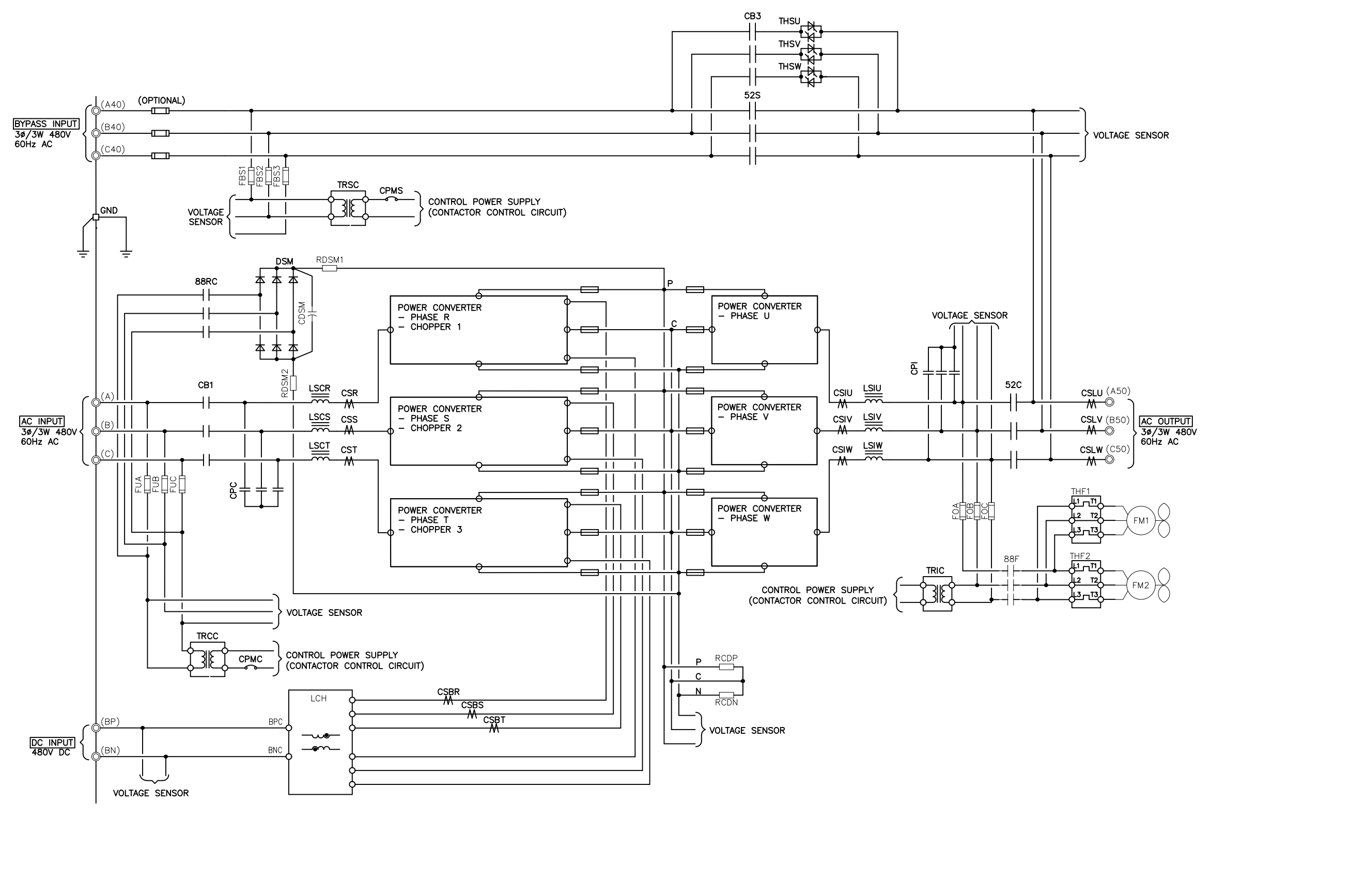
- NOTES**
1. FIELD CABLES AND TERMINATIONS BY OTHERS.  
(AC INPUT, DC INPUT, BYPASS INPUT AND AC OUTPUT.)
  2. PHASE ROTATION CLOCKWISE A, B, C.
  3. UPS INCLUDES ATTACHED SIDECAR.
  4. CABINET SHOULD BE MAINTAINED UPRIGHT WITHIN ±15°.
  5. APPROXIMATE WEIGHT: 4,255LBS



REVISIONS	DATE	BY	DESCRIPTION
0	RELEASED FOR USE	NRR 6/13/11	
1	REVISED CONDUIT ENTRY	RJM 7/13/12	
2	REVISED DC GROUND	SPS 12/10/13	
3	REVISED MOUNTING HOLES	RAL 5/7/14	
4	CHANGED TEXT ON SHEET 6 OF 6	GDJ 2/20/15	
5	CHANGED TEXT ON SHEET 3 & 5 OF 6	AJK 8/18/17	

DWG. No. UD-100117	SCALE: NTS	DRAFTER: T.DIEBLE	DATE: 06/03/11
FILE LOCATION:	PROPRIETARY THIS DOCUMENT IS PROPERTY OF MITSUBISHI ELECTRIC POWER PRODUCTS INC. AND CONTAINS PROPRIETARY AND CONFIDENTIAL INFORMATION WHICH MUST NOT BE DUPLICATED, USED OR DISCLOSED OTHER THAN AS EXPRESSLY AUTHORIZED BY MITSUBISHI ELECTRIC POWER PRODUCTS INC.	CHECKED: N.RIEMER	DATE: 06/03/11
		ENGINEER: N.RIEMER	DATE: 06/03/11
		APPROVED:	DATE:

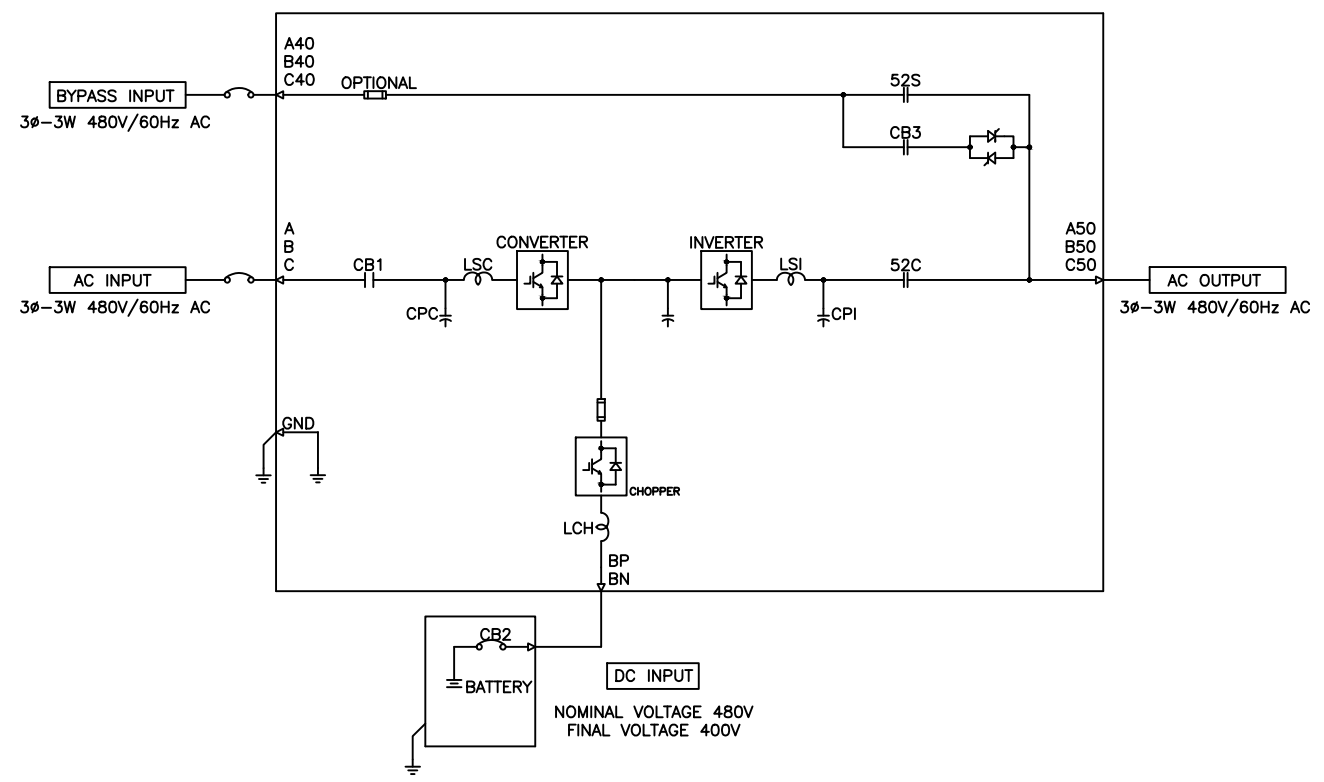
**MITSUBISHI ELECTRIC POWER PRODUCTS, INC.**  
WARRENDALE, PA.  
TITLE: 9900B 750kVA UPS WITH INTEGRAL BYPASS  
SHEET 3 OF 6  
REV: 5



REVISIONS
0 RELEASED FOR USE NRR 6/13/11
1 REVISED CONDUIT ENTRY RJM 7/13/12
2 REVISED DC GROUND SPS 12/10/13
3 REVISED MOUNTING HOLES RAL 5/7/14
4 CHANGED TEXT ON SHEET 6 OF 6 GDJ 2/20/15
5 CHANGED TEXT ON SHEET 3 & 5 OF 6 AKR 8/18/17

DIM. IN: INCHES	SCALE: NTS	DRAFTER: T.DIEBLE	DATE: 06/03/11
PROPRIETARY THIS DOCUMENT IS PROPERTY OF MITSUBISHI ELECTRIC POWER PRODUCTS, INC. AND CONTAINS PROPRIETARY AND CONFIDENTIAL INFORMATION WHICH MUST NOT BE DUPLICATED, USED OR DISCLOSED OTHER THAN AS EXPRESSLY AUTHORIZED BY MITSUBISHI ELECTRIC POWER PRODUCTS, INC.		CHECKED: N.RIEMER	DATE: 06/03/11
REF. DWG. No.	APPROVED: N.RIEMER	ENGINEER: N.RIEMER	DATE: 06/03/11
FILE LOCATION:			

MITSUBISHI ELECTRIC POWER PRODUCTS, INC. WARRENDALE, PA.	TITLE: 9900B 750kVA UPS WITH INTEGRAL BYPASS
	DWG. No. UD-100117 SHEET 4 OF 6 REV: 5

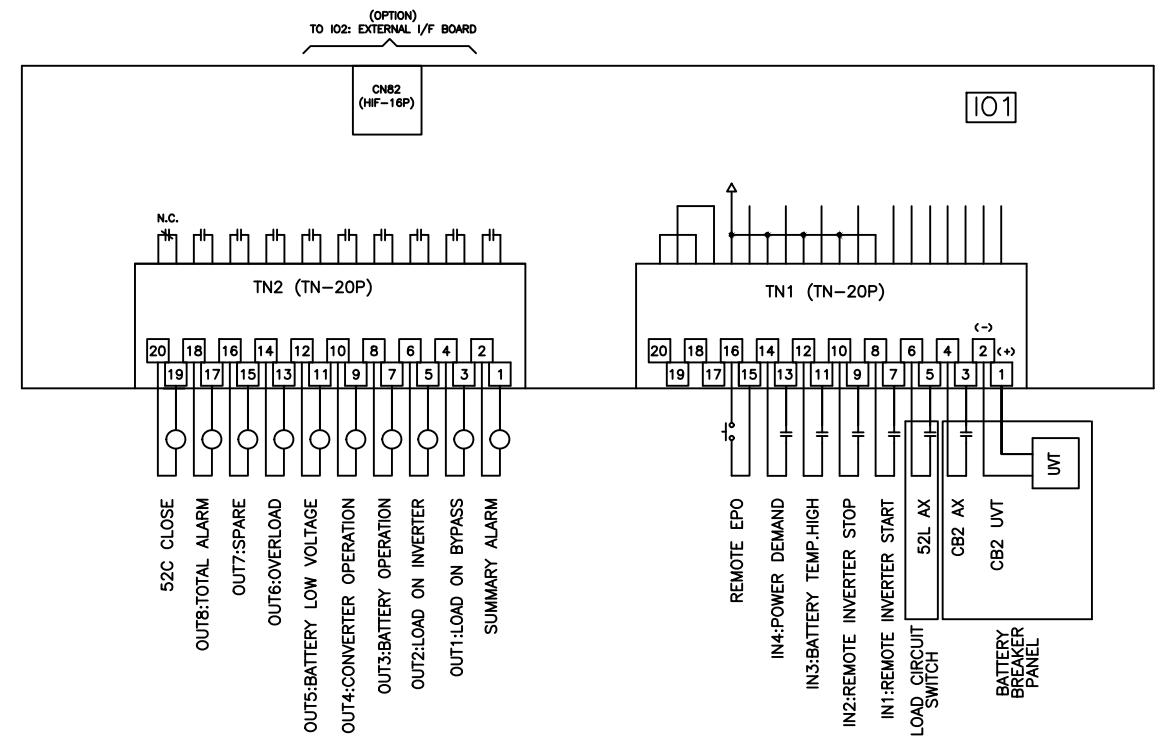


750kVA 750kW UPS MODULE

REVISIONS
0 RELEASED FOR USE NRR 6/13/11
1 REVISED CONDUIT ENTRY RJM 7/13/12
2 REVISED DC GROUND SPS 12/10/13
3 REVISED MOUNTING HOLES RAL 5/7/14
4 CHANGED TEXT ON SHEET 6 OF 6 GDJ 2/20/15
5 CHANGED TEXT ON SHEET 3 & 5 OF 6 AJK 8/18/17

DIM. IN: INCHES	SCALE: NTS	DRAFTER: T.DIEBLE	DATE: 06/03/11
<small>PROPRIETARY THIS DOCUMENT IS PROPERTY OF MITSUBISHI ELECTRIC POWER PRODUCTS INC. AND CONTAINS PROPRIETARY AND CONFIDENTIAL INFORMATION WHICH MUST NOT BE DUPLICATED, USED OR DISCLOSED OTHER THAN AS EXPRESSLY AUTHORIZED BY MITSUBISHI ELECTRIC POWER PRODUCTS INC.</small>		CHECKED: N.RIEMER	DATE: 06/03/11
		ENGINEER: N.RIEMER	DATE: 06/03/11
REF. DWG. No.	APPROVED:	DATE:	
FILE LOCATION:			

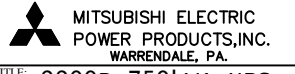
**MITSUBISHI ELECTRIC POWER PRODUCTS, INC.**  
 WARRENDALE, PA.  
**TITLE: 9900B 750kVA UPS WITH INTEGRAL BYPASS**  
 DWG No. UD-100117 SHEET 5 OF 6 REV: 5



UPS CONTACT DIAGRAM

REVISIONS
0 RELEASED FOR USE NRR 6/13/11
1 REVISED CONDUIT ENTRY RJM 7/13/12
2 REVISED DC GROUND SPS 12/10/13
3 REVISED MOUNTING HOLES RAL 5/7/14
4 CHANGED TEXT ON SHEET 6 OF 6 GDJ 2/20/15
5 CHANGED TEXT ON SHEET 3 & 5 OF 6 AJK 8/18/17

DIM. IN: INCHES	SCALE: NTS	DRAFTER: T.DIEBLE	DATE: 06/03/11
<small>PROPRIETARY THIS DOCUMENT IS PROPERTY OF MITSUBISHI ELECTRIC POWER PRODUCTS INC. AND CONTAINS PROPRIETARY AND CONFIDENTIAL INFORMATION WHICH MUST NOT BE DUPLICATED, USED OR DISCLOSED OTHER THAN AS EXPRESSLY AUTHORIZED BY MITSUBISHI ELECTRIC POWER PRODUCTS INC.</small>		CHECKED: N.RIEMER	DATE: 06/03/11
		ENGINEER: N.RIEMER	DATE: 06/03/11
		APPROVED:	DATE:
REF. DWG. No.			
FILE LOCATION:			



TITLE: 9900B 750kVA UPS WITH INTEGRAL BYPASS