

図番 3DAA4391

記録

M-L-2

MITSUBISHI 9900AEGIS SERIES UPS

SCHEMATIC DIAGRAM LIST

PROJECT 100kVA(480V) UL LISTED UPS

TYPE UP9933A-E104DU-4

PAGE NO.	SHEET NO.	REVISION NO.	TITLE	PAGE NO.	SHEET NO.	REVISION NO.	TITLE
001	A01	A	SCHEMATIC DIAGRAM LIST				
002	E01		SYSTEM CONFIGURATION				
003	E02		SINGLE LINE DIAGRAM				
004	J01	B	OUTLINE-1				
005	J02		OUTLINE-2				
006	K01		EXTERNAL SIGNAL TERMINAL BLOCK				


三角画法
尺度 SCALE

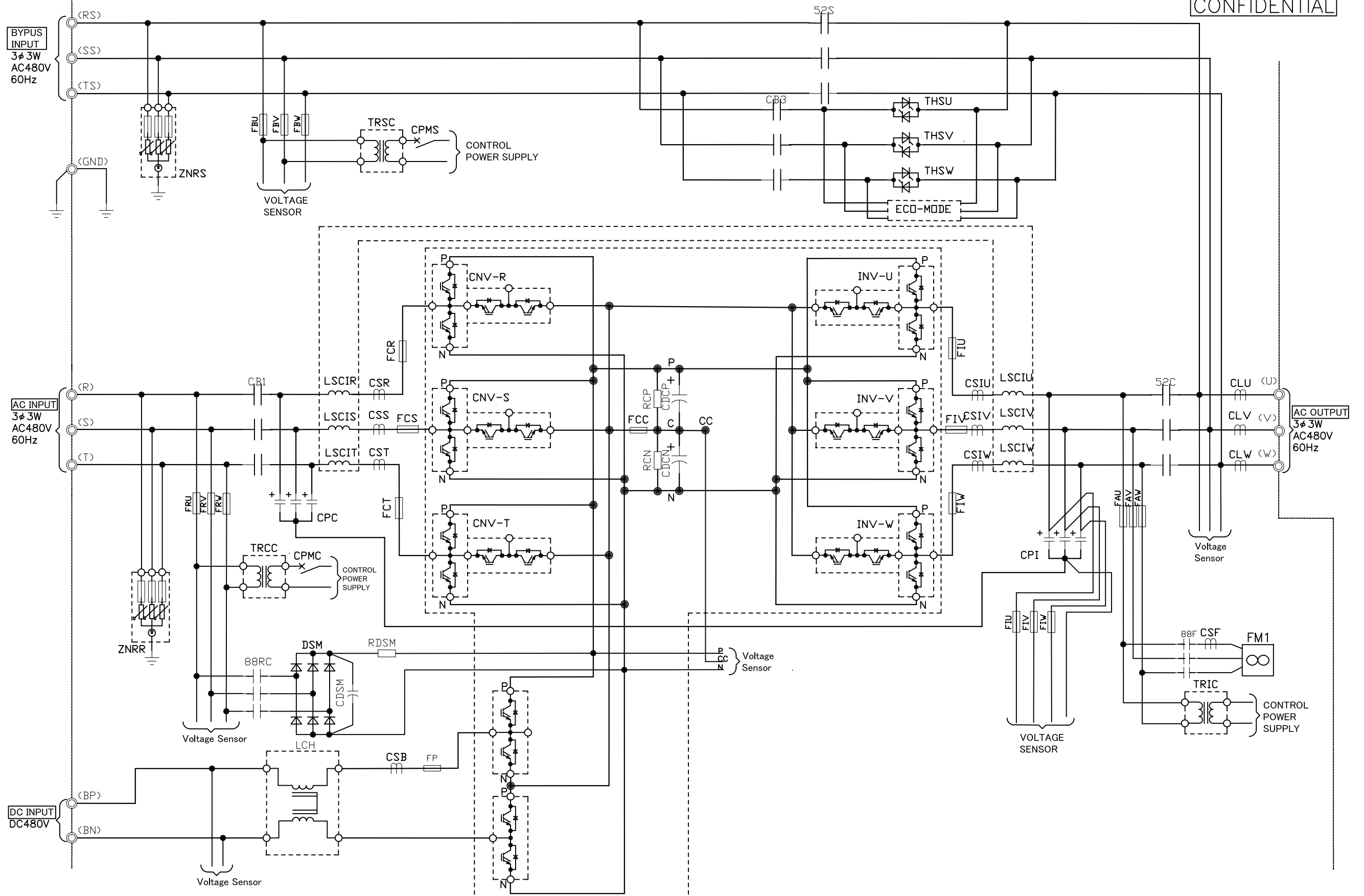
出図先

UG設

控

計

			TITLE	SHEETNo. A01
			SCHEMATIC DIAGRAM LIST	BOARDNo.
		作成日付 DATE	FEB .23 .2015	DWG.No. 3DAA4391
B	2015.05.15 M. Ohno	作成・照査 DRAWN	M. Ohno · M. Toyoda	PAGENO. 001/006
A	First drawing	設計・検認 APPROVED	M. Ohno · H. Nagano	



三角画法
尺度 SCALE

出図先

UG設

控

計

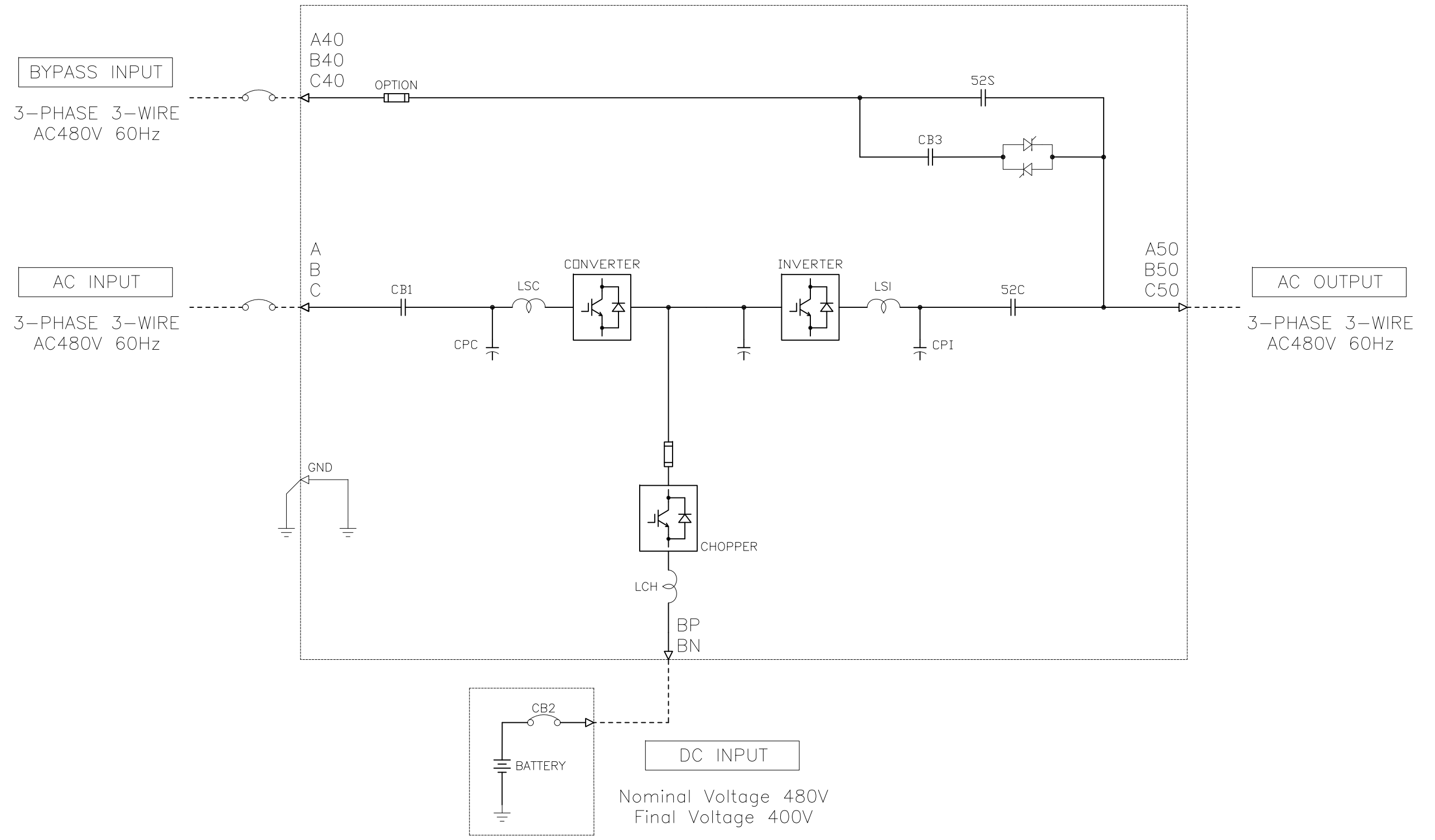
		TITLE	SHEETNo.
作成日付 DATE	FEB.23.2015	SYSTEM CONFIGURATION	E01
作成・照査 DRAWN	M.Ohno・M.Toyoda	DWG.No.	BOARDNo.
設計・検認 APPROVED	M.Ohno・H.Nagano	3DAA4391	PAGENO.
			002/006

図番 3DAA4391

記録

M-L-2

100kVA 90kW UPS



三角画法
尺度 SCALE
:

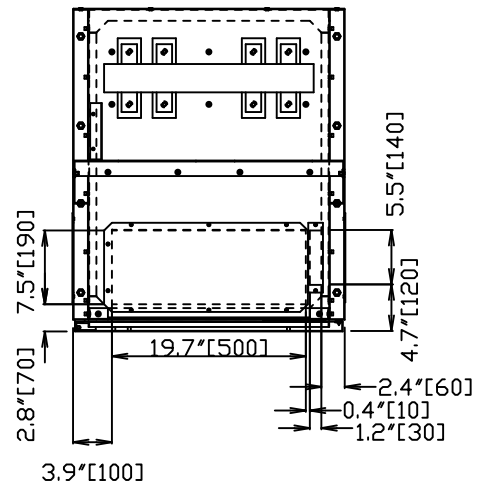
出図先

UG設

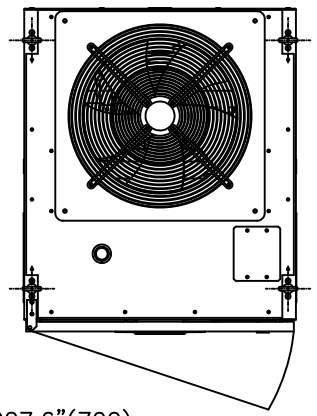
控

計

			TITLE	SHEETNo.
			SINGLE LINE DIAGRAM	E02
作成日付 DATE	FEB.23.2015	作成・照査 DRAWN M.Ohno · M.Toyoda 設計・検認 APPROVED M.Ohno · H.Nagano	BOARDNo.	PAGENO.
作成・照査 DRAWN	M.Ohno · M.Toyoda		DWG.No.	003/006
設計・検認 APPROVED	M.Ohno · H.Nagano			



A-A

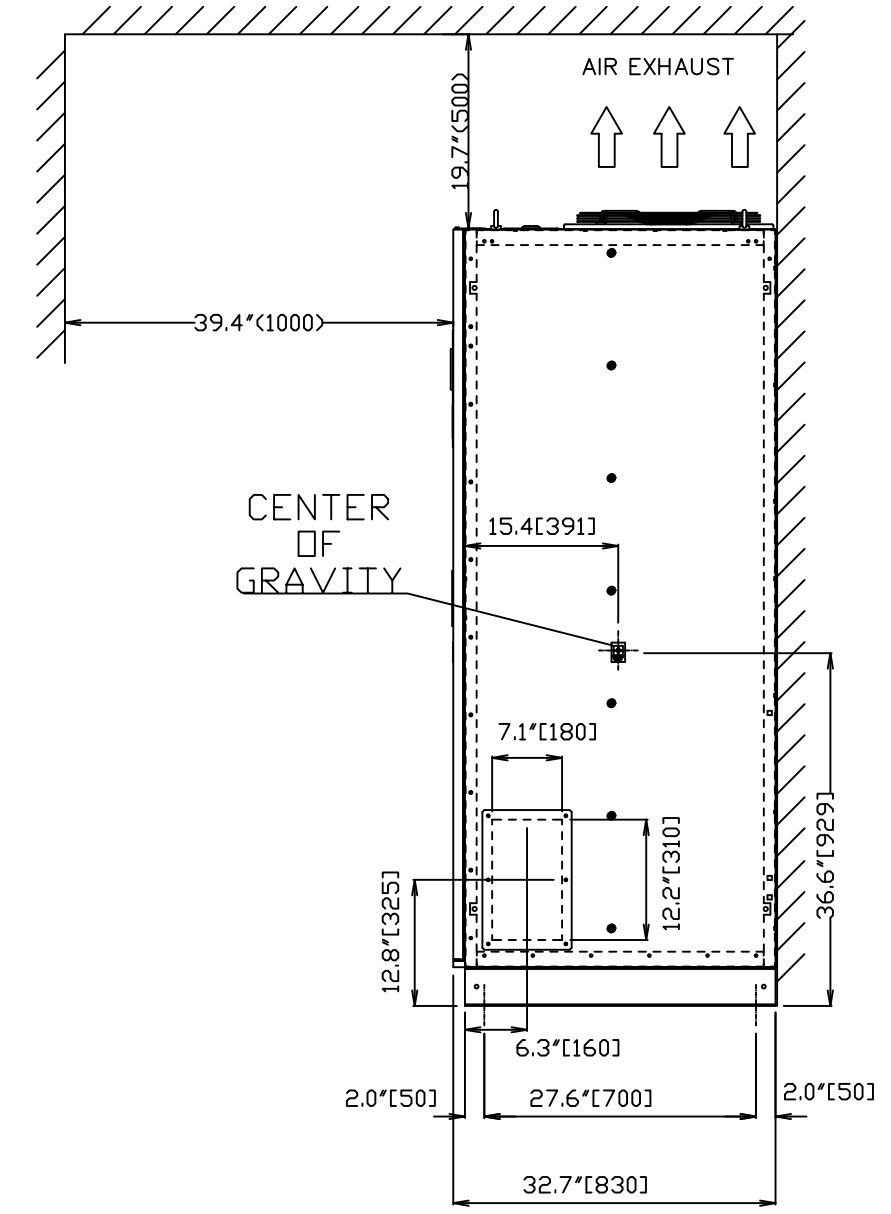
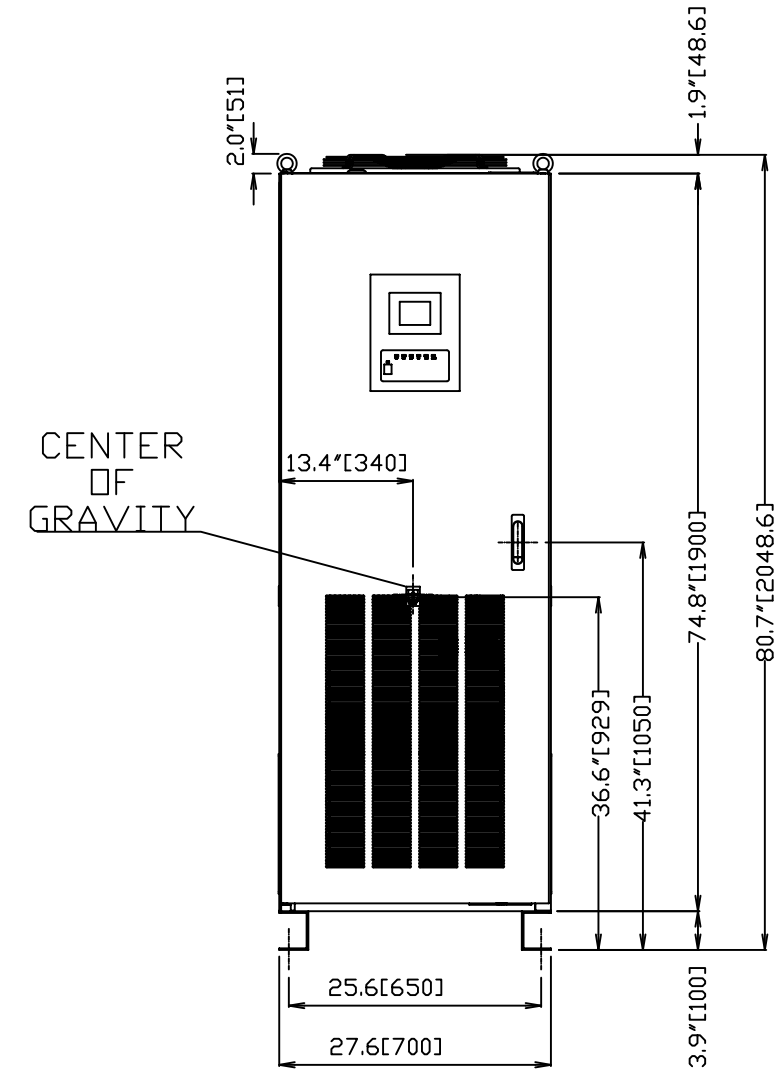


R27.6"(700)
DOOR SWING
88° MAX

NOTES

- 1. DIMENSIONS ARE SHOWN IN INCHES (MILLIMETERS).
- 2. SIDE SPACE '1"(25)' IS NOT REQUIRED WHEN SIDECARS ARE USED.
- 3. CABINET SHOULD BE MAINTAINED UPRIGHT WITHIN ±15° DURING HANDLING.
- 4. APPROXIMATE WEIGHTS

100KVA : 771lbs (350kg)



三角画法
尺度 SCALE
:

出図先

UG設

控

計

			TITLE	SHEETNo.
			OUT LINE-1	J01
		作成日付 DATE	FEB.23.2015	BOARDNo.
		作成・照査 DRAWN	M.Ohno · M.Toyoda	PAGENo.
		設計・検認 APPROVED	M.Ohno · H.Nagano	004/006
B	2015.05.15	M. Ohno	DWG.No. 3DAA4391	

図番 3DAA4391

記録

M-L-2

A

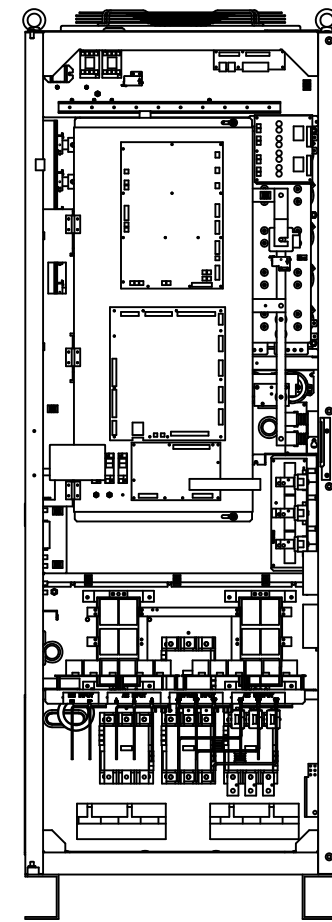
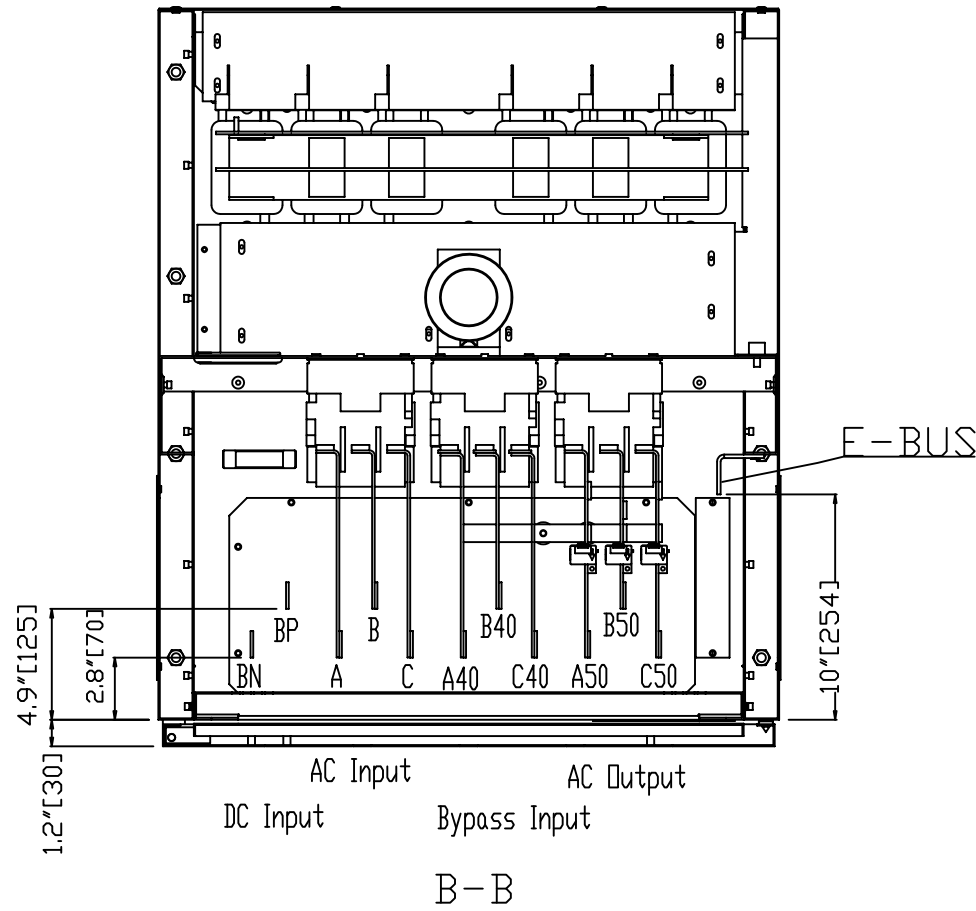
B

C

D

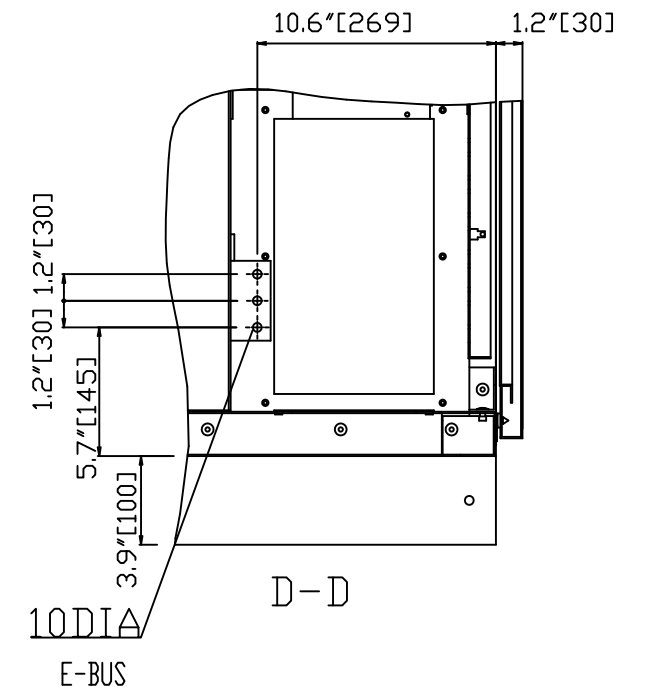
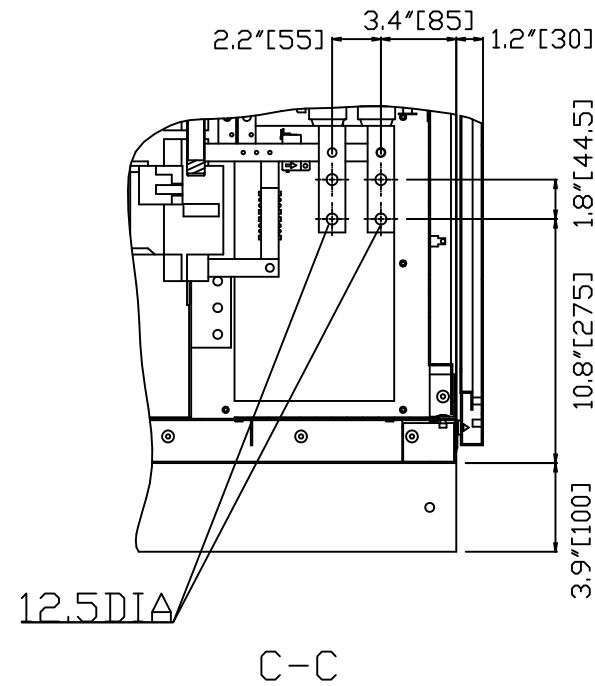
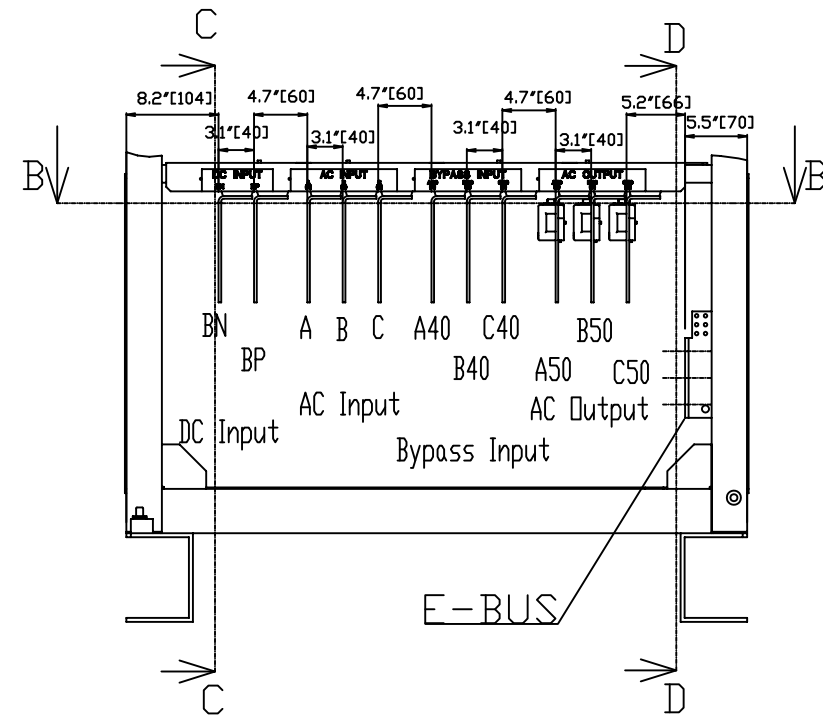
E

F



NOTES

- 5. EXTERNAL WIRING MATERIALS FOR AC INPUT, DC INPUT, BYPASS INPUT AND AC OUTPUT SHOULD BE SUPPLIED BY CUSTOMER (OUT OF SCOPE OF SUPPLY FROM MITSUBISHI).
- 6. A, B, C CLOCKWISE ROTATION



三角画法
尺度 SCALE

出図先

UG設

控

計

			TITLE	SHEETNo.
			作成日付 DATE	OUTLINE-2
		作成・照査 DRAWN	DWG.No.	BOARDNo.
		設計・検認 APPROVED	3DAA4391	PAGENO.
				005/006

図番 3DAA4391

記録

M-L-2

(OPTION)
TO I02:
EXTERNAL I/F BOARD

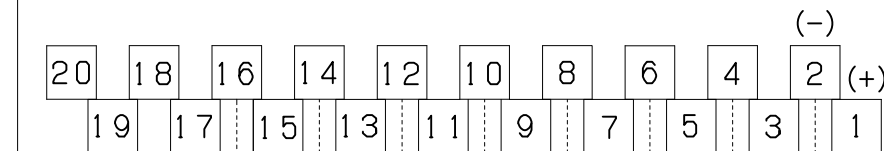
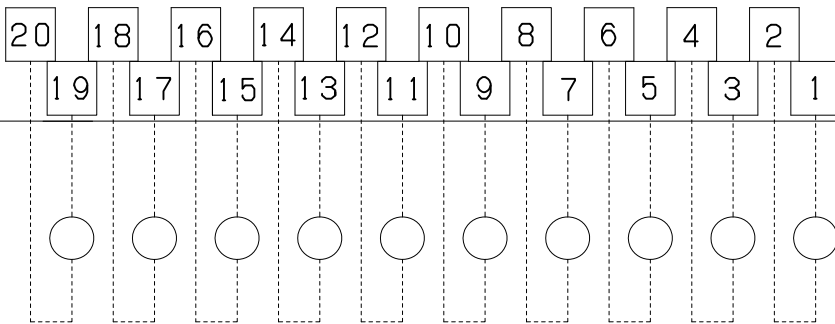
CN82
(HIF-16P)

I01

N.C.

TN2
(TN-20P)

TN1
(TN-20P)



- 52C CLOSE
- OUT8: TOTAL ALARM
- OUT7: SPARE
- OUT6: OVERLOAD
- OUT5: BATTERY LOW VOLTAGE
- OUT4: CONVERTER OPERATION
- OUT3: BATTERY OPERATION
- OUT2: LOAD ON INVERTER
- OUT1: LOAD ON BYPASS
- SUMMARY ALARM

- REMOTE EPO
- IN4: POWER DEMAND
- IN3: BATTERY TEMP.HIGH
- IN2: REMOTE INVERTER STOP
- IN1: REMOTE INVERTER START
- LOAD CIRCUIT SWITCH
- 52L AX
- CB2 AX
- CB2 UVT
- BATTERY BREAKER PANEL
- UVT

三角画法
尺度 SCALE

出図先

UG設

控

計

MITSUBISHI ELECTRIC

作成日付 DATE: FEB.23.2015

作成・照査 DRAWN: M.Ohno · M.Toyoda

設計・検認 APPROVED: M.Ohno · H.Nagano

TITLE	SHEETNo.
TERMINAL BLOCK	K01
DWG.No.	BOARDNo.
3DAA4391	
	PAGENO.
	006/006