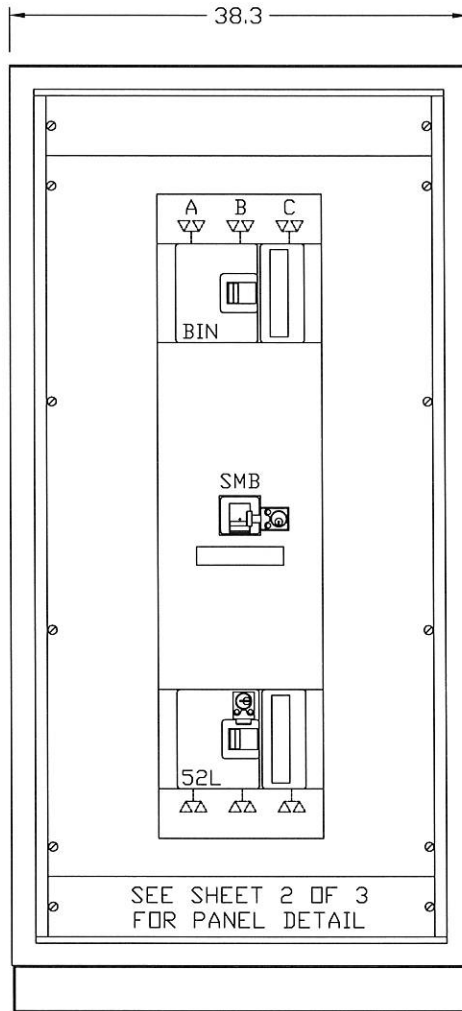
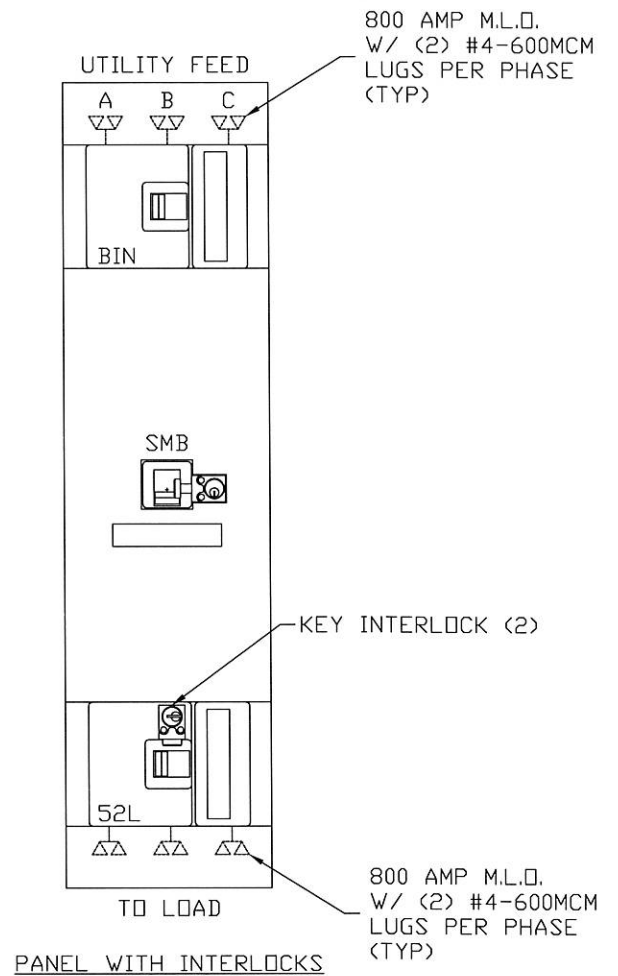


FRONT VIEW
DOOR SHOWN



FRONT VIEW
DOOR REMOVED

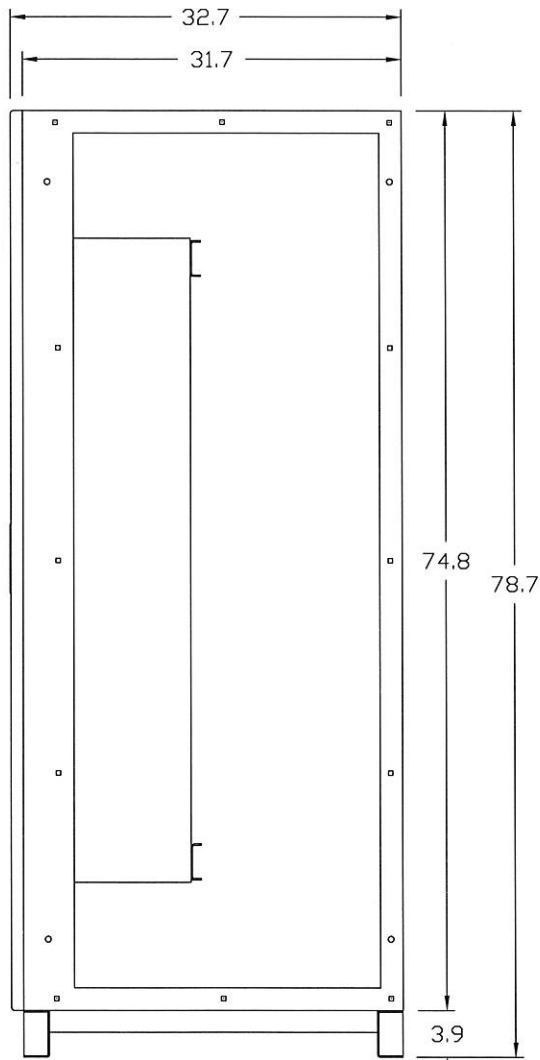


PANEL WITH INTERLOCKS

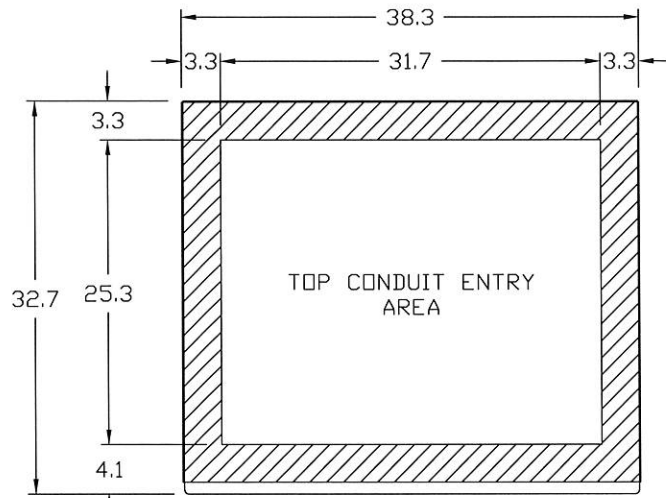
This Document Contains Proprietary and Confidential Information.
Duplication, reproduction or use of this document or its contents in any form other than as expressly permitted by Kinney Electrical Mfg. Co., is prohibited.

MITSUBISHI ELECTRIC POWER PRODUCTS, INC.
WARRENDALE, PA

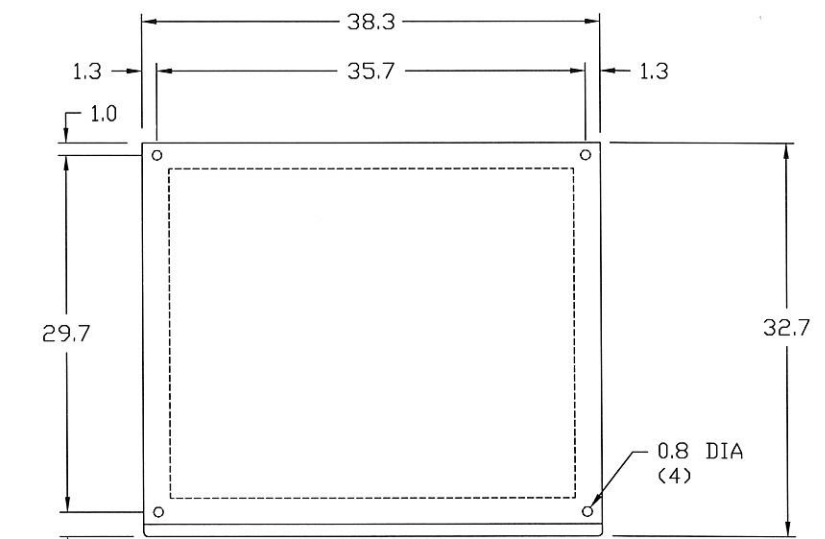
REVISIONS			PART NO. SEE TABLE		
1	BREAKER CALLOUT BIN WAS MBN (RSH) 04-13-11		DESCRIPTION 3 BRK FREE STANDING MBP PANEL - 800 AMP MAX. W/ KEY INTERLOCK (KO)		
			MEPPI APPROVED	KINNEY APPROVED	REVISION 1
			DATE 03-01-2011	CAD FILE	DRAWING NO. SHEET
			DRAWN BY RFM / RH	MBF99000800A04	M0000442 1 OF 3



RIGHT SIDE VIEW
SIDE COVER REMOVED



PLAN VIEW
TOP CONDUIT ENTRY DETAIL



PLAN VIEW
ANCHOR DETAIL

This Document Contains Proprietary and Confidential Information.
Duplication, reproduction or use of this document or its contents in any form other than as expressly permitted by Kinney Electrical Mfg. Co., is prohibited.

MITSUBISHI ELECTRIC POWER PRODUCTS, INC.
WARRENDALE, PA

REVISIONS			PART NO.	SEE TABLE	
1	REVISED RIGHT SIDE VIEW & ANCHOR DETAIL (RSH) 04-21-11		DESCRIPTION	3 BRK FREE STANDING MBP PANEL - 800 AMP MAX. W/ KEY INTERLOCK (KO)	
			MEPPI APPROVED	KINNEY APPROVED	REVISION 1
			DATE	03-01-2011	CAD FILE
			DRAWN BY	RFM /RH	DRAWING NO. M0000442
				MBF99000800A04	SHEET 2 OF 3

