

# MITSUBISHI 9900C 1050kVA UPS DIRECT CABLE CONFIGURATION

CUSTOMER -  
PROJECT NUMBER -  
PROJECT LOCATION -

## TABLE OF CONTENTS

SHEET NO.	TITLE
01	COVER SHEET
02	UPS & SIDECAR DIRECT CABLE CONFIGURATION
03	1050kVA UPS DETAIL
04	UPS ELECTRICAL SCHEMATIC
05	UPS ONE-LINE DIAGRAM
06	UPS CONTROL WIRING DIAGRAM
07	
08	
09	
10	
11	
12	
13	
14	
15	

REV. NO.	DESCRIPTION
4	DELETED BUSS DETAILS ADDED REFERENCE FOR SHIPPING SPLIT ASSEMBLY DETAILS P.GUERRIERI 10/6/2016
5	ADDED CENTER OF MASS DIMENSIONS TO SHEET 1 AND COVER SHEET Z.ZAJAC 11/21/17
6	HID PANELS ON SHEET 3 FOR DIMENSIONS J.MENDEZ 3/27/2018

FABRICATION TOLERANCE	
NOMINAL SIZE	TOLERANCE
ANGLES	±0.01°
HOLE TO MATERIAL EDGE	±0.01
HOLE TO FORMED EDGE	±0.01
HOLE TO HOLE	±0.005
FORMED EDGE TO FORMED EDGE	±0.01
FORMED EDGE TO WELDED EDGE < 48.0	±0.03
FORMED EDGE TO WELDED EDGE > 48.0	±0.06
PANEL DISTORTION OVER 48.0in	0.03 MAX

DIMENSIONS IN:  
IN [MM] (REP)

SCALE  
- NTS -

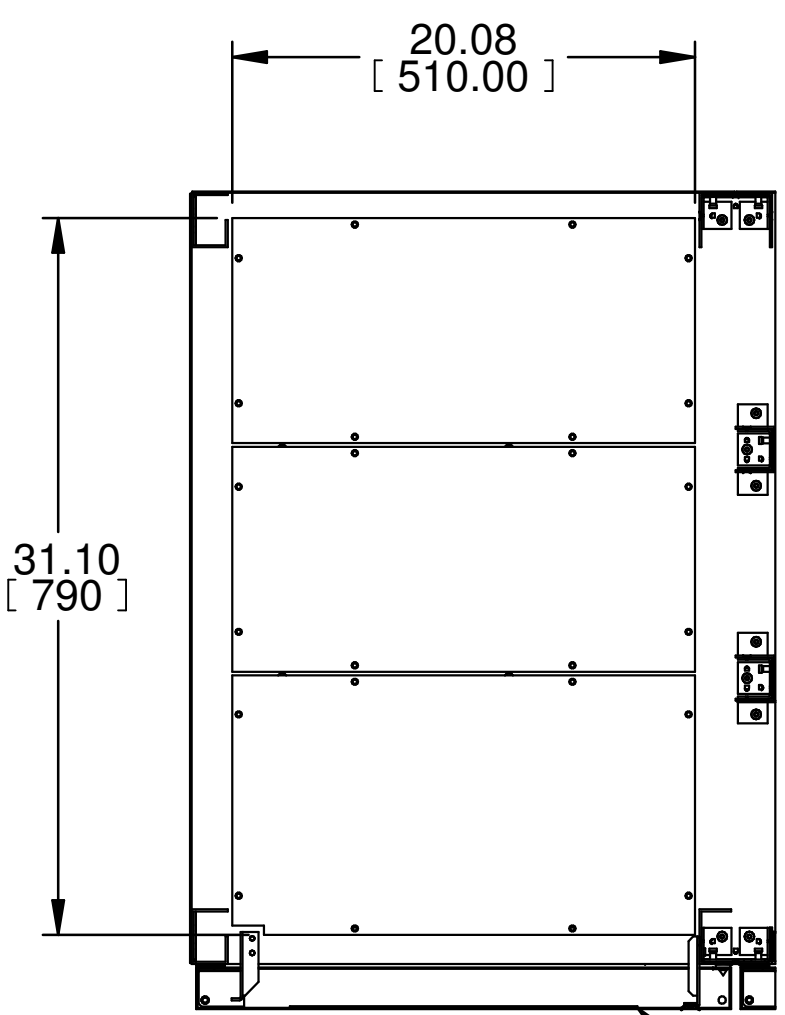
PROPRIETARY  
This document is the property of Mitsubishi Electric Power Products, Inc. and contains proprietary and confidential information which must not be duplicated, used or disclosed other than as expressly authorized by Mitsubishi Electric Power Products, Inc.

DRAFTER P. GUERRIERI	DATE 10/6/16
APPROVED N. RIEMER	DATE 10/10/16

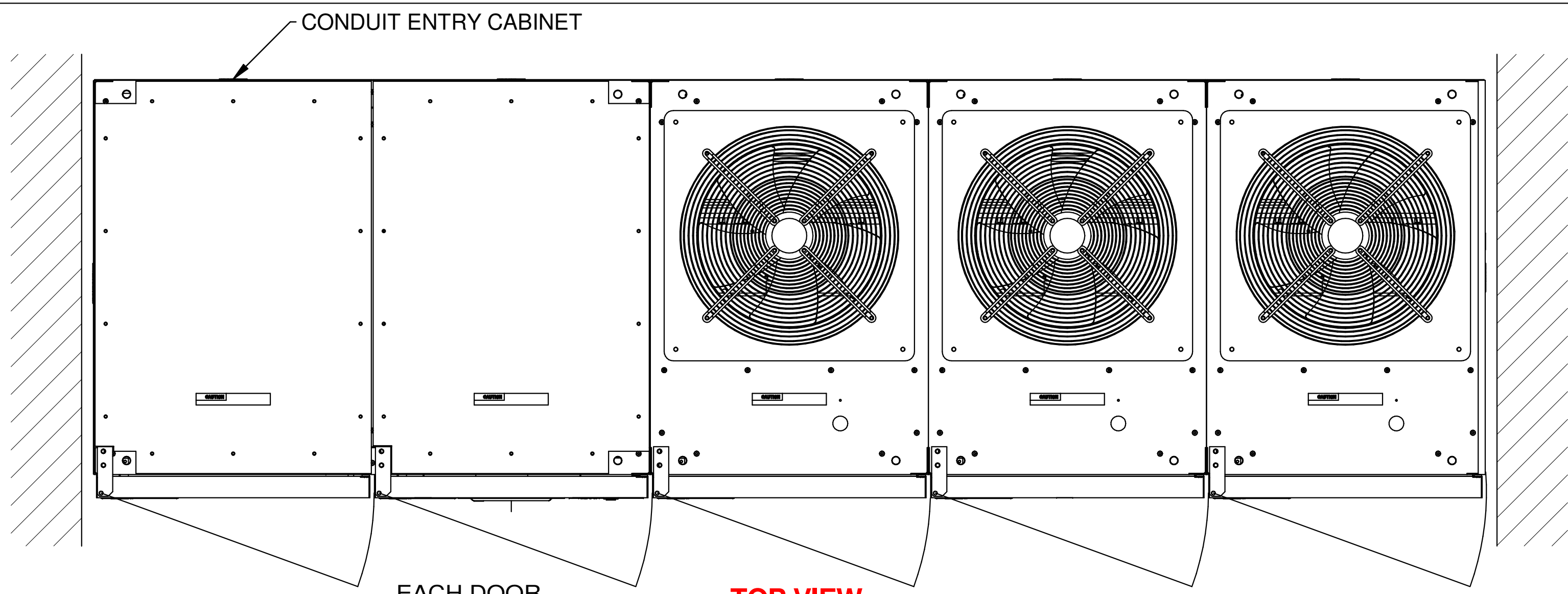
**MITSUBISHI ELECTRIC**

TITLE  
**9900C UPS MODULE**

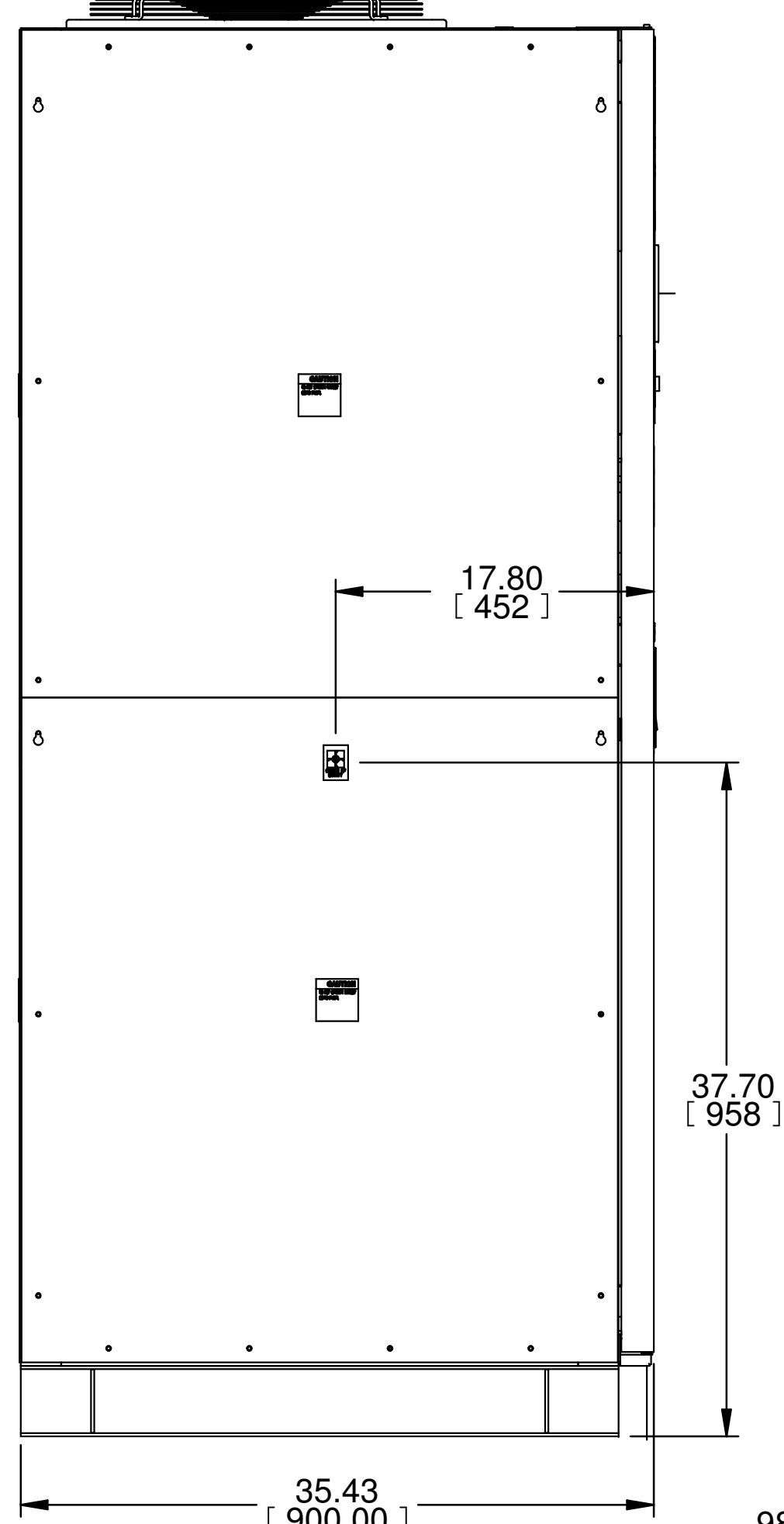
DWG. NO. **UD-100354** SHEET 1 OF 6 REV. **6**



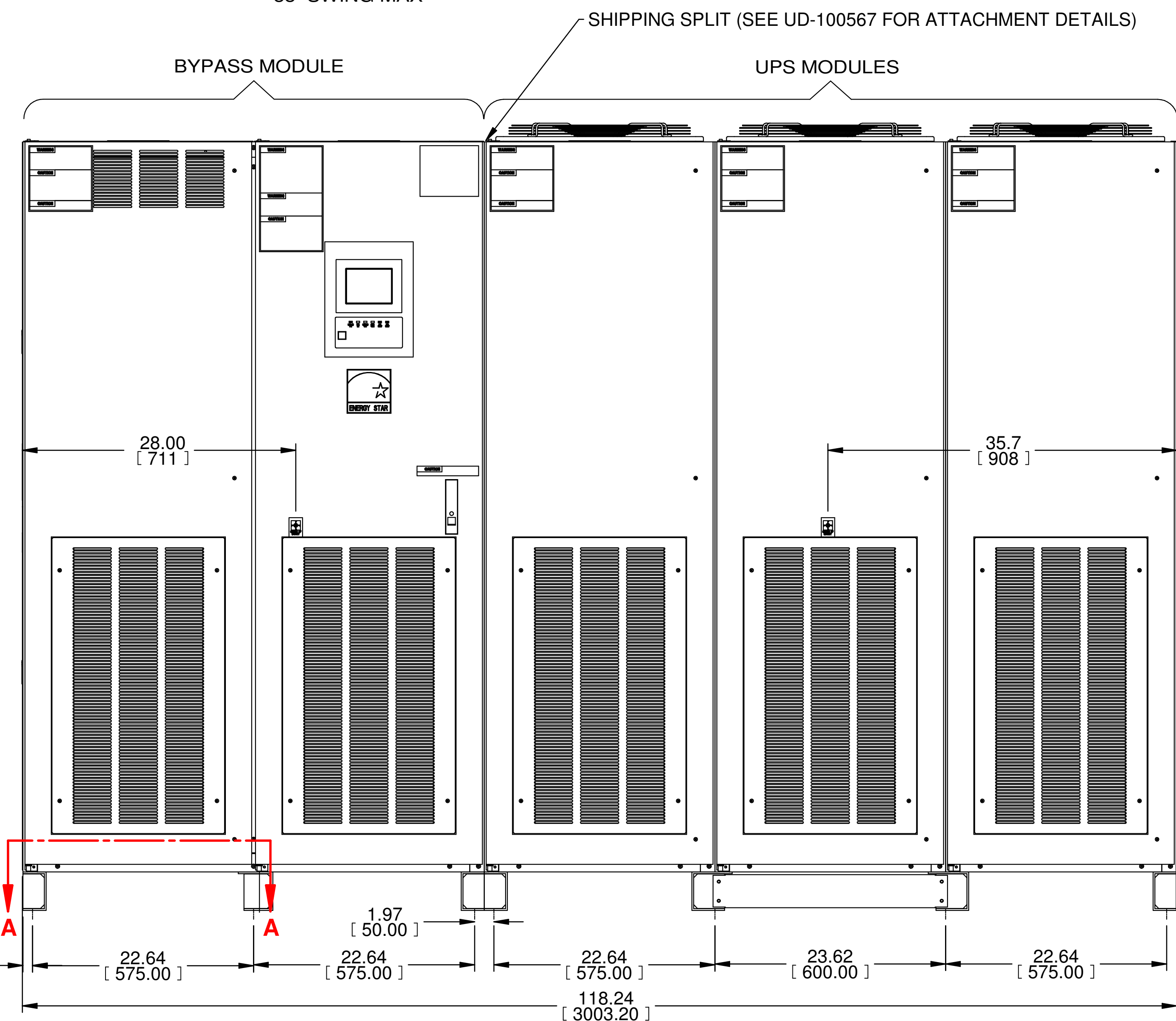
**SECTION A-A**  
FRONT  
**BOTTOM CONDUIT ENTRY**



**TOP VIEW**



**LEFT SIDE VIEW**

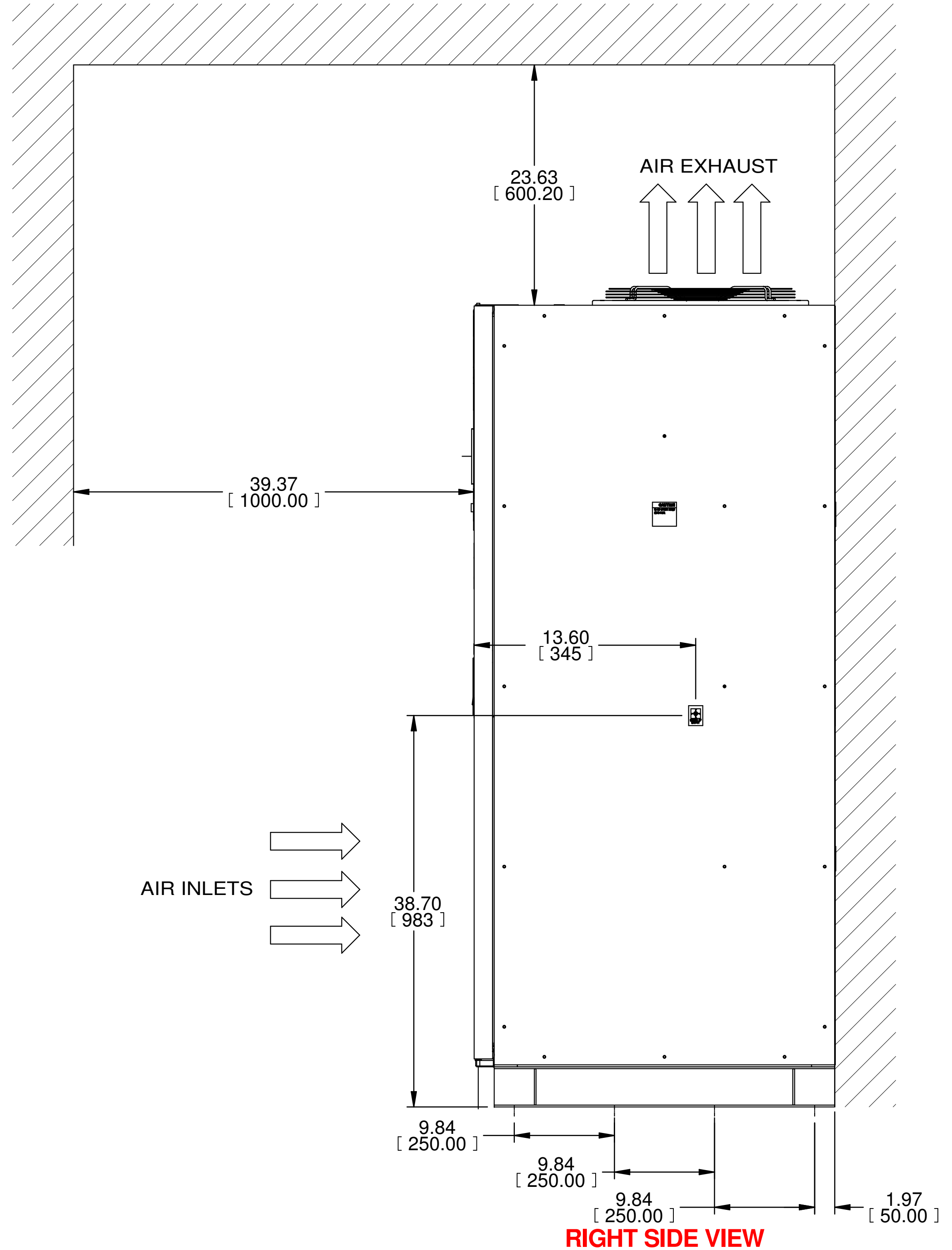


**FRONT VIEW**

**NOTES:**

1. DIMENSIONS ARE SHOWN IN INCHES [MILLIMETERS]
2. SIDE SPACE 1.00 [25] IS NOT REQUIRED WHEN SIDECARS ARE USED.
3. CABINET SHOULD BE MAINTAINED UPRIGHT WITHIN +/-15 DEGREES DURING HANDLING.
4. EACH BASE HAS 2 OR 4 0.8 INCH [20] DIAMETER HOLES TO FIX UPS ON THE GROUND.
5. APPROXIMATE WEIGHT:
 

UPS MODULES	4960 LBS. (2250 kg)
BYPASS MODULE	1653 LBS. (750 kg)
<b>TOTAL</b>	<b>6613 LBS. (3000 kg)</b>
6. EXTERNAL WIRES OR CABLES SHALL BE PROVIDED BY CUSTOMERS FOR AC-INPUT, DC-INPUT, BYPASS-INPUT, AND AC-OUTPUT. (OUT OF MITSUBISHI PROVISION)
7. ROTATION OF A, B, AND C PHASE IS CLOCKWISE.
8. DC BUSS HAS PROVISIONS FOR EIGHT (8) NEMA 2 HOLE LUGS
9. AC BUSS HAS PROVISIONS FOR SIX (6) NEMA 2 HOLE LUGS



**RIGHT SIDE VIEW**

REVISIONS	DESCRIPTION	DATE
4.	DELETED BUSS DETAILS ADDED REFERENCE FOR SHIPPING SPLIT ASSEMBLY DETAILS P.GUERRIERI 10/6/2016	
5.	ADDED CENTER OF MASS DIMENSIONS TO SHEET 1 AND COVER SHEET Z.ZAJAC 11/21/17	
6.	HID PANELS ON SHEET 3 FOR DIMENSIONS J.MENDEZ 3/27/2018	

FABRICATION TOLERANCE	
NOMINAL SIZE	TOLERANCE
ANGLES	±0.01°
HOLE TO MATERIAL EDGE	±0.01
HOLE TO FORMED EDGE	±0.01
HOLE TO HOLE	±0.005
FORMED EDGE TO FORMED EDGE	±0.01
FORMED EDGE TO WELDED EDGE < 48.0	±0.03
FORMED EDGE TO WELDED EDGE > 48.0	±0.06
PANEL DISTORTION OVER 48.0in	0.03 MAX

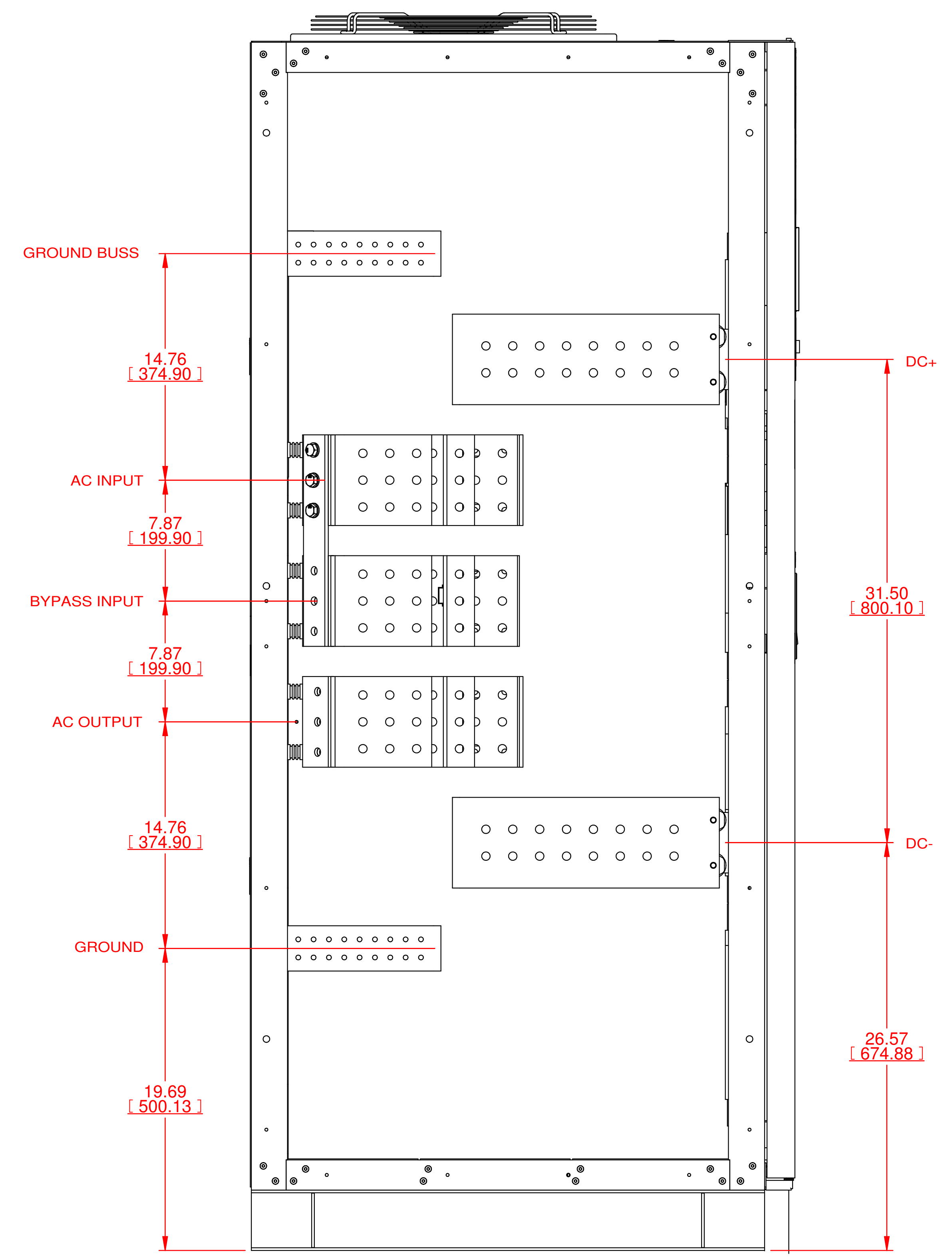
DIMENSIONS IN:	SCALE
IN [MM] (REP)	- NTS -
PROPRIETARY	
This document is the property of Mitsubishi Electric Power Products, Inc. and contains proprietary and confidential information which must not be duplicated, used or disclosed other than as expressly authorized by Mitsubishi Electric Power Products, Inc.	

DRAFTER	DATE
APPROVED	DATE
P. GUERRIERI	10/6/16
N. RIEMER	10/10/16

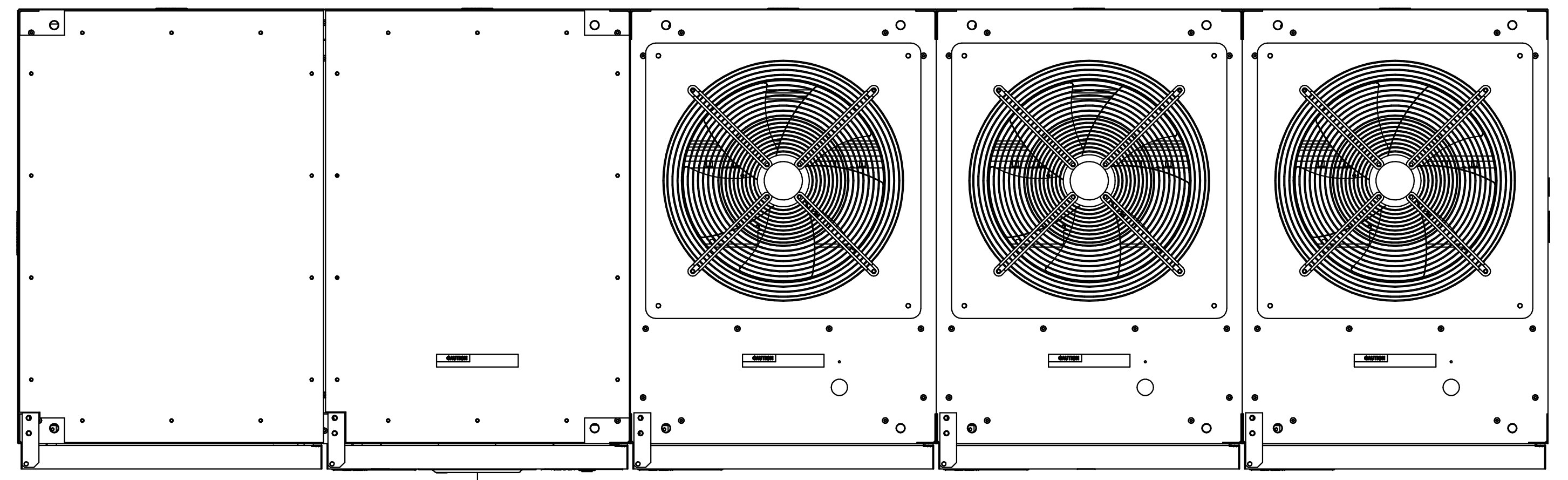
**MITSUBISHI ELECTRIC**

TITLE  
**9900C UPS MODULE**

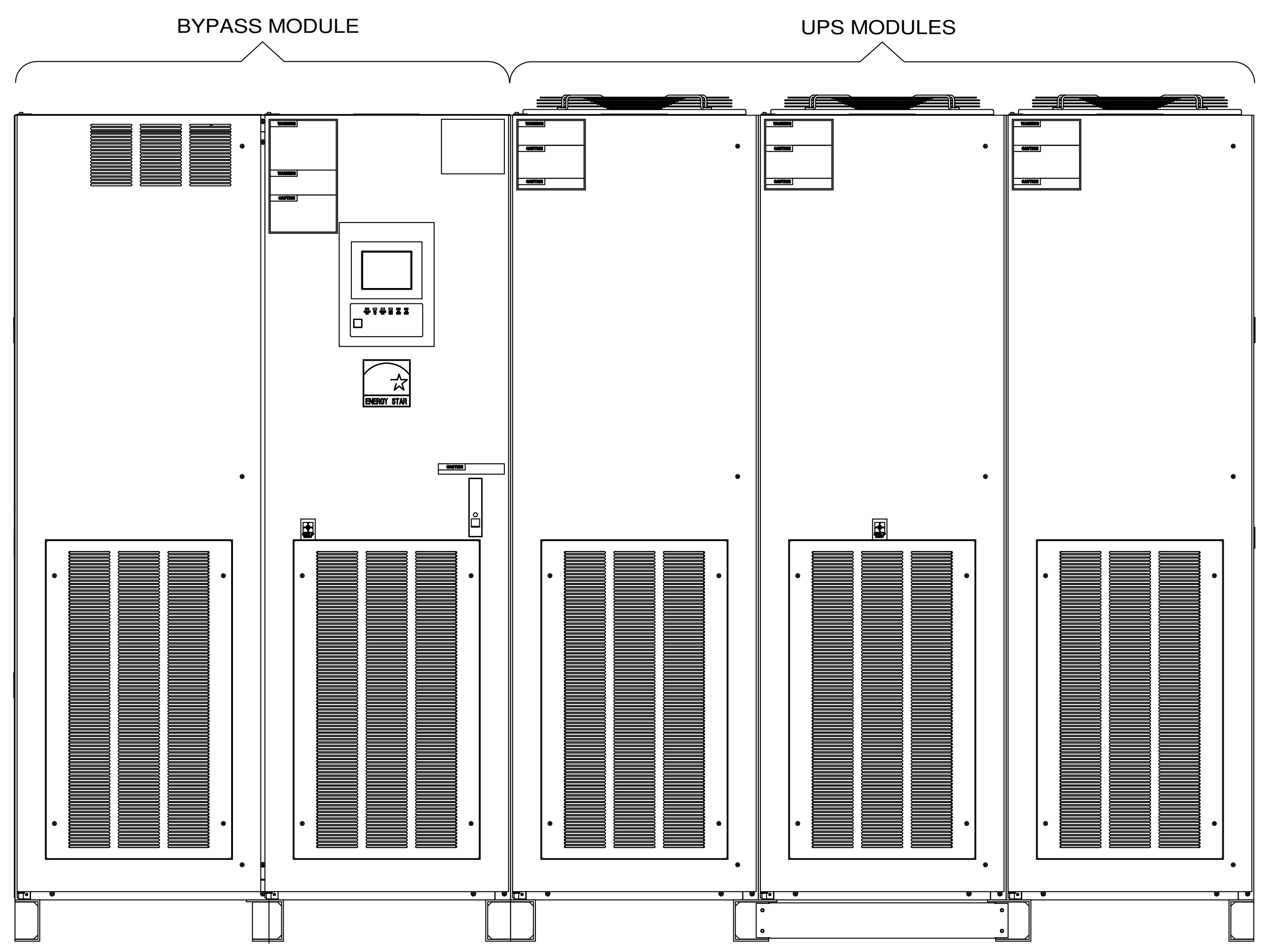
DWG. NO. UD-100354 SHEET 2 OF 6 REV. 6



**LEFT SIDE VIEW**  
PANELS NOT SHOWN



**TOP VIEW**  
PANEL NOT SHOWN



**FRONT VIEW**  
PANEL NOT SHOWN

REVISIONS
4. DELETED BUSS DETAILS ADDED REFERENCE FOR SHIPPING SPLIT ASSEMBLY DETAILS P. GUERRIERI 10/6/2016
5. ADDED CENTER OF MASS DIMENSIONS TO SHEET 1 AND COVER SHEET Z. ZAJAC 11/21/17
6. HID PANELS ON SHEET 3 FOR DIMENSIONS J. MENDEZ 3/27/2018

FABRICATION TOLERANCE	
NOMINAL SIZE	TOLERANCE
ANGLES	±0.01°
HOLE TO MATERIAL EDGE	±0.01
HOLE TO FORMED EDGE	±0.01
HOLE TO HOLE	±0.005
FORMED EDGE TO FORMED EDGE	±0.01
FORMED EDGE TO WELDED EDGE < 48.0	±0.03
FORMED EDGE TO WELDED EDGE > 48.0	±0.06
PANEL DISTORTION OVER 48.0in	0.03 MAX

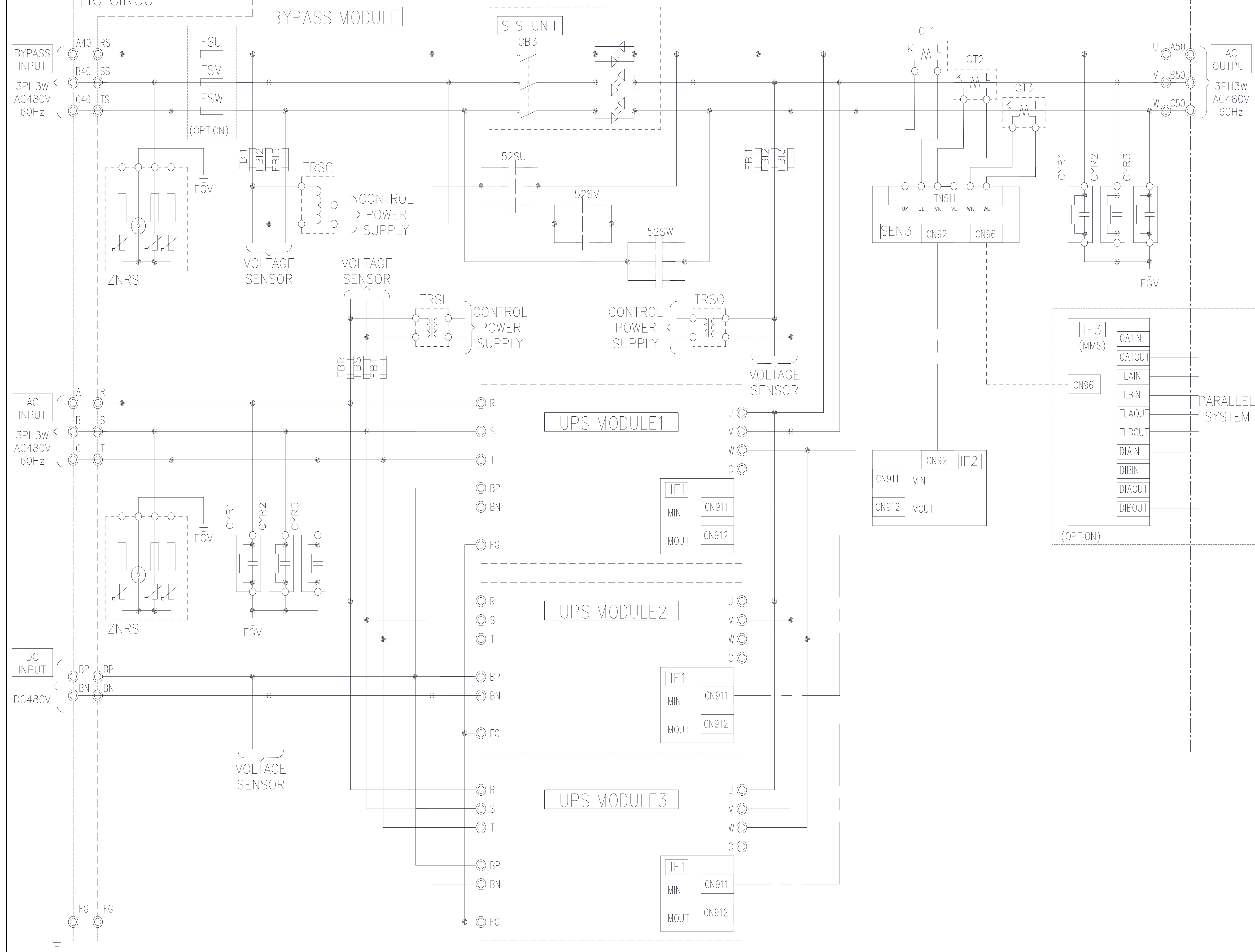
DIMENSIONS IN:	SCALE
IN [MM] (REP)	
PROPRIETARY	
This document is the property of Mitsubishi Electric Power Products, Inc. and contains proprietary and confidential information which must not be duplicated, used or disclosed other than as expressly authorized by Mitsubishi Electric Power Products, Inc.	

DRAFTER	DATE
APPROVED	DATE
P. GUERRIERI	10/6/16
N. RIEMER	10/10/16

**MITSUBISHI ELECTRIC**

TITLE: **9900C UPS MODULE**

DWG. NO. UD-100354 SHEET 3 OF 6 REV. 6

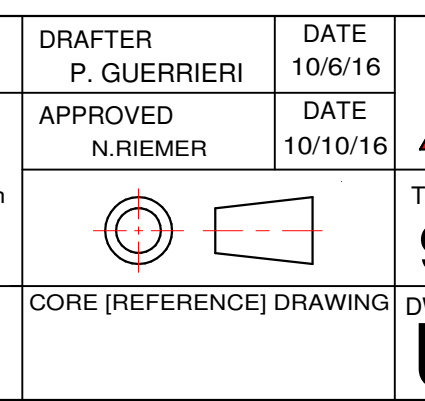


REVISONS	DETAILS
4.	DELETED BUSS DETAILS FOR SHIPPING SPLIT ASSEMBLY DETAILS P.GUERRIERI 10/6/2016
5.	ADDED CENTER OF MASS DIMENSIONS TO SHEET 1 AND COVER SHEET Z.ZAJAC 11/21/17
6.	HID PANELS ON SHEET 3 FOR DIMENSIONS J.J.MENDEZ 3/27/2018

FABRICATION TOLERANCE	
NOMINAL SIZE	TOLERANCE
ANGLES	±0.01°
HOLE TO MATERIAL EDGE	±0.01
HOLE TO FORMED EDGE	±0.01
HOLE TO HOLE	±0.005
FORMED EDGE TO FORMED EDGE	±0.01
FORMED EDGE TO WELDED EDGE < 48.0	±0.03
FORMED EDGE TO WELDED EDGE > 48.0	±0.06
PANEL DISTORTION OVER 48.0in	0.03 MAX

DIMENSIONS IN:	SCALE
IN [MM] (REP)	
PROPRIETARY	
This document is the property of Mitsubishi Electric Power Products, Inc. and contains proprietary and confidential information which must not be duplicated, used or disclosed other than as expressly authorized by Mitsubishi Electric Power Products, Inc.	

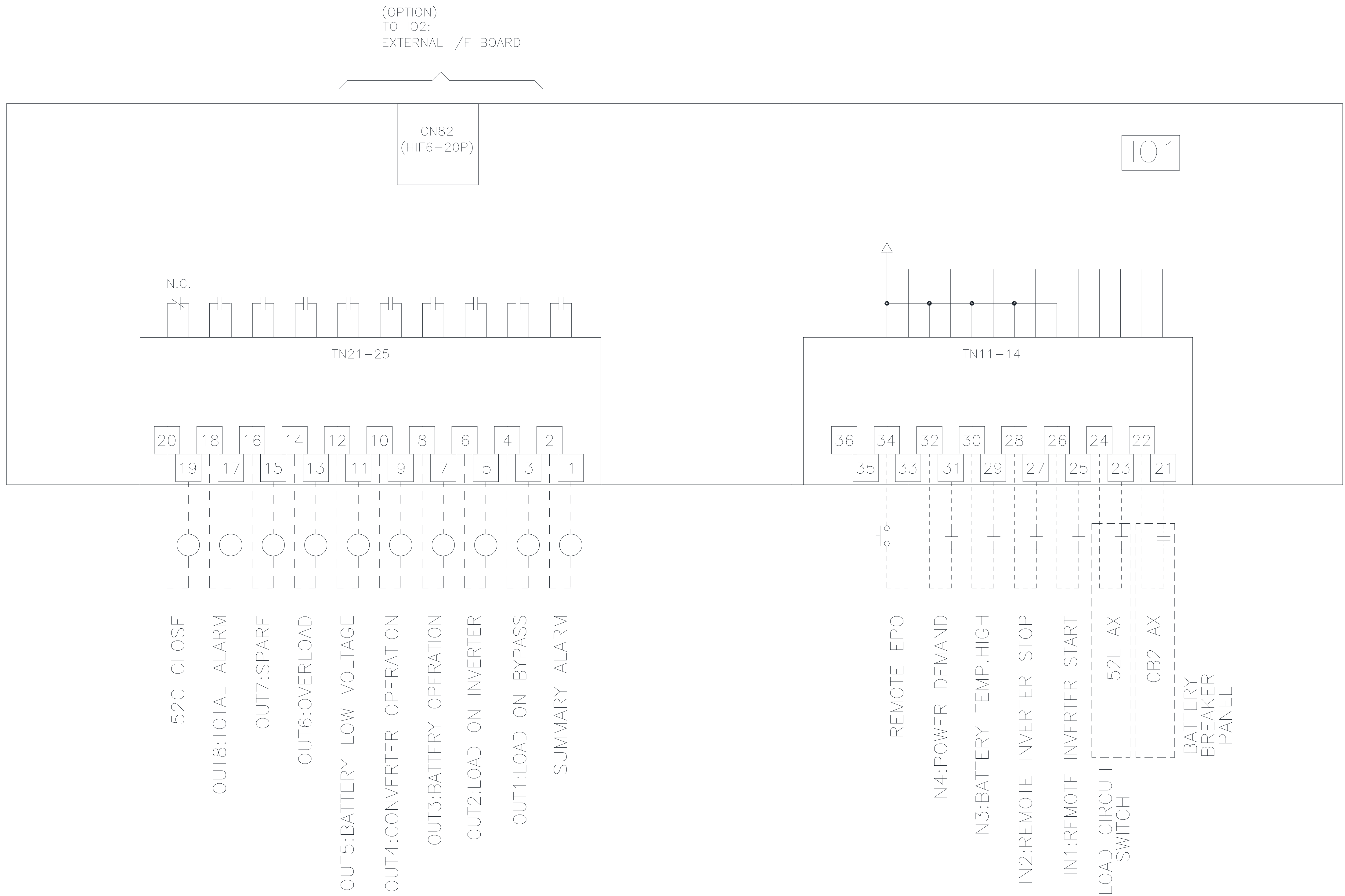
DRAFTER	DATE
APPROVED	DATE
P. GUERRIERI	10/6/16
N. RIEMER	10/10/16



**MITSUBISHI ELECTRIC**

TITLE  
**9900C UPS MODULE**

DWG. NO. UD-100354 SHEET 4 OF 6 REV. 6

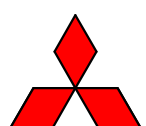


REVISIONS
4. DELETED BUSS DETAILS ADDED REFERENCE FOR SHIPPING SPLIT ASSEMBLY DETAILS P. GUERRIERI 10/6/2016
5. ADDED CENTER OF MASS DIMENSIONS TO SHEET 1 AND COVER SHEET Z. ZAJAC 11/21/17
6. HID PANELS ON SHEET 3 FOR DIMENSIONS J. MENDEZ 3/27/2018

FABRICATION TOLERANCE	
NOMINAL SIZE	TOLERANCE
ANGLES	±0.01°
HOLE TO MATERIAL EDGE	±0.01
HOLE TO FORMED EDGE	±0.01
HOLE TO HOLE	±0.005
FORMED EDGE TO FORMED EDGE	±0.01
FORMED EDGE TO WELDED EDGE < 48.0	±0.03
FORMED EDGE TO WELDED EDGE > 48.0	±0.06
PANEL DISTORTION OVER 48.0in	0.03 MAX

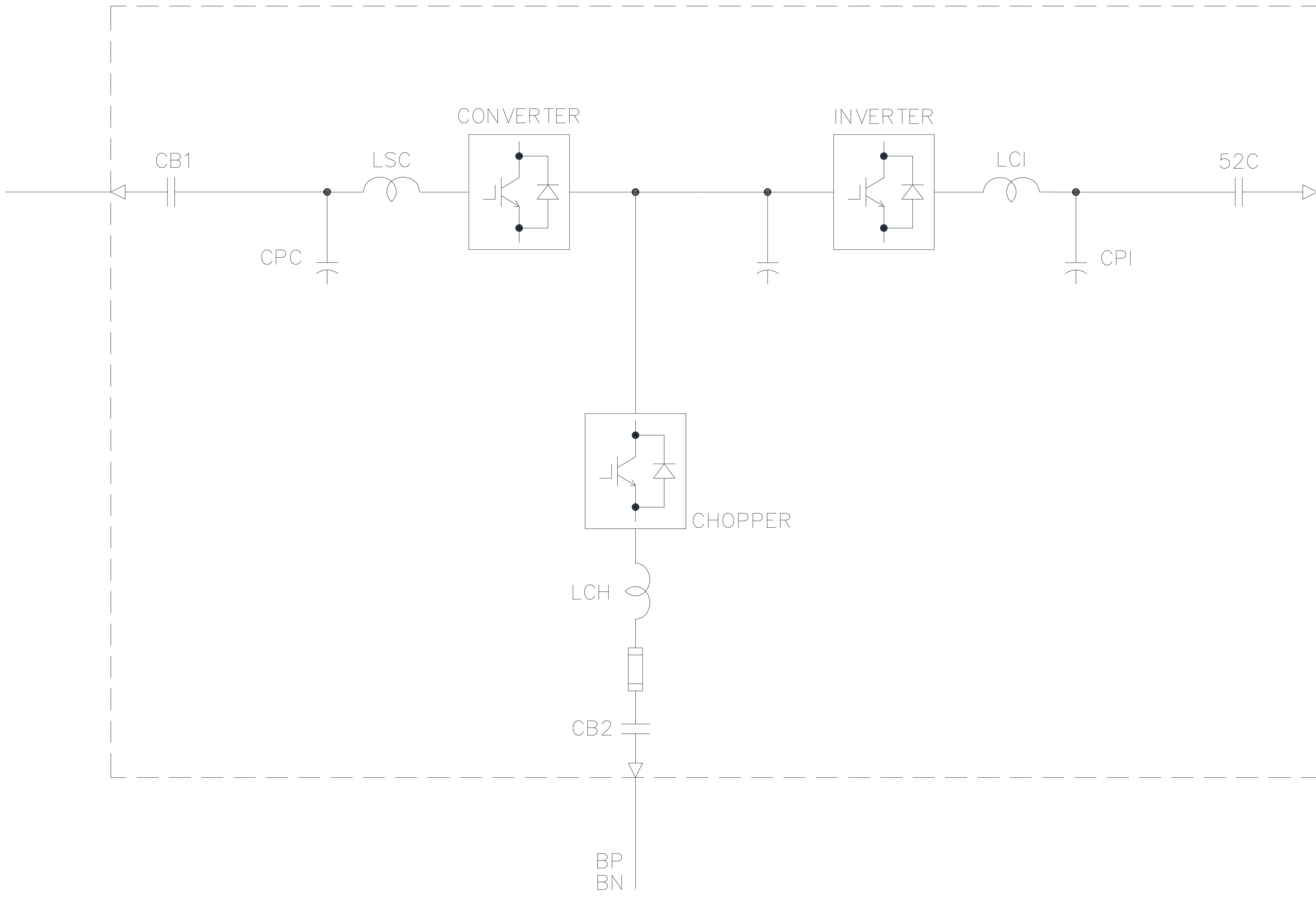
DIMENSIONS IN:		SCALE
IN	[MM] (REP)	
PROPRIETARY This document is the property of Mitsubishi Electric Power Products, Inc. and contains proprietary and confidential information which must not be duplicated, used or disclosed other than as expressly authorized by Mitsubishi Electric Power Products, Inc.		

DRAFTER	DATE
P. GUERRIERI	10/6/16
APPROVED	DATE
N. RIEMER	10/10/16


**MITSUBISHI ELECTRIC**  
 TITLE  
**9900C UPS MODULE**  
 DWG. NO. UD-100354 SHEET 5 OF 6 REV. 6

UPS MODULE (TYPICAL)

AC INPUT  
3-PHASE 3-WIRE  
AC480V 60Hz



AC OUTPUT  
3-PHASE 3-WIRE  
AC480V 60Hz

REVISIONS
4. DELETED BUSS DETAILS ADDED REFERENCE FOR SHIPPING SPLIT ASSEMBLY DETAILS P. GUERRIERI 10/6/2016
5. ADDED CENTER OF MASS DIMENSIONS TO SHEET 1 AND COVER SHEET Z. ZAJAC 11/21/17
6. HID PANELS ON SHEET 3 FOR DIMENSIONS J. MENDEZ 3/27/2018

FABRICATION TOLERANCE	
NOMINAL SIZE	TOLERANCE
ANGLES	±0.01°
HOLE TO MATERIAL EDGE	±0.01
HOLE TO FORMED EDGE	±0.01
HOLE TO HOLE	±0.005
FORMED EDGE TO FORMED EDGE	±0.01
FORMED EDGE TO WELDED EDGE < 48.0	±0.03
FORMED EDGE TO WELDED EDGE > 48.0	±0.06
PANEL DISTORTION OVER 48.0in	0.03 MAX

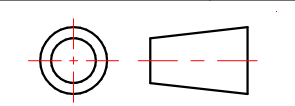
DIMENSIONS IN:	SCALE
IN [MM] (REP)	

DRAFTER	DATE
P. GUERRIERI	10/6/16
APPROVED	DATE
N. RIEMER	10/10/16

**MITSUBISHI ELECTRIC**

TITLE  
**9900C UPS MODULE**

DWG. NO. UD-100354 SHEET 6 OF 6 REV. 6



PROPRIETARY  
This document is the property of Mitsubishi Electric Power Products, Inc. and contains proprietary and confidential information which must not be duplicated, used or disclosed other than as expressly authorized by Mitsubishi Electric Power Products, Inc.