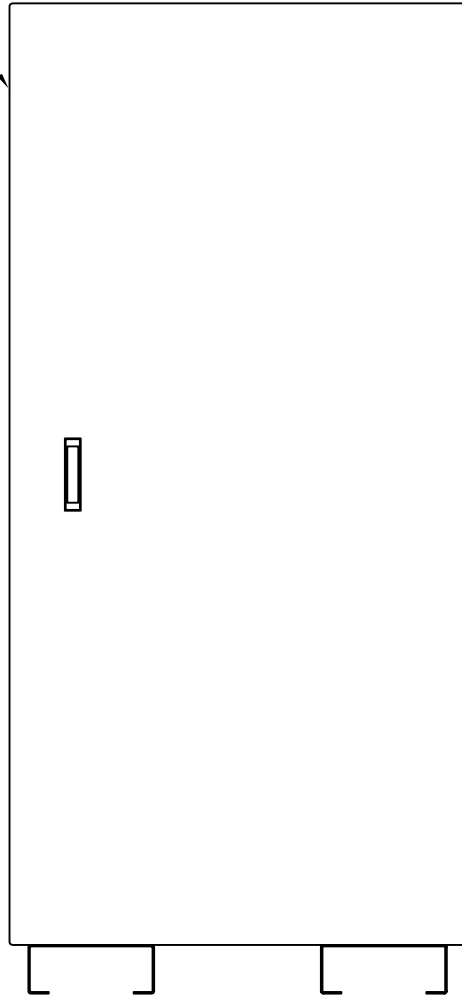
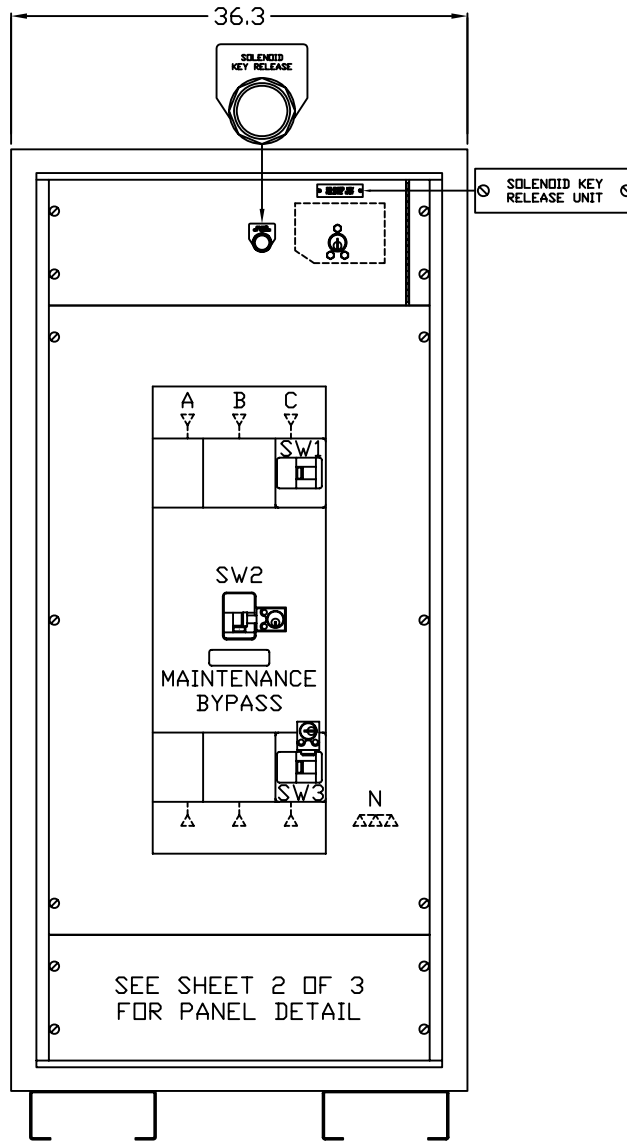


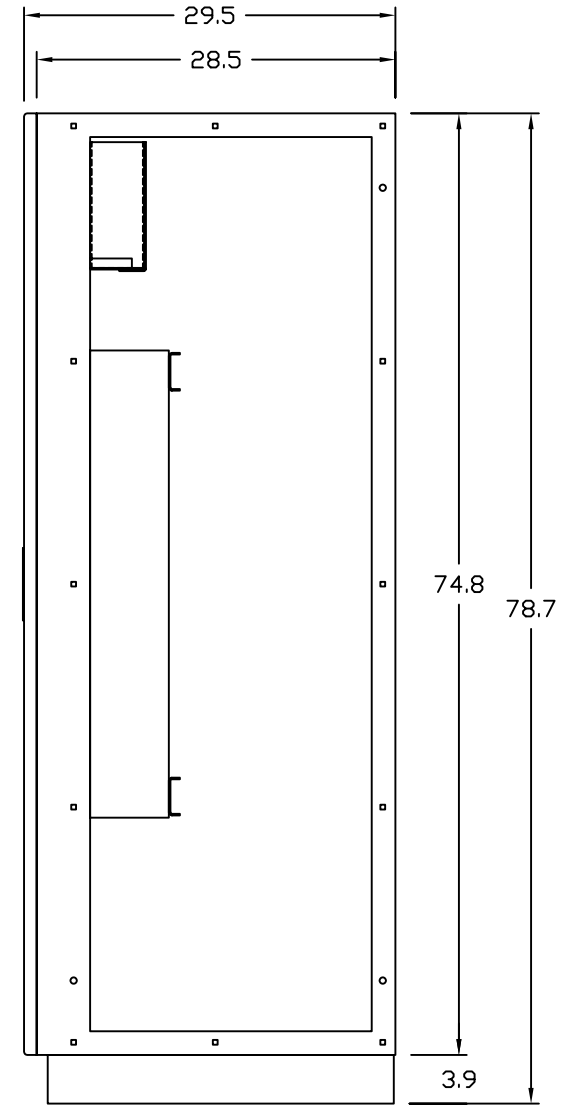
REMOVABLE LEFT  
SIDE COVER



FRONT VIEW  
DOOR SHOWN



FRONT VIEW  
DOOR REMOVED



RIGHT SIDE VIEW  
SIDE COVER REMOVED

This Document Contains Proprietary and Confidential Information.  
Duplication, reproduction or use of this document or its contents in any form other than as expressly permitted by Kinney Electrical Mfg. Co., is prohibited.

**MITSUBISHI ELECTRIC POWER PRODUCTS, INC.**  
VERNON HILLS, ILLINOIS

REVISIONS

PART NO. SEE TABLE

DESCRIPTION 3 BKR 9700 SERIES MBP PANEL W/ SKRU - 400 AMP MAX.

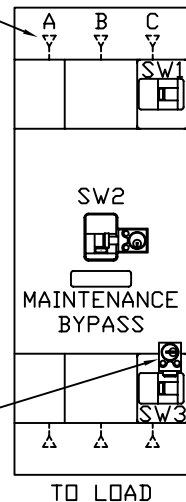
MEPPI APPROVED *[Signature]* KINNEY APPROVED *RFM* REVISION \*

DATE 5-24-2006 CAD FILE DRAWING NO. SHEET

DRAWN BY DB/RM MBF97000400A05 M0000279 1 OF 3

400 AMP M.L.D.  
W/ (1) #4-600MCM  
LUG PER PHASE  
(TYP)

UTILITY FEED



BYPASS  
INPUT  
ISOLATION

SW2  
MAINTENANCE  
BYPASS

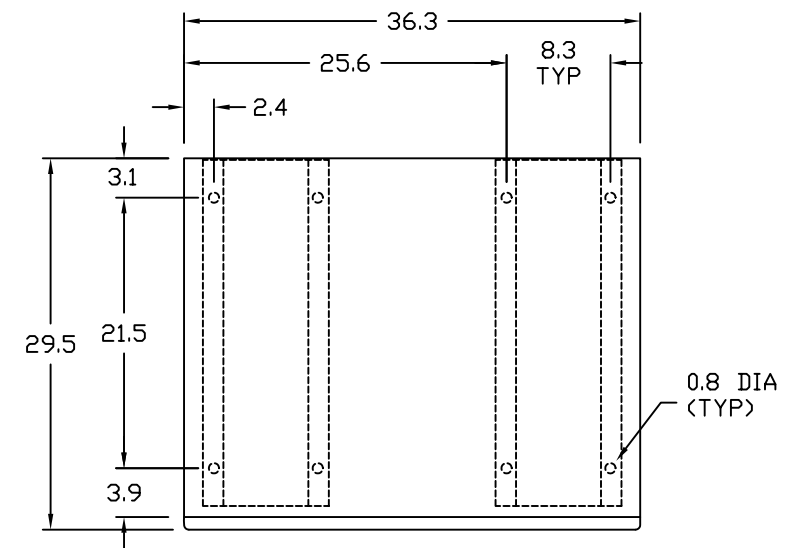
UPS  
OUTPUT  
ISOLATION

N

NEUTRAL BUS W/  
(3) #4-600MCM  
LUGS

KEY INTERLOCK (2)

PANEL DETAIL



PLAN VIEW  
ANCHOR DETAIL

This Document Contains Proprietary and Confidential Information.  
Duplication, reproduction or use of this document or its contents in any form other than as expressly permitted by Kinney Electrical Mfg. Co., is prohibited.

**MITSUBISHI ELECTRIC POWER PRODUCTS, INC.**  
VERNON HILLS, ILLINOIS

REVISIONS

PART NO.		SEE TABLE		
DESCRIPTION 3 BKR 9700 SERIES MBP PANEL W/ SKRU - 400 AMP MAX.				
MEPPI APPROVED	<i>Paul C. Jacobs</i>	KINNEY APPROVED	<i>RFM</i>	REVISION *
DATE	5-24-2006	CAD FILE	DRAWING NO.	SHEET
DRAWN BY	DB/RM	MBF97000400A05	M0000279	2 OF 3

