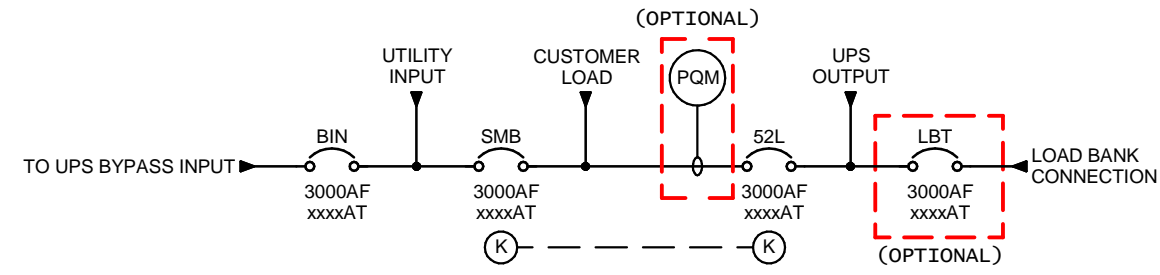
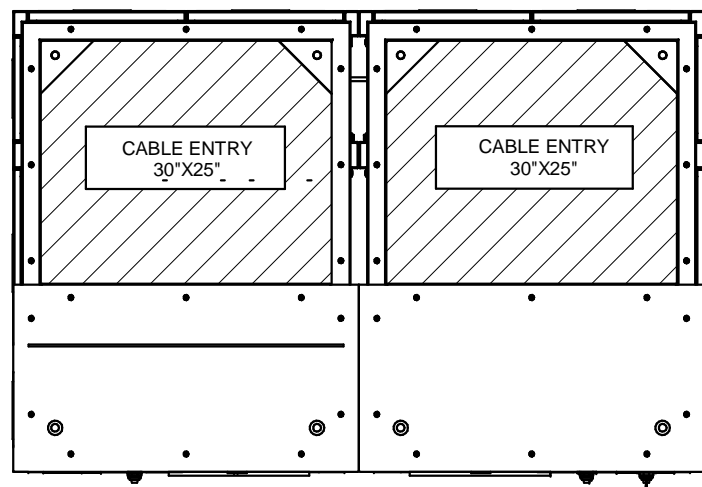


SINGLE LINE DIAGRAM

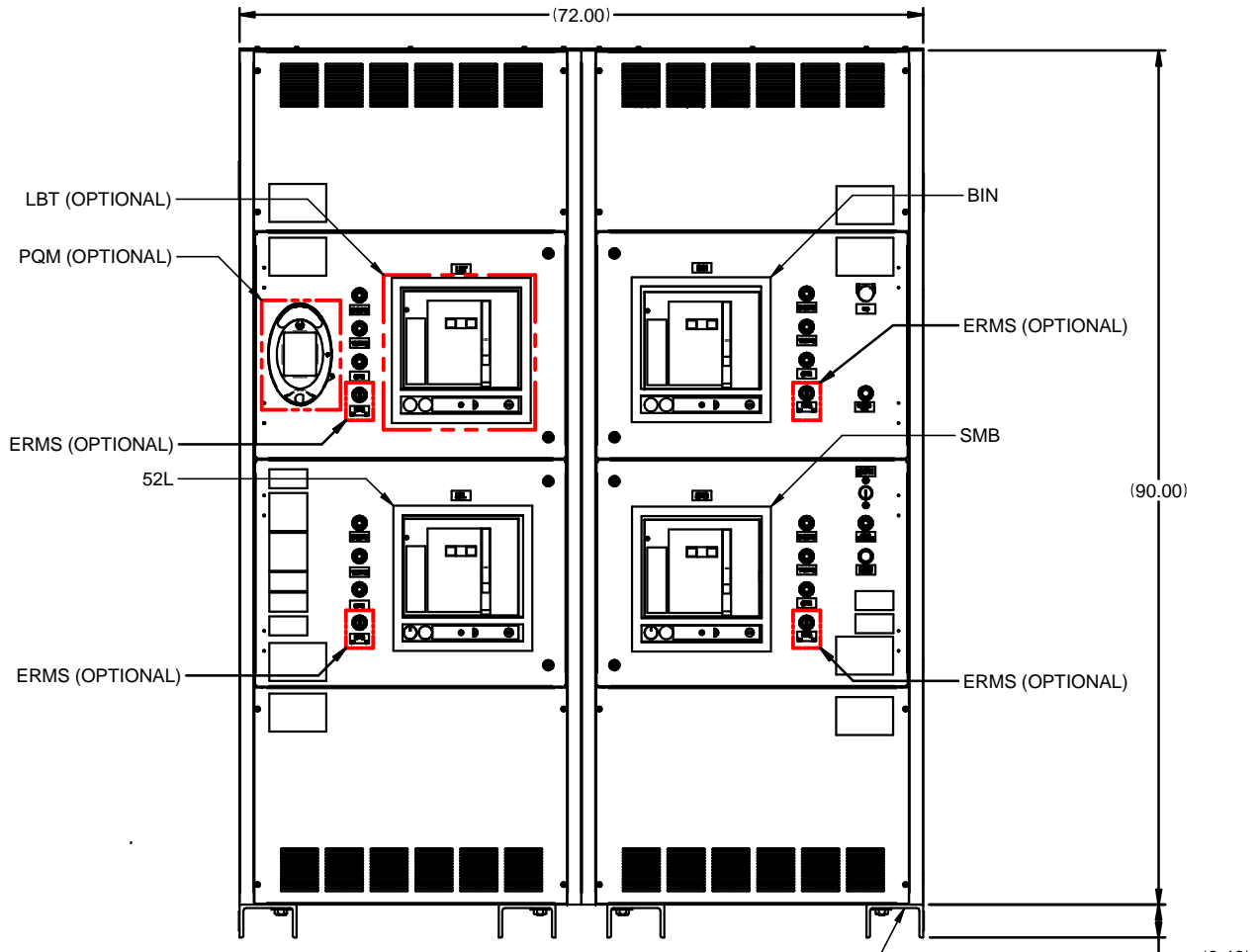


PART NUMBER: UD-100658-2.1-DELPE

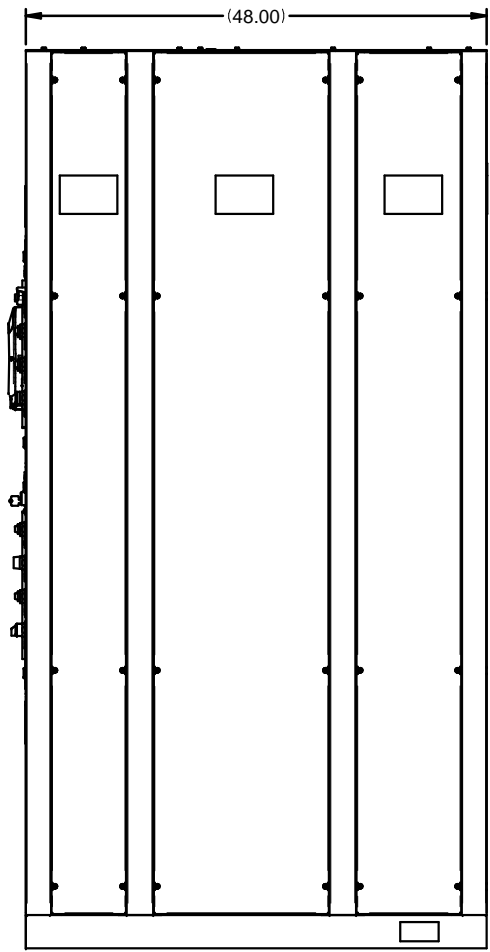
MVA OF UNIT	E - ERMS
2.1 MVA	N - NONE
1.7 MVA	P - PQM
1.5 MVA	N - NONE
1.4 MVA	L - LBT
1.05 MVA	N - NONE
	E - SKPM
	D - SQUARE D BREAKERS



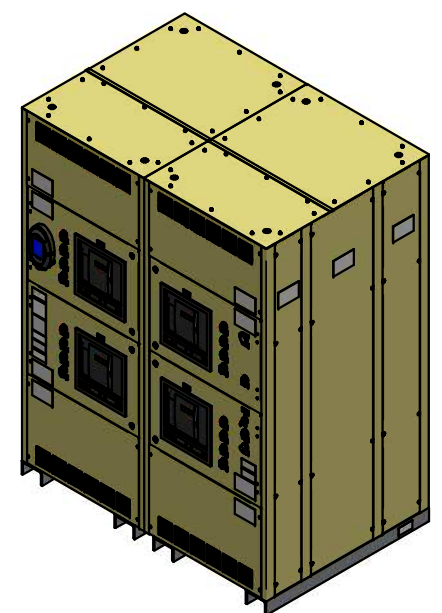
TOP  
TYPICAL CONDUIT ENTRY, TOP AND BOTTOM



FRONT  
BYPASS SHOWN WITH ALL OPTIONS INSTALLED



RIGHT SIDE



FRONT ISO VIEW

- NOTES:
1. BYPASS WEIGHT: 3500 LBS.
  2. CUSTOMER CONNECTIONS: (6) NEMA 2 HOLE PROVISIONS PER PHASE
  3. 9900CX BYPASS CABINET IS UL,CUL LISTED TO 100 KAIC
  4. TRIP SETTINGS:  
 1.05 MVA - 1600A  
 1.4/1.5 MVA - 2000A  
 1.7 MVA - 2500A  
 2.1 MVA - 3000A

REVISIONS	0. RELEASED FOR CONSTRUCTION I. MARTORELL 11/7/2017
1. UPDATED SINGLE LINE AND NOTES Z.ZAJAC 8/1/2018	
2. UPDATED PER ECN 891 Z.ZAJAC 10/29/2018	
3. UPDATED PER ECN 941 Z.ZAJAC 11/19/2018	

DIMENSIONS IN: IN [MM] (REF)	SCALE - NTS -	DRAFTER LMARTORELL	DATE 08/08/17	<p><b>MITSUBISHI ELECTRIC</b></p>	
<p>PROPRIETARY</p> <p>This document is the property of Mitsubishi Electric Power Products, Inc. and contains proprietary and confidential information which must not be duplicated, used or disclosed other than as expressly authorized by Mitsubishi Electric Power Products, Inc.</p>		APPROVED N.RIEMER	DATE 08/09/17		TITLE 9900CX BYPASS SALES DRAWING
CORE/REFERENCE DRAWING (IF APPLICABLE)		DWG. NO. UD-100658S		SHEET 1 OF 1	REV. 3