

MITSUBISHI 9900CX 1500kVA UPS DIRECT CABLE CONFIGURATION

CUSTOMER -

PROJECT NUMBER -

PROJECT LOCATION -

TABLE OF CONTENTS

SHEET NO.	TITLE
01	COVER SHEET
02	OUTLINE
03	BUS CONNECTIONS
04	SYSTEM CONFIGURATION
05	UPS SINGLE LINE
06	IO CONNECTIONS
07	
08	
09	
10	
11	
12	
13	
14	
15	

REVISIONS 0. INITIAL RELEASE PER ECN 606 Z.ZAJAC 9/25/17	1. UPDATED PER ECN 936 Z.ZAJAC 11/15/2018	2. UPDATED PER ECN 962 Z.ZAJAC 11/29/2018
-------------------------------------------------------------------	-------------------------------------------------	-------------------------------------------------

DIMENSIONS IN: IN [MM] (REF)	SCALE - NTS -	DRAFTER Z.ZAJAC	DATE 9/25/17	MITSUBISHI ELECTRIC
PROPRIETARY This document is the property of Mitsubishi Electric Power Products, Inc. and contains proprietary and confidential information which must not be duplicated, used or disclosed other than as expressly authorized by Mitsubishi Electric Power Products, Inc.				
APPROVED N.RIEMER	DATE 9/25/17	TITLE OUTLINE 1 9900CX 1500 KVA		DWG. NO. UD-100689
CORE/REFERENCE DRAWING (IF APPLICABLE)		SHEET 1 OF 6	REV. 2	

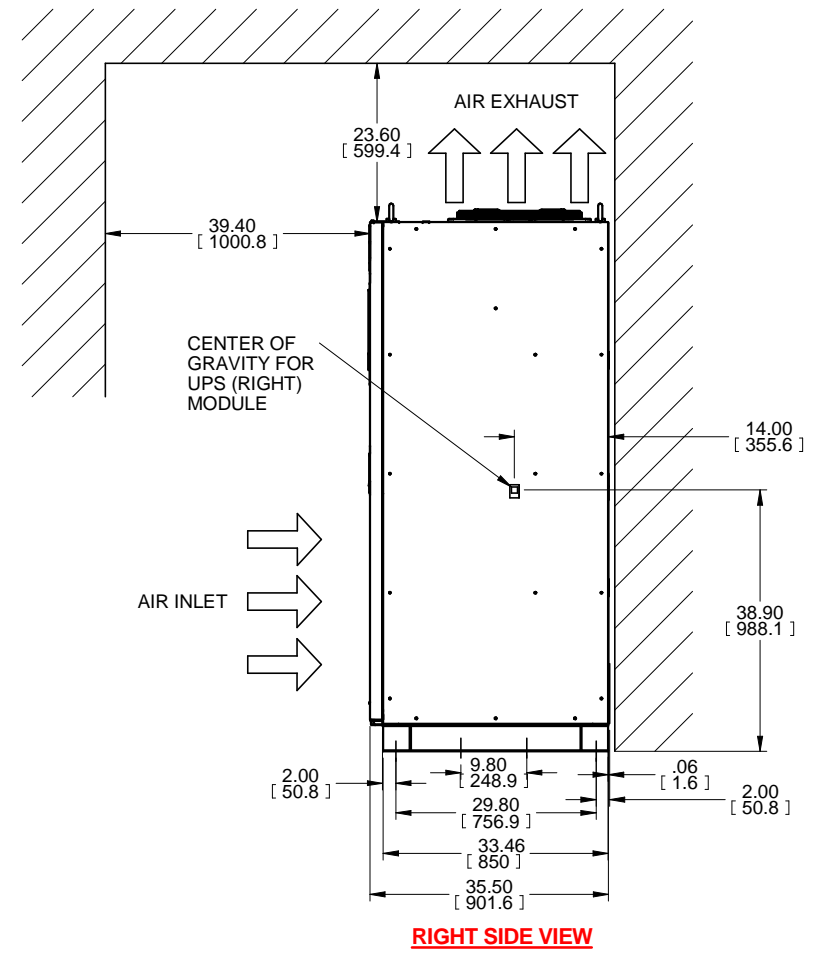
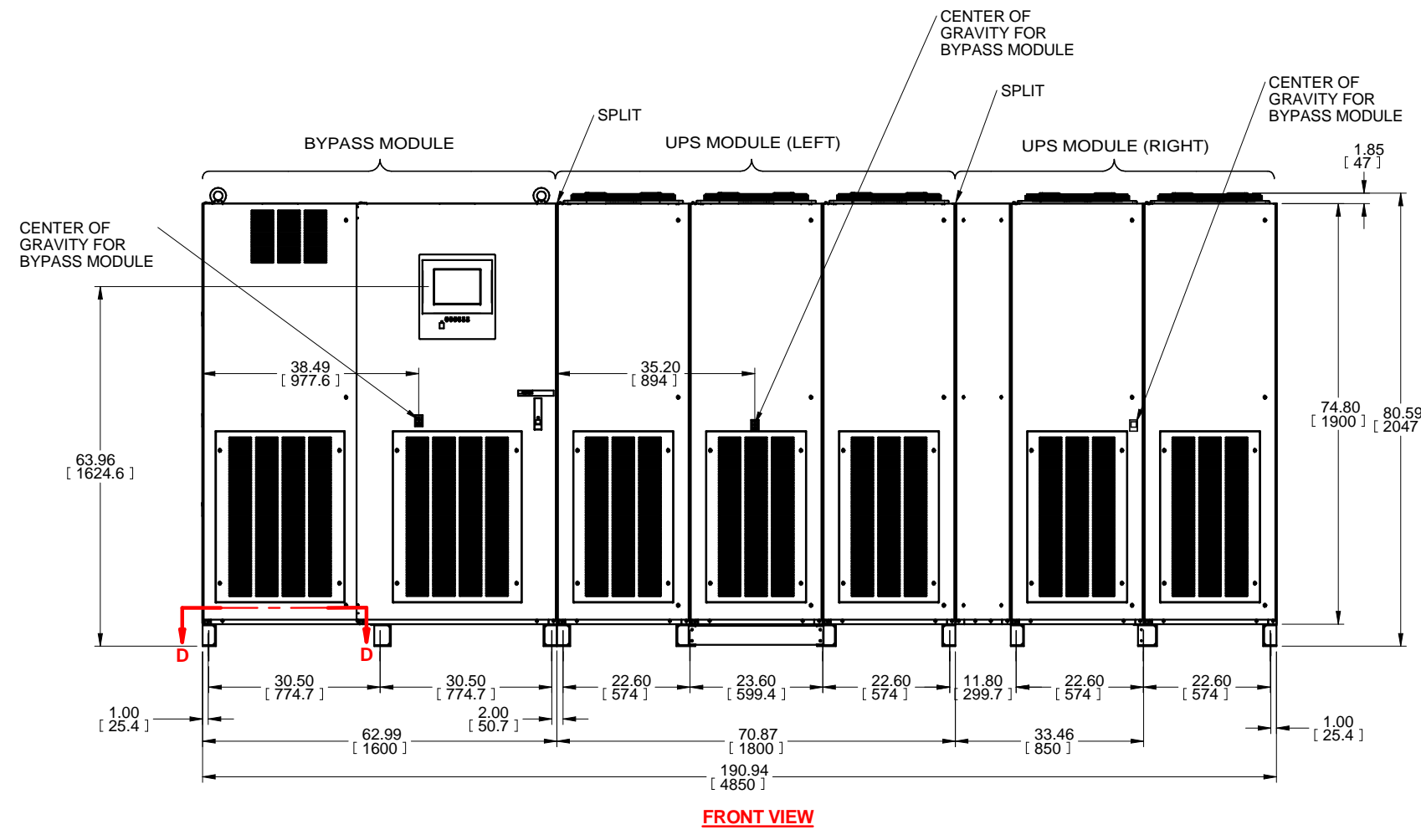
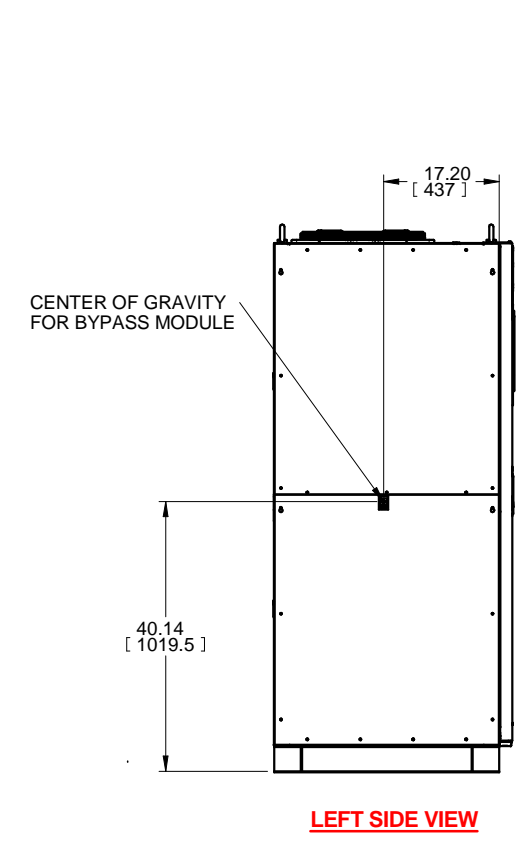
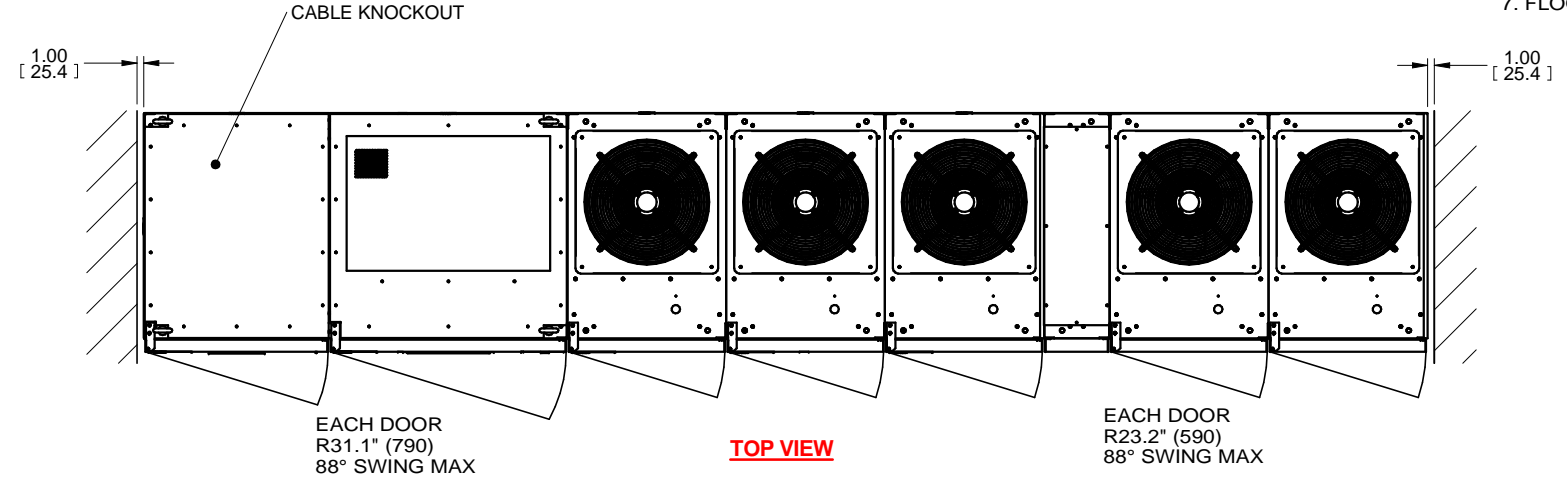
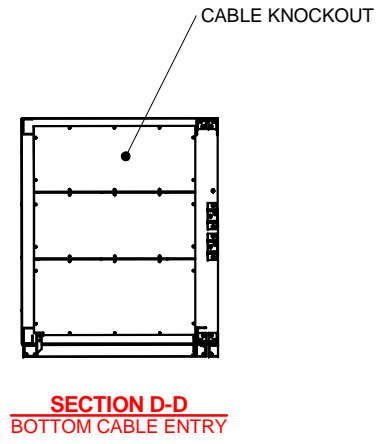
TYPE: UP9933C-B150DU-4
 RATING: 1500KVA-3P3W-480V-60Hz
 HEAT REJECTION: 170.6 kBTUs/hour (TYPICAL)

NOTES:

1. DIMENSIONS ARE SHOWN IN INCHES" [MILLIMETERS].
2. SIDE SPACE "1"[25] IS NOT REQUIRED WHEN SIDECARS ARE USED.
3. CABINET SHOULD BE MAINTAINED UPRIGHT WITHIN +/- 15° DURING HANDLING.
4. EACH BASE CHANNEL HAS 2 or 4 x 0.8"[20] DIAMETER HOLES TO FIX UPS ON THE GROUND.
5. LIFTING EYES OPTIONAL.
6. APPROXIMATE WEIGHT.

UPS MODULE (LEFT)	5,291LBS (2,400kg)
UPS MODULE (RIGHT)	3,638LBS (1,650kg)
BYPASS MODULE	2,425LBS (1,100kg)

7. FLOOR SHALL BE FLAT AND LEVEL TO 0.3" SURROUNDING UPS MOUNTING.

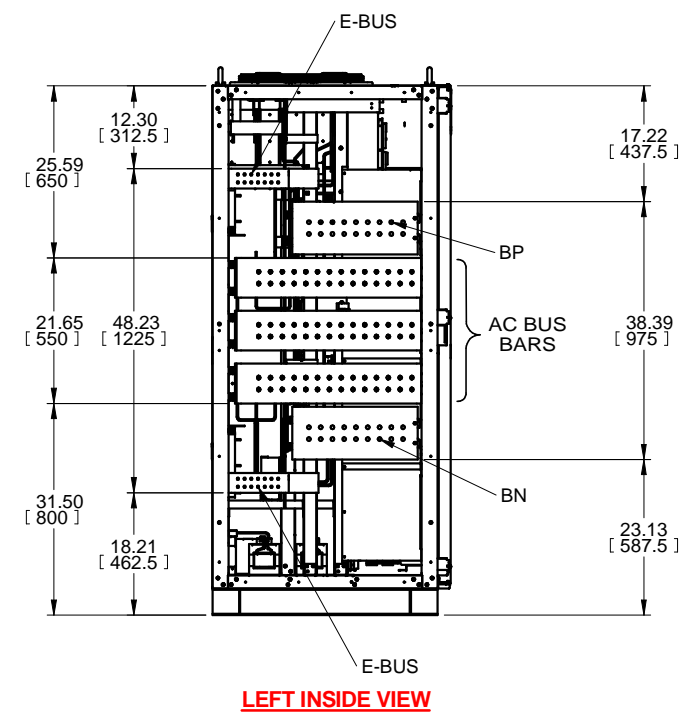
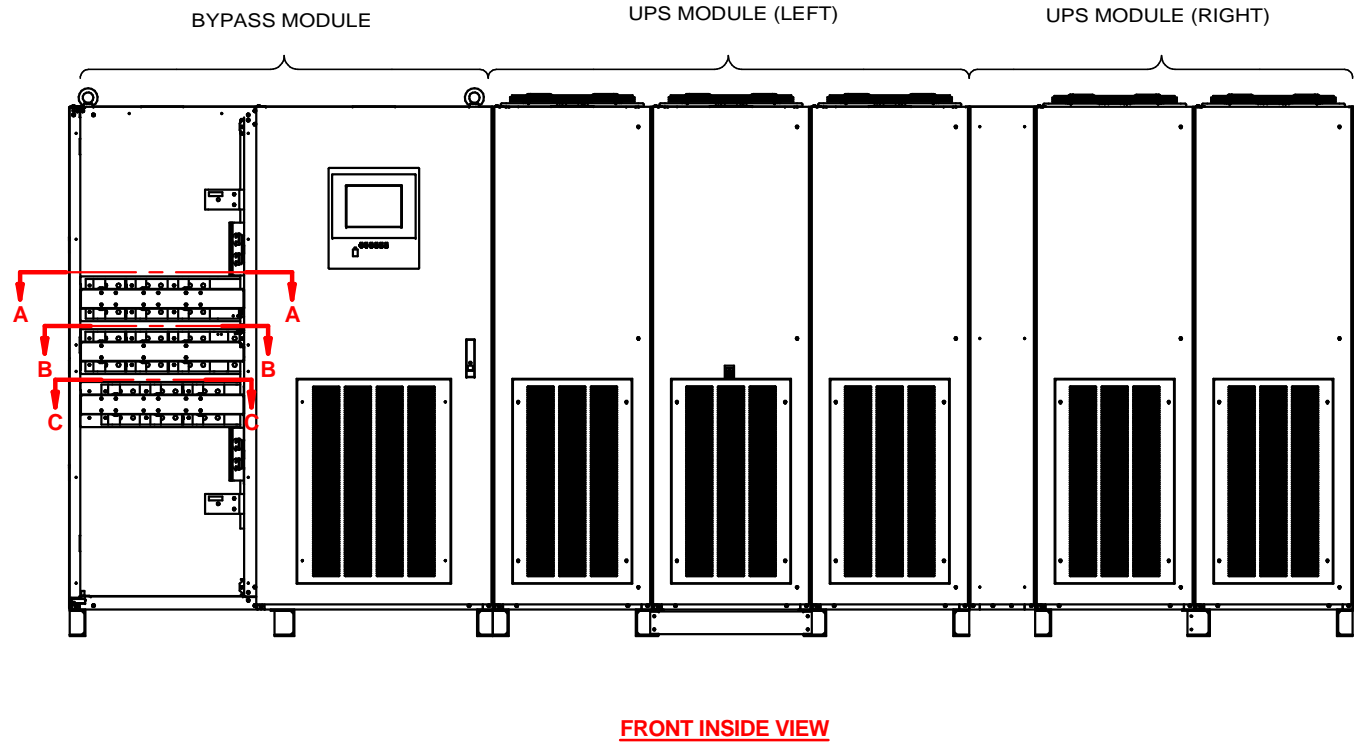
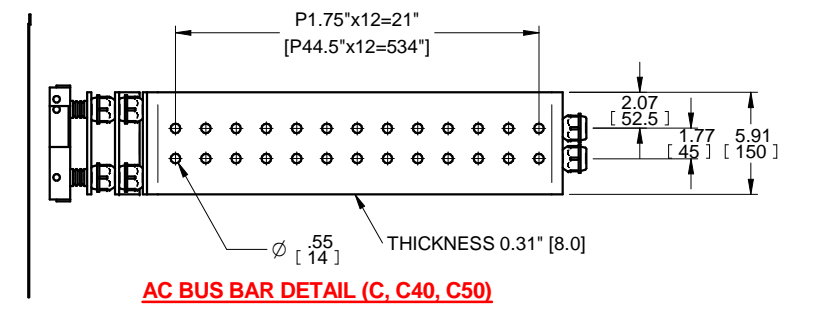
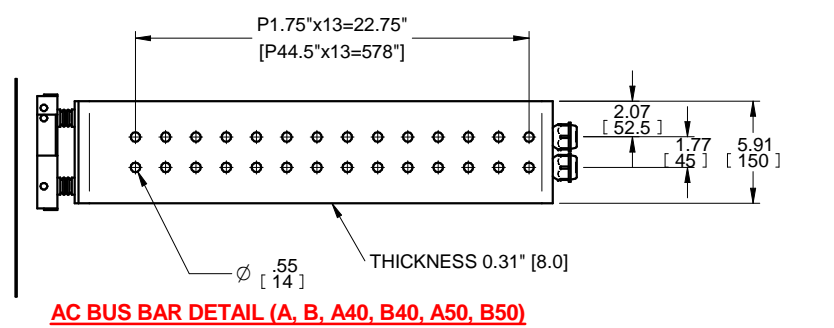
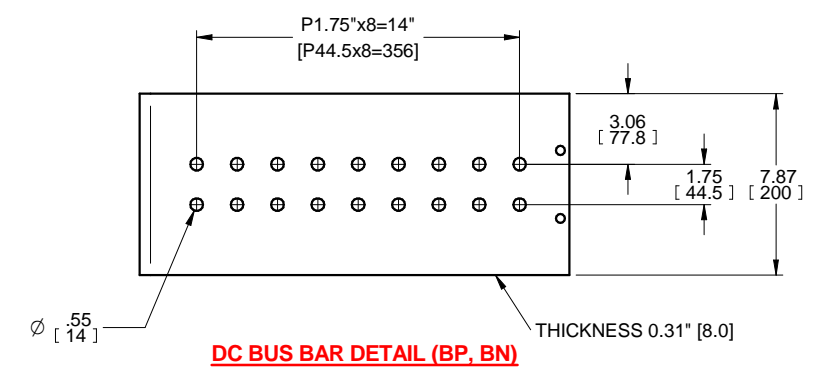
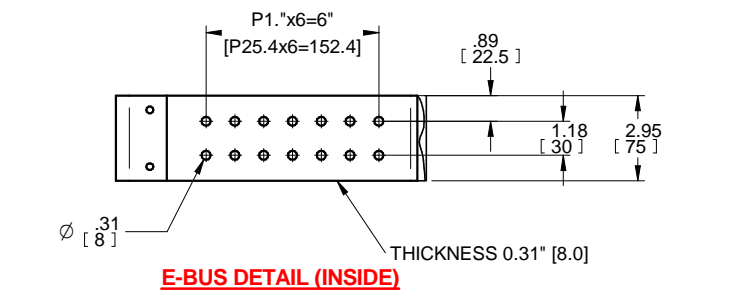
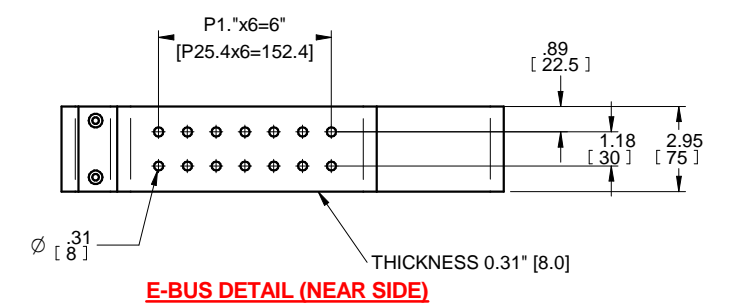
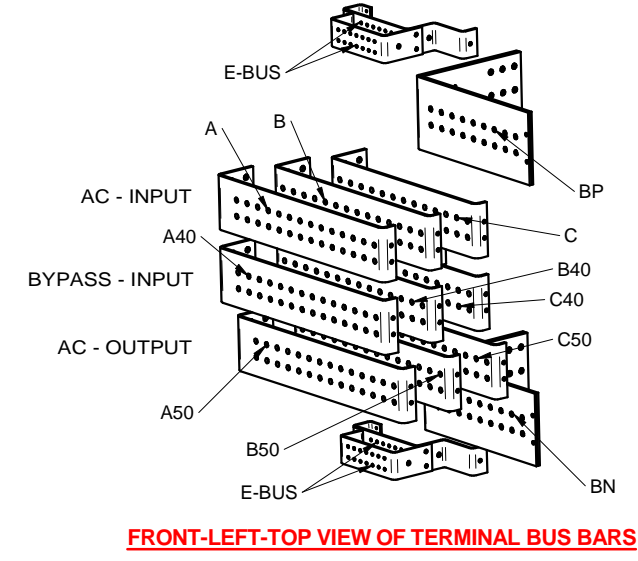
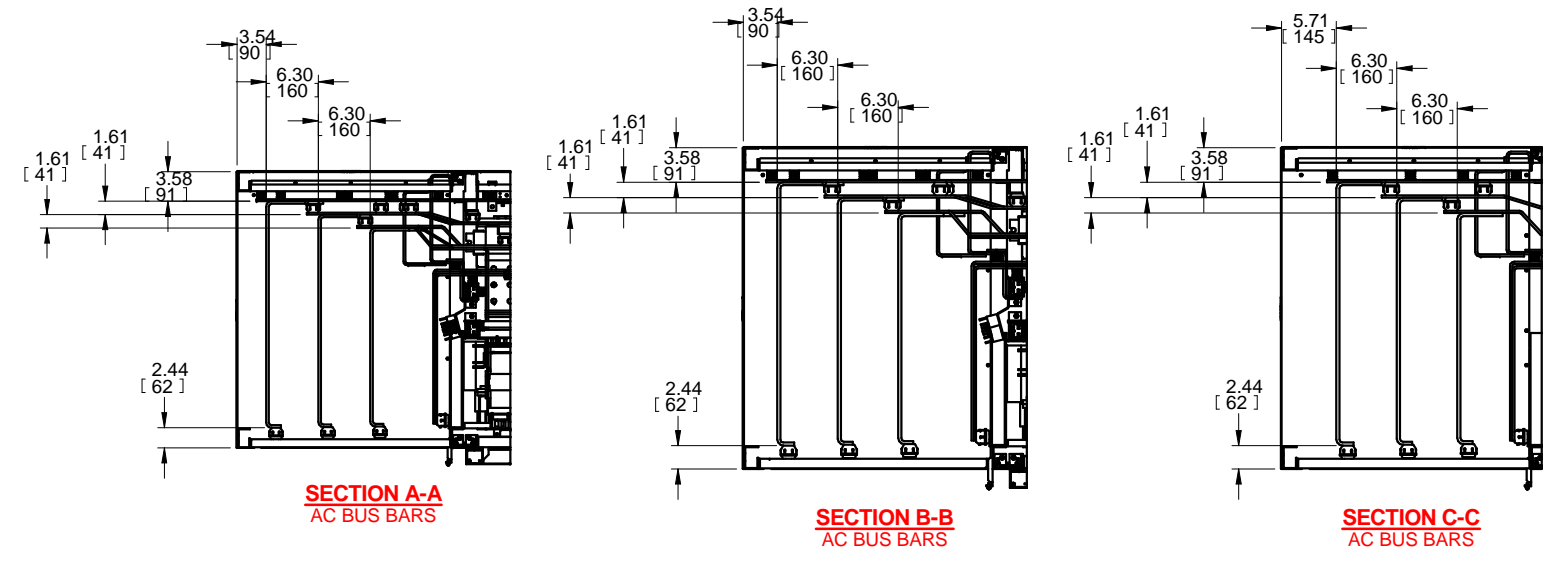


REVISIONS	DATE	BY
0. INITIAL RELEASE PER ECN 606	9/25/17	Z.ZAJAC
1. UPDATED PER ECN 936	11/15/2018	Z.ZAJAC
2. UPDATED PER ECN 962	11/29/2018	Z.ZAJAC

DIMENSIONS IN: IN [MM] (REF)	SCALE - NTS -	DRAFTER Z.ZAJAC	DATE 9/25/17	<p>MITSUBISHI ELECTRIC</p>
<p>PROPRIETARY This document is the property of Mitsubishi Electric Power Products, Inc. and contains proprietary and confidential information which must not be duplicated, used or disclosed other than as expressly authorized by Mitsubishi Electric Power Products, Inc.</p>		APPROVED N.RIEMER	DATE 9/25/17	
CORE/REFERENCE DRAWING (IF APPLICABLE)		TITLE OUTLINE 1 9900CX 1500 KVA		DWG. NO. UD-100689 SHEET 2 OF 6 REV. 2

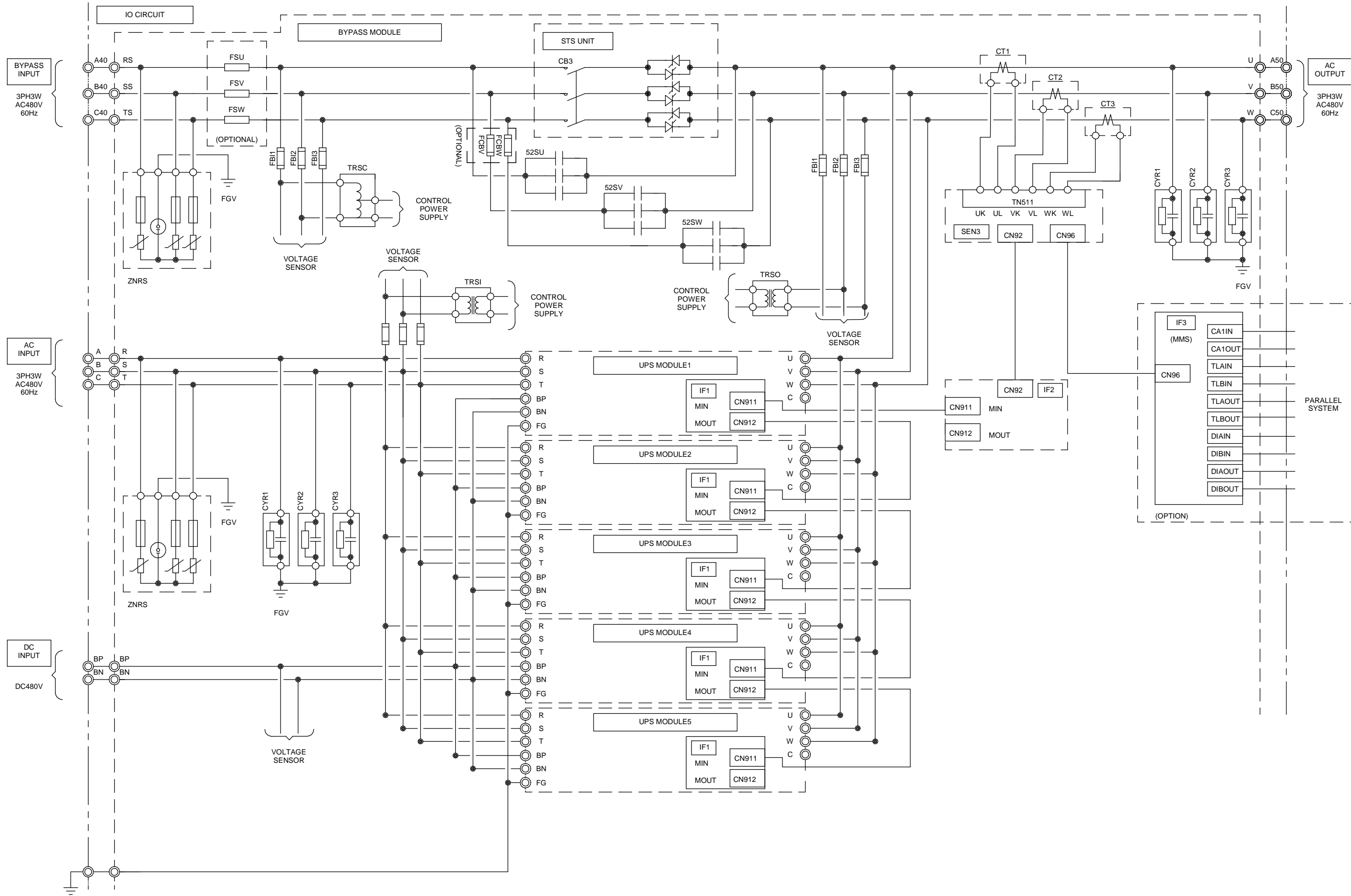
NOTES:

6. EXTERNAL WIRES OR CABLES SHALL BE PROVIDED BY CUSTOMERS FOR AC-INPUT, DC-INPUT, BYPASS-INPUT, AND AC-OUTPUT. (OUT OF PROVISION)



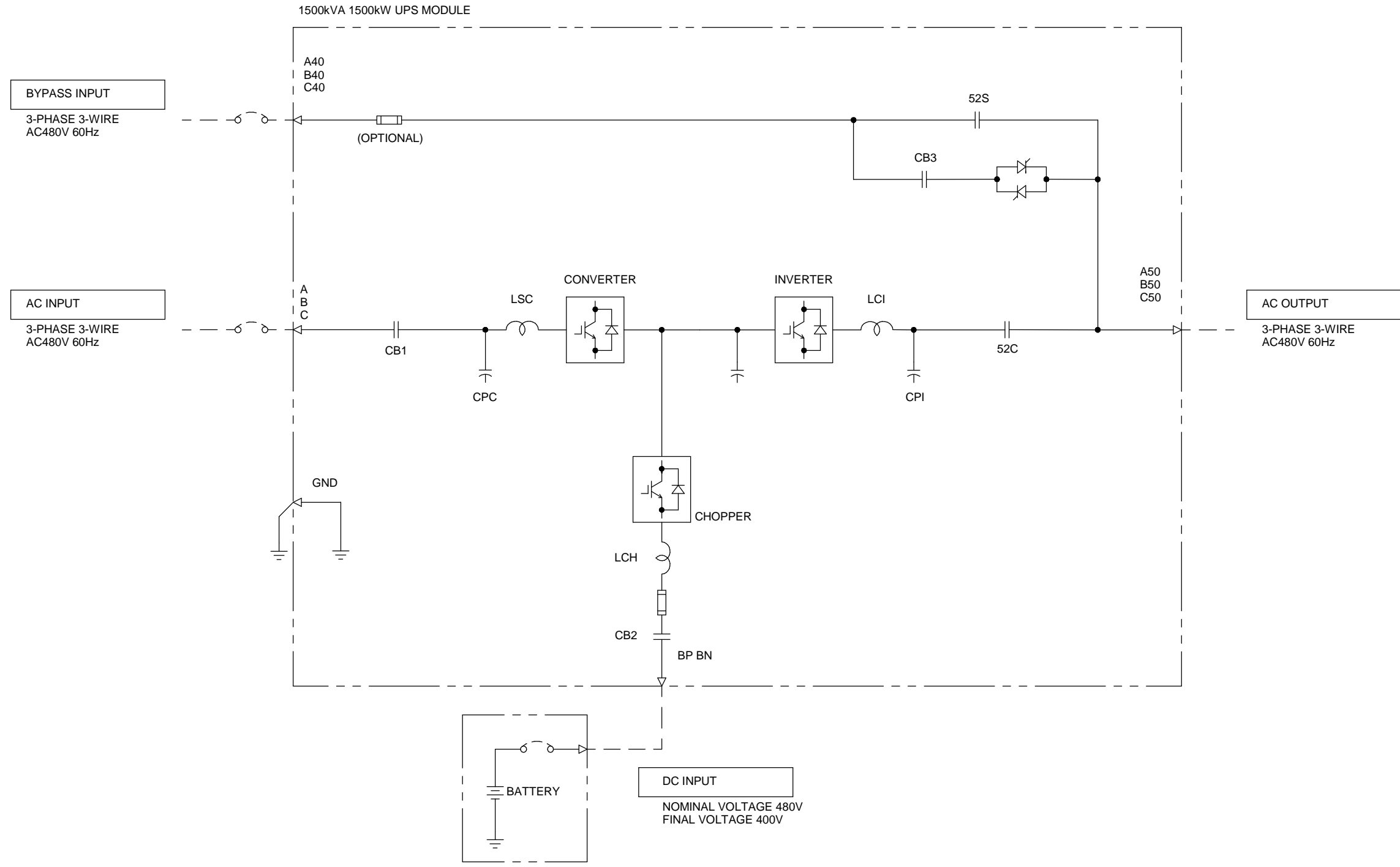
REVISIONS	0. INITIAL RELEASE PER ECN 606 Z.ZAJAC 9/25/17
1. UPDATED PER ECN 936 Z.ZAJAC 11/15/2018	
2. UPDATED PER ECN 962 Z.ZAJAC 11/29/2018	

DIMENSIONS IN: IN [MM] (REF)	SCALE - NTS -	DRAFTER Z.ZAJAC	DATE 9/25/17	MITSUBISHI ELECTRIC TITLE OUTLINE 1 9900CX 1500 KVA DWG. NO. UD-100689 SHEET 3 OF 6 REV. 2
PROPRIETARY This document is the property of Mitsubishi Electric Power Products, Inc. and contains proprietary and confidential information which must not be duplicated, used or disclosed other than as expressly authorized by Mitsubishi Electric Power Products, Inc.		APPROVED N.RIEMER	DATE 9/25/17	
CORE/REFERENCE DRAWING (IF APPLICABLE)				



REVISIONS	0. INITIAL RELEASE PER ECN 606 Z.ZAJAC 9/25/17
1. UPDATED PER ECN 936 Z.ZAJAC 11/15/2018	
2. UPDATED PER ECN 962 Z.ZAJAC 11/29/2018	

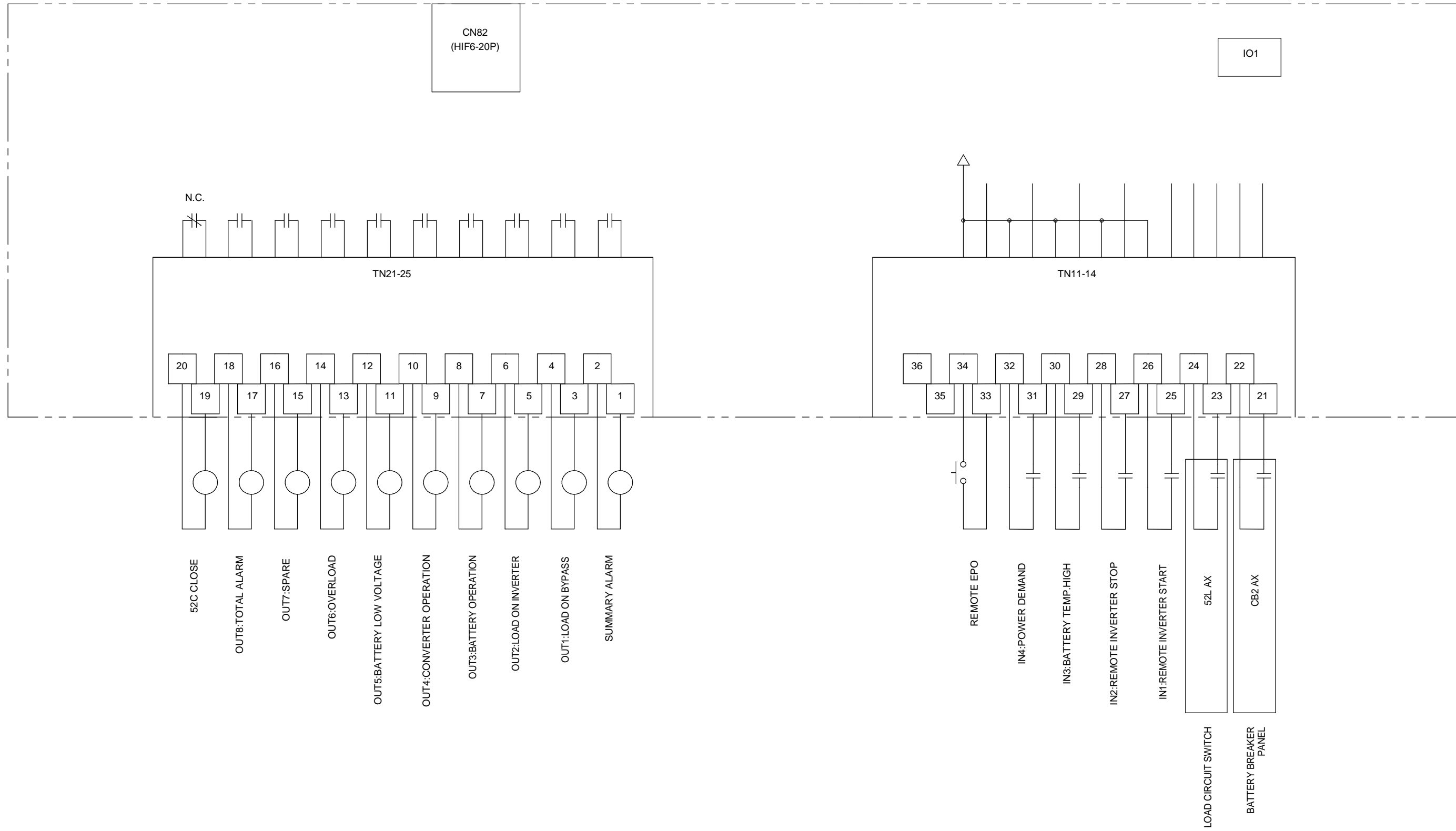
DIMENSIONS IN: IN [MM] (REF)	SCALE - NTS -	DRAFTER Z.ZAJAC	DATE 9/25/17	MITSUBISHI ELECTRIC
<small>PROPRIETARY</small> This document is the property of Mitsubishi Electric Power Products, Inc. and contains proprietary and confidential information which must not be duplicated, used or disclosed other than as expressly authorized by Mitsubishi Electric Power Products, Inc.		APPROVED N.RIEMER	DATE 9/25/17	
CORE/REFERENCE DRAWING (IF APPLICABLE)		TITLE OUTLINE 1 9900CX 1500 KVA		SHEET 4 OF 6 UD-100689
		DWG. NO. REV. 2		



REVISIONS
0. INITIAL RELEASE PER ECN 606 Z.ZAJAC 9/25/17
1. UPDATED PER ECN 936 Z.ZAJAC 11/15/2018
2. UPDATED PER ECN 962 Z.ZAJAC 11/29/2018

DIMENSIONS IN: IN [MM] (REF)	SCALE - NTS -	DRAFTER Z.ZAJAC	DATE 9/25/17	<p>MITSUBISHI ELECTRIC</p>
<p>PROPRIETARY This document is the property of Mitsubishi Electric Power Products, Inc. and contains proprietary and confidential information which must not be duplicated, used or disclosed other than as expressly authorized by Mitsubishi Electric Power Products, Inc.</p>		APPROVED N.RIEMER	DATE 9/25/17	
CORE/REFERENCE DRAWING (IF APPLICABLE)				TITLE OUTLINE 1 9900CX 1500 KVA
DWG. NO. UD-100689		SHEET 5 OF 6		REV. 2

(OPTION)
TO IO2:
EXTERNAL I/F BOARD



REVISIONS	0. INITIAL RELEASE PER ECN 606 Z.ZAJAC 9/25/17
	1. UPDATED PER ECN 936 Z.ZAJAC 11/15/2018
	2. UPDATED PER ECN 962 Z.ZAJAC 11/29/2018

DIMENSIONS IN: IN [MM] (REF)	SCALE - NTS -	DRAFTER Z.ZAJAC	DATE 9/25/17	MITSUBISHI ELECTRIC
<small>PROPRIETARY</small> <small>This document is the property of Mitsubishi Electric Power Products, Inc. and contains proprietary and confidential information which must not be duplicated, used or disclosed other than as expressly authorized by Mitsubishi Electric Power Products, Inc.</small>		APPROVED N.RIEMER	DATE 9/25/17	
CORE/REFERENCE DRAWING (IF APPLICABLE)				TITLE OUTLINE 1 9900CX 1500 KVA
DWG. NO. UD-100689		SHEET 6 OF 6		REV. 2