


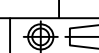
MITSUBISHI 9900B 500kVA UPS DIRECT CABLE CONFIGURATION

CUSTOMER -
PROJECT NUMBER -
PROJECT LOCATION -

TABLE OF CONTENTS

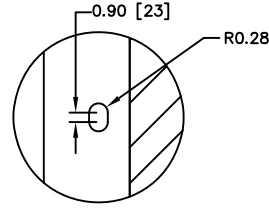
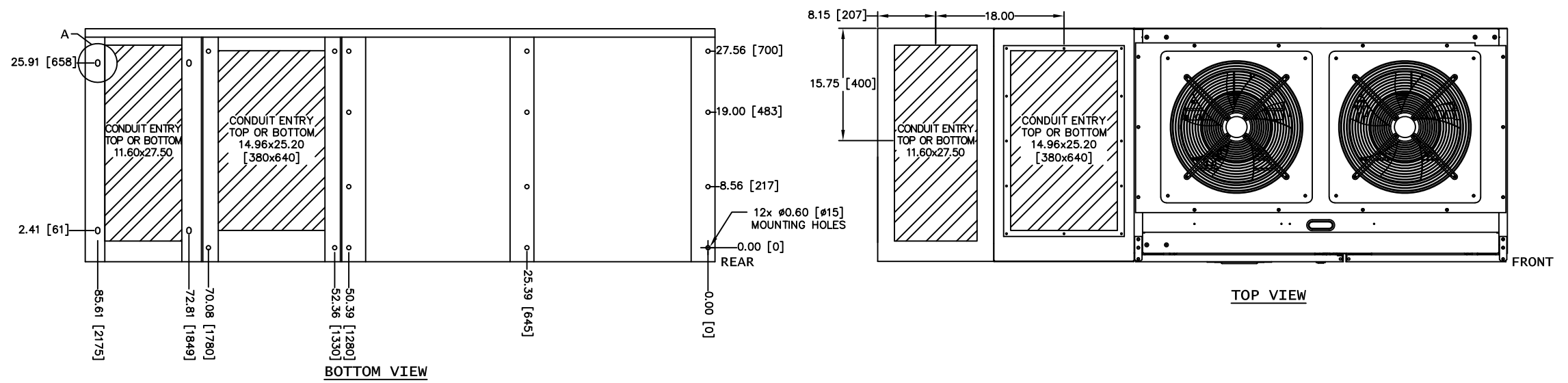
SHEET NO.	TITLE
01	COVER SHEET
02	UPS & SIDECAR DIRECT CABLE CONFIGURATION
03	500kVA UPS DETAIL
04	UPS ONE-LINE DIAGRAM
05	UPS ELECTRICAL SCHEMATIC
06	UPS CONTACT DIAGRAM
07	
08	
09	
10	
11	
12	
13	
14	
15	

REVISIONS
0 RELEASED FOR USE NRR 6/13/11
1 REVISED CONDUIT ENTRY RJM 7/13/12
2 REVISED BATTERY GROUND JUL 11/15/13
3 ADDED COG FOR UPS AND SIDECARS EGF 12/31/13
4 REVISED MOUNTING HOLES RAL 5/7/14
5 REVISED TEXT ON SHEET 6 OF 6 GDU 2/19/15
6. ADDED NOTE 7 TO SHEET 2. UPDATED PER ECN 1369 ZZAJAC 6/27/19

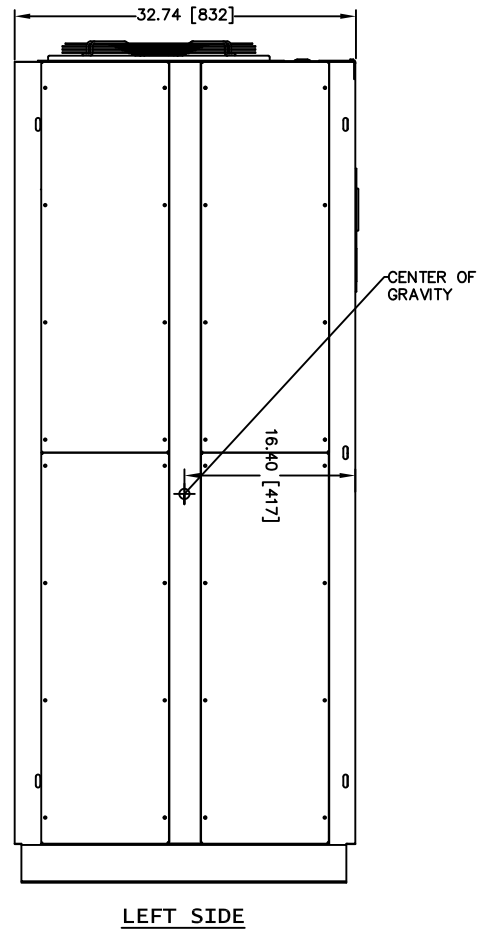
DIM. IN: INCHES	SCALE: NTS	DRAFTER: J.LIEBERT	DATE: 11/15/13	 MITSUBISHI ELECTRIC POWER PRODUCTS, INC. WARRENDALE, PA.
<small>PROPRIETARY THIS DOCUMENT IS PROPERTY OF MITSUBISHI ELECTRIC POWER PRODUCTS INC. AND CONTAINS PROPRIETARY AND CONFIDENTIAL INFORMATION WHICH MUST NOT BE DUPLICATED, USED OR DISCLOSED OTHER THAN AS EXPRESSLY AUTHORIZED BY MITSUBISHI ELECTRIC POWER PRODUCTS INC.</small>		CHECKED: N.RIEMER	DATE: 11/15/13	
		ENGINEER: N.RIEMER	DATE: 11/15/13	
REF. DWG. No.	APPROVED:	TITLE: 9900B 500kVA UPS STANDARD CONFIGURATION		
FILE LOCATION:	 DWG No. UD-100114		SHEET 1 OF 6 REV: 6	

NOTES

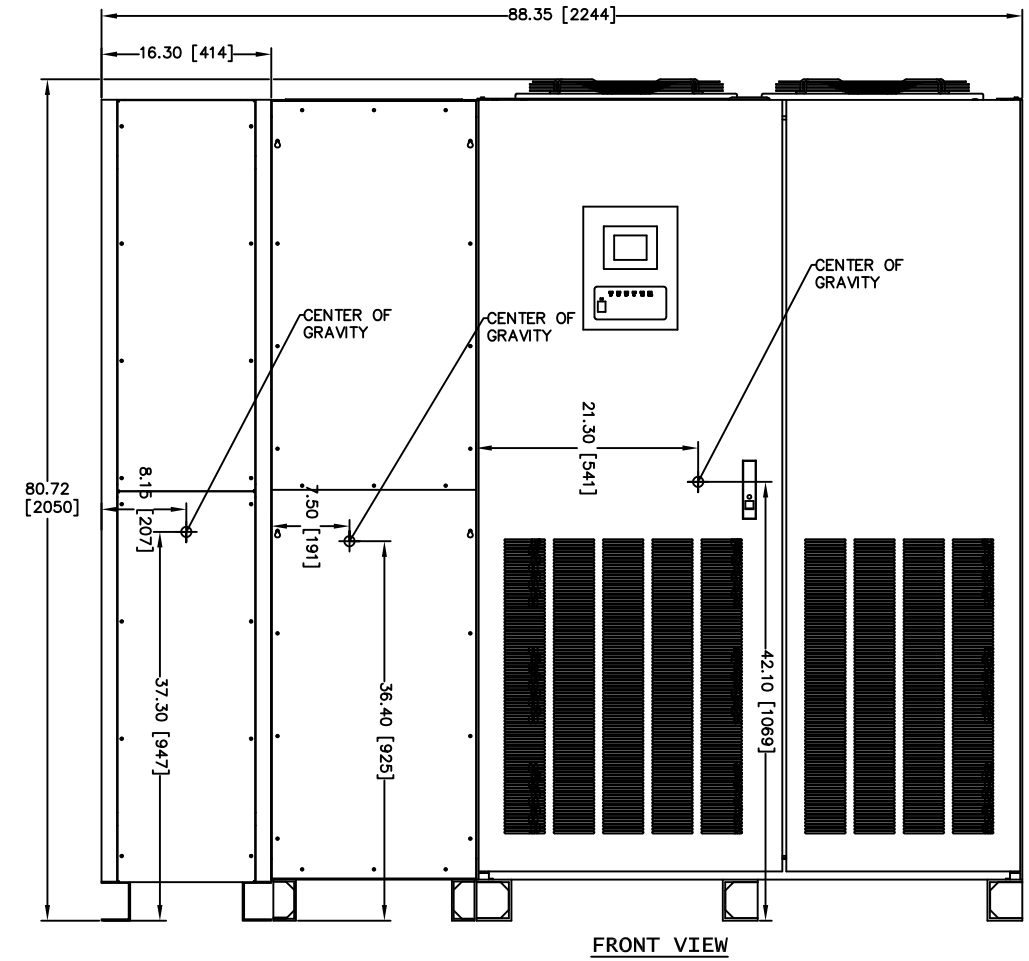
1. FIELD CABLES AND TERMINATIONS BY OTHERS. (AC INPUT, DC INPUT, BYPASS INPUT AND AC OUTPUT.)
2. PHASE ROTATION CLOCKWISE A, B, C.
3. 19.7" SIDECAR SHIPPED ATTACHED TO UPS.
4. 16.3" SIDECAR SHIPPED SEPARATE
5. CABINET MUST MAINTAIN ±15° UPRIGHT.
6. APPROXIMATE WEIGHT: 3,570LBS (1701KG)
7. HEAT REJECTION
 69.28 KBTU/HR@ 100%
 49.20 KBTU/HR@ 75%
 32.80 KBTU/HR@ 50%



DETAIL A
16.3" SIDECAR ANCHORING (TYP 4)



LEFT SIDE



FRONT VIEW

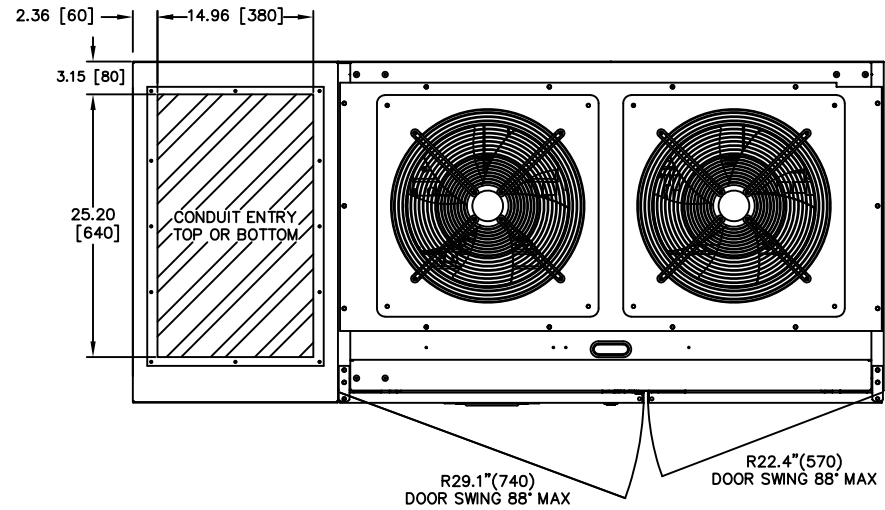
REVISIONS	DATE	DESCRIPTION
0	RELEASED FOR USE NRR 6/13/11	
1	REVISED CONDUIT ENTRY RJM 7/13/12	
2	REVISED BATTERY GROUND JUL 11/15/13	
3	ADDED COG FOR UPS AND SIDECARS EGF 12/31/13	
4	REVISED MOUNTING HOLES RAL 5/7/14	
5	REVISED TEXT ON SHEET 16 OF 6 GDU 2/19/15	
6	ADDED NOTE 7 TO SHEET 2; UPDATED PER EGN 1369 ZZAJAC 6/27/19	

DIM. IN: INCHES	SCALE: NTS	DRAFTER: T.DIEBLE	DATE: 06/03/11
<small>PROPRIETARY THIS DOCUMENT IS PROPERTY OF MITSUBISHI ELECTRIC POWER PRODUCTS INC. AND CONTAINS PROPRIETARY AND CONFIDENTIAL INFORMATION WHICH MUST NOT BE DUPLICATED, USED OR DISCLOSED OTHER THAN AS EXPRESSLY AUTHORIZED BY MITSUBISHI ELECTRIC POWER PRODUCTS INC.</small>		CHECKED: N.RIEMER	DATE: 06/03/11
REF. DWG. No.	ENGINEER: N.RIEMER	DATE: 06/03/11	TITLE: 9900B 500kVA UPS STANDARD CONFIGURATION
FILE LOCATION:	APPROVED:	DATE:	DWG No. UD-100114 SHEET 2 OF 6 REV: 6

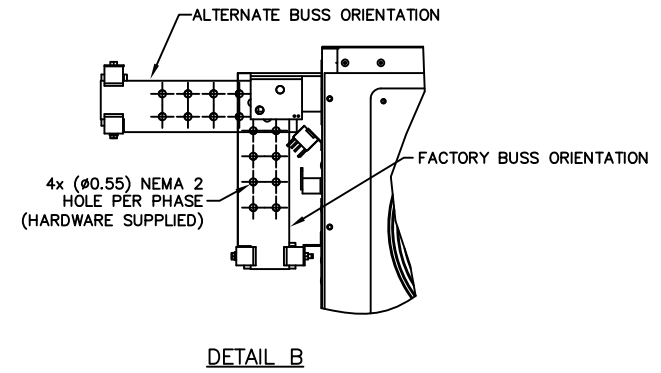


NOTES

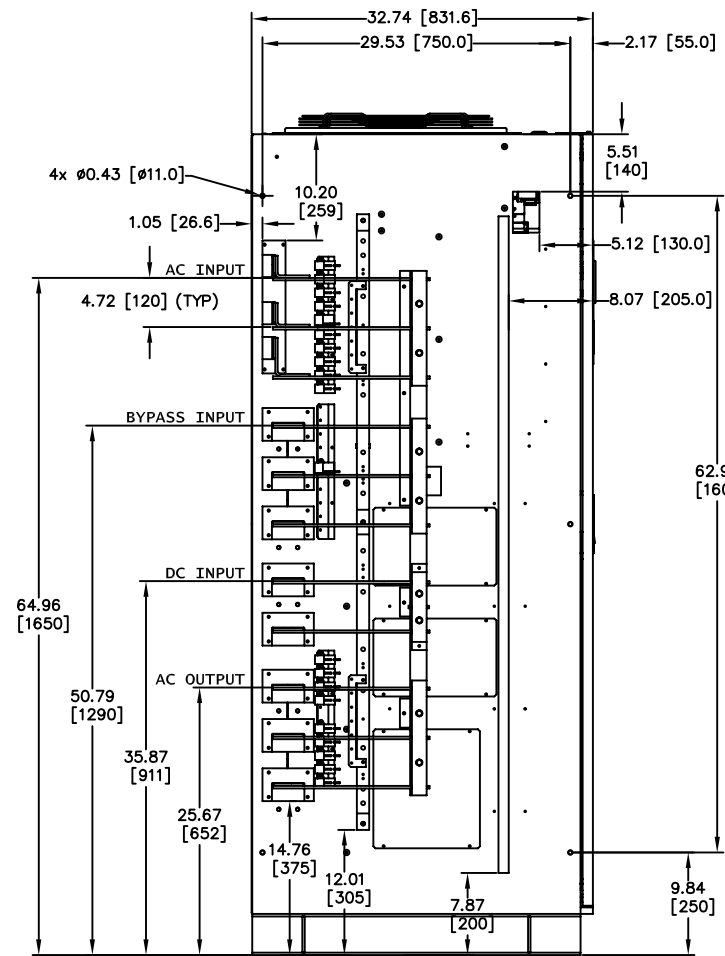
1. FIELD CABLES AND TERMINATIONS BY OTHERS.
(AC INPUT, DC INPUT, BYPASS INPUT AND AC OUTPUT.)
2. PHASE ROTATION CLOCKWISE A, B, C.
3. 19.7" SIDECAR SHIPPED ATTACHED TO UPS.
4. CABINET MUST MAINTAIN ±15° UPRIGHT.
5. APPROXIMATE WEIGHT: 3,300LBS (1497KG)
6. HEAT REJECTION
69.28 KBTU/HR@ 100%
49.20 KBTU/HR@ 75%
32.80 KBTU/HR@ 50%



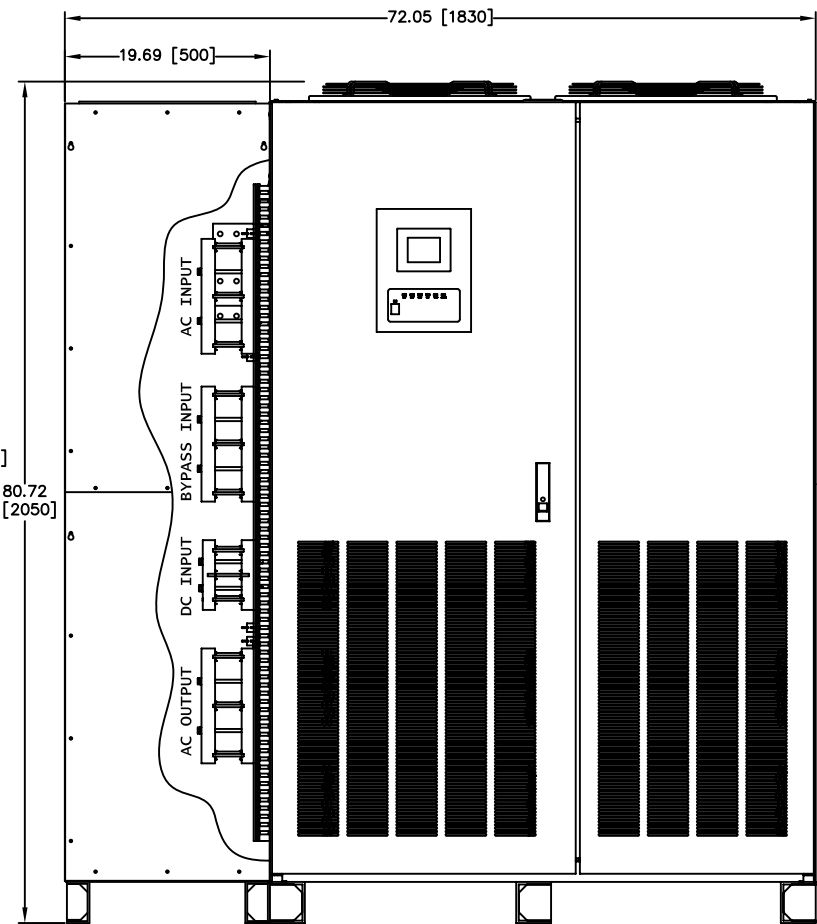
TOP VIEW



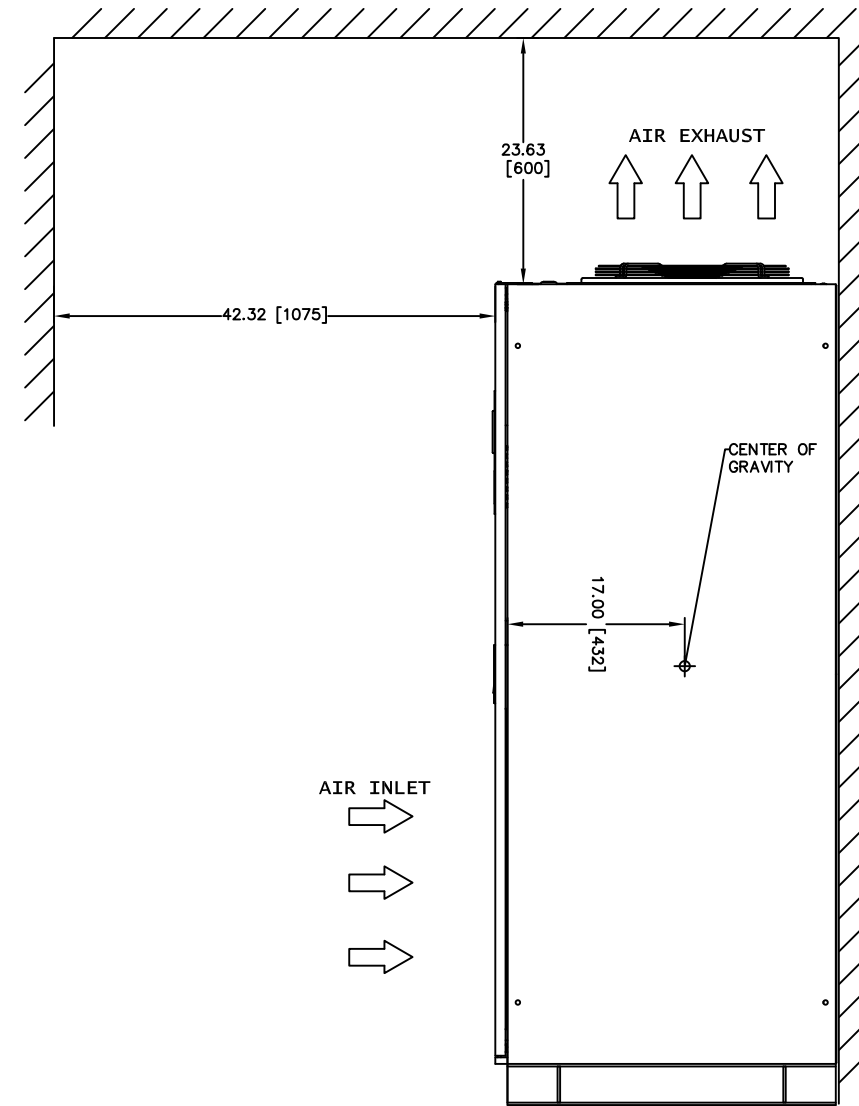
DETAIL B



LEFT SIDE
SIDECAR REMOVED FOR CLARITY



FRONT VIEW



RIGHT SIDE

REVISIONS	DATE	BY	DESCRIPTION
0	RELEASED FOR USE	NRR	6/13/11
1	REVISED CONDUIT ENTRY	RJM	7/13/12
2	REVISED BATTERY GROUND	JUL	11/15/13
3	ADDED COG FOR UPS AND SIDECARS	EGF	12/31/13
4	REVISED MOUNTING HOLES	RAL	5/7/14
5	REVISED TEXT ON SHEET 6 OF 6	GDJ	2/19/15
6	ADDED NOTE 7 TO SHEET 2	1369	UPDATED PER ECN
7	ADDED NOTE 2 TO SHEET 2	ZZAJAC	6/27/19

DIM. IN: INCHES	SCALE: NTS	DRAFTER: T.DIEBLE	DATE: 06/03/11
<small>PROPRIETARY THIS DOCUMENT IS PROPERTY OF MITSUBISHI ELECTRIC POWER PRODUCTS INC. AND CONTAINS PROPRIETARY AND CONFIDENTIAL INFORMATION WHICH MUST NOT BE REPRODUCED, USED OR DISCLOSED OTHER THAN AS EXPRESSLY AUTHORIZED BY MITSUBISHI ELECTRIC POWER PRODUCTS INC.</small>		CHECKED: N.RIEMER	DATE: 06/03/11
REF. DWG. No.	APPROVED: N.RIEMER	ENGINEER: N.RIEMER	DATE: 06/03/11
FILE LOCATION:	DWG No. UD-100114 SHEET 3 OF 6 REV: 6		

MITSUBISHI ELECTRIC POWER PRODUCTS, INC.
WARRENDALE, PA.

9900B 500kVA UPS STANDARD CONFIGURATION

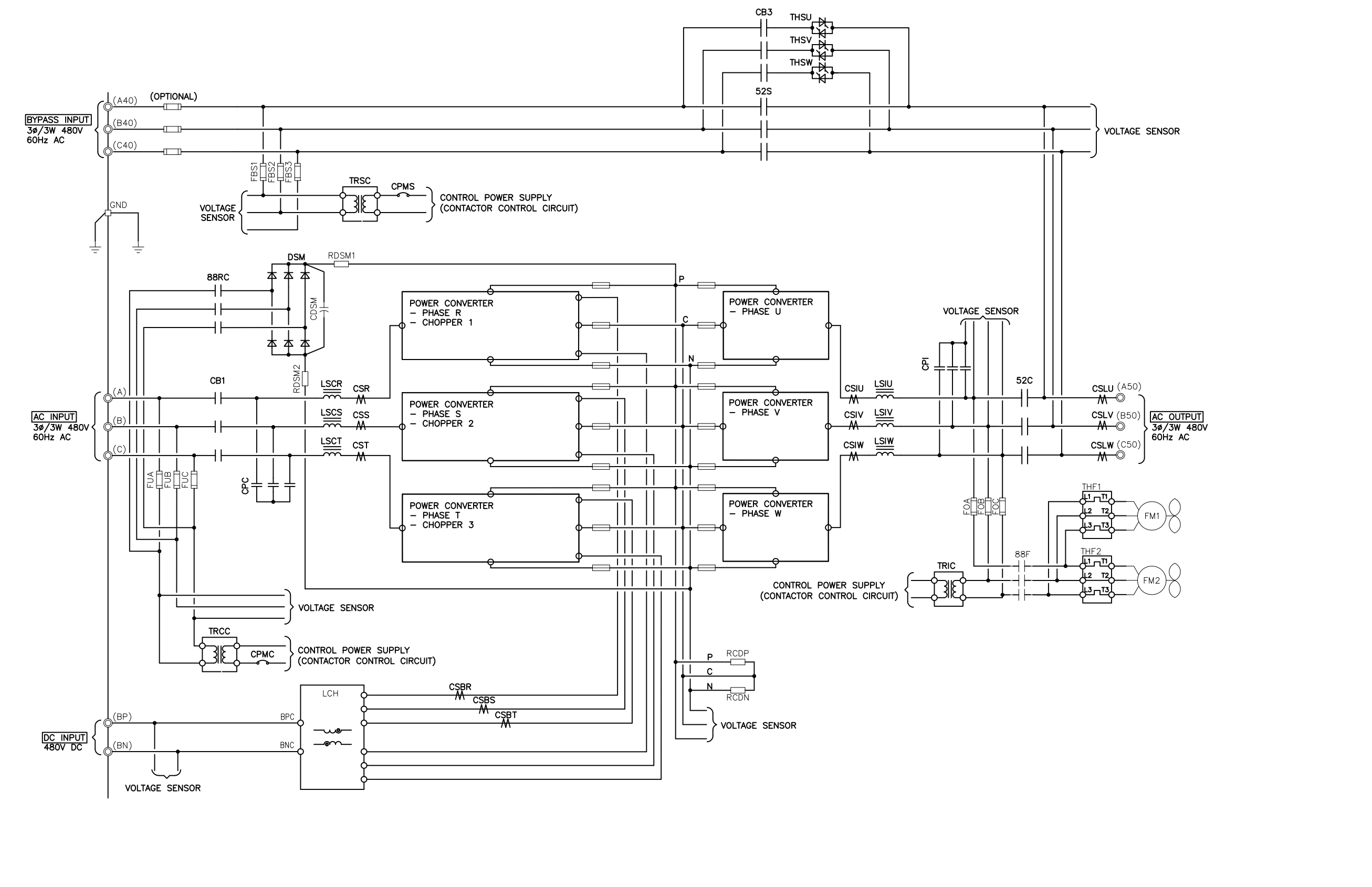
4

3

2

1

F E D C B A



4

3

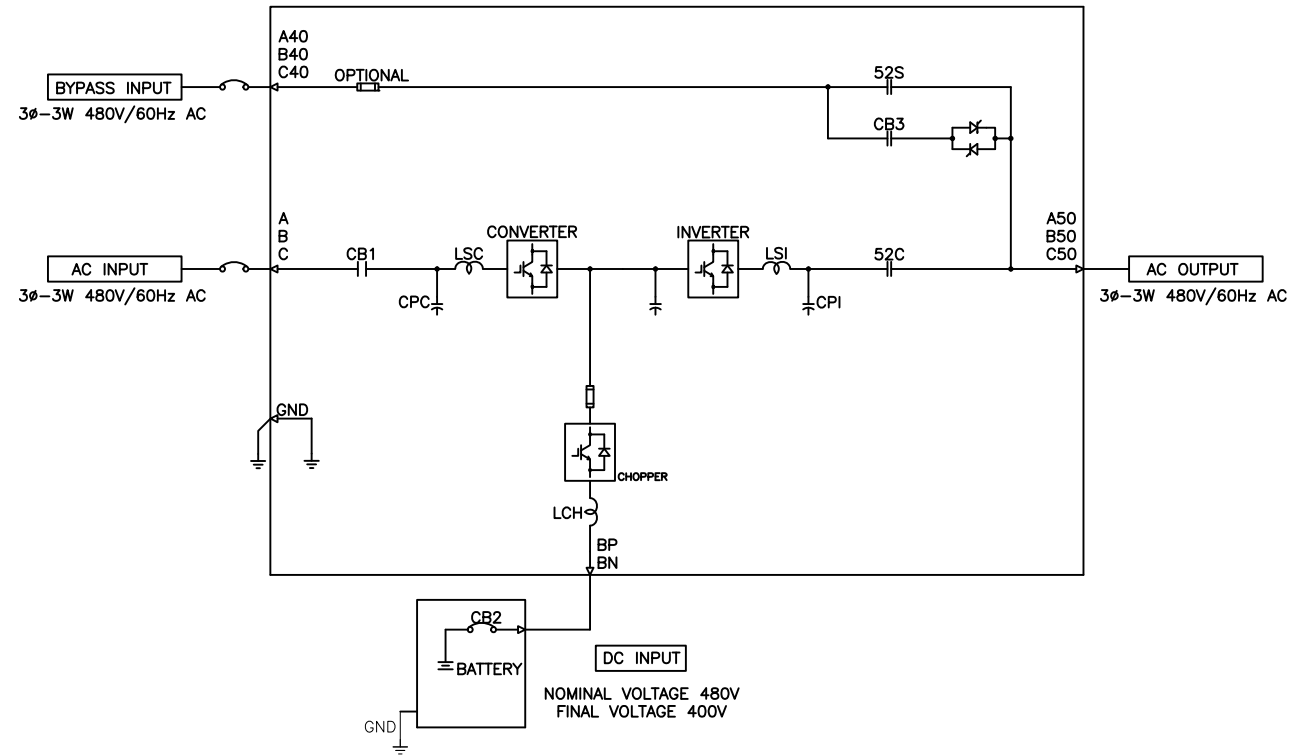
2

1

REVISIONS	DATE	BY	DESCRIPTION
0	RELEASED FOR USE	NRR	6/13/11
1	REVISED CONDUIT ENTRY	RJM	7/13/12
2	REVISED BATTERY GROUND	RAL	5/7/14
3	ADDED COG FOR UPS AND SIDECARS	EGF	12/31/13
4	REVISED MOUNTING HOLES	RAL	5/7/14
5	REVISED TEXT ON SHEET 6 OF 6 GDU		2/19/15
6	ADDED NOTE 7 TO SHEET 2; UPDATED PER EGN		1/30/19
7	UPDATED PER EGN	Z.ZAJAC	6/27/19

F E D C B A

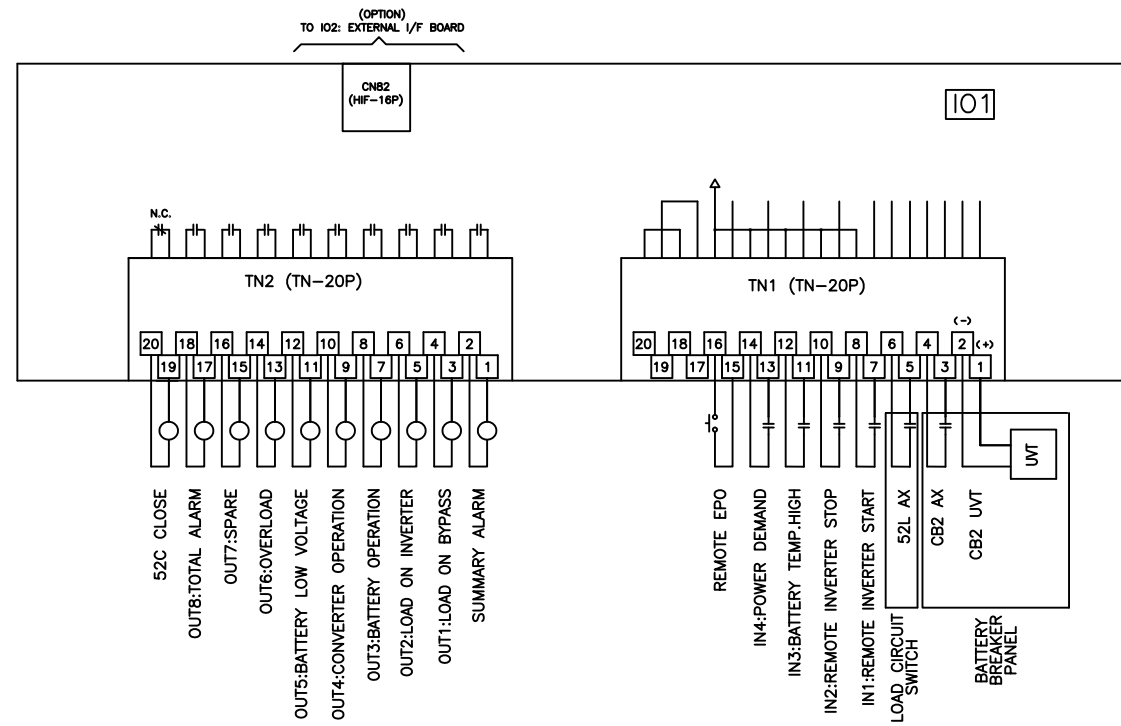
DIM. IN: INCHES	SCALE: NTS	DRAFTER: T.DIEBLE	DATE: 06/03/11	<p>MITSUBISHI ELECTRIC POWER PRODUCTS, INC. WARRENDALE, PA.</p> <p>TITLE: 9900B 500kVA UPS STANDARD CONFIGURATION</p>
<small>PROPRIETARY INFORMATION</small> <small>THIS DOCUMENT IS PROPERTY OF MITSUBISHI ELECTRIC POWER PRODUCTS INC. AND CONTAINS PROPRIETARY AND CONFIDENTIAL INFORMATION WHICH MUST NOT BE DUPLICATED, USED OR DISCLOSED OTHER THAN AS EXPRESSLY AUTHORIZED BY MITSUBISHI ELECTRIC POWER PRODUCTS INC.</small>		CHECKED: N.RIEMER	DATE: 06/03/11	
REF. DWG. No.		ENGINEER: N.RIEMER	DATE: 06/03/11	
FILE LOCATION:		APPROVED:	DATE:	



500kVA 500kW UPS MODULE

REVISIONS
0 RELEASED FOR USE NRR 6/13/11
1 REVISED CONDUIT ENTRY RJM 7/13/12
2 REVISED BATTERY GROUND JUL 11/15/13
3 ADDED COG FOR UPS AND SIDECARS EGF 12/31/13
4 REVISED MOUNTING HOLES RAL 5/7/14
5 REVISED TEXT ON SHEET 6 OF 6 GDU 2/19/15
6. ADDED NOTE 7 TO SHEET 2; UPDATED PER EGN 1389 Z.ZAJAC 6/27/19

DIM. IN: INCHES	SCALE: NTS	DRAFTER: T.DIEBLE	DATE: 06/03/11	<p>MITSUBISHI ELECTRIC POWER PRODUCTS, INC. WARRENDALE, PA.</p>
<small>PROPRIETARY THIS DOCUMENT IS PROPERTY OF MITSUBISHI ELECTRIC POWER PRODUCTS INC. AND CONTAINS PROPRIETARY AND CONFIDENTIAL INFORMATION WHICH MUST NOT BE DUPLICATED, USED OR DISCLOSED OTHER THAN AS EXPRESSLY AUTHORIZED BY MITSUBISHI ELECTRIC POWER PRODUCTS INC.</small>		CHECKED: N.RIEMER	DATE: 06/03/11	
REF. DWG. No.	APPROVED:	ENGINEER: N.RIEMER	DATE: 06/03/11	
FILE LOCATION:			DATE:	
			DWG. No. UD-100114	<p>TITLE: 9900B 500kVA UPS STANDARD CONFIGURATION</p> <p>SHEET 5 OF 6</p>
				REV: 6



UPS CONNECTION DIAGRAM

REVISIONS
0 RELEASED FOR USE NR 6/13/11
1 REVISED CONDUIT ENTRY RJM 7/13/12
2 REVISED BATTERY GROUND JUL 11/15/13
3 ADDED COG FOR UPS AND SIDECARS EGF 12/31/13
4 REVISED MOUNTING HOLES RAL 5/7/14
5 REVISED TEXT ON SHEET 6 OF 6 GDJ 2/19/15
6. ADDED NOTE 7 TO SHEET 2: UPDATED PER EGN 1369 ZZAJAC 6/27/19

DIM. IN: INCHES	SCALE: NTS	DRAFTER: T.DIEBLE	DATE: 06/03/11
<small>PROPRIETARY THIS DOCUMENT IS PROPERTY OF MITSUBISHI ELECTRIC POWER PRODUCTS INC. AND CONTAINS PROPRIETARY AND CONFIDENTIAL INFORMATION WHICH MUST NOT BE DUPLICATED, USED OR DISCLOSED OTHER THAN AS EXPRESSLY AUTHORIZED BY MITSUBISHI ELECTRIC POWER PRODUCTS INC.</small>		CHECKED: N.RIEMER	DATE: 06/03/11
		ENGINEER: N.RIEMER	DATE: 06/03/11
REF. DWG. No.	APPROVED:	DATE:	
FILE LOCATION:			
MITSUBISHI ELECTRIC POWER PRODUCTS, INC. WARRENDALE, PA.			TITLE: 9900B 500kVA UPS STANDARD CONFIGURATION
DWG No. UD-100114			SHEET 6 OF 6 REV: 6