

MITSUBISHI 9900CX 1500kVA UPS DIRECT CABLE CONFIGURATION

CUSTOMER -


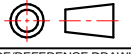
PROJECT NUMBER -

PROJECT LOCATION -

TABLE OF CONTENTS

SHEET NO.	TITLE
01	COVER SHEET
02	OUTLINE
03	BUS CONNECTIONS
04	SYSTEM CONFIGURATION
05	SINGLE LINE
06	SINGLE LINE
07	
08	
09	
10	
11	
12	
13	
14	
15	

REVISIONS
0. INITIAL RELEASE PER ECN 606 Z.ZAJAC 9/25/17
1. UPDATED PER ECN 936 Z.ZAJAC 11/15/2018
2. UPDATED PER ECN 962 Z.ZAJAC 11/29/2018
3. UPDATED PER ECN 1020 Z.ZAJAC 1/21/2019
4. ADJUSTED DIMENSIONS ACCURACY; UPDATED PER ECN 1391 Z.ZAJAC 7/15/2019

DIMENSIONS IN: IN [MM] (REF)	SCALE - NTS -	DRAFTER Z.ZAJAC	DATE 9/25/17	 MITSUBISHI ELECTRIC
<small>PROPRIETARY</small> <small>This document is the property of Mitsubishi Electric Power Products, Inc. and contains proprietary and confidential information which must not be duplicated, used or disclosed other than as expressly authorized by Mitsubishi Electric Power Products, Inc.</small>		APPROVED N.RIEMER	DATE 9/25/17	
CORE/REFERENCE DRAWING (IF APPLICABLE)				TITLE 9900CX 1500 KVA
DWG. NO. UD-100689		SHEET 1 OF 6		REV. 4

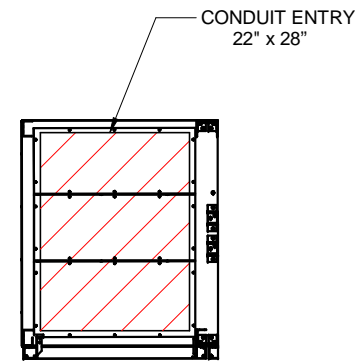
TYPE: 9900CX
 RATING: 1500KVA-3P3W-480V-60Hz
 HEAT REJECTION: 170.6 kBTUs/hour (TYPICAL)

NOTES:

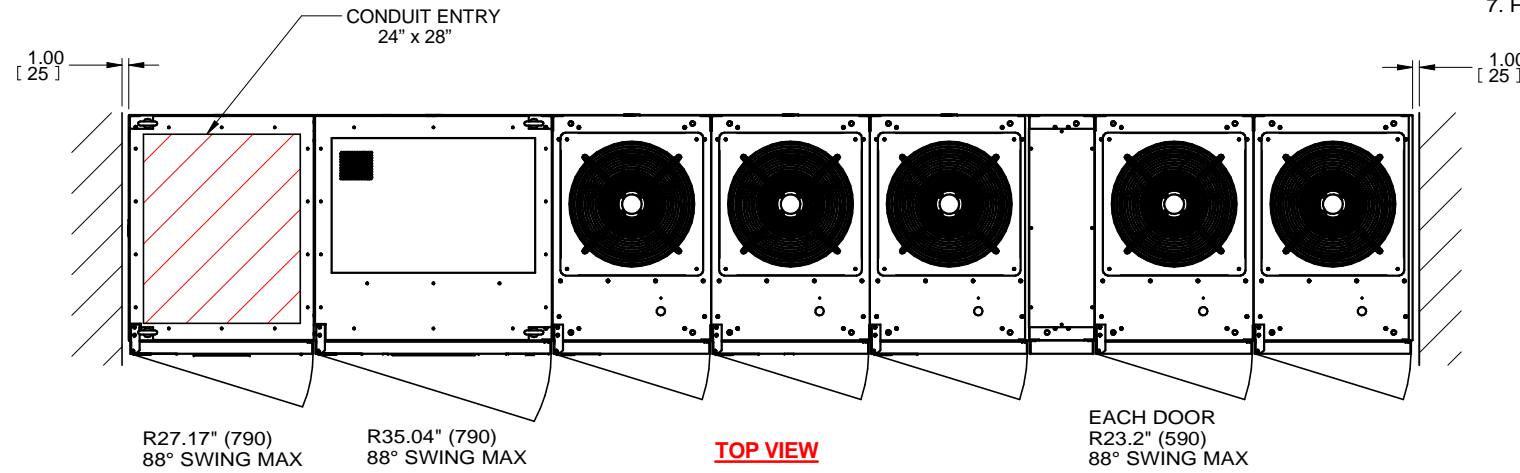
1. DIMENSIONS ARE SHOWN IN INCHES [MILLIMETERS].
2. SIDE SPACE 1"[25] IS NOT REQUIRED WHEN SIDECARS ARE USED.
3. CABINET SHOULD BE MAINTAINED UPRIGHT WITHIN +/- 15° DURING HANDLING.
4. EACH BASE CHANNEL HAS 2 or 4 x 0.8"[20] DIAMETER HOLES TO FIX UPS ON THE GROUND.
5. LIFTING EYES OPTIONAL.
6. APPROXIMATE WEIGHT.

UPS MODULE (LEFT) 5,280LBS (2,400kg)
 UPS MODULE (RIGHT) 3,638LBS (1,650kg)
 BYPASS MODULE 2,425LBS (1,100kg)

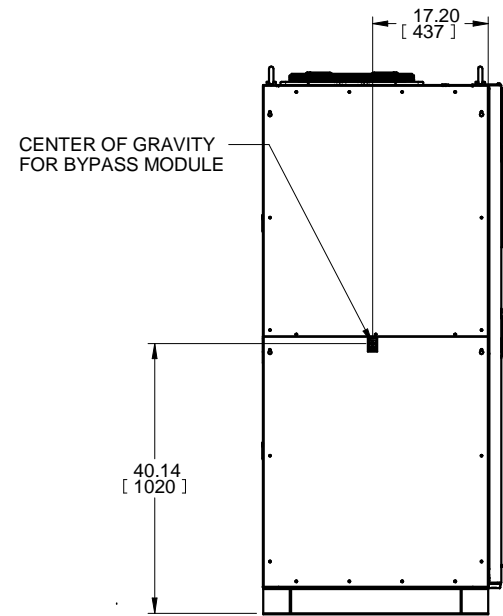
7. FLOOR SHALL BE FLAT AND LEVEL TO 0.3" SURROUNDING UPS MOUNTING.



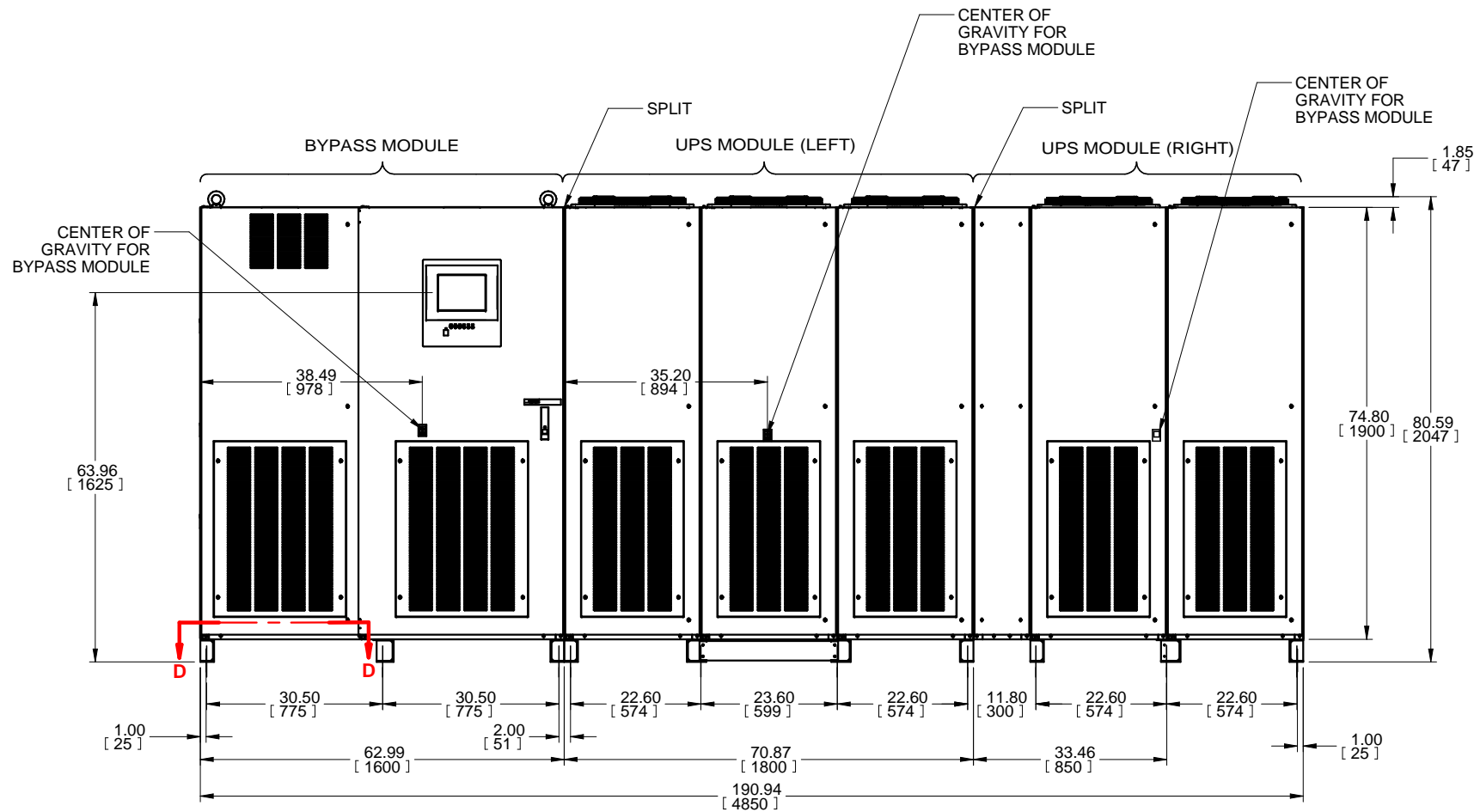
SECTION D-D
BOTTOM CABLE ENTRY



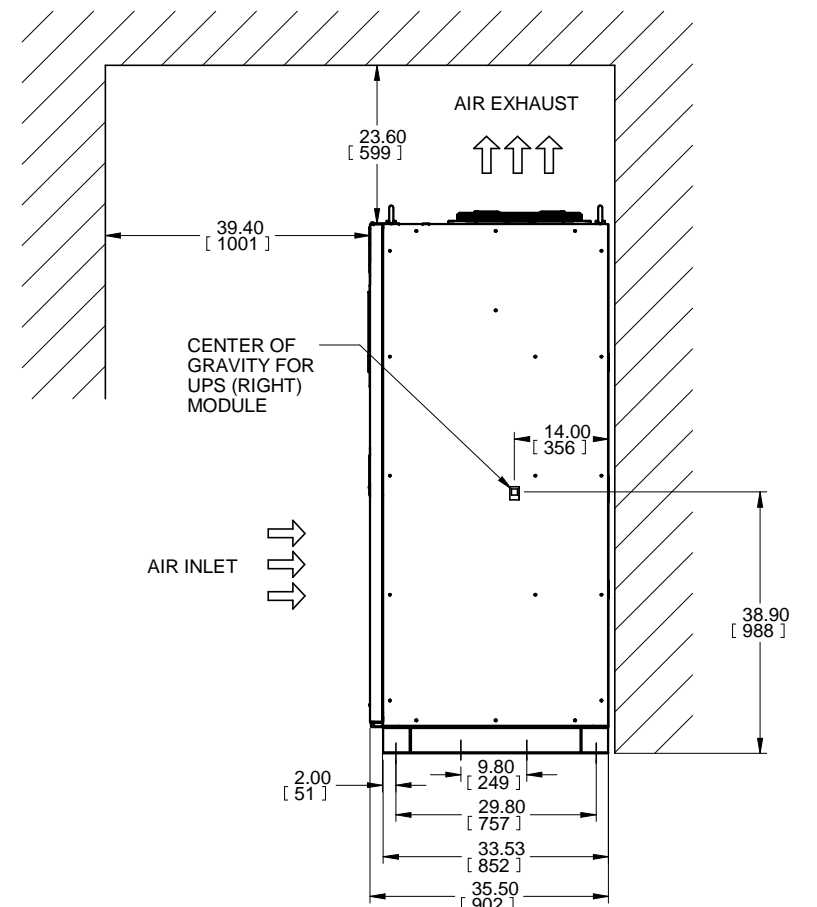
TOP VIEW



LEFT SIDE VIEW



FRONT VIEW



RIGHT SIDE VIEW

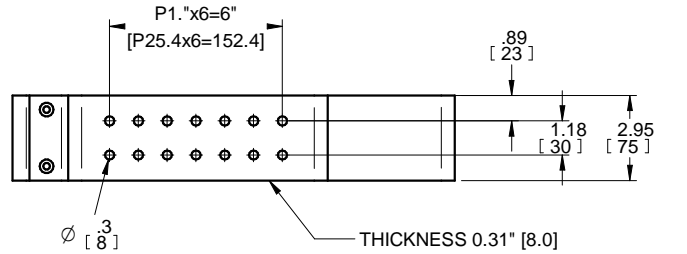
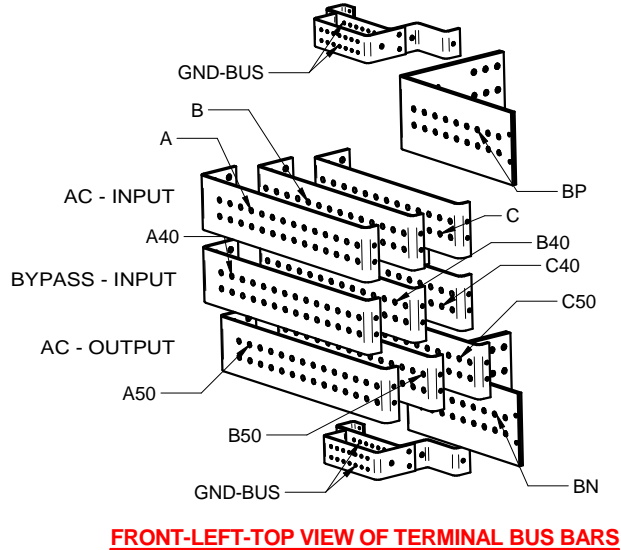
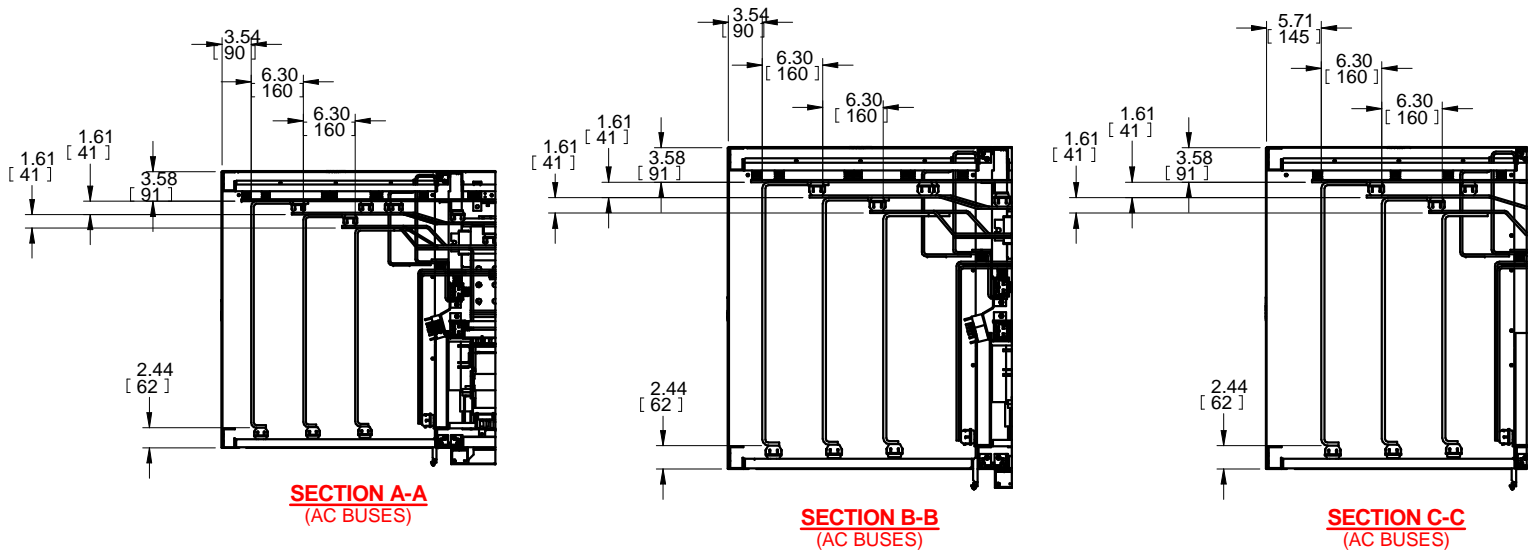
REVISIONS

0. INITIAL RELEASE PER ECN 606 Z.ZAJAC 9/25/17
1. UPDATED PER ECN 936 Z.ZAJAC 11/15/2018
2. UPDATED PER ECN 962 Z.ZAJAC 11/29/2018
3. UPDATED PER ECN 1020 Z.ZAJAC 1/21/2019
4. ADJUSTED DIMENSIONS ACCURACY; UPDATED PER ECN 1391 Z.ZAJAC 7/15/2019

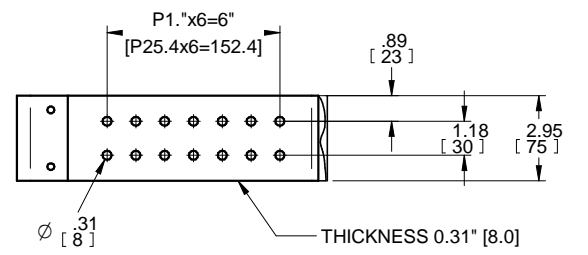
DIMENSIONS IN: IN [MM] (REF)	SCALE - NTS -	DRAFTER Z.ZAJAC	DATE 9/25/17	
<small>PROPRIETARY</small> This document is the property of Mitsubishi Electric Power Products, Inc. and contains proprietary and confidential information which must not be duplicated, used or disclosed other than as expressly authorized by Mitsubishi Electric Power Products, Inc.		APPROVED N.RIEMER	DATE 9/25/17	
TITLE 9900CX 1500 KVA		DWG. NO. UD-100689		SHEET 2 OF 6
CORE/REFERENCE DRAWING (IF APPLICABLE)		REV. 4		

NOTES:

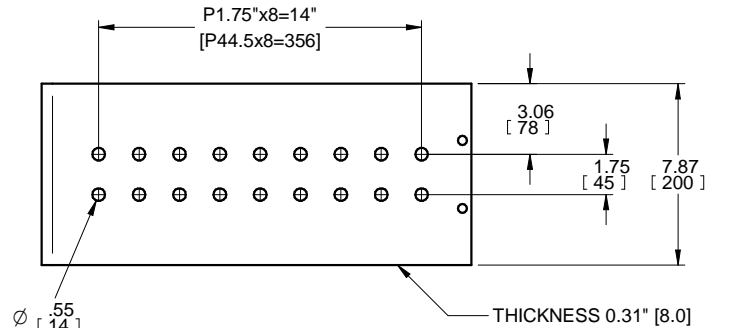
6. EXTERNAL WIRES OR CABLES SHALL BE PROVIDED BY CUSTOMERS FOR AC-INPUT, DC-INPUT, BYPASS-INPUT, AND AC-OUTPUT. (OUT OF PROVISION)



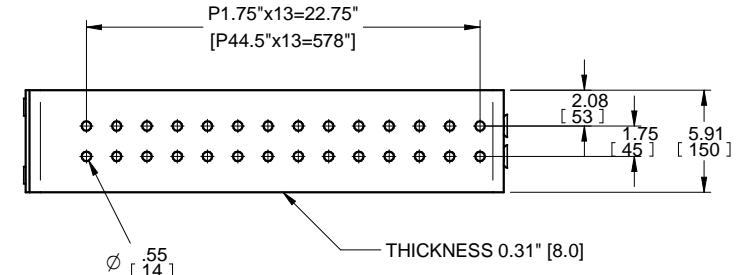
GND-BUS DETAIL (NEAR SIDE)



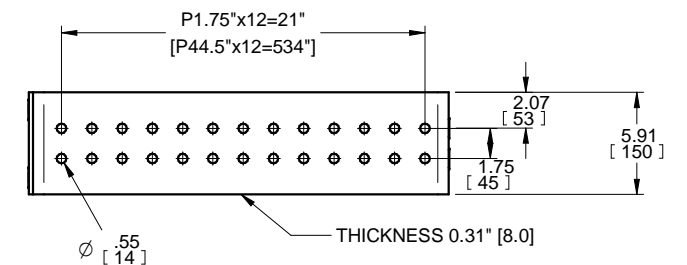
GND-BUS DETAIL (INSIDE)



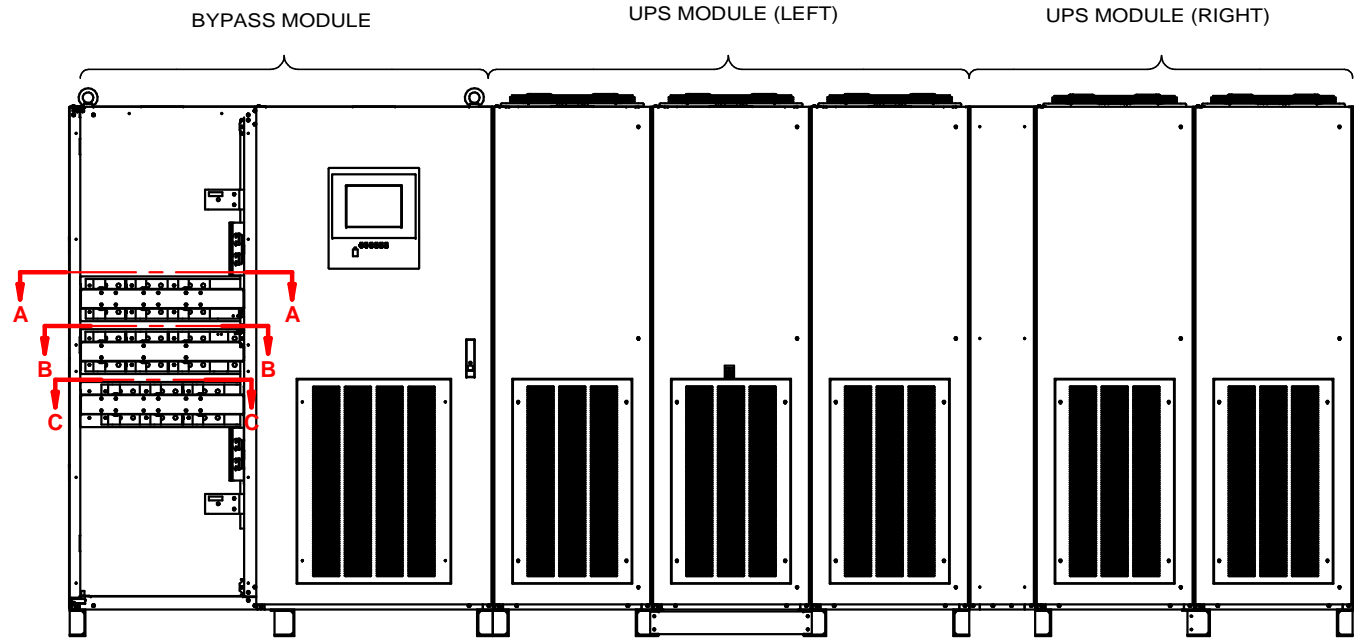
DC BUS BAR DETAIL (BP, BN)



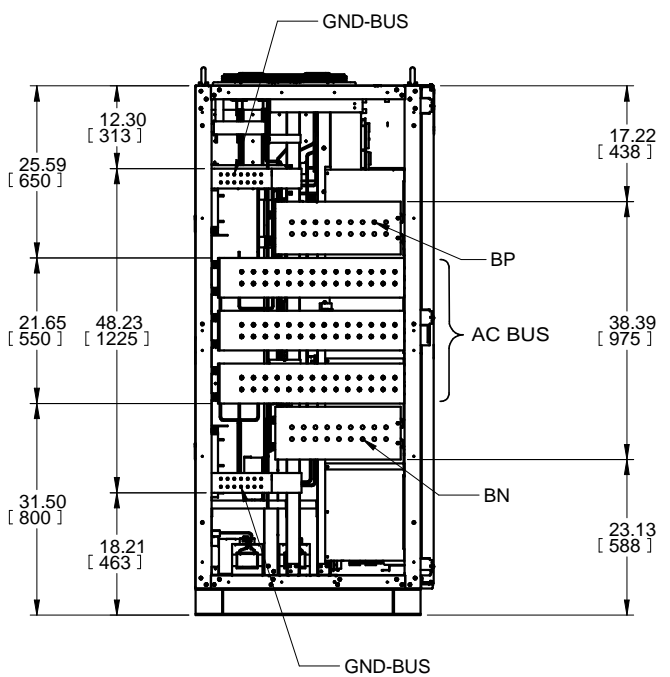
AC BUS BAR DETAIL (A, B, A40, B40, A50, B50)



AC BUS BAR DETAIL (C, C40, C50)



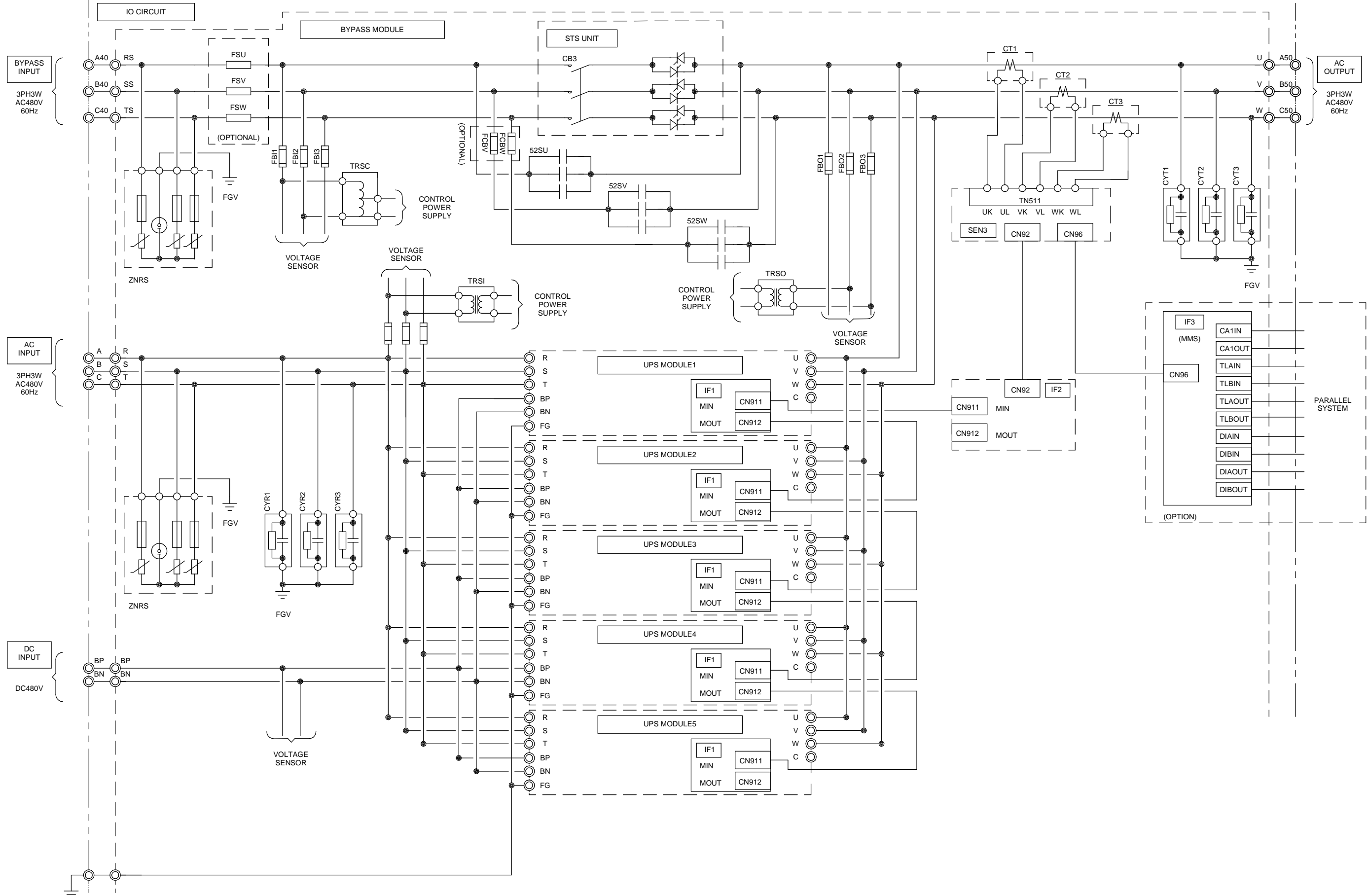
FRONT INSIDE VIEW



LEFT INSIDE VIEW

REVISIONS	0. INITIAL RELEASE PER ECN 606 Z.ZAJAC 9/25/17
1. UPDATED PER ECN 936 Z.ZAJAC 11/15/2018	
2. UPDATED PER ECN 962 Z.ZAJAC 11/29/2018	
3. UPDATED PER ECN 1020 Z.ZAJAC 1/21/2019	
4. ADJUSTED DIMENSIONS ACCURACY; UPDATED PER ECN 1391 Z.ZAJAC 7/15/2019	

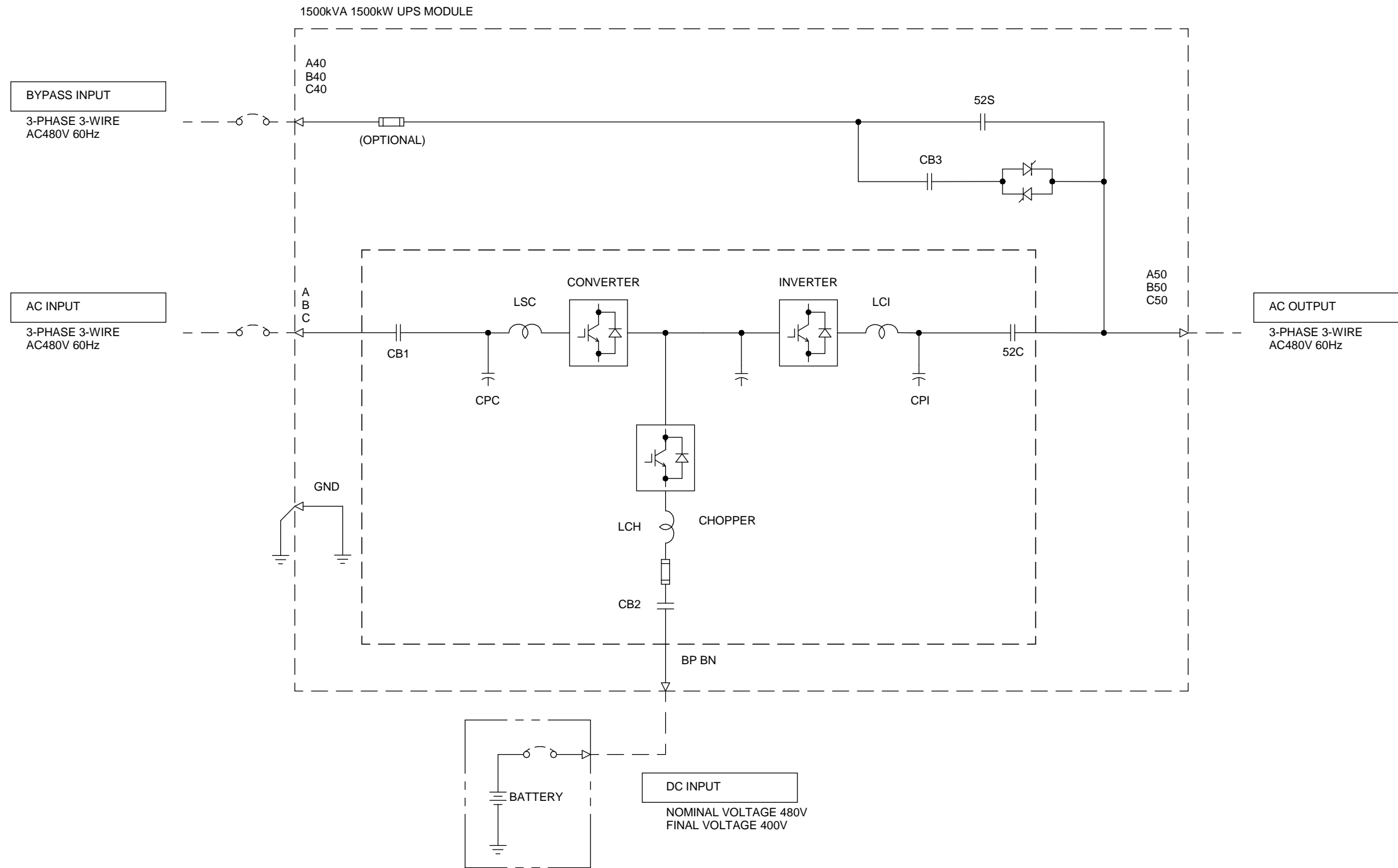
DIMENSIONS IN: IN [MM] (REF)	SCALE - NTS -	DRAFTER Z.ZAJAC	DATE 9/25/17	<p>MITSUBISHI ELECTRIC</p>	
<p>PROPRIETARY This document is the property of Mitsubishi Electric Power Products, Inc. and contains proprietary and confidential information which must not be duplicated, used or disclosed other than as expressly authorized by Mitsubishi Electric Power Products, Inc.</p>		APPROVED N.RIEMER	DATE 9/25/17		TITLE OUTLINE 9900CX 1500 KVA
CORE/REFERENCE DRAWING (IF APPLICABLE)		DWG. NO. UD-100689		SHEET 3 OF 6	REV. 4



REVISIONS
0. INITIAL RELEASE PER ECN 606 Z.ZAJAC 9/25/17
1. UPDATED PER ECN 936 Z.ZAJAC 11/15/2018
2. UPDATED PER ECN 962 Z.ZAJAC 11/29/2018
3. UPDATED PER ECN 1020 Z.ZAJAC 1/21/2019
4. ADJUSTED DIMENSIONS ACCURACY; UPDATED PER ECN 1391 Z.ZAJAC 7/15/2019

DIMENSIONS IN: IN [MM] (REF)	SCALE - NTS -	DRAFTER Z.ZAJAC	DATE 9/25/17
<p>PROPRIETARY This document is the property of Mitsubishi Electric Power Products, Inc. and contains proprietary and confidential information which must not be duplicated, used or disclosed other than as expressly authorized by Mitsubishi Electric Power Products, Inc.</p>		APPROVED N.RIEMER	DATE 9/25/17
CORE/REFERENCE DRAWING (IF APPLICABLE)		TITLE 9900CX 1500 KVA	
		DWG. NO. UD-100689	SHEET 4 OF 6 REV. 4

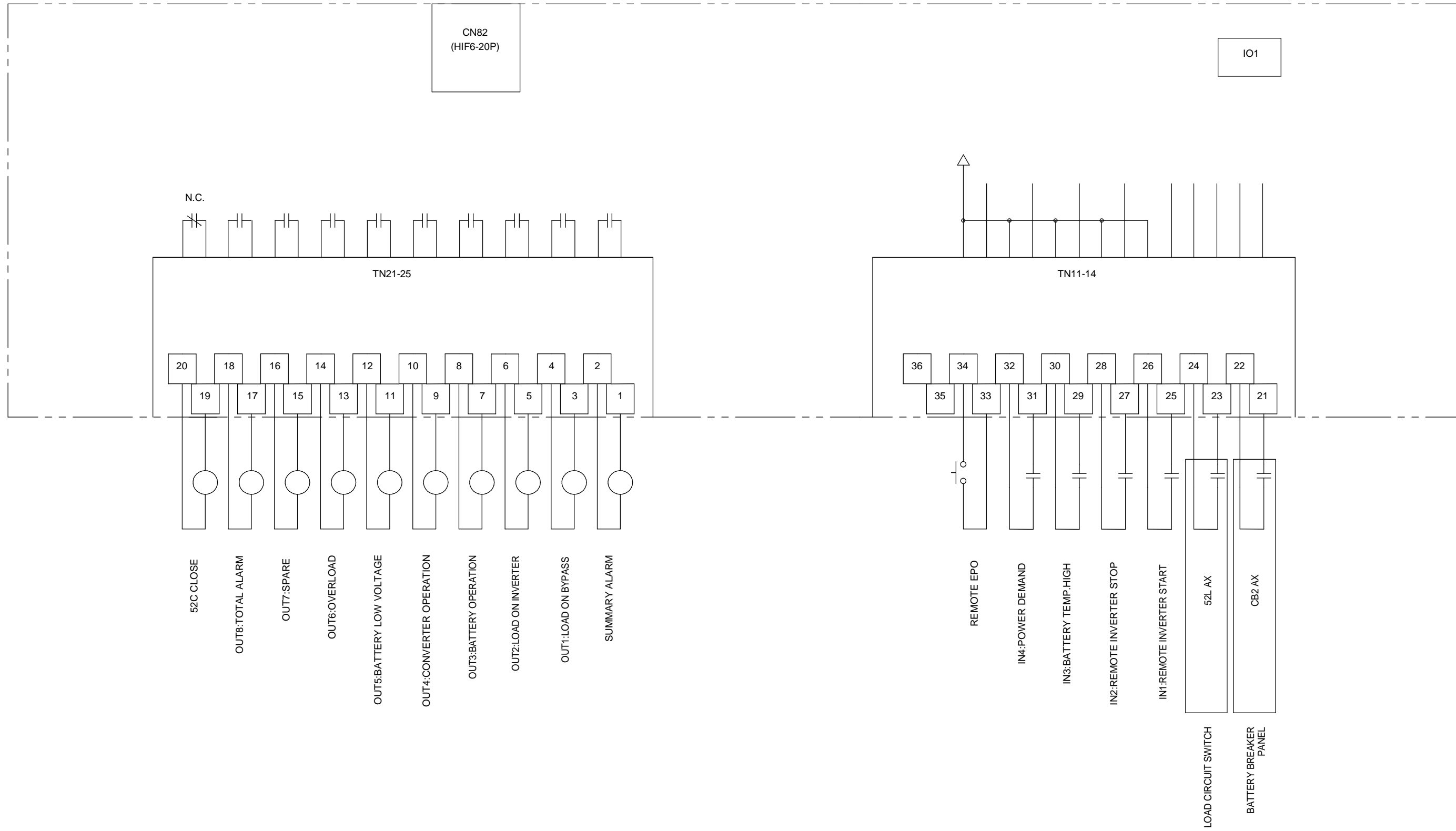
<p>MITSUBISHI ELECTRIC</p>	TITLE 9900CX 1500 KVA
	DWG. NO. UD-100689



REVISIONS
0. INITIAL RELEASE PER ECN 606 Z.ZAJAC 9/25/17
1. UPDATED PER ECN 936 Z.ZAJAC 11/15/2018
2. UPDATED PER ECN 962 Z.ZAJAC 11/29/2018
3. UPDATED PER ECN 1020 Z.ZAJAC 1/21/2019
4. ADJUSTED DIMENSIONS ACCURACY; UPDATED PER ECN 1391 Z.ZAJAC 7/15/2019

DIMENSIONS IN: IN [MM] (REF)	SCALE - NTS -	DRAFTER Z.ZAJAC	DATE 9/25/17	<p>MITSUBISHI ELECTRIC</p>
<p>PROPRIETARY This document is the property of Mitsubishi Electric Power Products, Inc. and contains proprietary and confidential information which must not be duplicated, used or disclosed other than as expressly authorized by Mitsubishi Electric Power Products, Inc.</p>		APPROVED N.RIEMER	DATE 9/25/17	
CORE/REFERENCE DRAWING (IF APPLICABLE)				TITLE OUTLINE 9900CX 1500 KVA
DWG. NO. UD-100689		SHEET 5 OF 6		REV. 4

(OPTION)
TO IO2:
EXTERNAL I/F BOARD



REVISIONS
0. INITIAL RELEASE PER ECN 606 Z.ZAJAC 9/25/17
1. UPDATED PER ECN 936 Z.ZAJAC 11/15/2018
2. UPDATED PER ECN 962 Z.ZAJAC 11/29/2018
3. UPDATED PER ECN 1020 Z.ZAJAC 1/21/2019
4. ADJUSTED DIMENSIONS ACCURACY; UPDATED PER ECN 1391 Z.ZAJAC 7/15/2019

DIMENSIONS IN: IN [MM] (REF)	SCALE - NTS -	DRAFTER Z.ZAJAC	DATE 9/25/17	MITSUBISHI ELECTRIC
<small>PROPRIETARY</small> <small>This document is the property of Mitsubishi Electric Power Products, Inc. and contains proprietary and confidential information which must not be duplicated, used or disclosed other than as expressly authorized by Mitsubishi Electric Power Products, Inc.</small>		APPROVED N.RIEMER	DATE 9/25/17	
CORE/REFERENCE DRAWING (IF APPLICABLE)				TITLE OUTLINE 9900CX 1500 KVA
DWG. NO. UD-100689		SHEET 6 OF 6		REV. 4