

# MITSUBISHI 9900CX 1400kVA UPS DIRECT CABLE CONFIGURATION

CUSTOMER -



PROJECT NUMBER -

PROJECT LOCATION -

### TABLE OF CONTENTS

SHEET NO.	TITLE
01	COVER SHEET
02	OUTLINE
03	BUS CONNECTIONS
04	SYSTEM CONFIGURATION
05	SINGLE LINE
06	SINGLE LINE
07	
08	
09	
10	
11	
12	
13	
14	
15	

REVISIONS	0. INITIAL RELEASE GDJ 11/16/17
	1. RELEASED FOR CONSTRUCTION AJK 6/22/17
	2. NOTE 7 ADDED ZMZ 09/09/17
	3. HEAT REJECTION VALUE CHANGED ZMZ 02/02/18
	4. ADDED SHEET 2 FOR BUS CONNECTION DETAILS Z.ZAJAC 10/05/18
	5. UPDATED PER ECN 961 M.OFFI 11/29/2018
	6. REMOVED EXTENSION MODULE FROM VIEWS; UPDATED PER ECN 1329 Z.ZAJAC 6/4/2019
	7. ADJUSTED DIMENSIONS ACCURACY; UPDATED PER ECN 1392 Z.ZAJAC 7/15/2019

DIMENSIONS IN: IN [MM] (REF)	SCALE - NTS -	DRAFTER M.OFFI	DATE 11/26/18	 <b>MITSUBISHI ELECTRIC</b>
<small>PROPRIETARY</small> <small>This document is the property of Mitsubishi Electric Power Products, Inc. and contains proprietary and confidential information which must not be duplicated, used or disclosed other than as expressly authorized by Mitsubishi Electric Power Products, Inc.</small>		APPROVED N.RIEMER	DATE 11/26/18	
CORE/REFERENCE DRAWING (IF APPLICABLE)				<b>TITLE</b> OUTLINE 9900CX 1400KVA
DWG. NO. <b>UD-100572</b>		SHEET 1 OF 6		REV. <b>7</b>

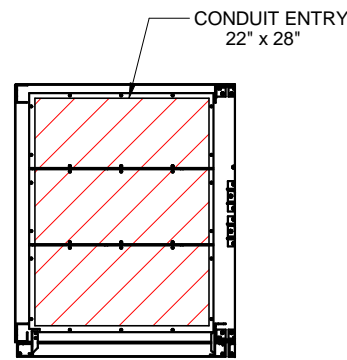
TYPE: 9900CX  
 RATING: 1400KVA-3P3W-480V-60Hz  
 HEAT REJECTION: 150.0 kBTUs/hour (TYPICAL)

NOTES:

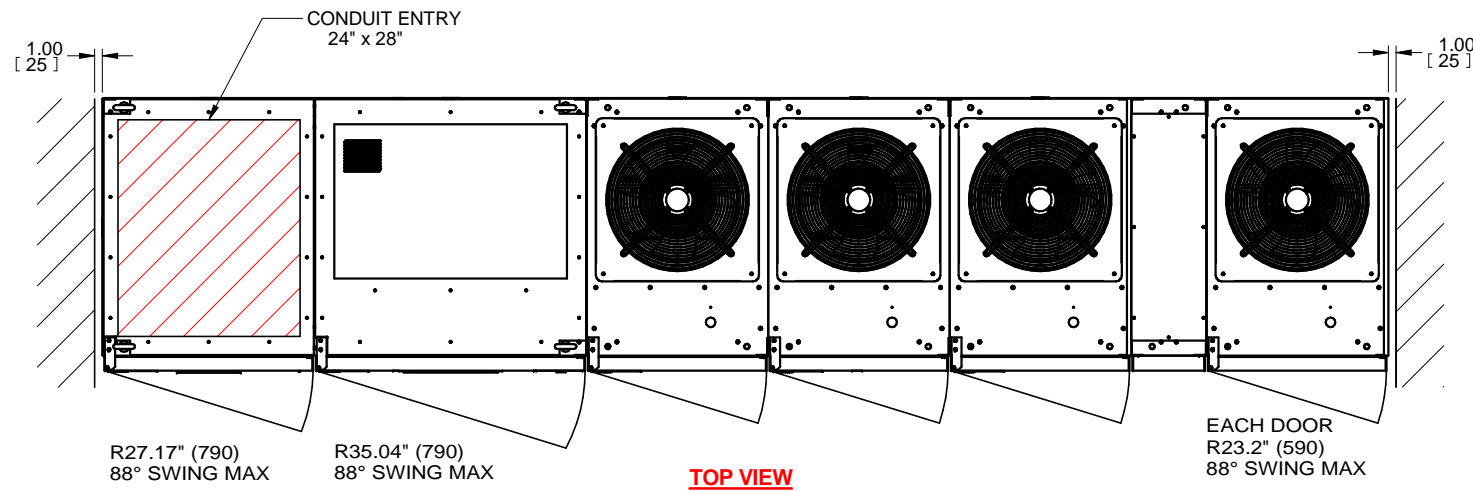
1. DIMENSIONS ARE SHOWN IN INCHES" [MILLIMETERS].
2. SIDE SPACE 1" [25] IS NOT REQUIRED WHEN SIDECARS ARE USED.
3. CABINET SHOULD BE MAINTAINED UPRIGHT WITHIN ± 15° DURING HANDLING.
4. EACH BASE CHANNEL HAS 2 or 4 x 0.8" [20] DIAMETER HOLES TO FIX UPS ON THE GROUND.
5. LIFTING EYES OPTIONAL.
6. APPROXIMATE WEIGHT.

UPS MODULE (LEFT) 5,280LBS (2,400kg)  
 UPS MODULE (RIGHT) 1,700LBS (850kg)  
 BYPASS MODULE 2,425LBS (1,100kg)

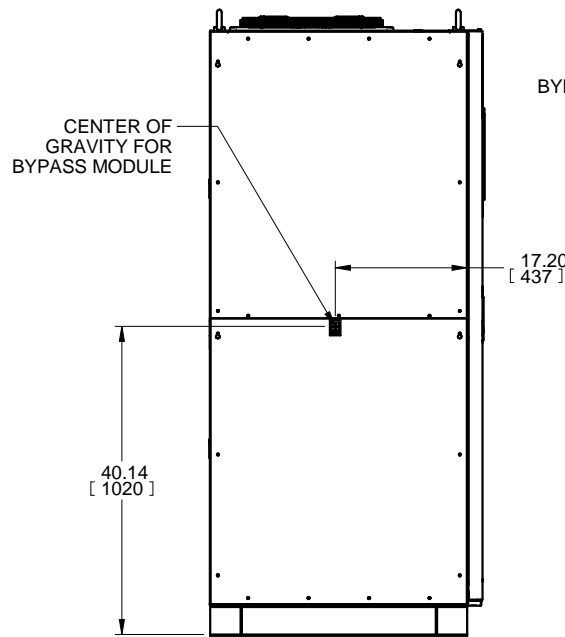
7. FLOOR SHALL BE FLAT AND LEVEL TO 0.3" SURROUNDING UPS MOUNTING.



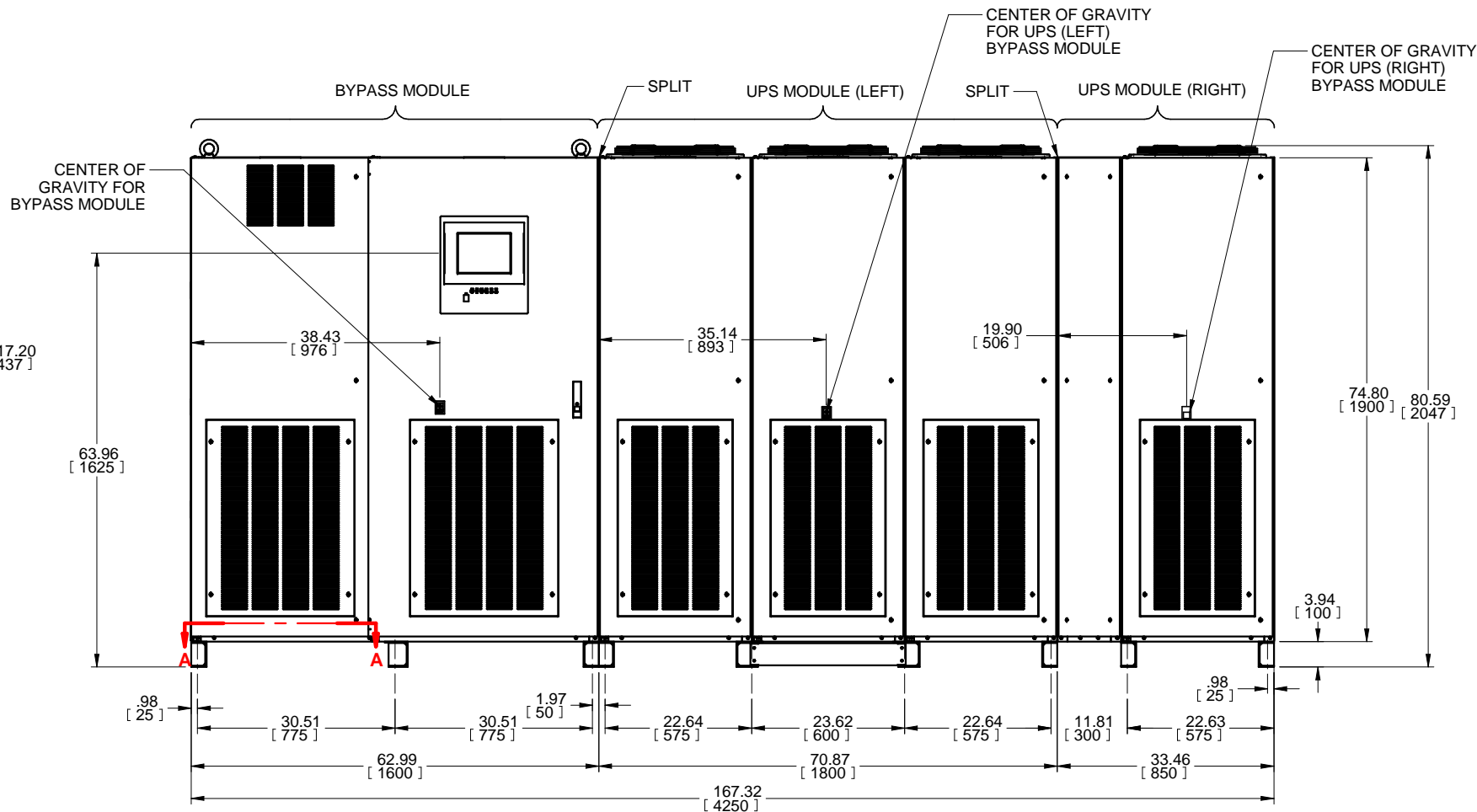
**SECTION A-A**  
 BOTTOM CABLE ENTRY



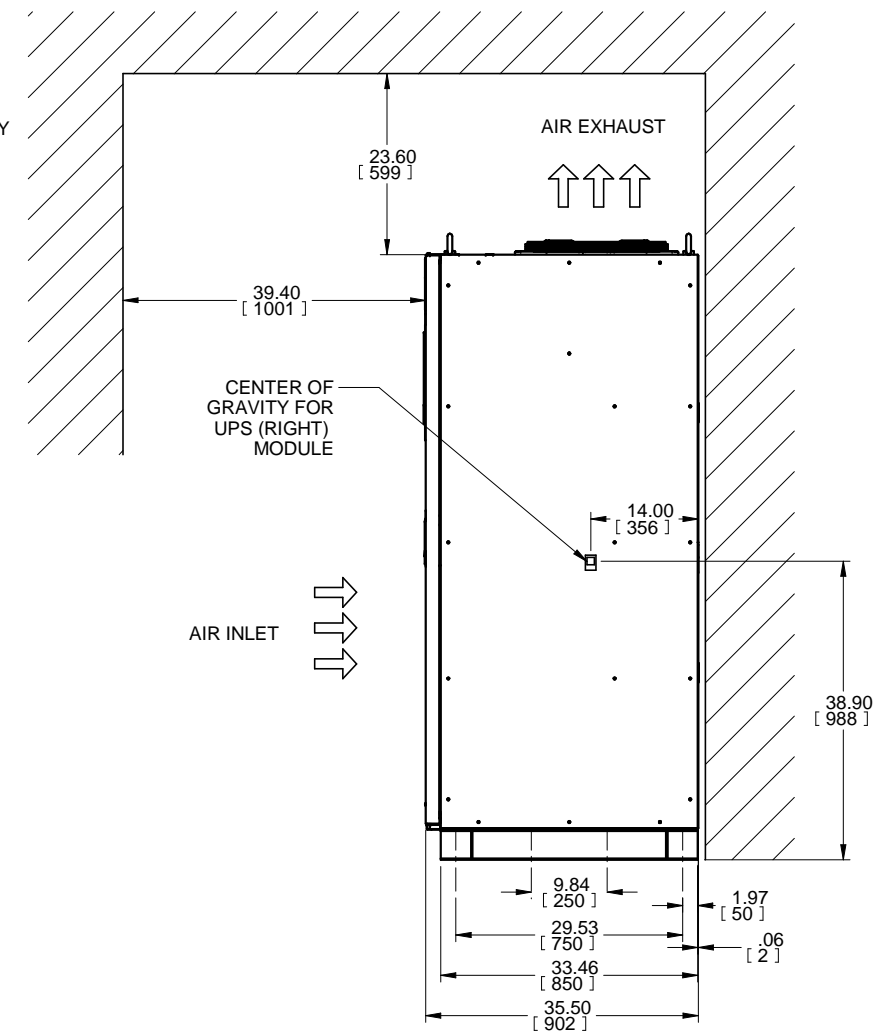
**TOP VIEW**



**LEFT SIDE VIEW**



**FRONT VIEW**

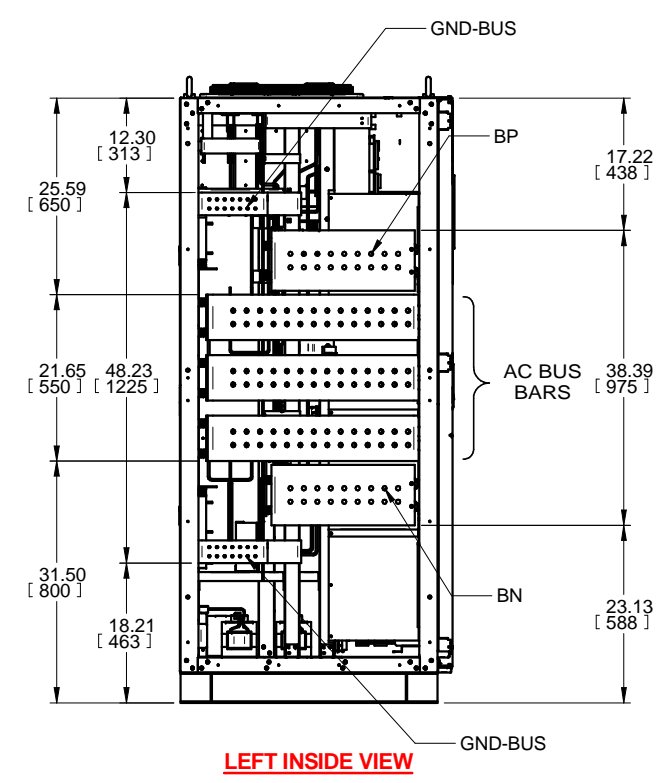
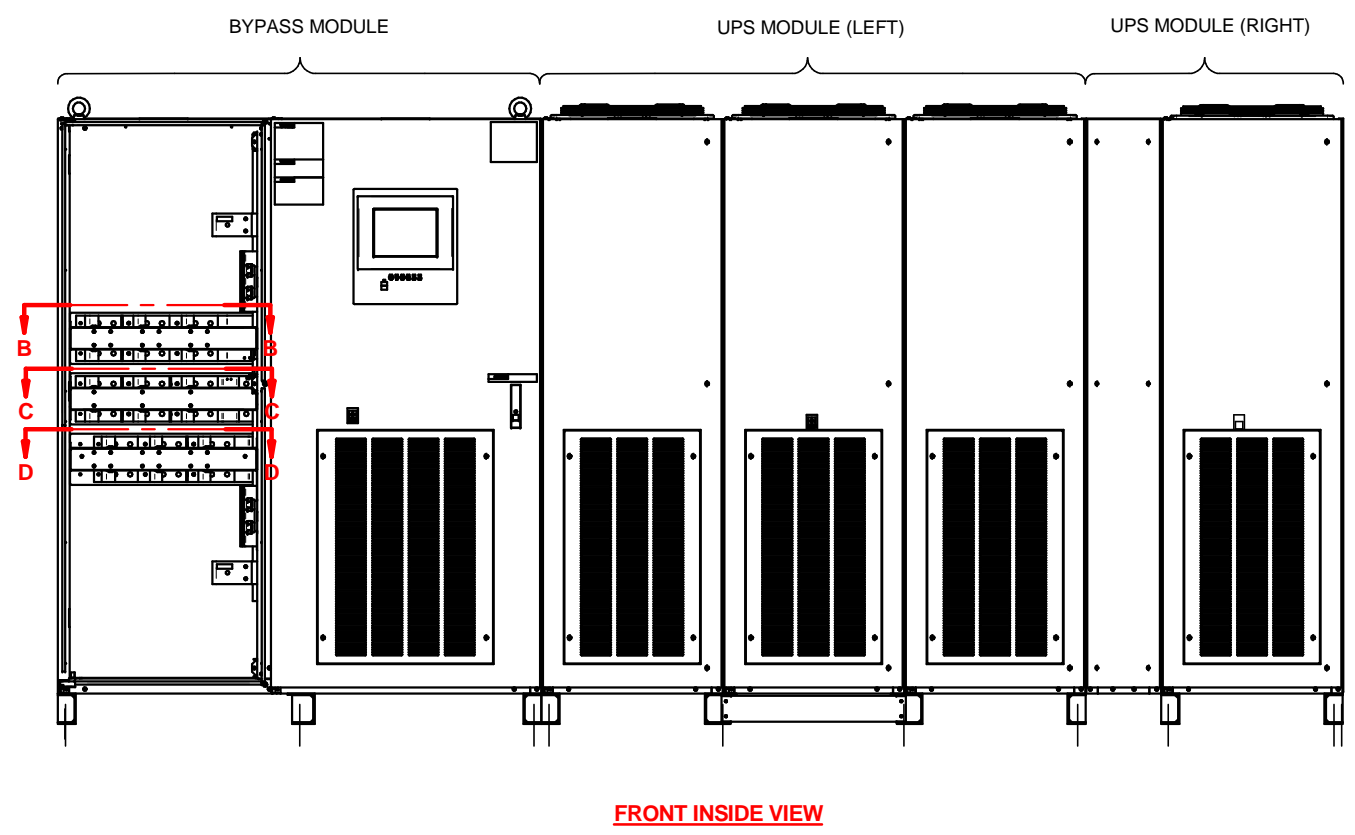
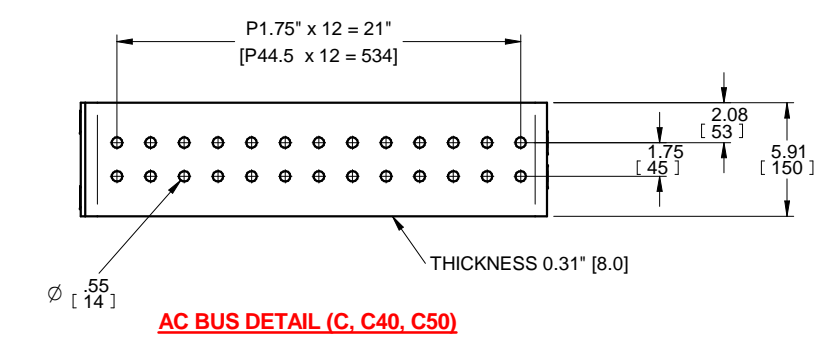
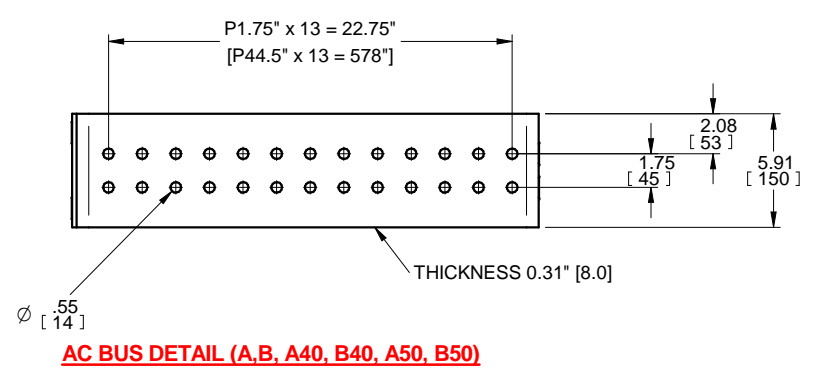
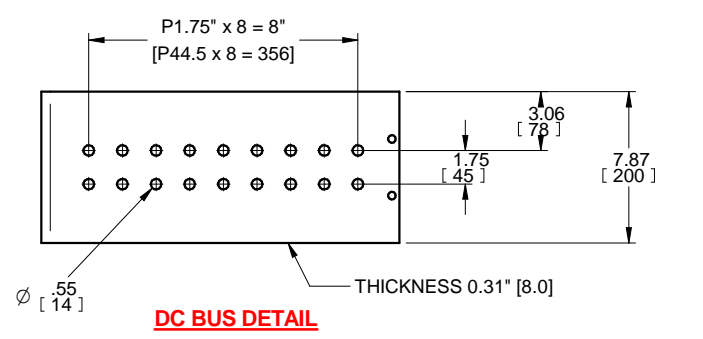
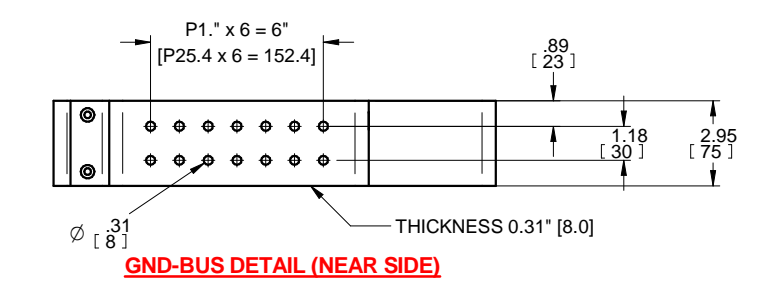
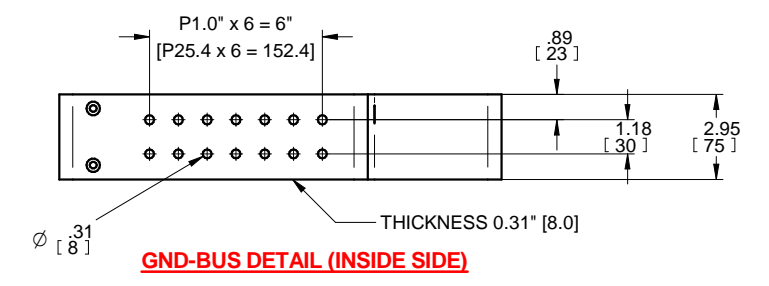
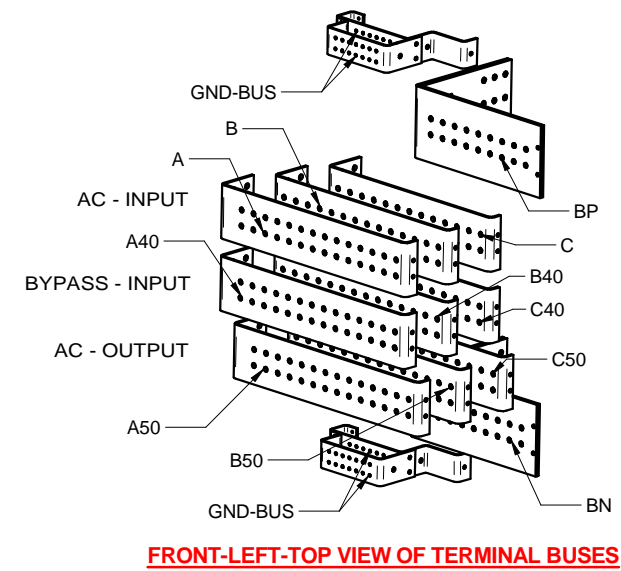
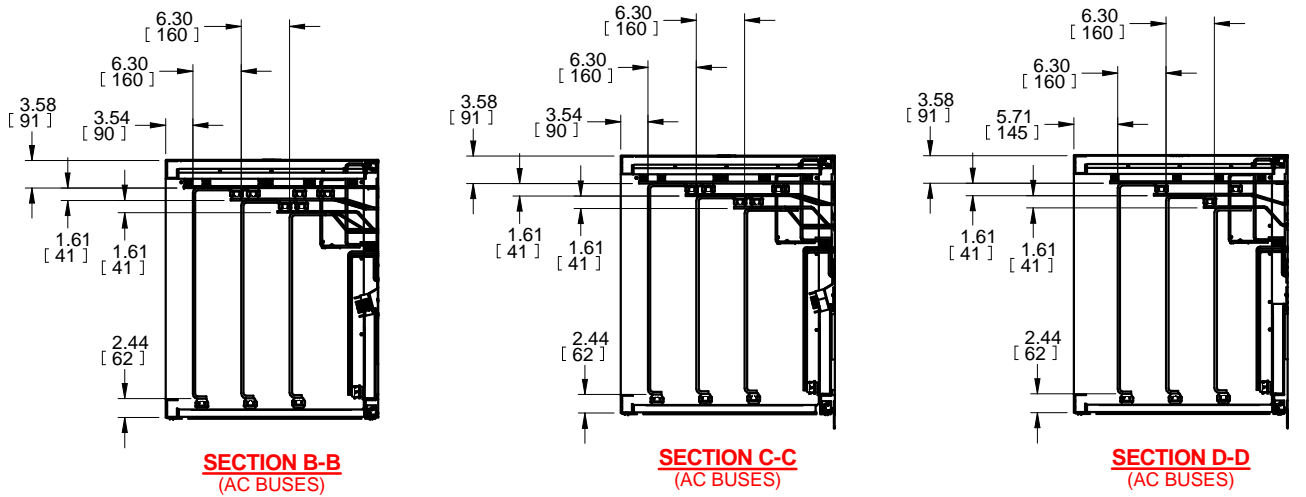


**RIGHT SIDE VIEW**

REVISIONS	DATE	DESCRIPTION
0. INITIAL RELEASE	GDJ 11/16/17	
1. RELEASED FOR CONSTRUCTION	AJK 6/22/17	
2. NOTE 7 ADDED	ZMZ 09/09/17	
3. HEAT REJECTION VALUE CHANGED	ZMZ 02/02/18	
4. ADDED SHEET 2 FOR BUS CONNECTION DETAILS	Z.ZAJAC 10/05/18	
5. UPDATED PER ECN 961	M.OFFI 11/29/2018	
6. REMOVED EXTENSION MODULE FROM VIEWS; UPDATED PER ECN 1329	Z.ZAJAC 6/4/2019	
7. ADJUSTED DIMENSIONS ACCURACY; UPDATED PER ECN 1392	Z.ZAJAC 7/15/2019	

DIMENSIONS IN: IN [MM] (REF)	SCALE - NTS -	DRAFTER M.OFFI	DATE 11/26/18	<p><b>MITSUBISHI ELECTRIC</b></p>
<p>PROPRIETARY</p> <p>This document is the property of Mitsubishi Electric Power Products, Inc. and contains proprietary and confidential information which must not be duplicated, used or disclosed other than as expressly authorized by Mitsubishi Electric Power Products, Inc.</p>		APPROVED N.RIEMER	DATE 11/26/18	
<p>CORE/REFERENCE DRAWING (IF APPLICABLE)</p>		<p>TITLE</p> <p><b>OUTLINE</b>  <b>9900CX 1400KVA</b></p>		<p>DWG. NO. UD-100572</p> <p>SHEET 2 OF 6</p> <p>REV. 7</p>

NOTES:  
 6. EXTERNAL WIRES OR CABLES SHALL BE PROVIDED BY CUSTOMERS FOR AC-INPUT, DC-INPUT, BYPASS-INPUT, AND AC-OUTPUT. (OUT OF PROVISION)

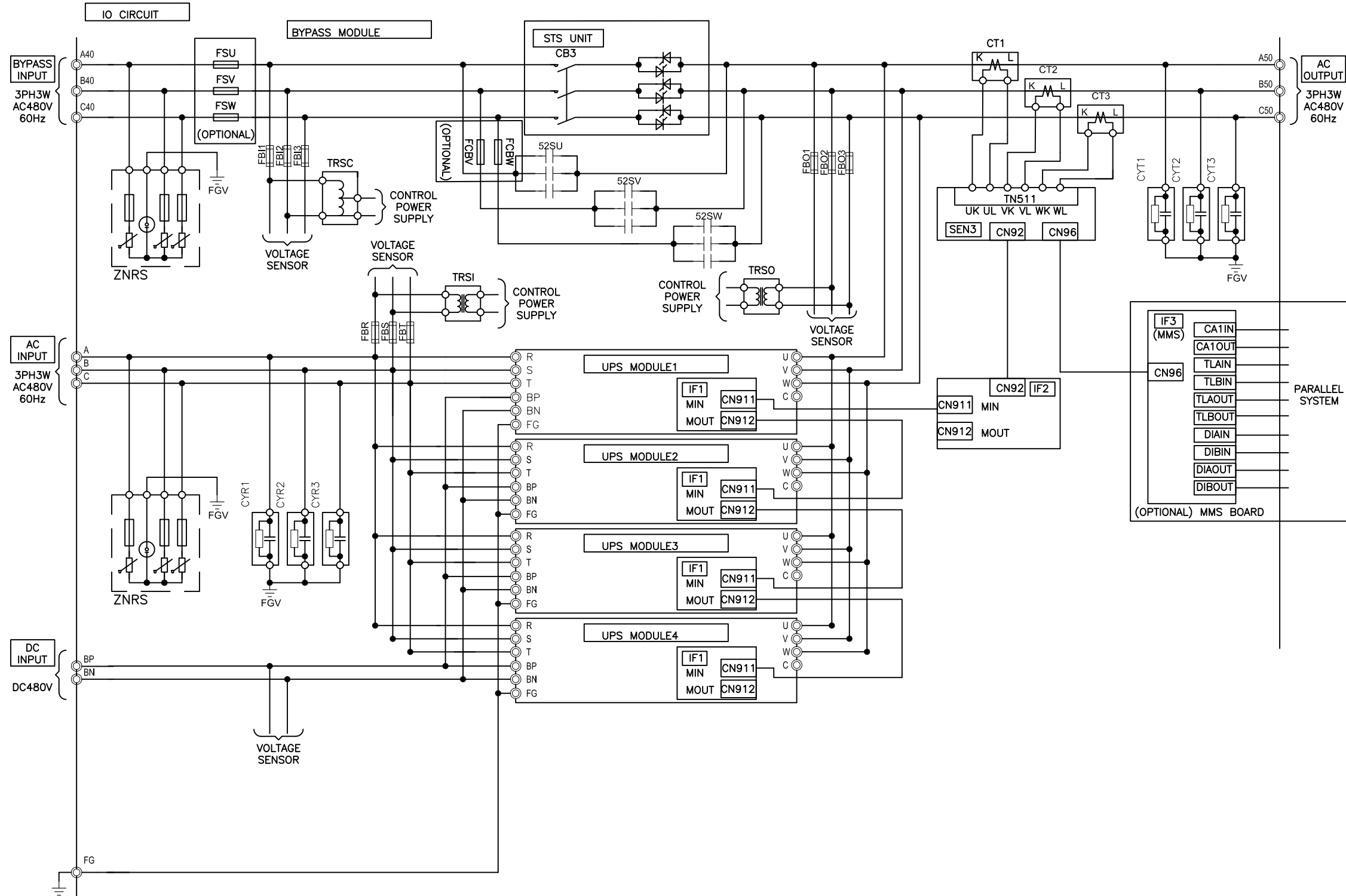


REVISIONS	DATE	BY	DESCRIPTION
0. INITIAL RELEASE	GDJ 11/16/17		
1. RELEASED FOR CONSTRUCTION	AJK 6/22/17		
2. NOTE 7 ADDED	ZMZ 09/09/17		
3. HEAT REJECTION VALUE CHANGED	ZMZ 02/02/18		
4. ADDED SHEET 2 FOR BUS CONNECTION DETAILS	Z.ZAJAC 10/05/18		
5. UPDATED PER ECN 961	M.OFFI 11/29/2018		
6. REMOVED EXTENSION MODULE FROM VIEWS; UPDATED PER ECN 1329	Z.ZAJAC 6/4/2019		
7. ADJUSTED DIMENSIONS ACCURACY; UPDATED PER ECN 1392	Z.ZAJAC 7/15/2019		

DIMENSIONS IN: IN [MM] (REF)	SCALE - NTS -	DRAFTER M.OFFI	DATE 11/26/18
PROPRIETARY This document is the property of Mitsubishi Electric Power Products, Inc. and contains proprietary and confidential information which must not be duplicated, used or disclosed other than as expressly authorized by Mitsubishi Electric Power Products, Inc.		APPROVED N.RIEMER	DATE 11/26/18
CORE/REFERENCE DRAWING (IF APPLICABLE)		TITLE OUTLINE 9900CX 1400KVA	
DWG. NO. UD-100572		SHEET 3 OF 6 REV. 7	

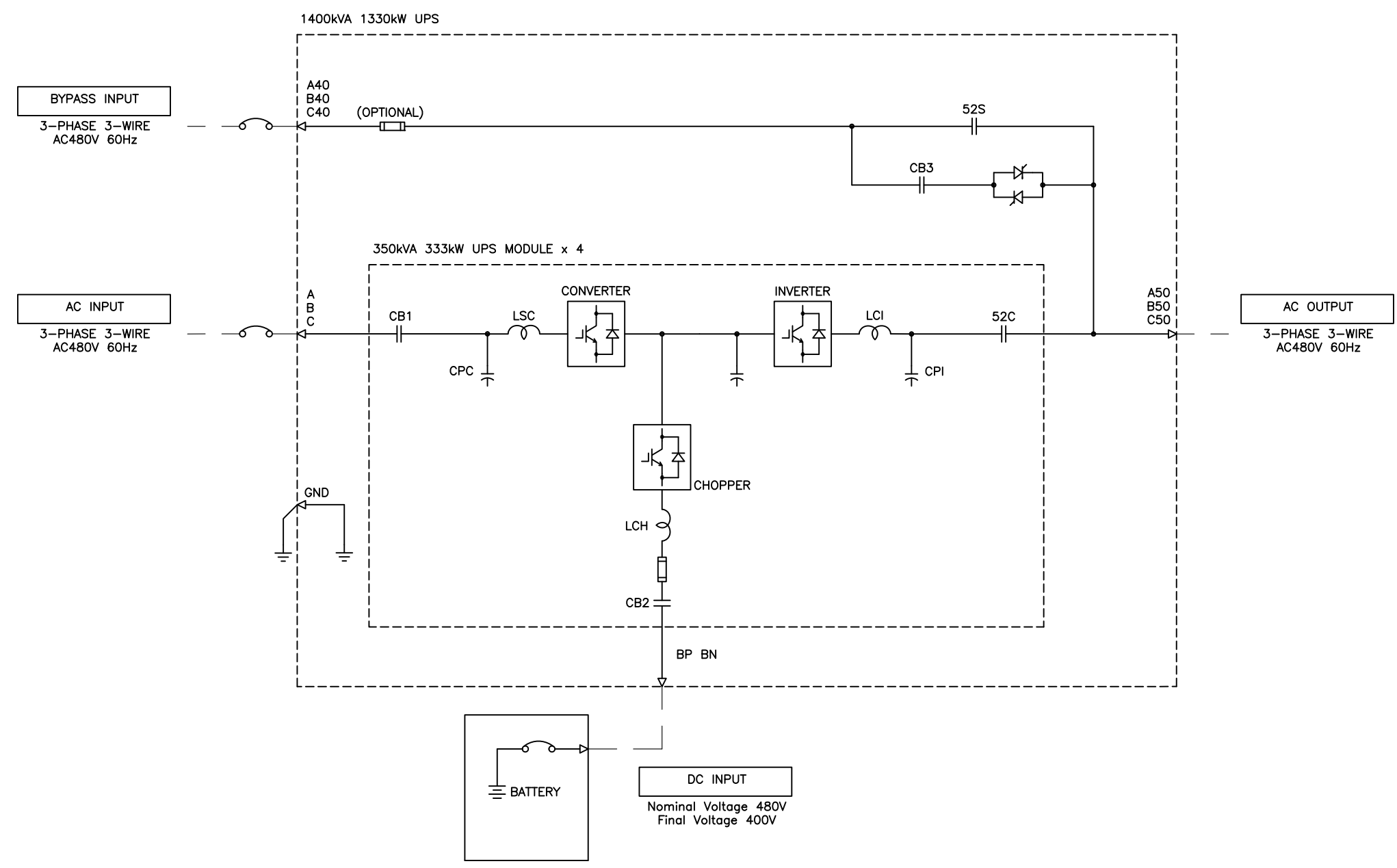
**MITSUBISHI ELECTRIC**

OUTLINE  
9900CX 1400KVA



REVISIONS
0 INITIAL RELEASE GDJ 11/16/16
1.RELEASED FOR CONSTRUCTION AJK 6/22/2017
2. NOTE 7 ADDED ZMZ 9/19/2017
3.HEAT REJECTION VALUE CHANGED ZMZ 2/2/2018
4.ADDED SHEET 2 FOR BUSS CONNECTION DETAILS Z.ZAJAC 10/5/18
5.UPDATED PER ECN 961 M.OFFI 11/29/18
6.REMOVED EXTENSION MODULE FROM VIEWS UPDATED PER ECN 1329 Z.ZAJAC 6/4/19
7. ADJUSTED DIMENSIONS FOR ACCURACY; UPDATED PER ECN 1392 Z.ZAJAC 7/15/19

DIMENSIONS IN: IN (MM)	SCALE: - NTS -	DRAFTER: M.OFFI	DATE: 11/29/2018
PROPRIETARY <small>This document is the property of Mitsubishi Electric Power Products, Inc. and contains proprietary and confidential information which must not be disclosed, used or disclosed other than as expressly authorized by Mitsubishi Electric Power Products, Inc.</small>		APPROVED: N.RIEMER	DATE: 11/29/2018
		TITLE: OUTLINE 9900CX 1400 KVA DWG. NO. UD-100572 SHEET 4 OF 6 REV. 7	



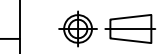
REVISIONS	DATE	DESCRIPTION
0	11/16/16	INITIAL RELEASE
1	6/22/2017	RELEASED FOR CONSTRUCTION
2	9/19/2017	NOTE ADDED
3	2/2/2018	HEAT REJECTION VALUE CHANGED
4	10/5/18	ADDED SHEET 2 FOR BUSS CONNECTION DETAILS
5	11/29/18	UPDATED PER ECN 961
6		REMOVED EXTENSION MODULE FROM VIEWS
7	7/15/19	ADJUSTED DIMENSIONS FOR ACCURACY; UPDATED PER ECN 1329

<p>7. ADJUSTED DIMENSIONS FOR ACCURACY; UPDATED PER ECN 1392</p> <p>Z.ZAJAC 7/15/19</p>	<p>5. UPDATED PER ECN 961</p> <p>M.OFFI 11/29/18</p>	<p>4. ADDED SHEET 2 FOR BUSS CONNECTION DETAILS</p> <p>Z.ZAJAC 10/5/18</p>	<p>3. HEAT REJECTION VALUE CHANGED</p> <p>ZMZ 2/2/2018</p>	<p>2. NOTE ADDED</p> <p>ZMZ 9/19/2017</p>	<p>1. RELEASED FOR CONSTRUCTION</p> <p>AJK 6/22/2017</p>	<p>0 INITIAL RELEASE</p> <p>GDJ 11/16/16</p>
---	--	--	--	---	--	--

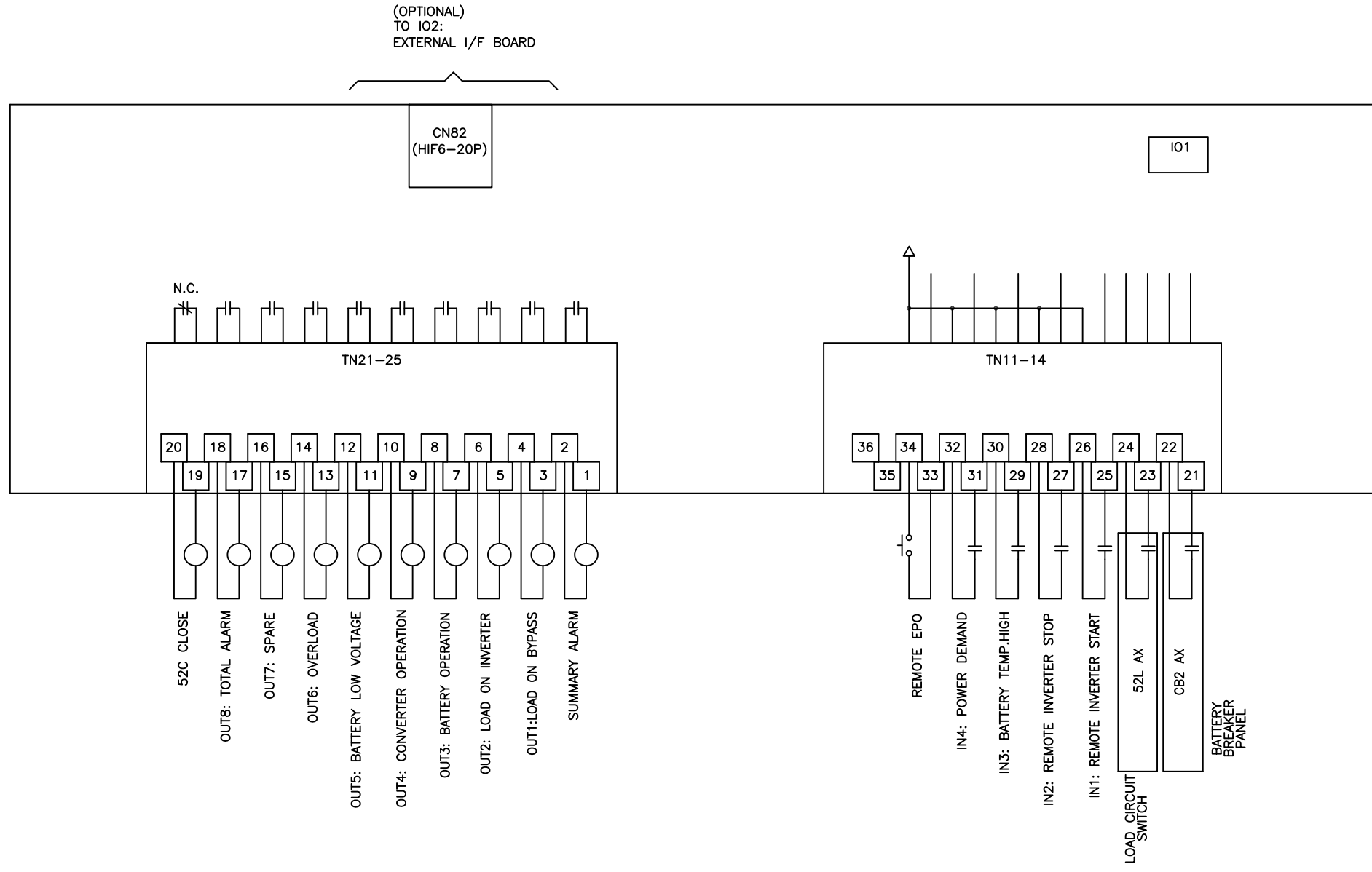
<p>DIMENSIONS IN: IN [MM]</p> <p>SCALE: - NTS -</p> <p>DRAFTER: M.OFFI</p> <p>DATE: 11/29/2018</p>	<p>APPROVED: N.RIEMER</p> <p>DATE: 11/29/2018</p>	<p>TITLE: OUTLINE 9900CX 1400 KVA</p> <p>DWG. NO. UD-100572</p> <p>SHEET 5 OF 6</p> <p>REV. 7</p>
--	---	---



PROPRIETARY  
This document is the property of Mitsubishi Electric Power Products, Inc. and contains proprietary and confidential information which must not be disclosed, used or disclosed other than as expressly authorized by Mitsubishi Electric Power Products, Inc.



CORE [REFERENCE] DRAWING



REVISIONS

0	INITIAL RELEASE GDJ 11/16/16
1	RELEASED FOR CONSTRUCTION AJK 6/22/2017
2	NOTE 7 ADDED ZMZ 9/19/2017
3	HEAT REJECTION VALUE CHANGED ZMZ 2/2/2018
4	ADDED SHEET 2 FOR BUSS CONNECTION DETAILS Z.ZAJAC 10/5/18
5	UPDATED PER ECN 961 M.OFFI 11/29/18
6	REMOVED EXTENSION MODULE FROM VIEWS UPDATED PER ECN 1329 Z.ZAJAC 6/4/19
7	ADJUSTED DIMENSIONS FOR ACCURACY; UPDATED PER ECN 1392 Z.ZAJAC 7/15/19

DIMENSIONS IN: IN [MM]	SCALE - NTS -	DRAFTER M.OFFI	DATE 11/29/2018	<p><b>MITSUBISHI ELECTRIC</b></p>
<small>PROPRIETARY</small> <small>This document is the property of Mitsubishi Electric Power Products, Inc. and contains proprietary and confidential information which must not be disclosed, used or disclosed other than as expressly authorized by Mitsubishi Electric Power Products, Inc.</small>		APPROVED N.RIEMER	DATE 11/29/2018	
				TITLE OUTLINE 9900CX 1400 KVA
CORE [REFERENCE] DRAWING		DWG. NO.	SHEET 6 OF 6	REV. <b>7</b>
				<b>UD-100572</b>