



MITSUBISHI 9900CX 1050kVA UPS DIRECT CABLE CONFIGURATION

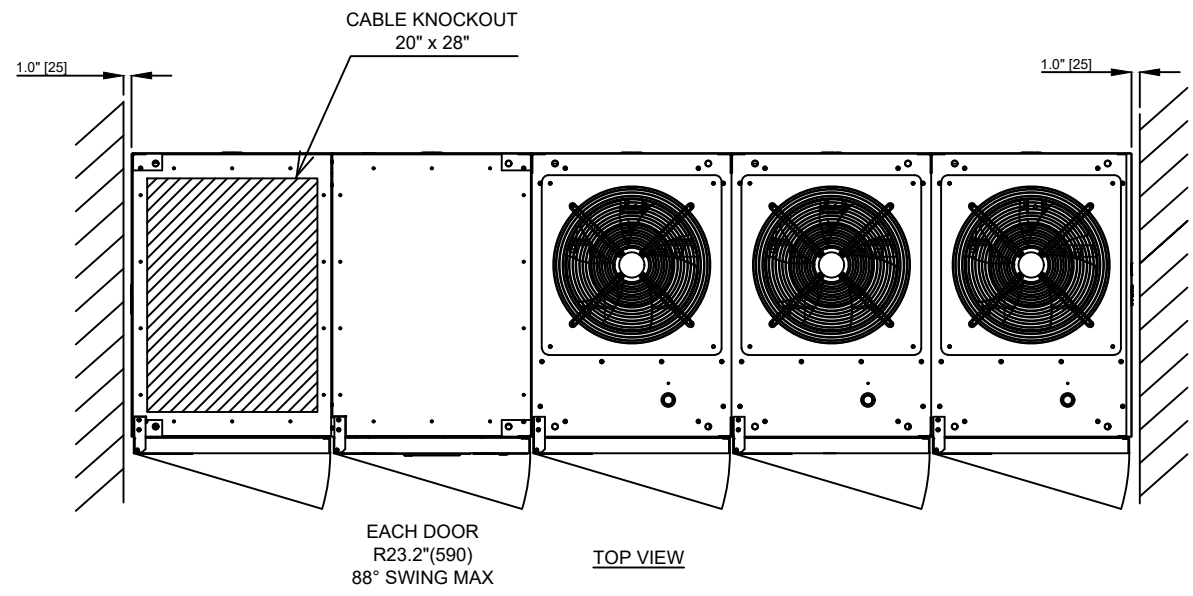
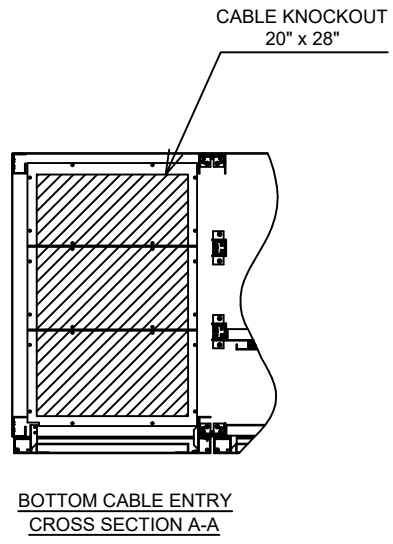
CUSTOMER -
PROJECT NUMBER -
PROJECT LOCATION -

TABLE OF CONTENTS

SHEET NO.	TITLE
01	COVER SHEET
02	OUTLINE
03	BUSS CONNECTIONS
04	SYSTEM CONFIGURATION
05	BUSS CONNECTIONS (OPTIONAL)
06	SINGLE LINE
07	SINGLE LINE
08	
09	
10	
11	
12	
13	
14	
15	

REVISIONS	0. INITIAL RELEASE PER ECN 1316 ZZAJAC 5/29/2019
	1. ADDED CONDUIT ENTRY TO SHEET 2; UPDATED PER ECN 1327 ZZAJAC 6/22/2019
	2. ADDED TYPE RATINGS, AND HEAT REJECTION; UPDATED PER ECN 1370 ZZAJAC 7/11/2019
	2. MODIFIED HMI ON SHEET 2 ZZAJAC 4/17/2020

DIMENSIONS IN: IN [MM]	SCALE - NTS -	DRAFTER Z.ZAJAC	DATE 5/29/2019	 MITSUBISHI ELECTRIC	
<small>PROPRIETARY</small> <small>This document is the property of Mitsubishi Electric Power Products, Inc. and contains proprietary and confidential information which must not be duplicated, used or disclosed other than as expressly authorized by Mitsubishi Electric Power Products, Inc.</small>		APPROVED N.RIEMER	DATE 5/29/2019		
			OUTLINE 9900CX 1050KVA		
CORE [REFERENCE] DRAWING			DWG. NO.	SHEET 1 OF 7	REV.
			UD-100968	3	

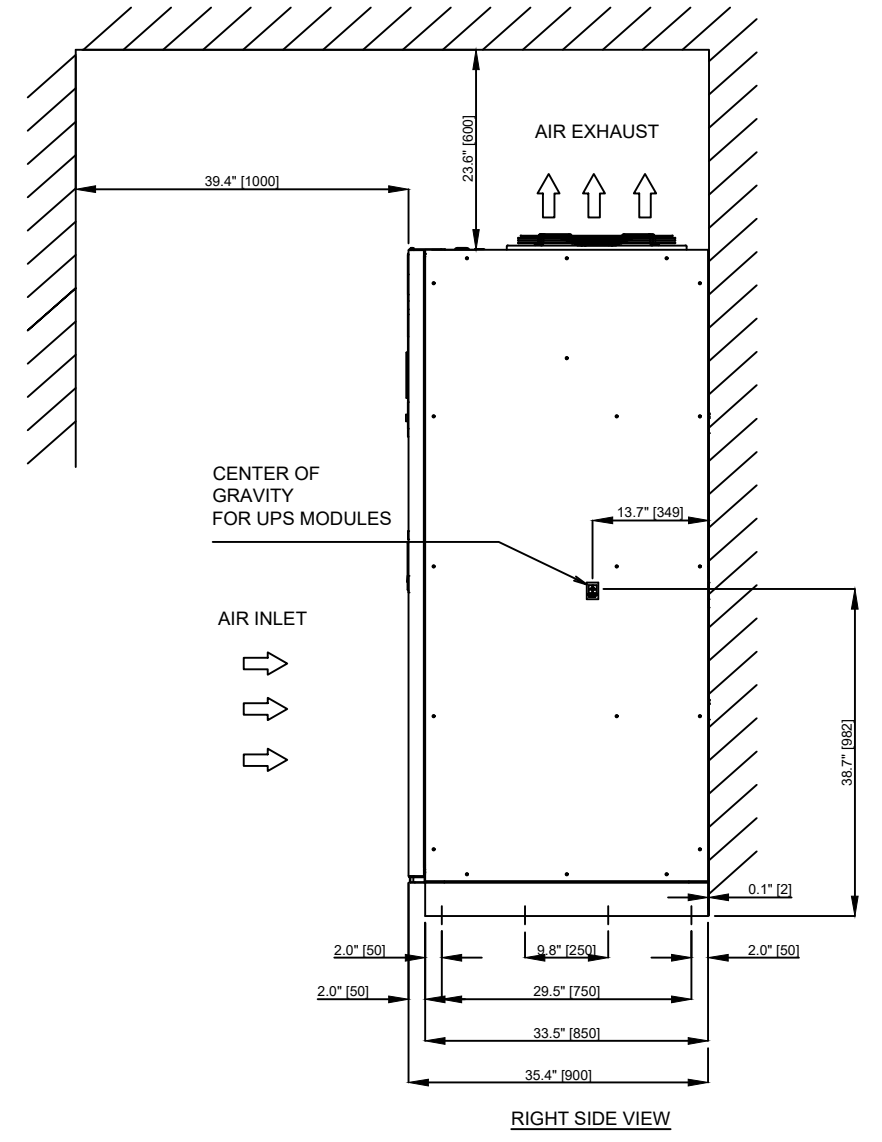
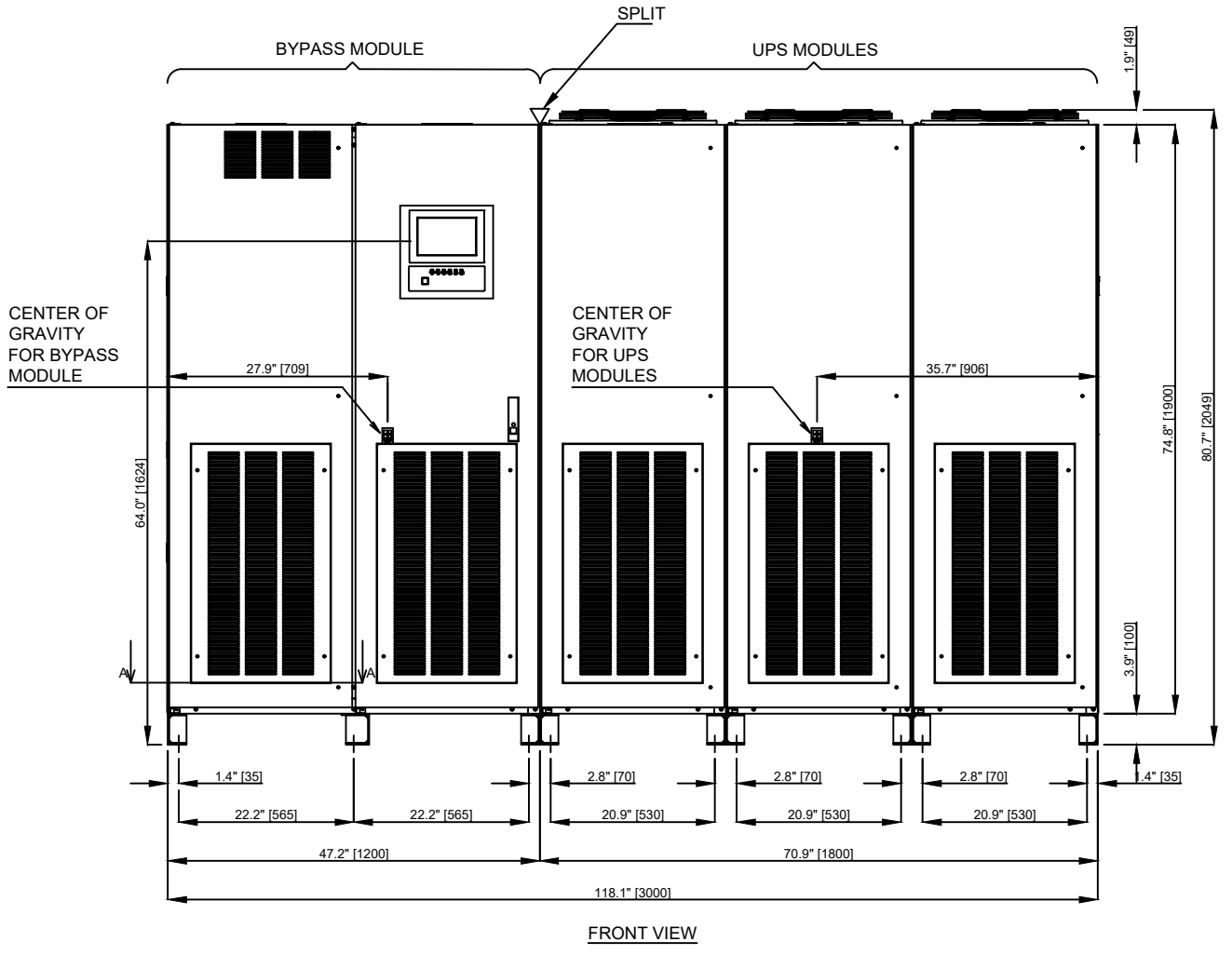
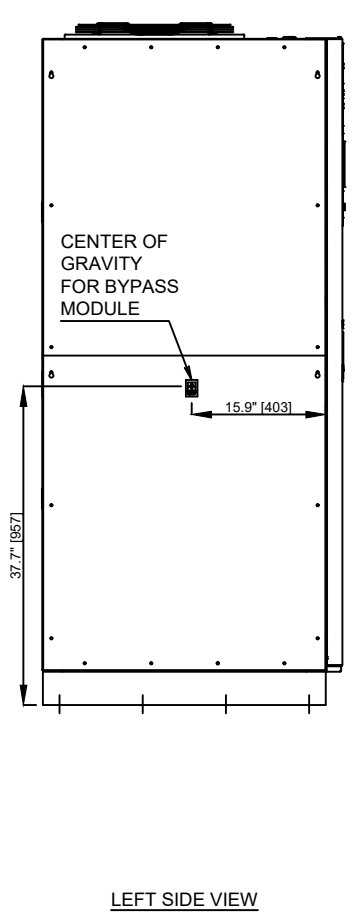


NOTES

1. DIMENSIONS ARE SHOWN IN INCHES" [MILLIMETERS].
2. SIDE SPACE ' 1" [25]' IS NOT REQUIRED WHEN SIDECARS ARE USED.
3. CABINET SHOULD BE MAINTAINED UPRIGHT WITHIN ±15° DURING HANDLING.
4. EACH BASE HAS 2 or 4 x 0.8" [20] DIAMETER HOLES TO FIX UPS ON THE GROUND.
5. APPROXIMATE WEIGHT

UPS MODULES 4,960LBS (2,250kg)
BYPASS MODULE 1,653LBS (750kg)

TYPE: 9900CX
RATING: 1050KVA
HEAT REJECTION: 112.6kBTUs/HOUR (TYPICAL)



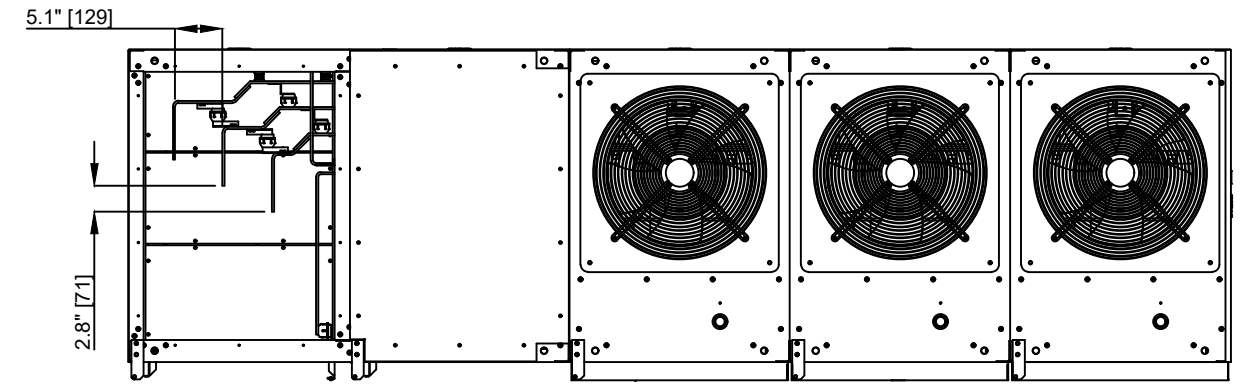
REVISIONS

0. INITIAL RELEASE PER ECN 1316 Z.ZAJAC 5/29/2019
1. ADDED CONDUIT ENTRY TO SHEET 2; UPDATED PER ECN 1327 Z.ZAJAC 6/2/2019
2. ADDED TYPE RATING, AND HEAT REJECTION; UPDATED PER ECN 1370 Z.ZAJAC 7/11/2019
2. MODIFIED HMI ON SHEET 2 Z.ZAJAC 4/17/2020

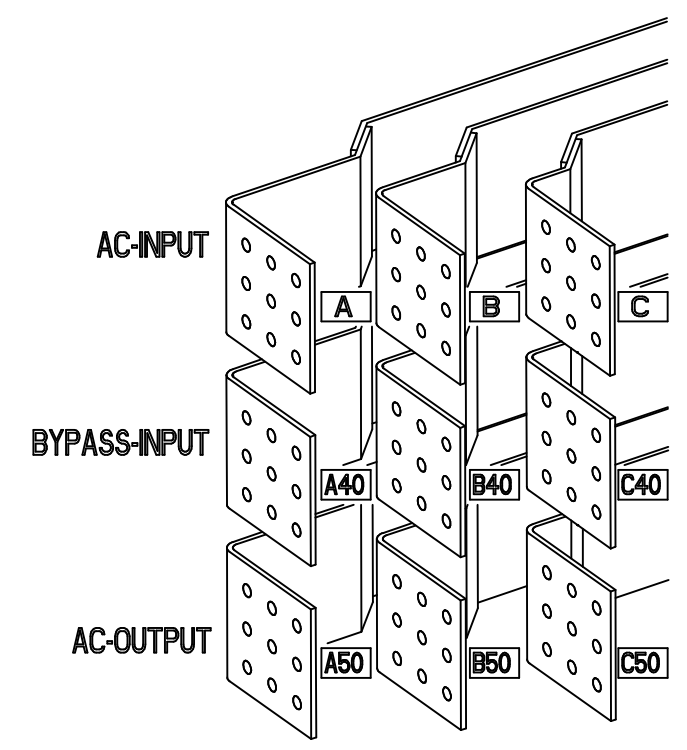
DIMENSIONS IN: IN [MM]	SCALE - NTS -	DRAFTER Z.ZAJAC	DATE 5/29/2019	<p>MITSUBISHI ELECTRIC</p>	
<p>PROPRIETARY</p> <p><small>This document is the property of Mitsubishi Electric Power Products, Inc. and contains proprietary and confidential information which must not be duplicated, used or disclosed other than as expressly authorized by Mitsubishi Electric Power Products, Inc.</small></p>		APPROVED N.RIEMER	DATE 5/29/2019		<p>TITLE</p> <p>OUTLINE</p> <p>9900CX 1050KVA</p>
<p>CORE (REFERENCE) DRAWING</p>				<p>DWG. NO.</p> <p>UD-100968</p>	<p>SHEET 2 OF 7</p> <p>REV.</p> <p>3</p>

NOTES

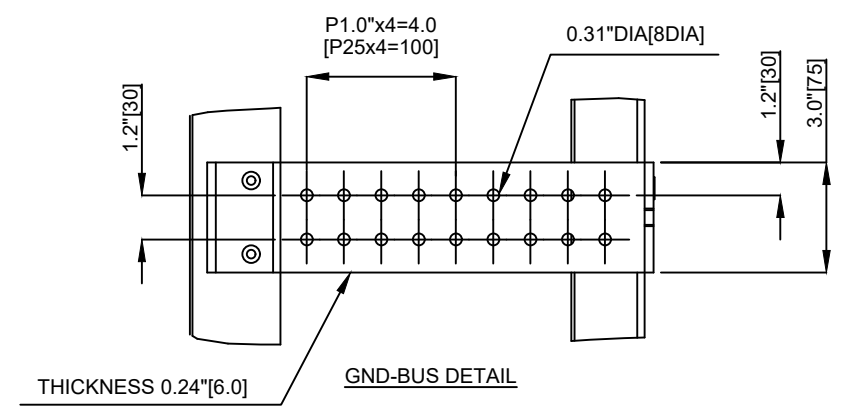
- 6. EXTERNAL WIRES OR CABLES SHALL BE PROVIDED BY CUSTOMERS FOR AC-INPUT, DC-INPUT, BYPASS-INPUT, AND AC-OUTPUT. (OUT OF MITSUBISHI PROVISION.)
- 7. ROTATION OF A, B, AND C PHASE IS CLOCKWISE.



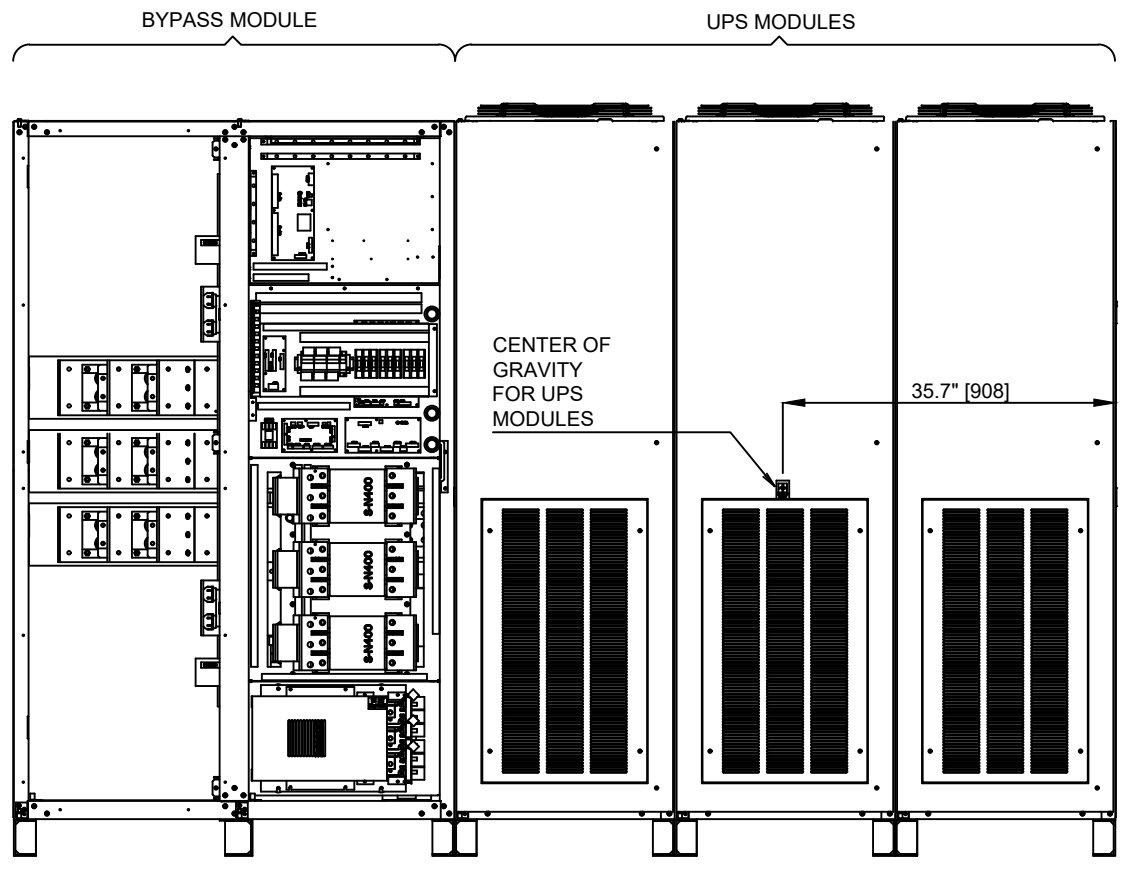
TOP VIEW



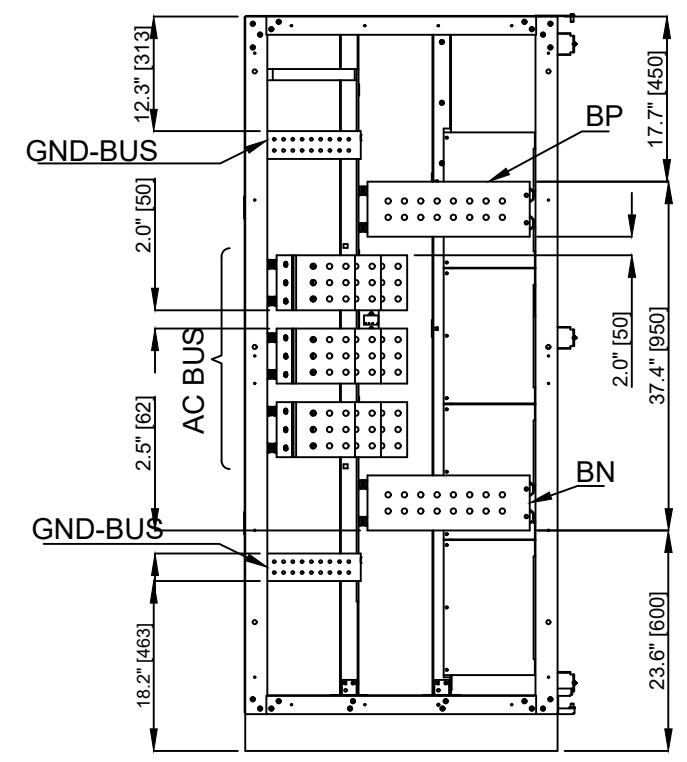
FRONT-LEFT-TOP VIEW OF AC BUSSES



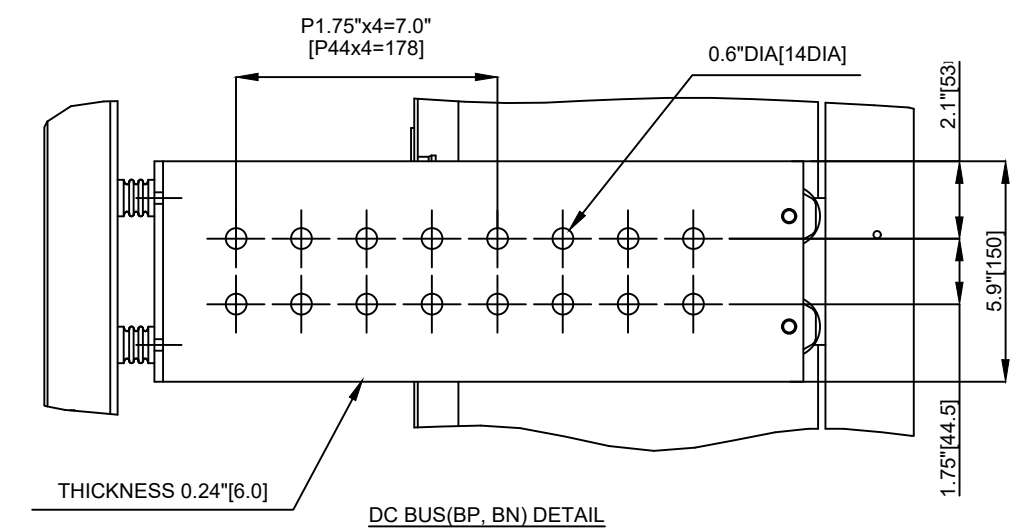
GND-BUS DETAIL



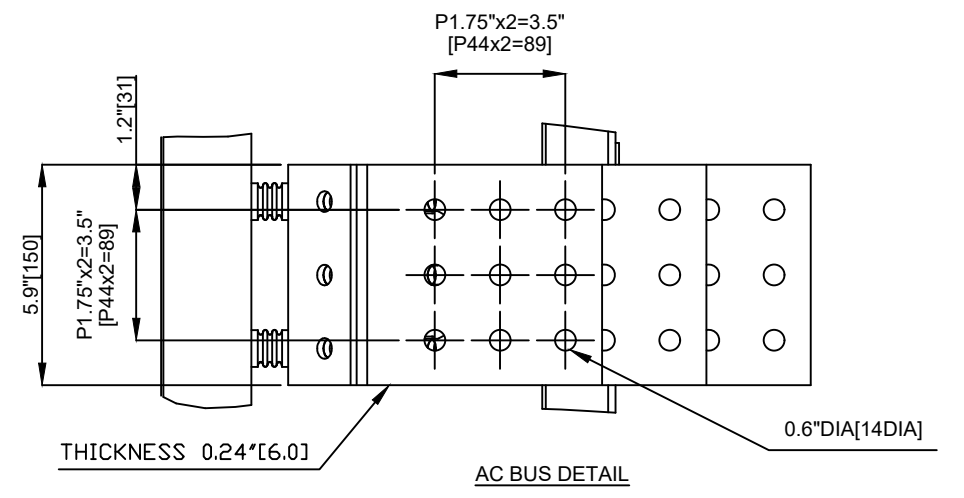
FRONT INSIDE VIEW



LEFT INSIDE VIEW



DC BUS (BP, BN) DETAIL



AC BUS DETAIL

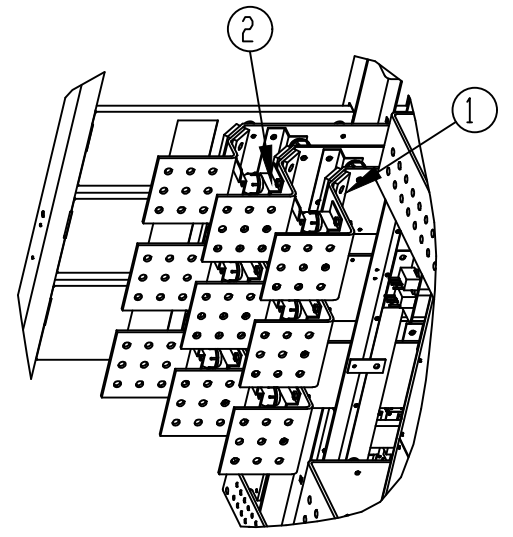
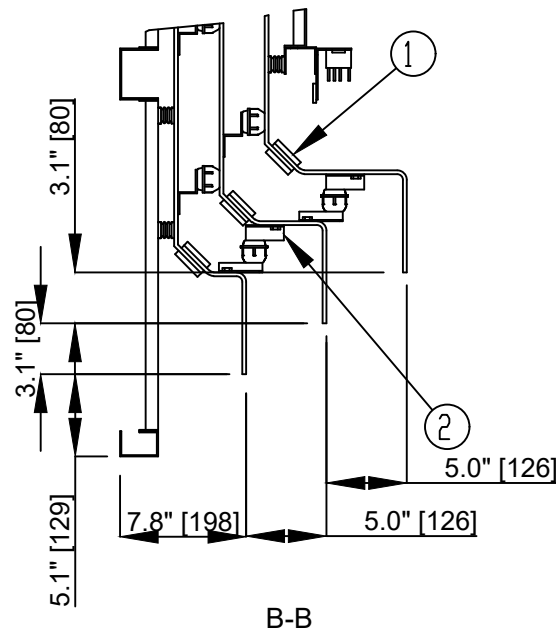
REVISIONS

0. INITIAL RELEASE PER ECN 1316 Z.ZAJAC 5/29/2019
1. ADDED CONDUIT ENTRY TO SHEET 2; UPDATED PER ECN 1327 Z.ZAJAC 6/2/2019
2. ADDED TYPE RATING, AND HEAT REJECTION; UPDATED PER ECN 1370 Z.ZAJAC 7/11/2019
2. MODIFIED HMI ON SHEET 2; Z.ZAJAC 4/17/2020

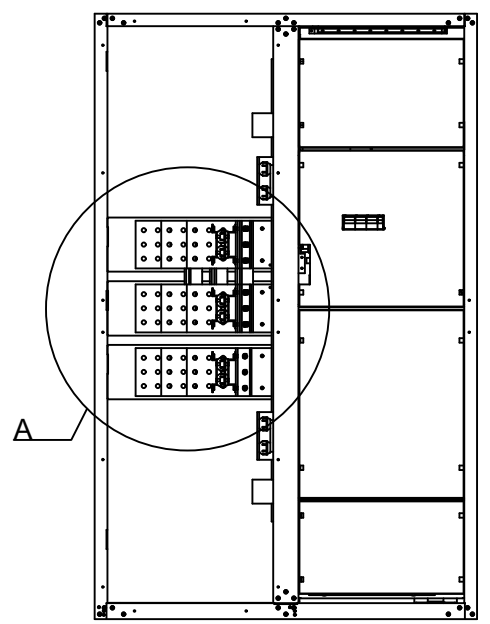
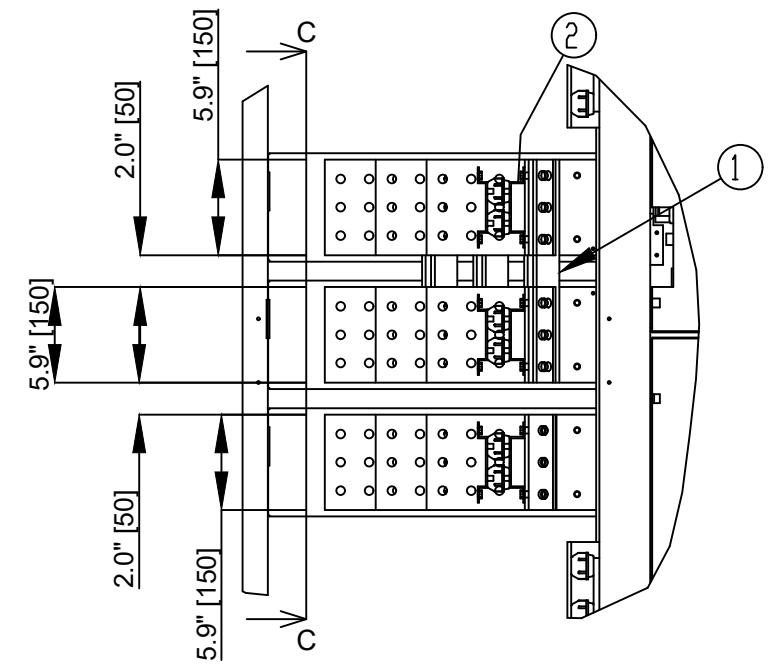
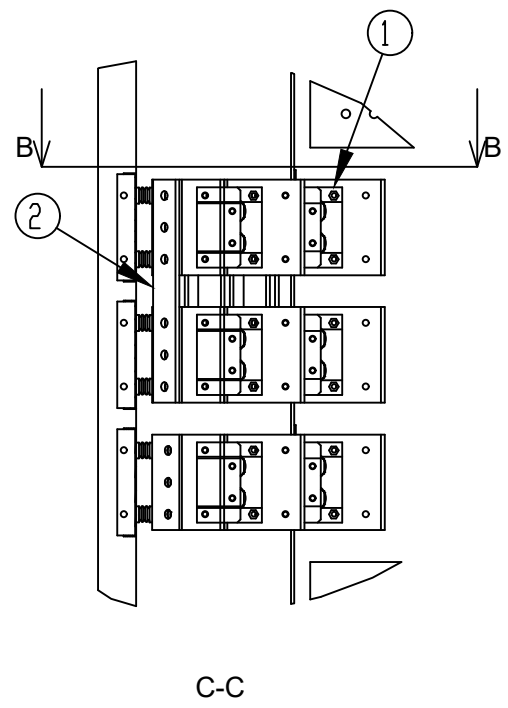
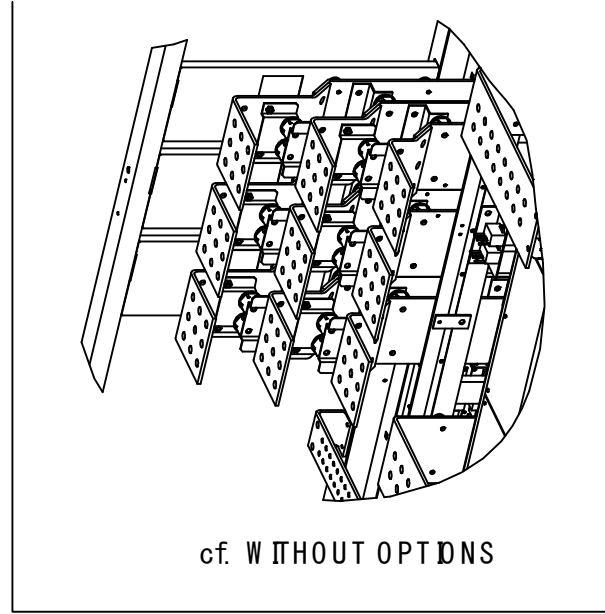
DIMENSIONS IN: IN [MM]	SCALE: - NTS -	DRAFTER: Z.ZAJAC	DATE: 5/29/2019	<p>MITSUBISHI ELECTRIC</p>
<p>PROPRIETARY</p> <p><small>This document is the property of Mitsubishi Electric Power Products, Inc. and contains proprietary and confidential information which must not be duplicated, used or disclosed other than as expressly authorized by Mitsubishi Electric Power Products, Inc.</small></p>		APPROVED: N.RIEMER	DATE: 5/29/2019	
<p>CORE [REFERENCE] DRAWING</p>				<p>DWG. NO. UD-100968</p> <p>SHEET 3 OF 7</p> <p>REV. 3</p>

NOTES:

1. OPTION BUSS PART TO MAKE AC-INPUT AND BYPASS-INPUT SHORT-CIRCUITTED (6PCS) OPTION
2. PANEL PART REQUIRED TO REARRANGE DIRECTION OF AC TERMINALS (6PCS)



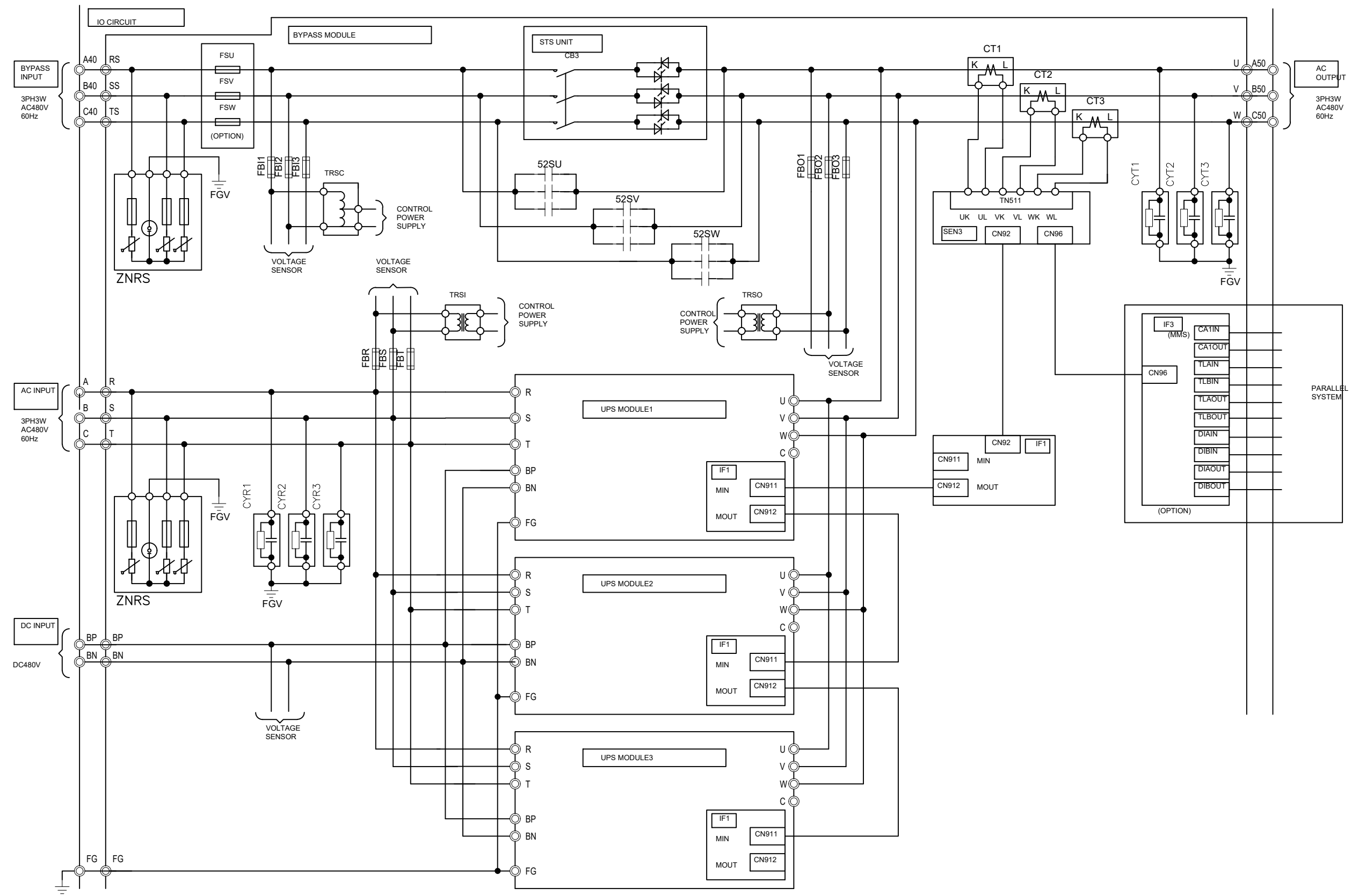
FRONT-LEFT-TOP VIEW OF AC BUSSES



FRONT INSIDE VIEW OF BYPASS MODULE

REVISIONS
0. INITIAL RELEASE PER ECN 1316 Z.ZAJAC 5/29/2019
1. ADDED CONDUIT ENTRY TO SHEET 2; UPDATED PER ECN 1327 Z.ZAJAC 6/22/2019
2. ADDED TYPE RATINGS, AND HEAT REJECTION; UPDATED PER ECN 1370 Z.ZAJAC 7/11/2019
2. MODIFIED HMI ON SHEET 2; Z.ZAJAC 4/17/2020

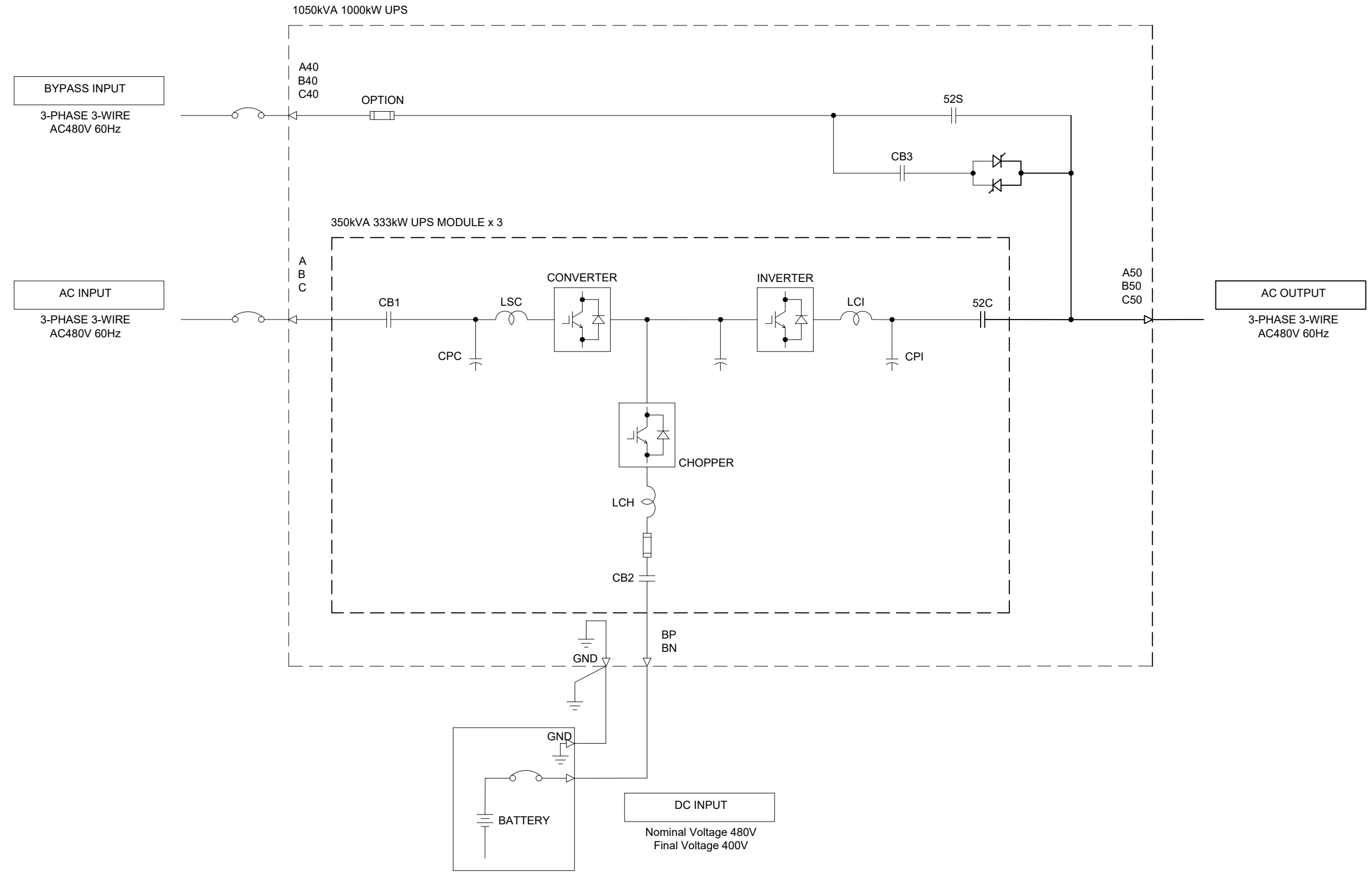
DIMENSIONS IN: IN [MM]	SCALE: - NTS -	DRAFTER: Z.ZAJAC	DATE: 5/29/2019	<p>MITSUBISHI ELECTRIC</p>	
<small>PROPRIETARY</small> <small>This document is the property of Mitsubishi Electric Power Products, Inc. and contains proprietary and confidential information which must not be duplicated, used or disclosed other than as expressly authorized by Mitsubishi Electric Power Products, Inc.</small>		APPROVED: N.RIEMER	DATE: 5/29/2019		<p>TITLE</p> <p>OUTLINE</p> <p>9900CX 1050KVA</p>
CORE [REFERENCE] DRAWING			DWG. NO.	SHEET 4 OF 7	REV.
			UD-100968		3



REVISIONS

- 0. INITIAL RELEASE PER ECN 1316 Z.ZAJAC 5/29/2019
- 1. ADDED CONDUIT ENTRY TO SHEET 2; UPDATED PER ECN 1327 Z.ZAJAC 6/2/2019
- 2. ADDED TYPE RATINGS, AND HEAT REJECTION; UPDATED PER ECN 1370 Z.ZAJAC 7/11/2019
- 2. MODIFIED HMI ON SHEET 2 Z.ZAJAC 4/17/2020

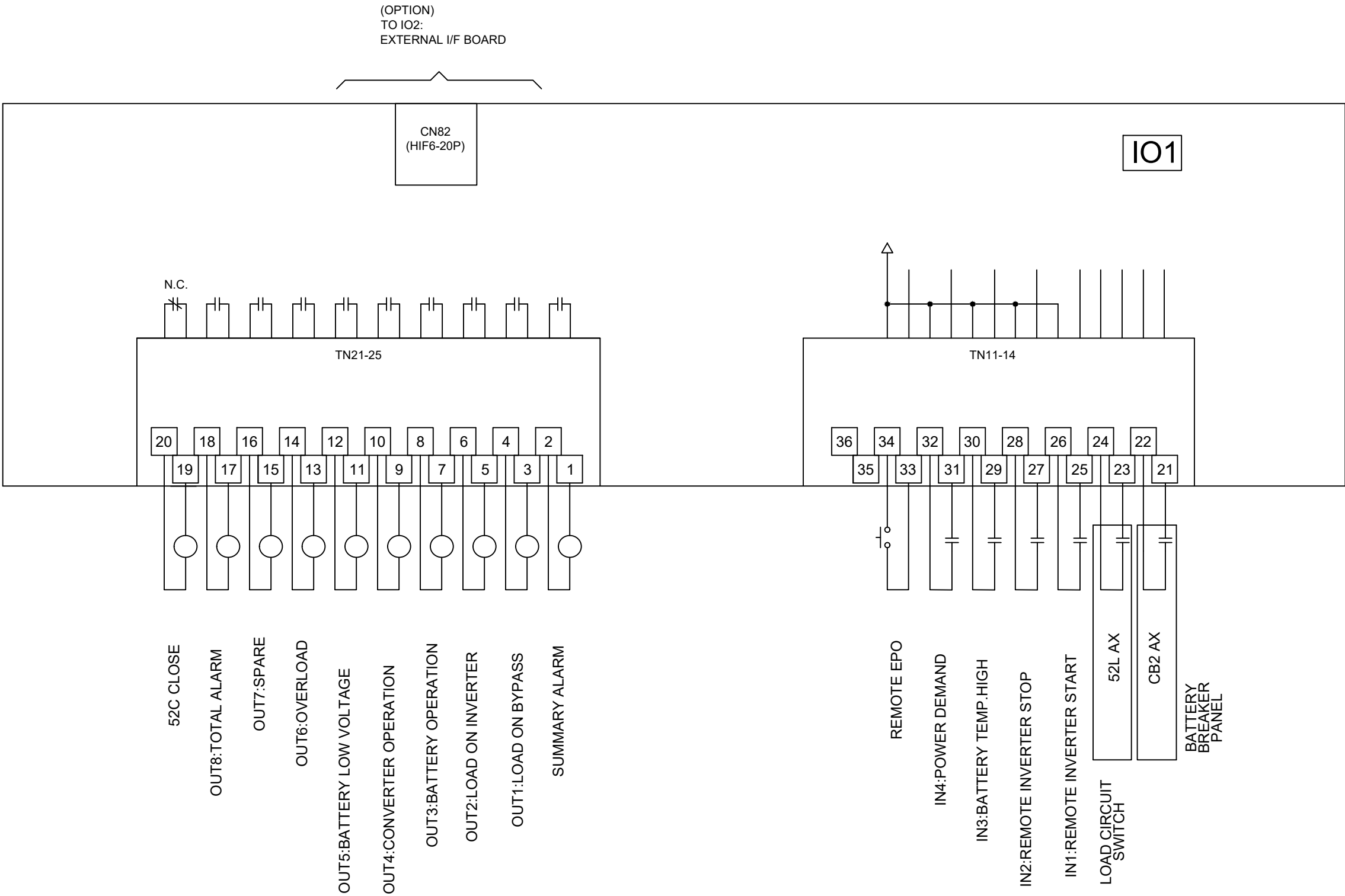
DIMENSIONS IN: IN [MM]	SCALE - NTS -	DRAFTER Z.ZAJAC	DATE 5/29/2019	 MITSUBISHI ELECTRIC OUTLINE 9900CX 1050KVA
PROPRIETARY <small>This document is the property of Mitsubishi Electric Power Products, Inc. and contains proprietary and confidential information which must not be duplicated, used or disclosed other than as expressly authorized by Mitsubishi Electric Power Products, Inc.</small>		APPROVED N.RIEMER	DATE 5/29/2019	
CORE [REFERENCE] DRAWING				TITLE 9900CX 1050KVA DWG. NO. UD-100968 SHEET 5 OF 7 REV. 3



REVISIONS
0. INITIAL RELEASE PER ECN 1316 Z.ZAJAC 5/29/2019
1. ADDED CONDUIT ENTRY TO SHEET 2; UPDATED PER ECN 1327 Z.ZAJAC 6/22/2019
2. ADDED TYPE RATINGS, AND HEAT REJECTION; UPDATED PER ECN 1370 Z.ZAJAC 7/11/2019
2. MODIFIED HIM I ON SHEET 2; Z.ZAJAC 4/17/2020

DIMENSIONS IN: IN [MM]		SCALE: - NTS -		DRAFTER: Z.ZAJAC		DATE: 5/29/2019	
PROPRIETARY				APPROVED: N.RIEMER		DATE: 5/29/2019	
This document is the property of Mitsubishi Electric Power Products, Inc. and contains proprietary and confidential information which must not be duplicated, used or disclosed other than as expressly authorized by Mitsubishi Electric Power Products, Inc.						CORE [REFERENCE] DRAWING	
DWG. NO. UD-100968		SHEET 6 OF 7		REV. 3		TITLE: 9900CX 1050KVA OUTLINE	

MITSUBISHI ELECTRIC	
TITLE: 9900CX 1050KVA OUTLINE	
DWG. NO. UD-100968	
SHEET 6 OF 7	
REV. 3	



REVISIONS

0. INITIAL RELEASE PER ECN 1316 Z.ZAJAC 5/29/2019
1. ADDED CONDUIT ENTRY TO SHEET 2; UPDATED PER ECN 1327 Z.ZAJAC 6/3/2019
2. ADDED TYPE RATINGS, AND HEAT REJECTION; UPDATED PER ECN 1370 Z.ZAJAC 7/11/2019
2. MODIFIED HMI ON SHEET 2; Z.ZAJAC 4/17/2020

DIMENSIONS IN: IN [MM]	SCALE - NTS -	DRAFTER Z.ZAJAC	DATE 5/29/2019	<p>MITSUBISHI ELECTRIC</p>
<p style="text-align: center;">PROPRIETARY</p> <small>This document is the property of Mitsubishi Electric Power Products, Inc. and contains proprietary and confidential information which must not be duplicated, used or disclosed other than as expressly authorized by Mitsubishi Electric Power Products, Inc.</small>		APPROVED N.RIEMER	DATE 5/29/2019	
CORE [REFERENCE] DRAWING				<p>DWG. NO. UD-100968</p> <p>SHEET 7 OF 7</p> <p>REV. 3</p>