

MITSUBISHI 9900D 1.2/1.25MVA UPS OUTLINE DRAWING

CUSTOMER -



PROJECT NUMBER -

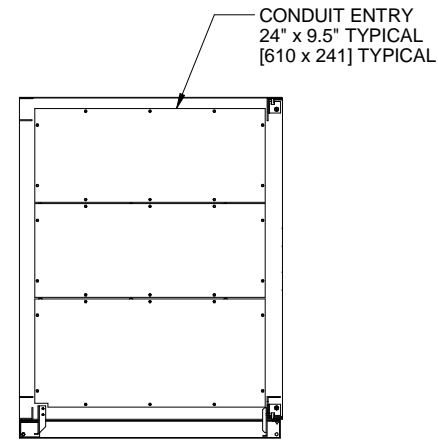
PROJECT LOCATION -

TABLE OF CONTENTS

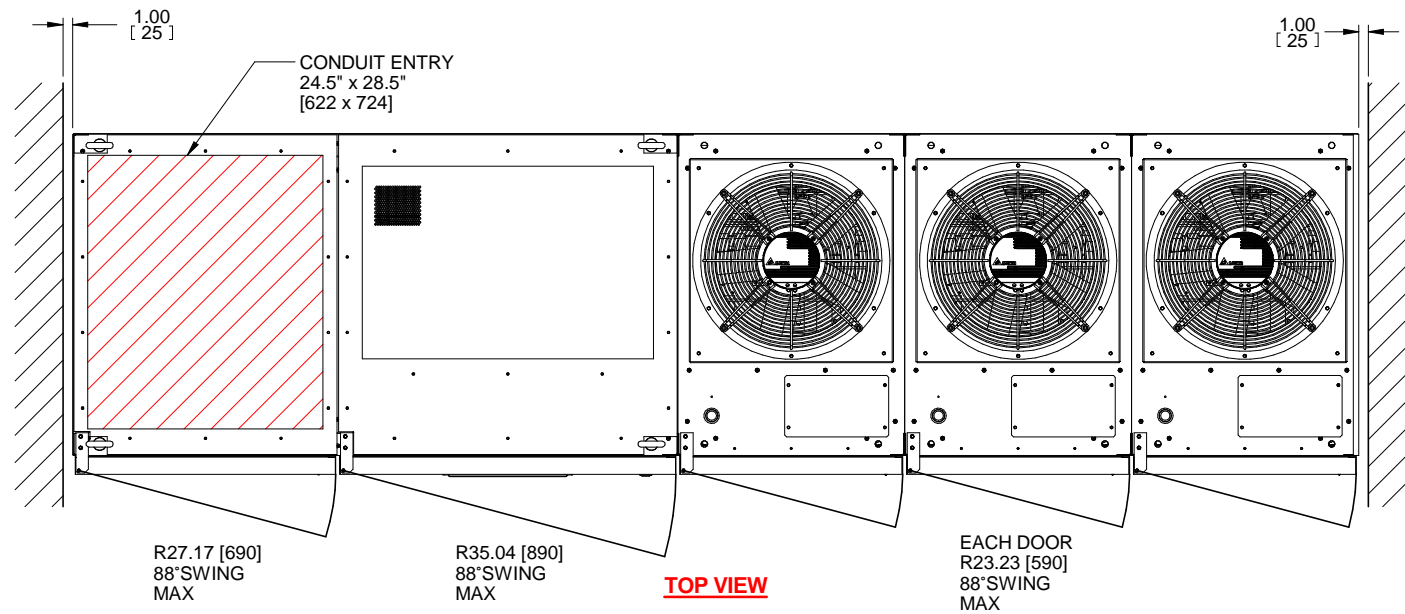
| SHEET NO. | TITLE |
|-----------|----------------------|
| 01 | COVER SHEET |
| 02 | OUTLINE |
| 03 | BUS CONNECTIONS |
| 04 | SYSTEM CONFIGURATION |
| 05 | SINGLE LINE |
| 06 | SINGLE LINE |
| 07 | |
| 08 | |
| 09 | |
| 10 | |
| 11 | |
| 12 | |
| 13 | |
| 14 | |
| 15 | |

| REVISIONS |
|---|
| 0. INITIAL RELEASE Z.ZAJAC 1/25/19 |
| 2. CHANGED TITLE TO 1.2/1.25MVA Z.ZAJAC 12/12/19 |
| 3. UPDATED DIMENSIONS AND VIEWS FOR NEW DOOR J.PRY-SOCK 2/27/20 |
| 4. ADDED UVR CONNECTION TO SHEET 6. J.MOTT 7/10/2020 |
| 5. ADDED BUS HOLE DIAMETER AND THICKNESS DIMENSIONS. R.DURBIN 7/16/2021 |
| 6. ADDED UVR VOLTAGE TO SHEET 6. J.MOTT 3/25/22 |
| 7. UPDATED A40, B40, C40 TO A50, B50, C50 ON SHEET 4. J.MOTT 10/6/22 |

| | | | | |
|---|------------------|---|------------------|--|
| DIMENSIONS IN: IN [MM] (REF) | SCALE - NTS - | DRAFTER Z.ZAJAC | DATE 11/25/19 |  MITSUBISHI ELECTRIC |
| <small>PROPRIETARY</small> <small>This document is the property of Mitsubishi Electric Power Products, Inc. and contains proprietary and confidential information which must not be duplicated, used or disclosed other than as expressly authorized by Mitsubishi Electric Power Products, Inc.</small> | | APPROVED A.WINTER | DATE 11/25/19 | |
| CORE/REFERENCE DRAWING (IF APPLICABLE) | |  | | TITLE 9900D 1.2/1.25MVA OUTLINE DRAWING |
| DWG. NO. UD-101108 | | SHEET 1 OF 6 | | REV. 7 |



SECTION A-A
BOTTOM CONDUIT ENTRY

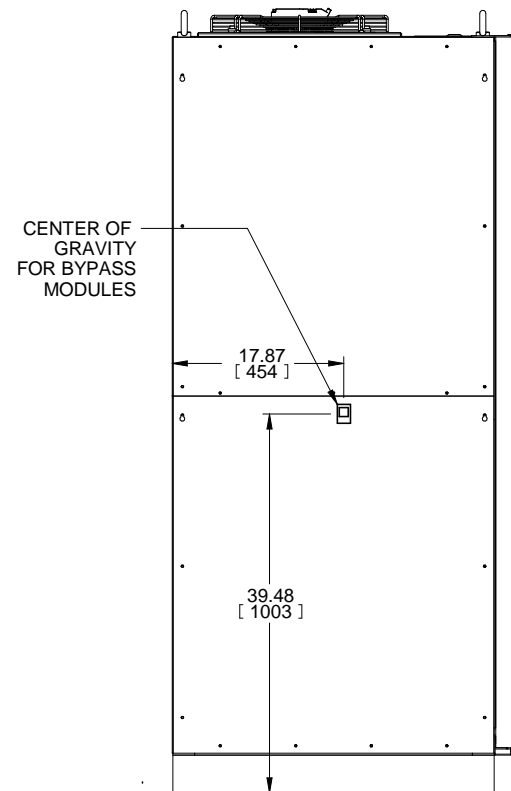


TOP VIEW

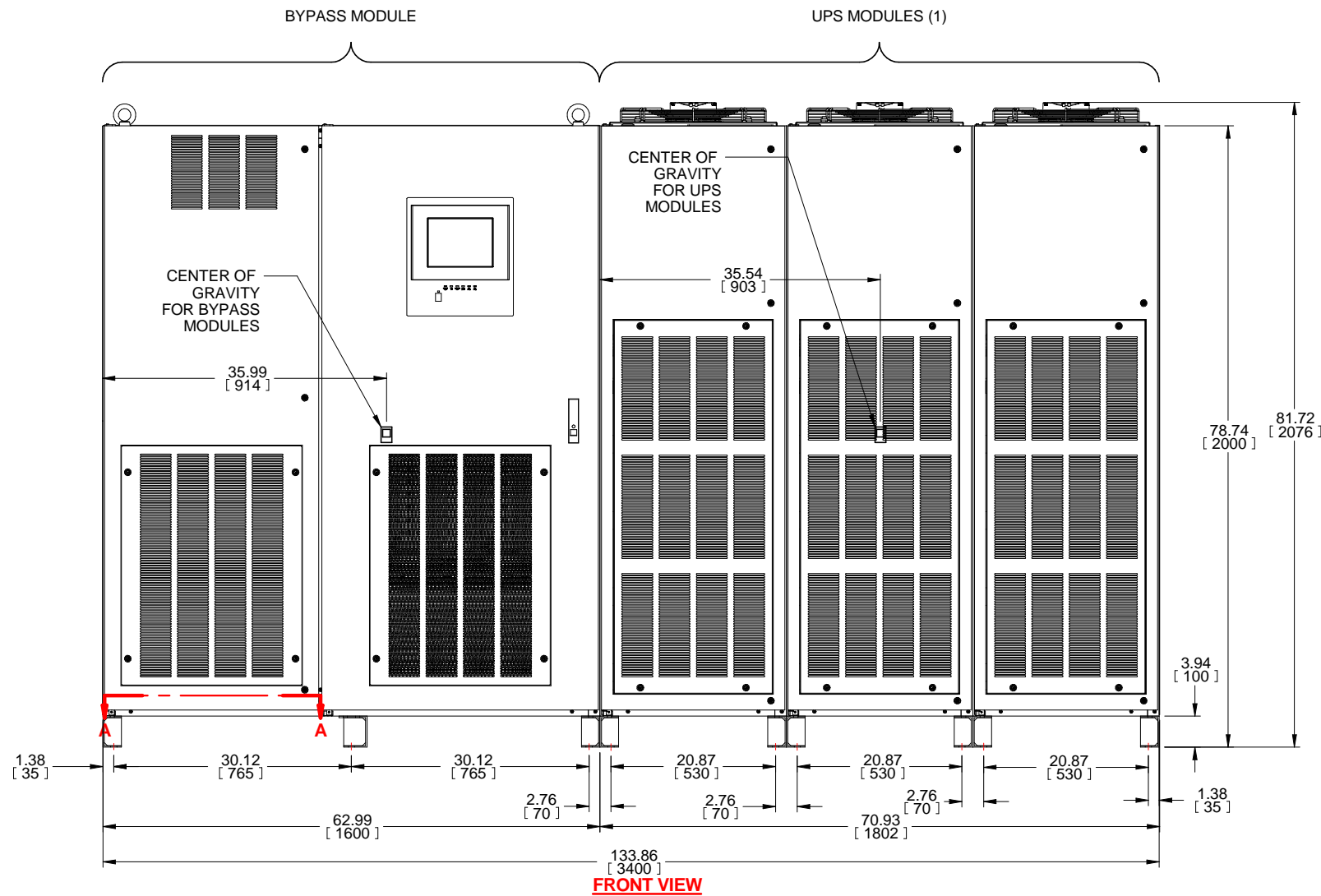
NOTES:

1. DIMENSIONS ARE SHOWN IN INCHES [MILLIMETERS].
2. SIDE SPACE 1" [25] IS NOT REQUIRED WHEN SIDECARS ARE USED.
3. CABINET SHOULD BE MAINTAINED UPRIGHT WITHIN +/- 15° DURING HANDLING.
4. EACH BASE CHANNEL HAS 2 or 4 x 0.8" [20] DIAMETER HOLES TO FIX UPS ON THE GROUND.
5. LIFTING EYES OPTIONAL.
6. APPROXIMATE WEIGHT.

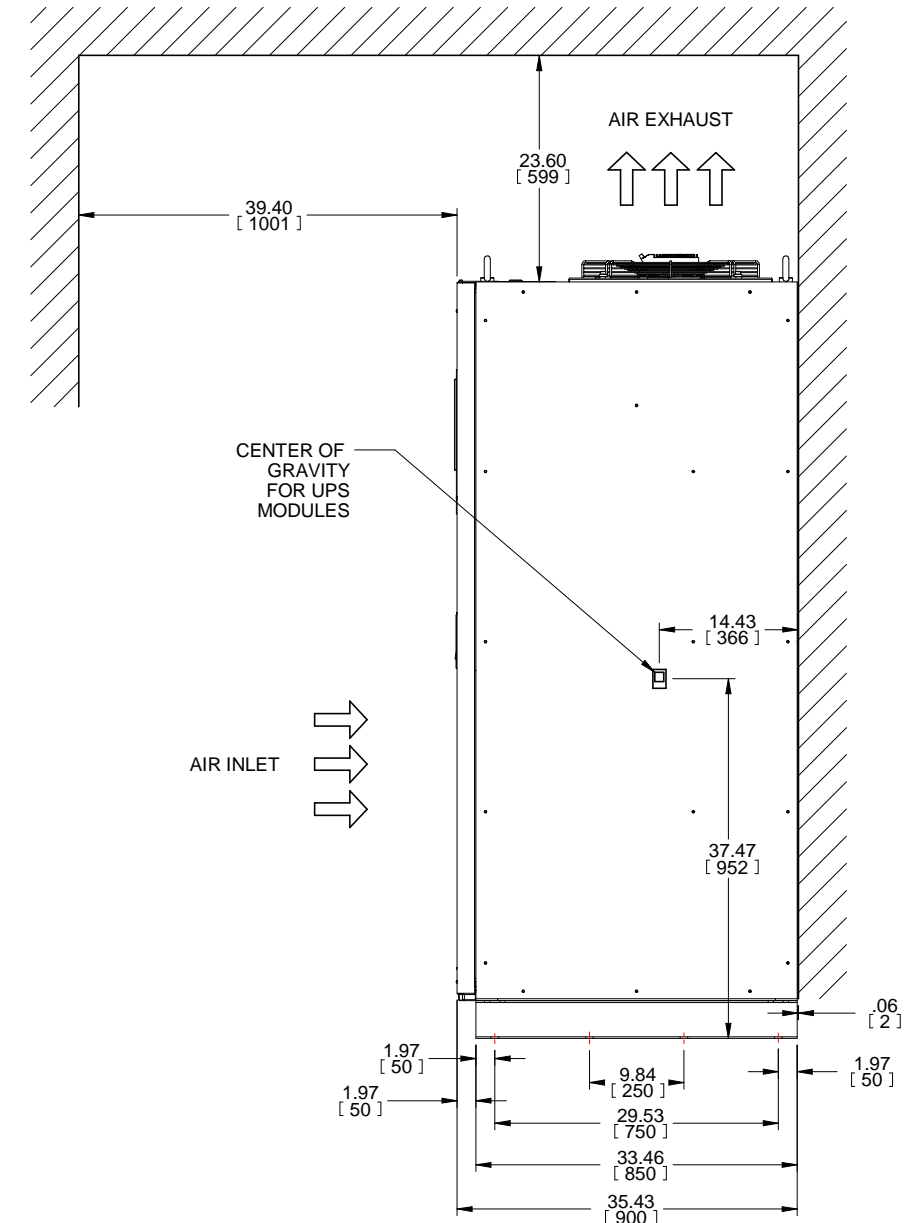
- UPS MODULES 5,200LBS (2,360kg)
- BYPASS MODULE 2,070LBS (940kg)
- 7. FLOOR SHALL BE FLAT AND LEVEL TO 0.3" SURROUNDING UPS MOUNTING.



LEFT SIDE VIEW



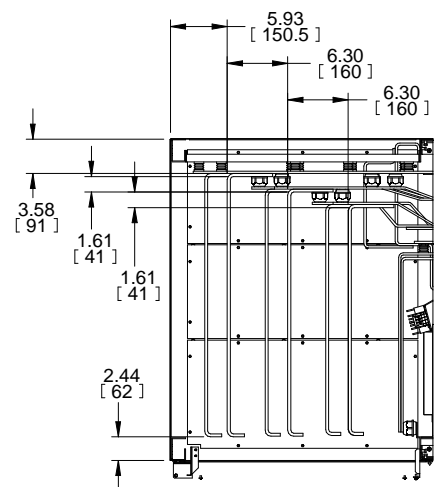
FRONT VIEW



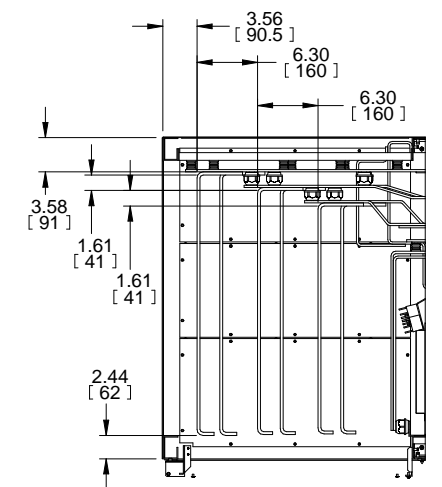
RIGHT SIDE VIEW

| REVISIONS | DATE | DESCRIPTION |
|---|--------------------|-------------|
| 0. INITIAL RELEASE | Z.ZAJAC 11/25/19 | |
| 2. CHANGED TITLE | TO 1.2/1.25MVA | |
| | Z.ZAJAC 12/12/19 | |
| 3. UPDATED DIMENSIONS AND VIEWS FOR NEW DOOR | J.PRY-SOCK 2/27/20 | |
| 4. ADDED UVR CONNECTION TO SHEET 6. | J.MOTT 7/10/2020 | |
| 5. ADDED BUS HOLE DIAMETER AND THICKNESS DIMENSIONS. | R.DURBIN 7/16/2021 | |
| 6. ADDED UVR VOLTAGE TO SHEET 6. | J.MOTT 3/25/22 | |
| 7. UPDATED A40, B40, C40 TO A50, B50, C50 ON SHEET 4. | J.MOTT 10/6/22 | |

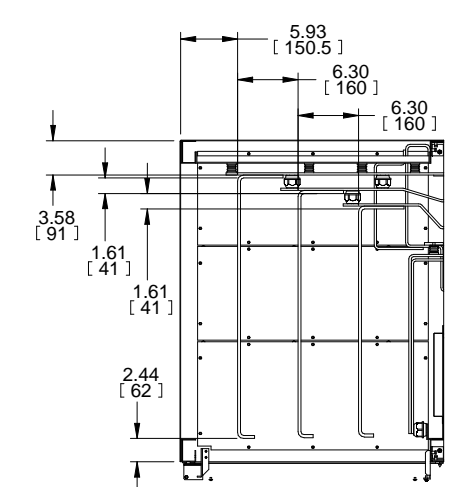
| | | | | |
|---|------------------|---|------------------|--|
| DIMENSIONS IN: IN [MM] (REF) | SCALE - NTS - | DRAFTER Z.ZAJAC | DATE 11/25/19 | |
| <small>PROPRIETARY</small> <small>This document is the property of Mitsubishi Electric Power Products, Inc. and contains proprietary and confidential information which must not be duplicated, used or disclosed other than as expressly authorized by Mitsubishi Electric Power Products, Inc.</small> | | APPROVED A.WINTER | DATE 11/25/19 | |
| <small>CORE/REFERENCE DRAWING (IF APPLICABLE)</small> | | <small>TITLE</small> 9900D 1.2/1.25MVA OUTLINE DRAWING | | <small>SHEET 2 OF 6</small> REV. 7 |
| <small>DWG. NO.</small> UD-101108 | | | | |



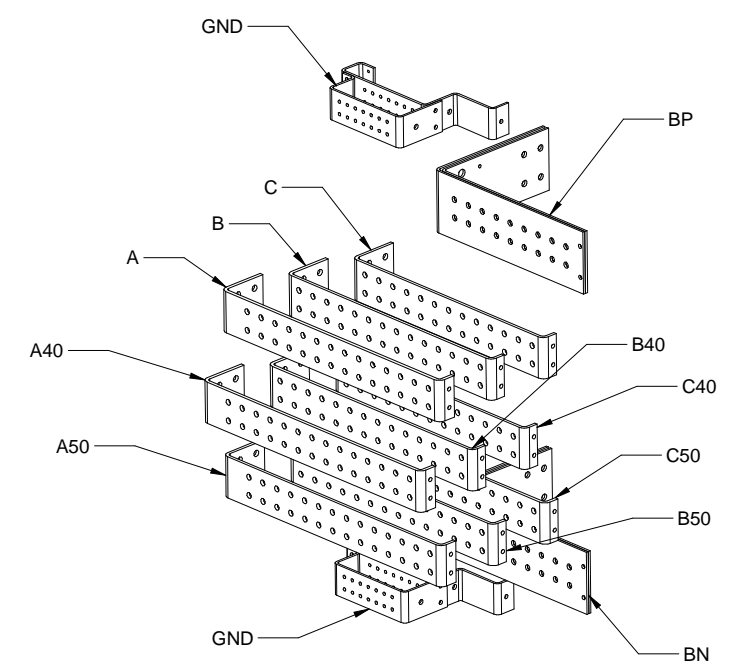
SECTION D-D



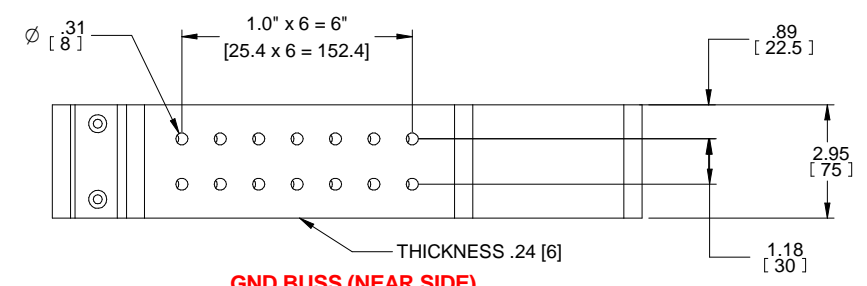
SECTION C-C



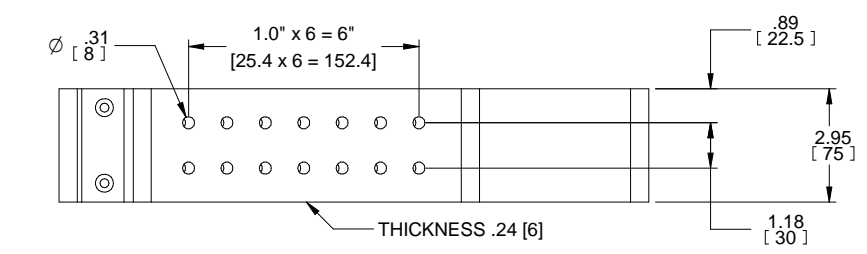
SECTION B-B



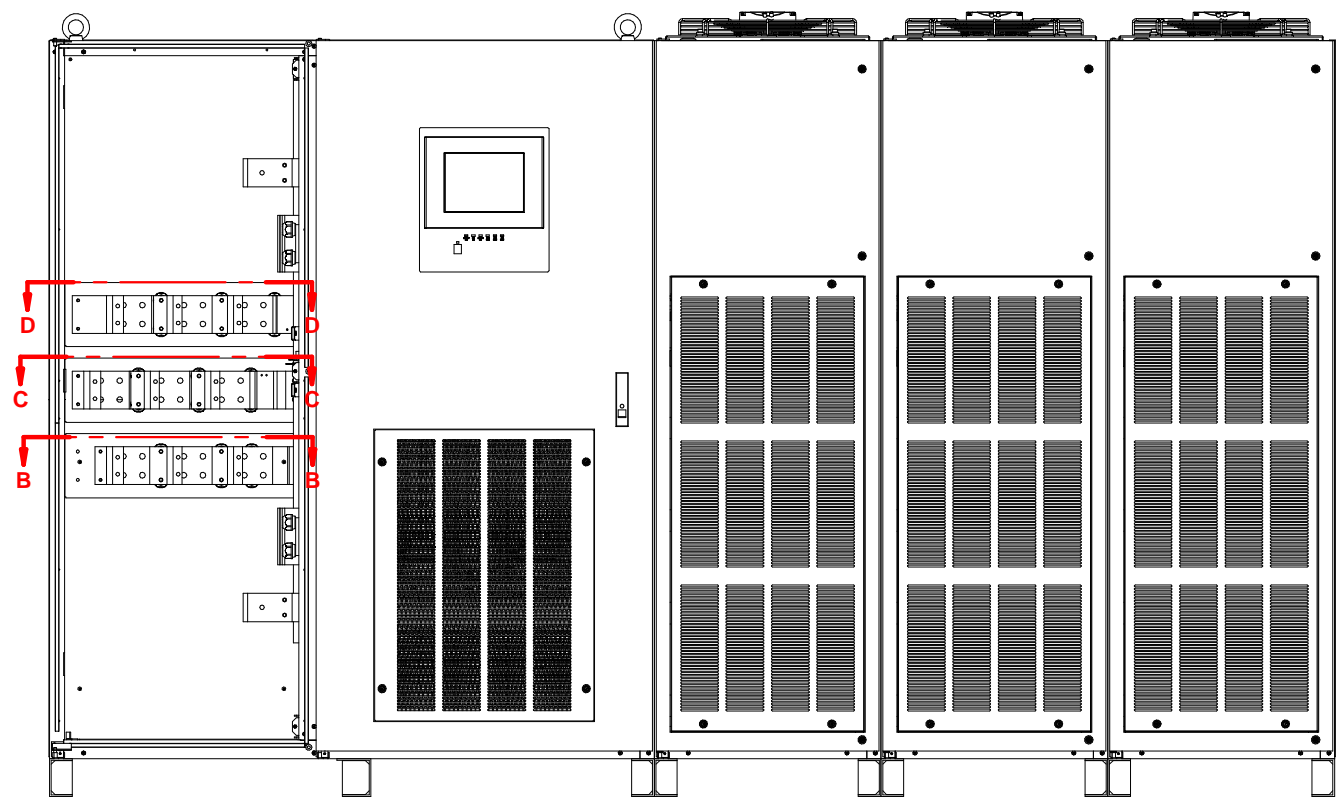
FRON-TOP-LEFT VIEW OF TERMINAL BUSS



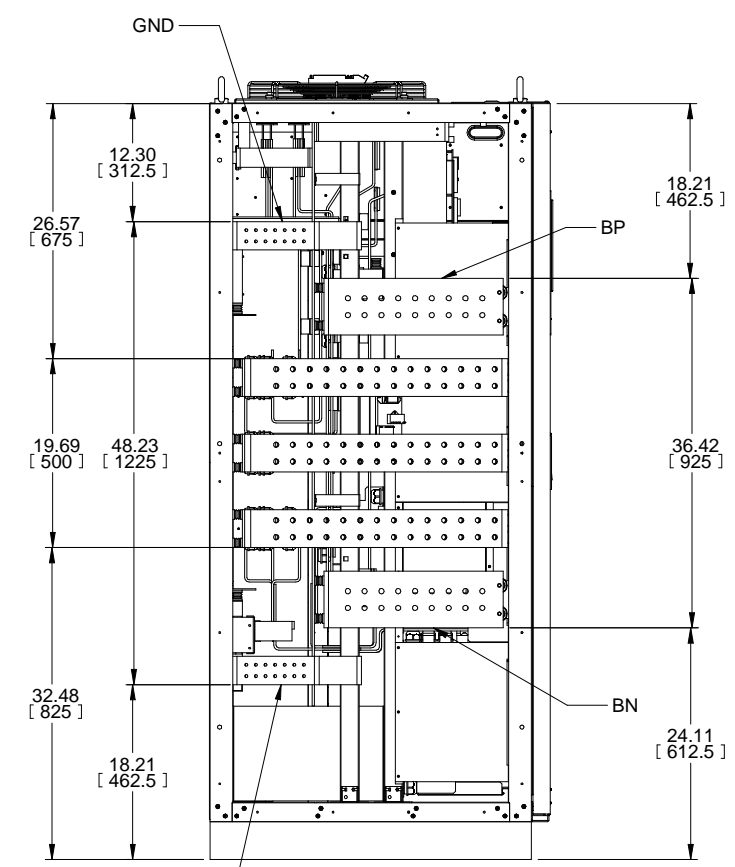
GND BUSS (NEAR SIDE)



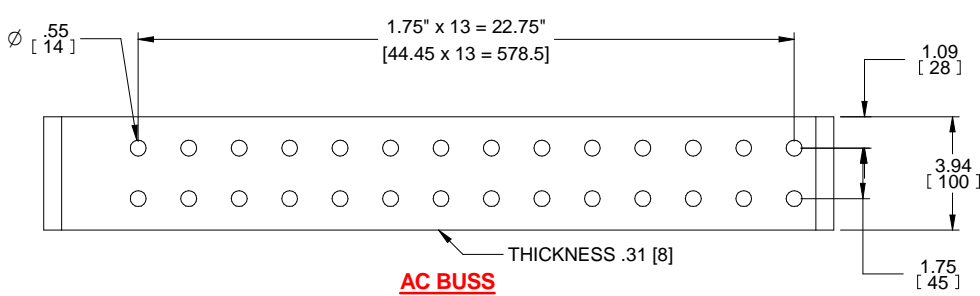
GND BUSS (INSIDE SIDE)



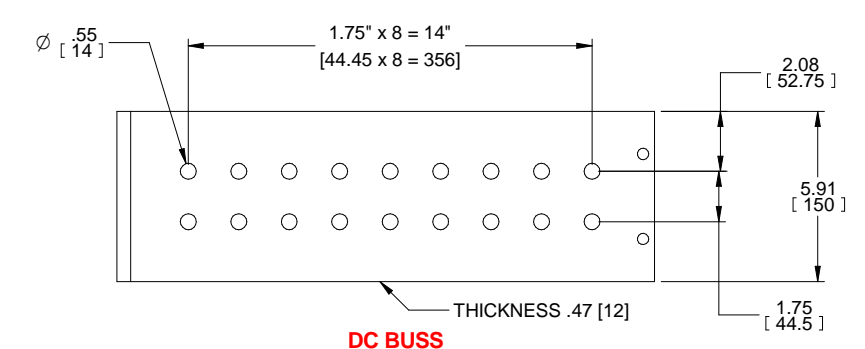
FRONT INSIDE VIEW



LEFT INSIDE VIEW



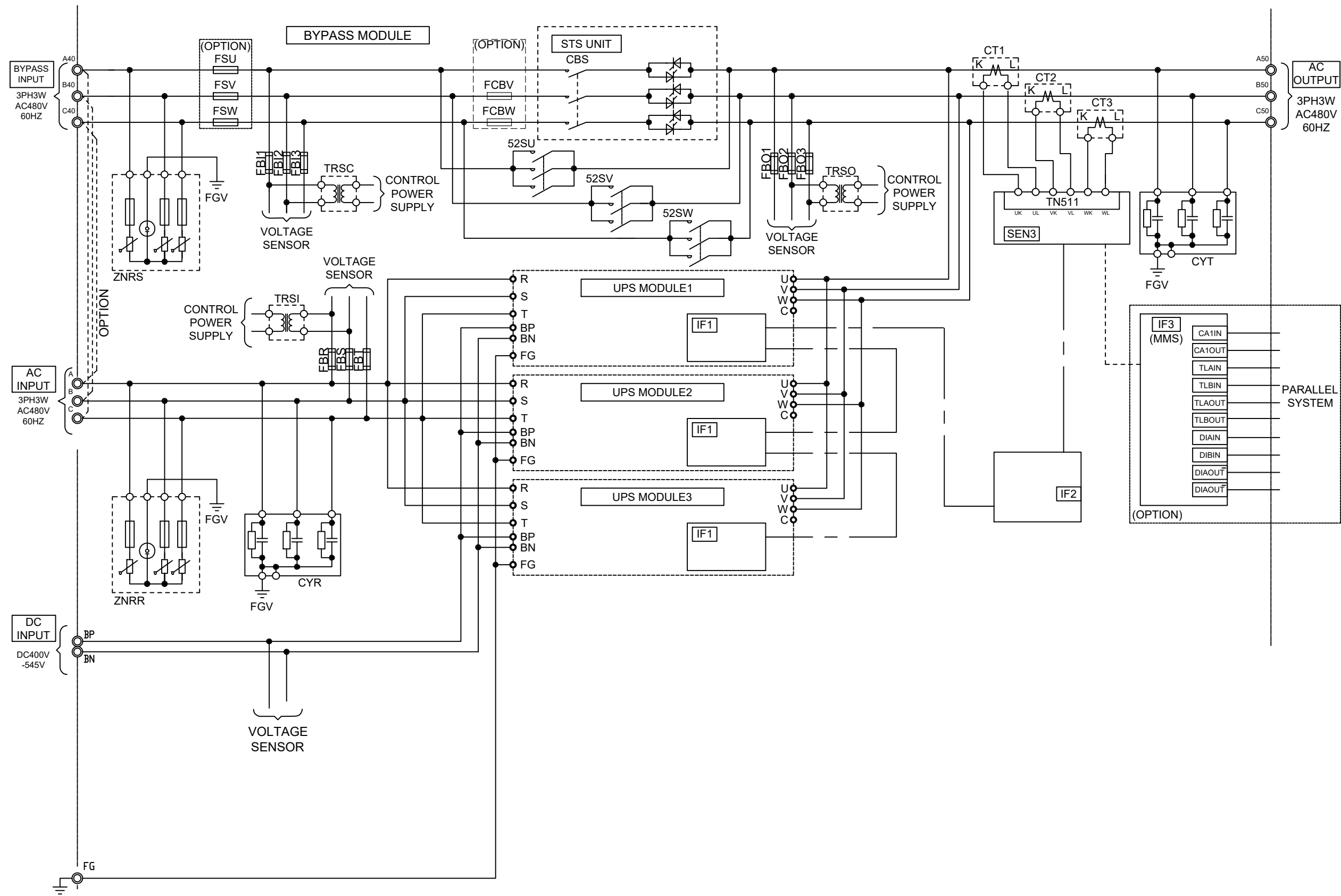
AC BUSS



DC BUSS

| | | | | | | | |
|-----------|-------------------------------------|--|---|--|---|---|--|
| REVISIONS | 0. INITIAL RELEASE Z.ZAJAC 11/25/19 | 2. CHANGED TITLE TO 1.2/1.25MVA Z.ZAJAC 12/12/19 | 3. UPDATED DIMENSIONS AND VIEWS FOR NEW DOOR J.PRY-SOCK 2/27/20 | 4. ADDED UVR CONNECTION TO SHEET 6. J.MOTT 7/10/2020 | 5. ADDED BUS HOLE DIAMETER AND THICKNESS DIMENSIONS. R.DURBIN 7/16/2021 | 6. ADDED UVR VOLTAGE TO SHEET 6. J.MOTT 3/25/22 | 7. UPDATED A40, B40, C40 TO A50, B50, C50 ON SHEET 4. J.MOTT 10/6/22 |
|-----------|-------------------------------------|--|---|--|---|---|--|

| | | | | |
|---|------------------|--|------------------|--|
| DIMENSIONS IN: IN [MM] (REF) | SCALE - NTS - | DRAFTER Z.ZAJAC | DATE 11/25/19 | |
| <small>PROPRIETARY</small> <small>This document is the property of Mitsubishi Electric Power Products, Inc. and contains proprietary and confidential information which must not be duplicated, used or disclosed other than as expressly authorized by Mitsubishi Electric Power Products, Inc.</small> | | APPROVED A.WINTER | DATE 11/25/19 | |
| CORE/REFERENCE DRAWING (IF APPLICABLE) | | TITLE 9900D 1.2/1.25MVA OUTLINE DRAWING | | DWG. NO. UD-101108 SHEET 3 OF 6 REV. 7 |



REVISIONS

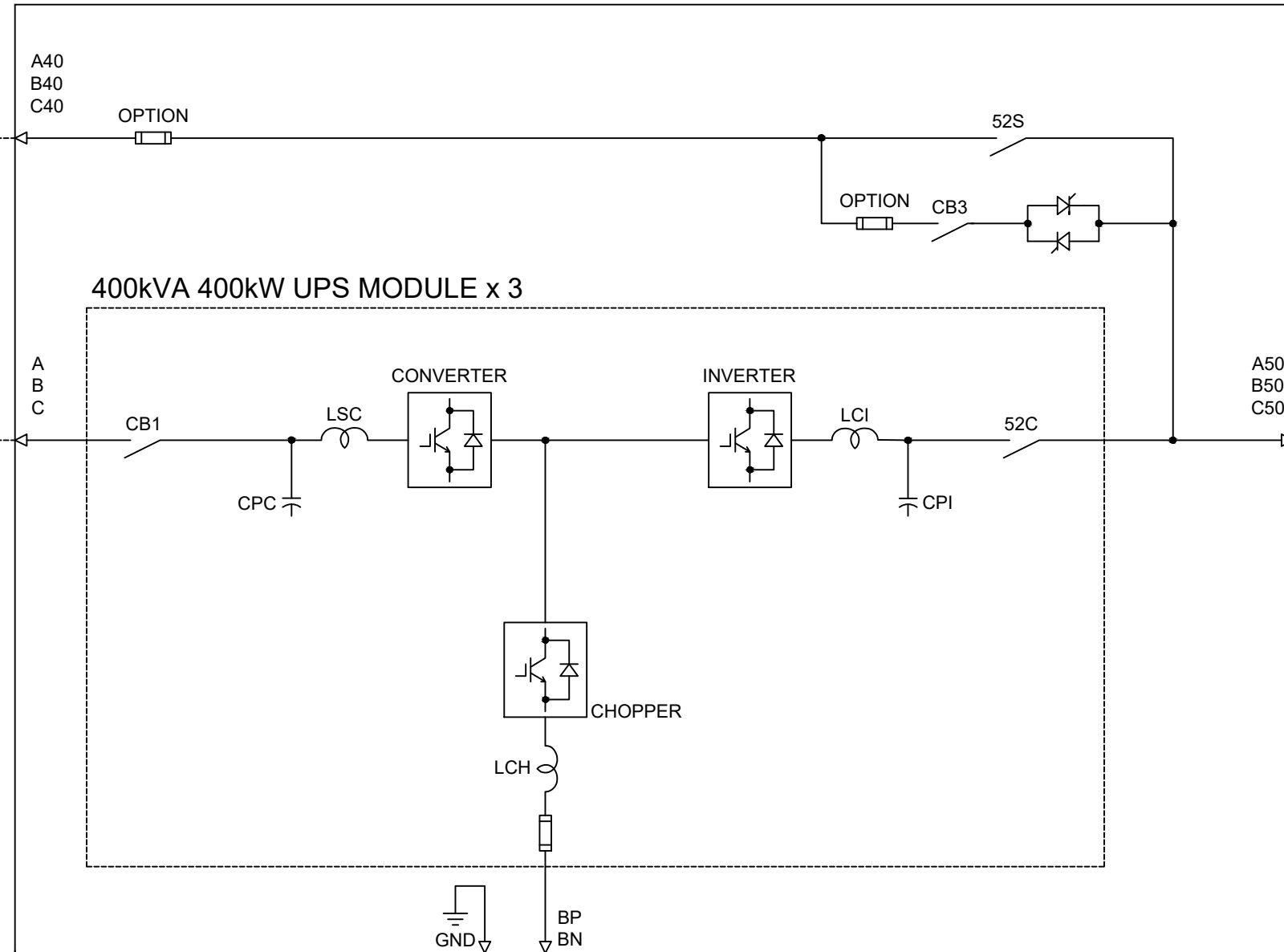
| | |
|----|--|
| 1. | INITIAL RELEASE Z.ZAJAC 11/25/19 |
| 2. | CHANGED TITLE TO 1, 2/1 25/19 Z.ZAJAC 12/12/19 |
| 3. | UPDATED DIMENSIONS AND VALUES FOR NEW L.PRY-SOCK 2/27/20 |
| 4. | ADDED D.V.R. CONNECTION TO SHEET 6 J.MOTT 7/10/2020 |
| 5. | ADDED BUS HOLE THICKNESS AND DIMENSIONS R.DURBIN 7/18/21 |
| 6. | ADDED 24VDC TO URY ON SHEET 6, J.MOTT 3/25/2022 |
| 7. | UPDATED A40, B40, C40 TO A50, B50, C50 ON SHEET 4, J.MOTT 10/6/22 |

| | | | | |
|--|------------------|----------------------|--------------------|---|
| DIMENSIONS IN: IN [MM] | SCALE - NTS - | DRAFTER Z.ZAJAC | DATE 11/25/2019 | <p>MITSUBISHI ELECTRIC</p> |
| <p>PROPRIETARY</p> <small>This document is the property of Mitsubishi Electric Power Products, Inc. and contains proprietary and confidential information which must not be duplicated, used or disclosed other than as expressly authorized by Mitsubishi Electric Power Products, Inc.</small> | | APPROVED A.WINTER | DATE 11/25/2019 | |
| CORE [REFERENCE] DRAWING | | | | <p>TITLE 9900D 1200KVA OUTLINE DRAWING</p> <p>DWG. NO. SHEET 4 OF 6 REV. UD-101108 7</p> |

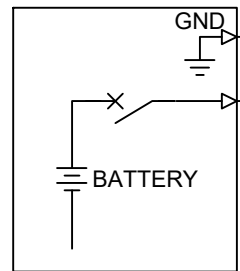
1200KVA/1250KVA UPS MODULE

BYPASS INPUT
3-PHASE 3-WIRE
AC480V 60HZ

AC INPUT
3-PHASE 3-WIRE
AC480V 60HZ



AC OUTPUT
3-PHASE 3-WIRE
AC480V 60HZ



DC INPUT
NOMINAL VOLTAGE 480V
FINAL VOLTAGE 400V
400V/420V(1250KVA)

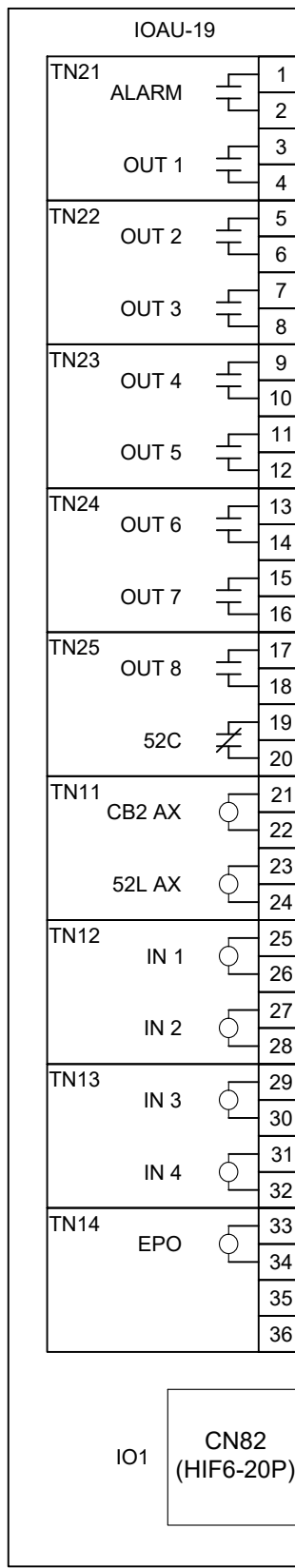
REVISIONS

| |
|---|
| 0. INITIAL RELEASE Z.ZAJAC 11/25/19 |
| 1. CHANGED TITLE TO 1, 211 251VA Z.ZAJAC 12/12/19 |
| 2. UPDATED DIMENSIONS AND VIEWS FOR NEW DIMS J.PRY-SOCK 2/27/20 |
| 3. ADDED DWR CONNECTION TO SHEET 6 J.MOTT 7/10/2020 |
| 4. ADDED BUS HOLE THICKNESS AND DIMENSIONS R.DURBIN 7/16/21 |
| 5. ADDED 24VDC TO URY ON SHEET 6. J.MOTT 3/25/2022 |
| 6. UPDATED A40, B40, C40 TO A50, B50, C50 ON SHEET 4. J.MOTT 10/6/22 |

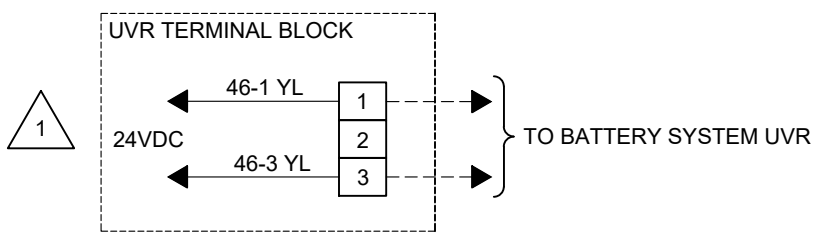
| | | | | | | |
|---|------------------|----------------------|--------------------|---------------------------------------|--|------------------|
| DIMENSIONS IN: IN [MM] | SCALE - NTS - | DRAFTER Z.ZAJAC | DATE 11/25/2019 | <p>MITSUBISHI ELECTRIC</p> | | |
| <p>PROPRIETARY</p> <p><small>This document is the property of Mitsubishi Electric Power Products, Inc. and contains proprietary and confidential information which must not be duplicated, used or disclosed other than as expressly authorized by Mitsubishi Electric Power Products, Inc.</small></p> | | APPROVED A.WINTER | DATE 11/25/2019 | | TITLE 9900D 1200KVA OUTLINE DRAWING | |
| CORE [REFERENCE] DRAWING | | | | DWG. NO. | SHEET 5 OF 6 | REV. 7 |
| | | | | UD-101108 | | |

| I/O ASSIGNMENTS | |
|-----------------|-----------------------|
| ALARM | SUMMARY ALARM |
| *OUT 1 | LOAD ON BYPASS |
| *OUT 2 | LOAD ON INVERTER |
| *OUT 3 | BATTERY OPERATION |
| *OUT 4 | CONVERTER OPERATION |
| *OUT 5 | BATTERY LOW VOLTAGE |
| *OUT 6 | OVERLOAD |
| *OUT 7 | SPARE |
| *OUT 8 | TOTAL ALARM |
| 52C | 52C CLOSED |
| CB2 AX | BATTERY BREAKER PANEL |
| 52L AX | LOAD CIRCUIT SWITCH |
| *IN 1 | REMOTE INVERTER START |
| *IN 2 | REMOTE INVERTER STOP |
| *IN 3 | BATTERY TEMP. HIGH |
| *IN 4 | POWER DEMAND |
| EPO | REMOTE EPO |
| 35/36 | DO NOT USE |

*USER PROGRAMMABLE INPUT/OUTPUT



(OPTION)
TO IO2:
EXTERNAL I/O BOARD



1. UNITS THAT DO NOT INCLUDE AN INTERNAL CB2 CONTACTOR
MUST USE A 24VDC UVR WITH THE BATTERY CABINET CIRCUIT BREAKER.

| REVISIONS |
|---|
| 0. INITIAL RELEASE Z.ZAJAC 11/25/19 |
| 1. CHANGED TITLE TO 1.21.25MVA Z.ZAJAC 12/12/19 |
| 2. UPDATED DIMENSIONS AND VALUES FOR NEW L.PRY-SOCK 2/27/20 |
| 3. ADDED UVR CONNECTION TO SHEET 6 J.MOTT 7/10/2020 |
| 4. ADDED BUS HOLE THICKNESS AND DIMENSIONS R.DURBIN 7/18/21 |
| 5. ADDED 24VDC TO UVR ON SHEET 6. J.MOTT 3/25/2022 |
| 6. UPDATED A40, B40, C40 TO A50, B50, C50 ON SHEET 4. J.MOTT 10/6/22 |

| | | | | |
|---|------------------|----------------------|--|---------------------------------------|
| DIMENSIONS IN: IN [MM] | SCALE - NTS - | DRAFTER Z.ZAJAC | DATE 11/25/2019 | <p>MITSUBISHI ELECTRIC</p> |
| <small>PROPRIETARY</small> <small>This document is the property of Mitsubishi Electric Power Products, Inc. and contains proprietary and confidential information which must not be duplicated, used or disclosed other than as expressly authorized by Mitsubishi Electric Power Products, Inc.</small> | | APPROVED A.WINTER | DATE 11/25/2019 | |
| CORE (REFERENCE) DRAWING | | | TITLE 9900D 1200KVA OUTLINE DRAWING | DWG. NO. UD-101108 |
| | | | | SHEET 6 OF 6 REV. 7 |