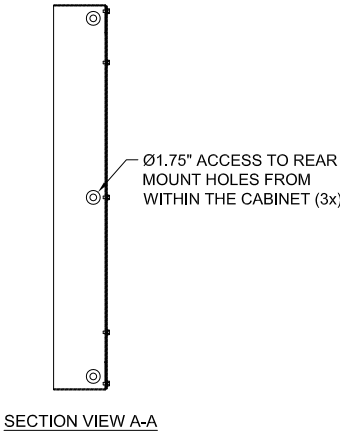
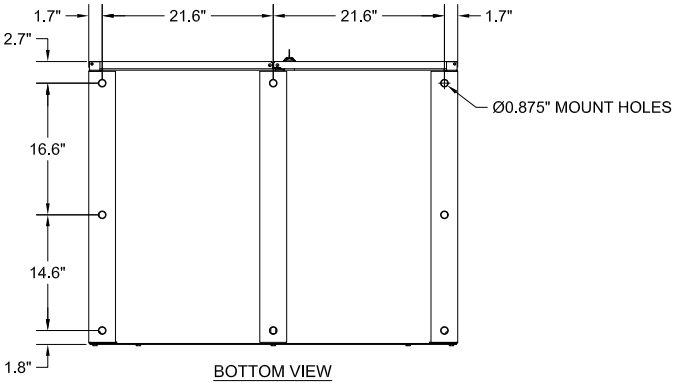
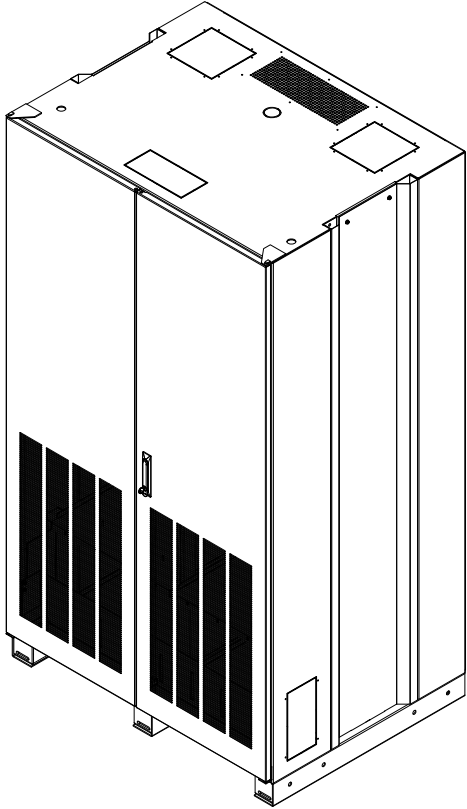
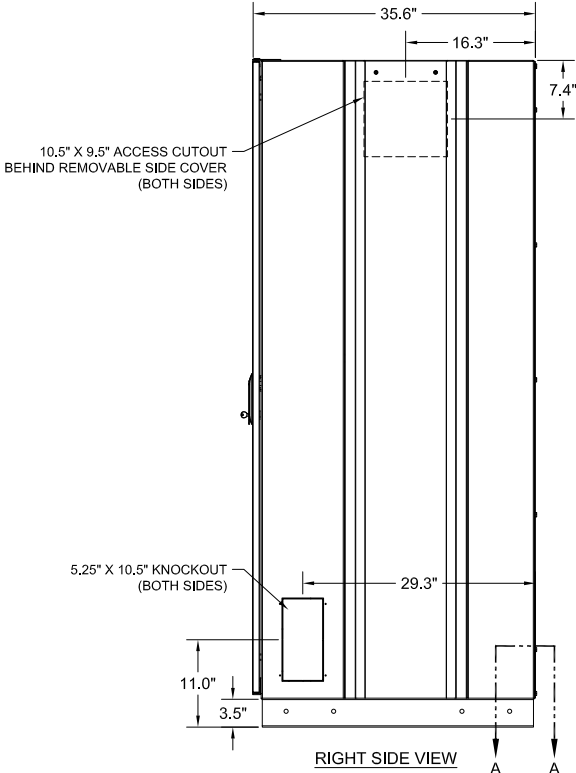
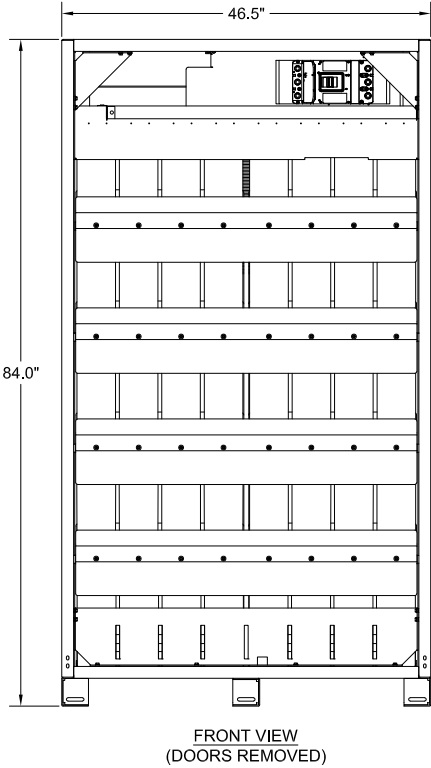


PART NUMBER BREAK DOWN  
UBC80-B60040D0750ZA01

- TABLE CODE: A01 A03 A04  
SEISMIC RATING: BLANK=NONE, H OSHPD, Z SEISMIC  
BATTERY SIZE: 0750 HR7500ET, 1150 12XE1150F-FR, 0705 UPS12-705XXXF  
BATTERY MANUFACTURER: D=DEKA, E=ENERSYS, CLM=C&D PLM, CLP=C&D PLP  
BATTERY QUANTITY  
BREAKER AMPS  
COLOR: B=BLACK

BATTERY TABLE	
MODEL	QUANTITY
UPS12-705PLPF	40
UPS12-705PLMF	40
HR7500ET	40
12XE1150F-FR	40



- NOTES:
- EMPTY CABINET WEIGHT (APPROXIMATE): 1000 LBS.
  - WEIGHT WITH BATTERIES (APPROXIMATE): 6410-7210 LBS.
  - FACTORY ASSEMBLED BATTERY CABINETS ARE UL AND CUL LISTED TO UL 1778 & CSA C22.2 NO. 107.3 (UL FILE NO. E212683).
  - NEMA 1 TYPE ENCLOSURE.
  - HEAVY GAUGE WELDED STEEL CONSTRUCTION.
  - POWDER COAT FINISH ON EXTERIOR AND INTERIOR OF CABINET.
  - FOR EASE OF CONDUIT INSTALLATION A 16 GAUGE CONDUIT KNOCKOUT PLATE IS PROVIDED TO COVER A KNOCKOUT IN THE CABINET. (1) 8"x8" COVER PLATE IS PROVIDED.
  - BATTERIES CAN BE ACCESSED FROM THE FRONT OF THE CABINET.
  - THE CABINET CAN BE MOVED WITH A PALLET JACK OR FORKLIFT USING THE PALLET JACK ACCESS POINT LOCATED AT THE FRONT OR REAR OF THE CABINET. THE CABINET CAN BE MOVED FROM THE SIDES WITH ROL-A-LIFT TYPE EQUIPMENT MOVER. THE CABINET IS ONLY TO BE LIFTED FROM THE BOTTOM.
  - A MINIMUM CLEARANCE OF 36" IS REQUIRED AT THE FRONT OF THE CABINET.
  - A MINIMUM CLEARANCE OF 2" IS REQUIRED AT THE TOP AND THE REAR OF THE CABINET FOR OPTIMAL COOLING.
  - SEISMIC CODE "Z": (OPTIONAL CONFIGURATION) IS CERTIFIED TO THE INTERNATIONAL BUILDING CODE (IBC) AND THE CALIFORNIA BUILDING CODE (CBC) TO MEET SEISMIC DESIGN VATEGORY F, SS=2.0 AND IMPORTANCE FACTOR 1.5.
  - SEISMIC CODE "H": (OPTIONAL CONFIGURATION) IS OSHPD CERTIFIED.

REVISIONS

DWG. No.	91480-M-SD01-1 REV 2	SHEET 1 OF 2	REV: 2
FILE LOCATION:			
REF. DWG. No.			
APPROVED: CH	DATE 04/04/25		
ENGINEER: JRL	DATE 04/03/25		
CHECKED: CH	DATE 04/03/25		
DRAFTER: JRL	DATE 04/03/25		
SCALE: NTS			
DIM. IN: INCHES			

MITSUBISHI ELECTRIC  
POWER PRODUCTS, INC.  
WARRENDALE, PA.

TITLE:  
UBC80 BATTERY CABINET

