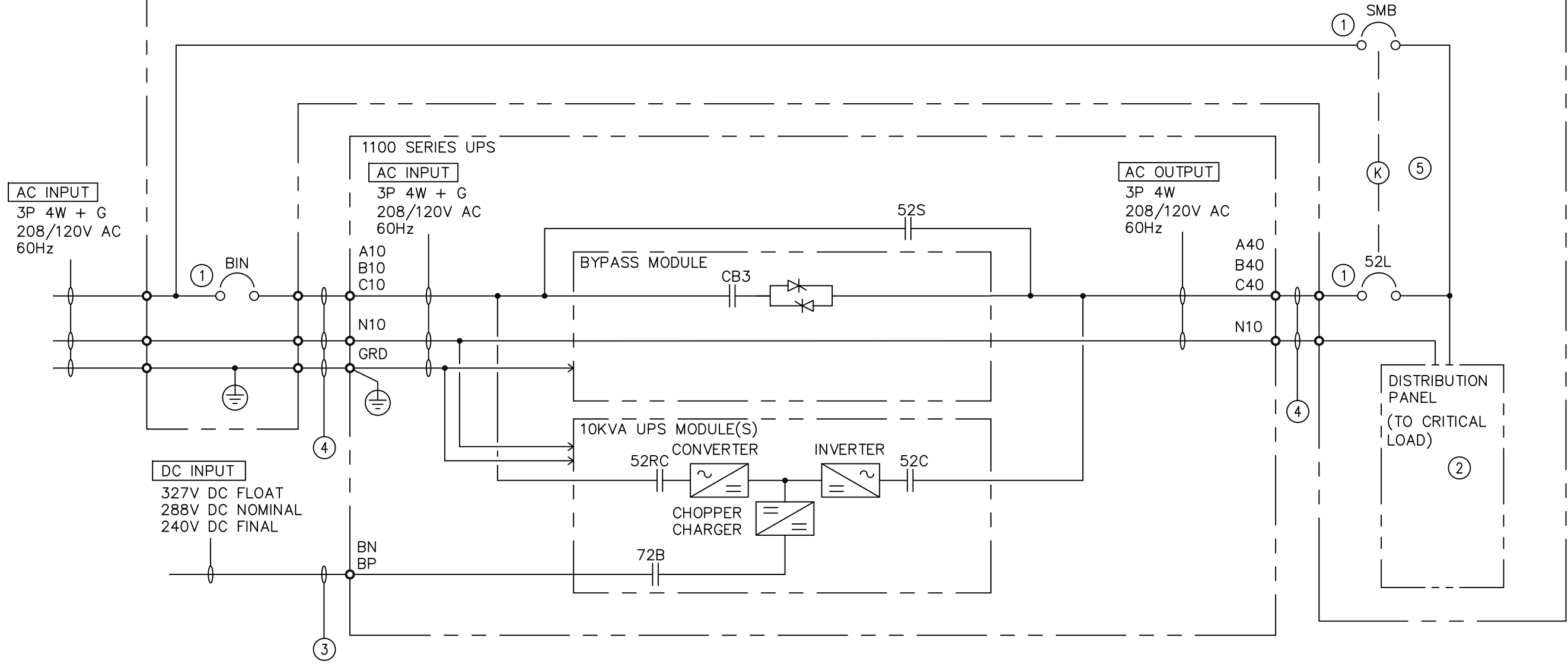


# 1100 SERIES UPS MULTI-PURPOSE CABINET WITH 3 BREAKER MAINTENANCE BYPASS AND DISTRIBUTION PANEL

MULTI-PURPOSE CABINET WITH 3 BREAKER MAINTENANCE BYPASS AND DISTRIBUTION PANEL



**NOTES:**

- ① THIS IS A MODULAR UPS SYSTEM ALLOWING THE UPS KVA RANGE TO BE INCREASED FROM 10KVA TO 50KVA IN 10KVA INCREMENTS. THE END-USER IS RESPONSIBLE FOR SIZING ALL ASSOCIATED APPURTENANCES BASED ON PROJECTED LOAD AND ALL APPLICABLE STATE, LOCAL & FEDERAL CODES.
- ② STANDARD 30 POLE DISTRIBUTION PANEL .
- ③ DC CABLE KITS ARE AVAILABLE THROUGH MEPPi, IF THE BATTERY CABINET IS ADJACENT TO THE UPS.
- ④ AC CABLE KITS ARE AVAILABLE THROUGH MEPPi, IF THE MULTI-PURPOSE CABINET IS ADJACENT TO THE UPS.
- ⑤ OPTIONAL SKRU/SKPM

REVISIONS	DATE	BY	DESCRIPTION
00. INITIAL RELEASE	11/08/2011	G. JOHNSTON	
01. NOTES & DESCRIPTIONS UPDATED	11/30/2011	G. JOHNSTON	
02. GENERAL REVISION	05/30/2012	G. JOHNSTON	

<p>PROPRIETARY THIS DOCUMENT IS PROPERTY OF MITSUBISHI ELECTRIC POWER PRODUCTS INC. AND CONTAINS PROPRIETARY AND CONFIDENTIAL INFORMATION WHICH MUST NOT BE DUPLICATED, USED OR DISCLOSED OTHER THAN AS EXPRESSLY AUTHORIZED BY MITSUBISHI ELECTRIC POWER PRODUCTS, INC.</p>		<p>DRAWN: M. MEINERT DATE: 09/29/11</p> <p>CHECKED: M. BALMER DATE: 09/29/11</p> <p>ENGINEER: M. MEINERT DATE: 09/29/11</p> <p>APPROVED: K. BEAMER DATE: 10/31/11</p>	<p>DATE: 09/29/11</p> <p>DATE: 09/29/11</p> <p>DATE: 10/31/11</p>
<p>REF. DWG. No.</p>		<p>FILE LOCATION:</p>	

<p>MITSUBISHI ELECTRIC POWER PRODUCTS, INC. WARRENDALE, PA.</p>	<p>TITLE: 1100 SERIES UPS MULTI-PURPOSE CABINET SCHEMATIC</p> <p>SHEET 1 OF 1</p>
<p>DWG No. UD-100171</p>	
<p>REV: 2</p>	