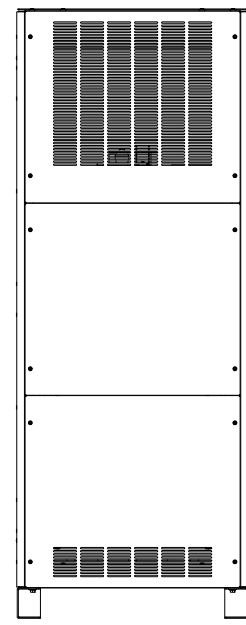
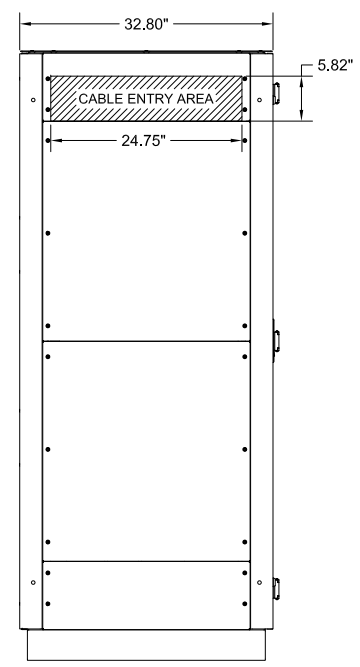


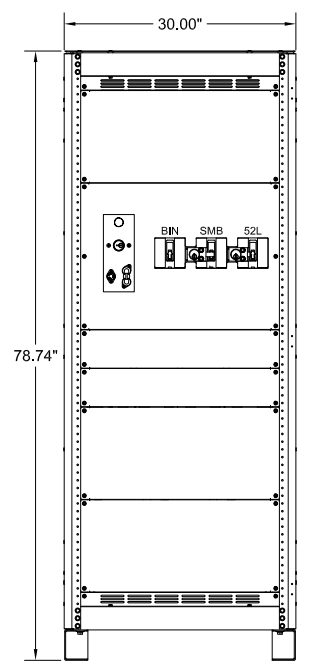
TOP VIEW



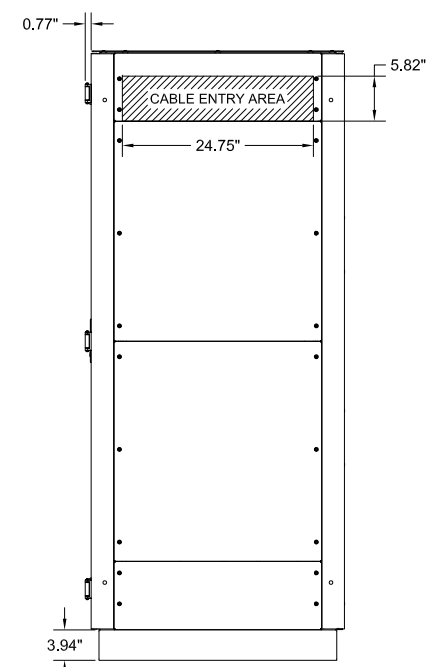
REAR VIEW



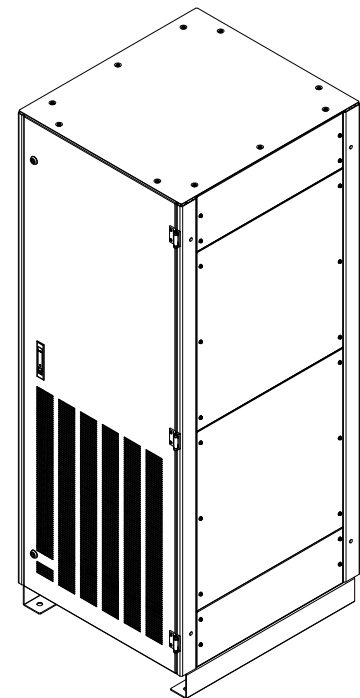
LEFT SIDE VIEW



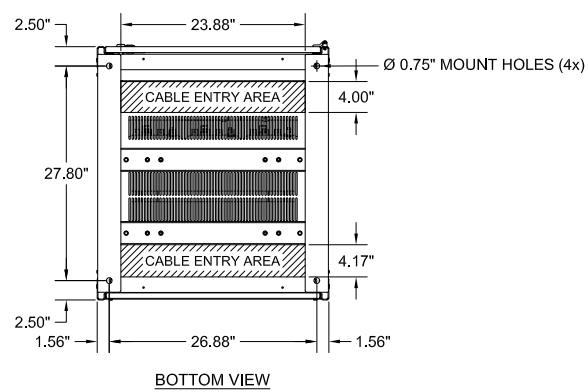
FRONT VIEW (DOOR REMOVED)



RIGHT SIDE VIEW



ISOMETRIC VIEW

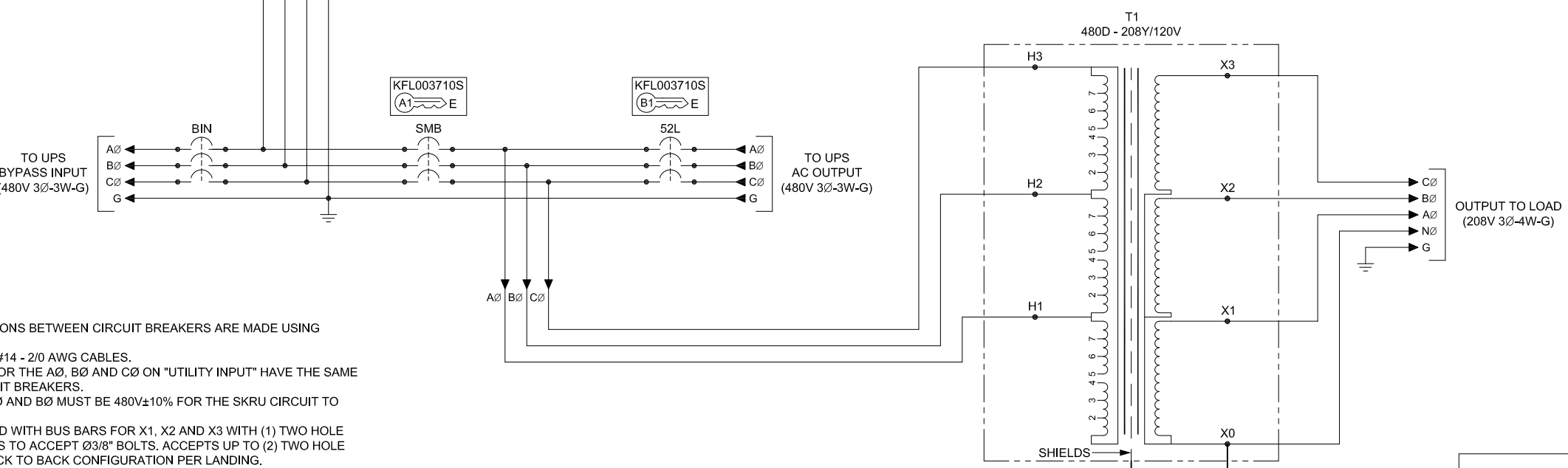
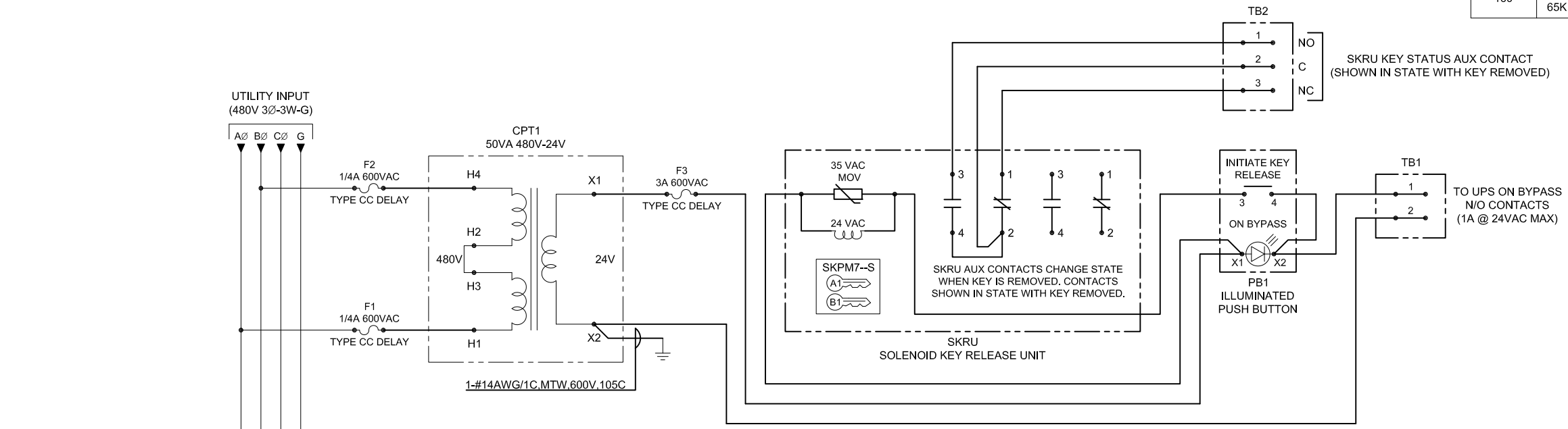


BOTTOM VIEW

- NOTES:
- APPROXIMATE WEIGHTS:
80KVA - 1250 LBS.
100KVA - 1405 LBS.
150KVA - 1735 LBS.
160KVA - 2040 LBS.
 - ASSEMBLY IS UL/CUL LISTED TO UL 891 AND C22.2 NO. 244.
 - NEMA 1 TYPE ENCLOSURE.
 - THE CABINET IS CONSTRUCTED FROM GALVANIZED STEEL.
 - THE CABINET IS TO BE MOUNTED THROUGH THE 0.750" HOLES IN THE CABINET LEGS. THE LEGS ARE FORMED FROM 10 GAUGE STEEL.
 - FINISH IS POWDER COAT ON ALL EXTERNAL AND VISIBLE SURFACES, INTERIOR PANELS AND MOUNT BRACKETS ARE GALVANIZED FINISH.
 - CABINET LEGS ARE REVERSIBLE FOR EASY ACCESS TO CABINET FLOOR MOUNTING HARDWARE.
 - THE EQUIPMENT IS CERTIFIED TO THE INTERNATIONAL BUILDING CODE (IBC) AND THE CALIFORNIA BUILDING CODE (CBC) TO MEET SEISMIC DESIGN CATEGORY F, SS = 2.0 AND IMPORTANCE FACTOR 1.5.
 - A MINIMUM CLEARANCE OF 36" IS REQUIRED AT THE FRONT OF THE CABINET.
 - A MINIMUM REAR CLEARANCE OF 6" IS REQUIRED FOR OPTIMAL COOLING OF THE EQUIPMENT.

| | | | | | | | |
|-----------|---------------|----------------|-----------------|------------|--------------|--------------|---|
| REVISIONS | REF. DWG. No. | FILE LOCATION: | DIM. IN: INCHES | SCALE: NTS | DRAFTER: CH | DATE: 8/2/23 | <p>MITSUBISHI ELECTRIC POWER PRODUCTS, INC. WARRENDALE, PA.</p> <p>TITLE: 90845 SERIES MAINTENANCE BYPASS CABINET WITH TRANSFORMER, 90-160KVA 3 BREAKER BYPASS WITH SKRU, 480D-208Y/120V OUTPUT TRANSFORMER</p> <p>DWG No. SHEET 1 OF 2</p> |
| | | | | | CHECKED: CH | DATE: 8/2/23 | |
| | | | | | ENGINEER: CH | DATE: 8/2/23 | |
| | | | | | APPROVED: CH | DATE: 8/2/23 | |
| | | | | | | | REV: 4 |

| CIRCUIT BREAKER SUMMARY | | | | |
|-------------------------|--------------|---------------|-----------------|-------------|
| UPS KVA | AIC | BREAKER MODEL | TRIP | WIRE RANGE |
| 80 | 14K @ 480VAC | FDB3125 | 125A (80% TMAG) | (1) 4 - 4/0 |
| | 65K @ 480VAC | HFD3125 | | |
| 100 | 14K @ 480VAC | FDB3150 | 150A (80% TMAG) | (1) 4 - 4/0 |
| | 65K @ 480VAC | HFD3150 | | |
| 150 | 35K @ 480VAC | FD3225 | 225A (80% TMAG) | (1) 4 - 4/0 |
| | 65K @ 480VAC | HFD3225 | | |
| 160 | 35K @ 480VAC | JD3250 | 250A (80% TMAG) | (1) 4 - 350 |
| | 65K @ 480VAC | HJD3250 | | |



- NOTES:
1. ALL ELECTRICAL CONNECTIONS BETWEEN CIRCUIT BREAKERS ARE MADE USING COPPER BUS BARS.
 2. GROUND LUG ACCEPTS (4) #14 - 2/0 AWG CABLES.
 3. MECHANICAL LUGS USED FOR THE AØ, BØ AND CØ ON "UTILITY INPUT" HAVE THE SAME WIRE RANGE AS THE CIRCUIT BREAKERS.
 4. VOLTAGE BETWEEN THE AØ AND BØ MUST BE 480V±10% FOR THE SKRU CIRCUIT TO FUNCTION PROPERLY.
 5. TRANSFORMER IS PROVIDED WITH BUS BARS FOR X1, X2 AND X3 WITH (1) TWO HOLE LANDING ON 1-3/4" CENTERS TO ACCEPT Ø3/8" BOLTS. ACCEPTS UP TO (2) TWO HOLE COMPRESSION LUGS IN BACK TO BACK CONFIGURATION PER LANDING.
 6. TRANSFORMER IS PROVIDED WITH A BUS BAR FOR X0 WITH (4) ONE HOLE LANDINGS TO ACCEPT Ø3/8" BOLTS. ACCEPTS UP TO (2) ONE HOLE COMPRESSION LUGS IN BACK TO BACK CONFIGURATION PER LANDING.
 7. TERMINAL BLOCKS ARE UL/CUL RECOGNIZED 600V 20A RATED. WIRE RANGE IS 22-12AWG.
 8. THIS DRAWING IS TO BE USED FOR ELECTRICAL PURPOSES ONLY AND DOES NOT REPRESENT THE ACTUAL MECHANICAL LAYOUT OF THE EQUIPMENT.
 9. REFER TO OPERATION PROCEDURE AE-ENP00033.

- KIRK KEY NOTES:
1. THE "E" OR "W" NEXT TO THE INTERLOCK INDICATES THE POSITION OF THE INTERLOCK BOLT WHEN THE KEY IS REMOVABLE. "E" = EXTENDED AND "W" = WITHDRAWN.
 2. THE KEY OR KEYS NEXT TO THE INTERLOCK INDICATES THE KEY NUMBER THAT FUNCTIONS WITH THE INTERLOCK.

| TRANSFORMER RATINGS | | | | | | | | |
|---------------------|-----------|-----------------|-------------------|-----------|----------|-----------|----------|------------|
| UPS KVA | XFRMR KVA | PRIMARY VOLTAGE | SECONDARY VOLTAGE | FREQUENCY | MATERIAL | TEMP RISE | K FACTOR | EFFICIENCY |
| 80 | 80 | 480 | 208Y/120 | 60 HZ | AL | 150°C | K13 | DOE-2016 |
| 100 | 100 | | | | CU | | | |
| 150 | 160 | | | | | | | |
| 160 | 160 | | | | | | | |

| | | | | | | | |
|-----------|--|------------|--------------|-----------------|---|--|----------------------|
| REVISIONS | DIV. IN: INCHES | SCALE: NTS | DRAFTER: MTS | DATE: 9/30/2025 | <p>MITSUBISHI ELECTRIC POWER PRODUCTS, INC. WARRENDALE, PA.</p> | | |
| | THIS DRAWING CONTAINS PROPRIETARY AND CONFIDENTIAL INFORMATION OF C&C POWER, INC. AND HAS BEEN PREPARED FOR THE USE OF MITSUBISHI ELECTRIC POWER PRODUCTS, INC. FOR USE IN CONJUNCTION WITH EQUIPMENT PROVIDED BY C&C POWER, INC. UNAUTHORIZED REPRODUCTION IN WHOLE OR IN PART, WITHOUT WRITTEN PERMISSION OF C&C POWER, INC. IS PROHIBITED. © 2012 C&C POWER, INC. | | | | | CHECKED: PB | DATE: 10/2/2025 |
| | REF. DWG. No. | | | | | ENGINEER: | DATE: |
| | FILE LOCATION: | | | | | APPROVED: | DATE: |
| | | | | | | TITLE: 90845 SERIES MAINTENANCE BYPASS CABINET WITH TRANSFORMER, 80-160KVA 3 BREAKER BYPASS WITH SKRU, 480D-208Y/120V OUTPUT TRANSFORMER | DWG No. SHEET 2 OF 2 |